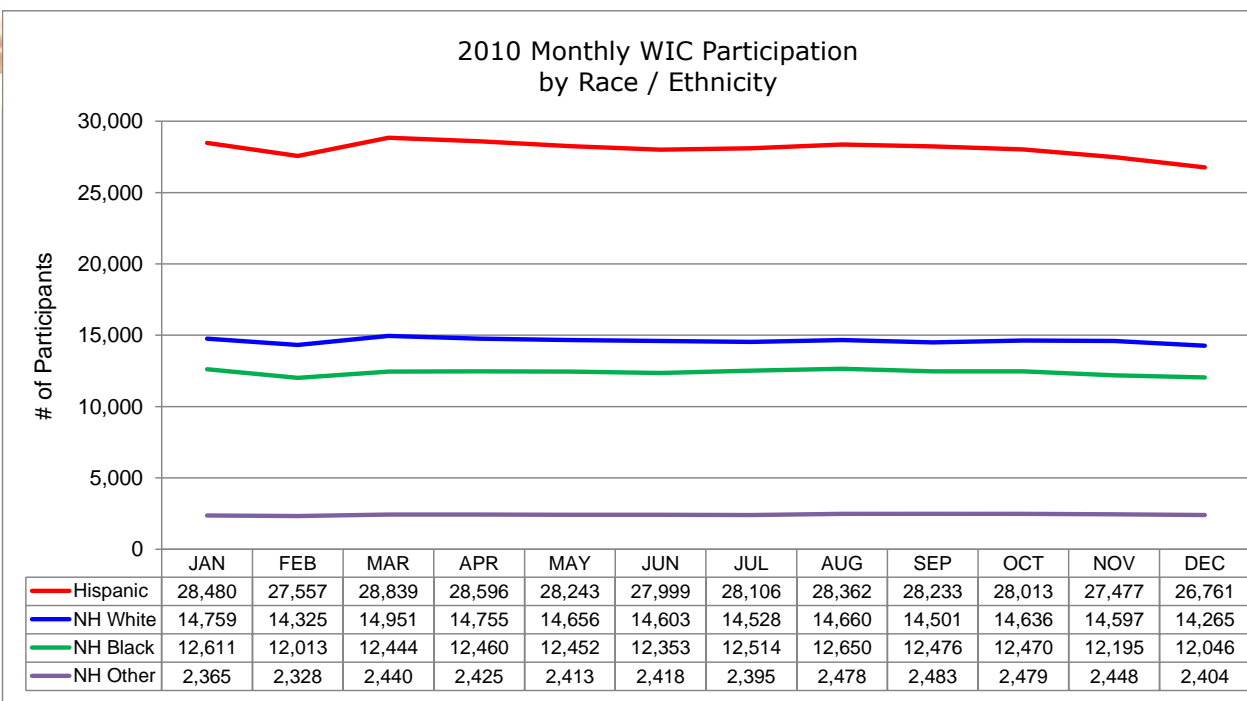


2010 Monthly WIC Participation  
by Race / Ethnicity (Summary Categories) <sup>a, b</sup>

STATEWIDE TOTALS	QUARTER 1			QUARTER 2			QUARTER 3			QUARTER 4			MONTHLY AVERAGE	%
	JAN	FEB	MAR	APR	MAY	JUN	JUL	AUG	SEP	OCT	NOV	DEC		
Hispanic	28,480	27,557	28,839	28,596	28,243	27,999	28,106	28,362	28,233	28,013	27,477	26,761	28,056	48.8%
Non-Hispanic White	14,759	14,325	14,951	14,755	14,656	14,603	14,528	14,660	14,501	14,636	14,597	14,265	14,603	25.4%
Non-Hispanic Black	12,611	12,013	12,444	12,460	12,452	12,353	12,514	12,650	12,476	12,470	12,195	12,046	12,390	21.6%
Non-Hispanic, Other Race	2,365	2,328	2,440	2,425	2,413	2,418	2,395	2,478	2,483	2,479	2,448	2,404	2,423	4.2%
<b>GRAND TOTAL</b>	<b>58,215</b>	<b>56,223</b>	<b>58,674</b>	<b>58,236</b>	<b>57,764</b>	<b>57,373</b>	<b>57,543</b>	<b>58,150</b>	<b>57,693</b>	<b>57,598</b>	<b>56,717</b>	<b>55,476</b>	<b>57,472</b>	<b>100.0%</b>



<sup>a</sup> Data source: Statewide WIC Information System (SWIS), Race / Ethnicity Report - WICP3002 (totals may not tie out due to rounding).

<sup>b</sup> Excludes participants of unknown race and/or ethnicity.