

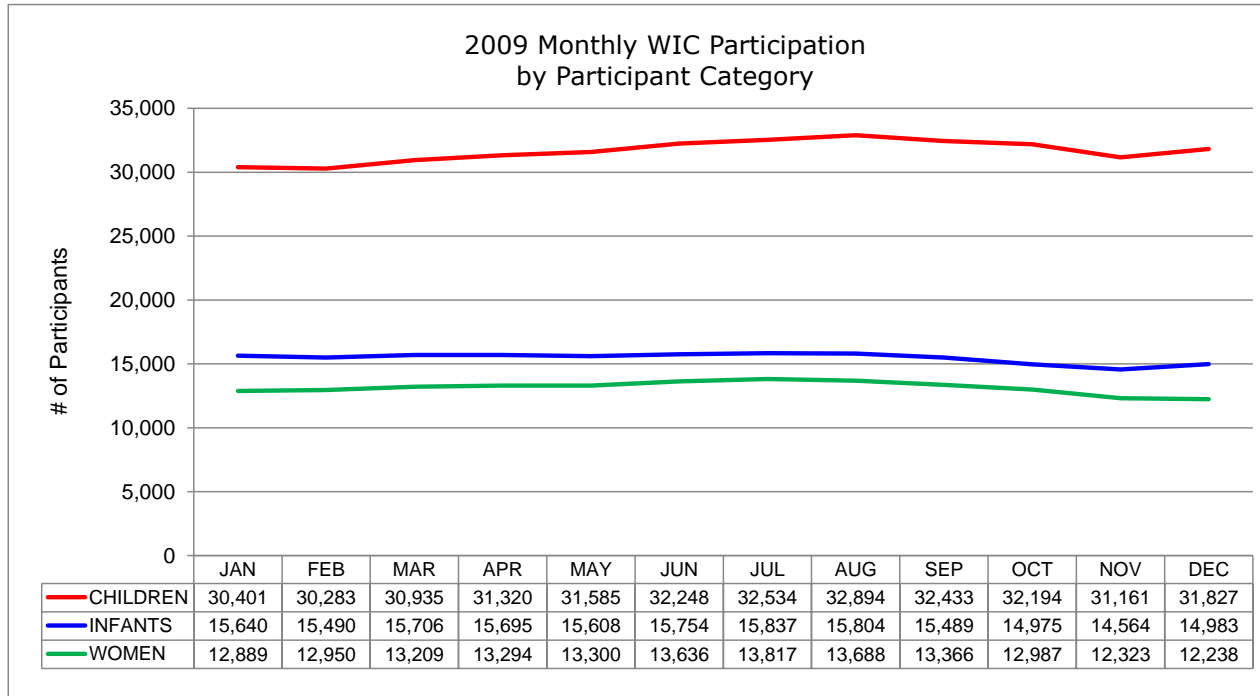
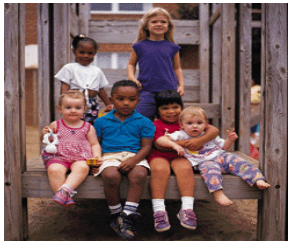


CONNECTICUT DEPARTMENT OF PUBLIC HEALTH  
STATE WIC PROGRAM



2009 Monthly WIC Participation  
by Participant Category <sup>a</sup>

STATEWIDE TOTALS	QUARTER 1			QUARTER 2			QUARTER 3			QUARTER 4			MONTHLY AVERAGE	%
	JAN	FEB	MAR	APR	MAY	JUN	JUL	AUG	SEP	OCT	NOV	DEC		
<b>WOMEN</b>	12,889	12,950	13,209	13,294	13,300	13,636	13,817	13,688	13,366	12,987	12,323	12,238	13,141	21.8%
- Pregnant	6,594	6,860	6,999	7,103	7,094	7,265	7,278	7,177	6,854	6,484	5,985	5,902	6,800	51.7%
- Breastfeeding	2,982	2,935	3,057	3,019	3,019	3,103	3,188	3,223	3,175	3,004	2,817	2,749	3,023	23.0%
- Postpartum	3,313	3,155	3,153	3,172	3,187	3,268	3,351	3,288	3,337	3,499	3,521	3,587	3,319	25.3%
<b>INFANTS</b>	15,640	15,490	15,706	15,695	15,608	15,754	15,837	15,804	15,489	14,975	14,564	14,983	15,462	25.7%
<b>CHILDREN</b>	30,401	30,283	30,935	31,320	31,585	32,248	32,534	32,894	32,433	32,194	31,161	31,827	31,651	52.5%
<b>GRAND TOTALS</b>	58,930	58,723	59,850	60,309	60,493	61,638	62,188	62,386	61,288	60,156	58,048	59,048	60,255	100.0%



<sup>a</sup> Data source: Statewide WIC Information System (SWIS), Participation Report - WICP3001 / 301T.