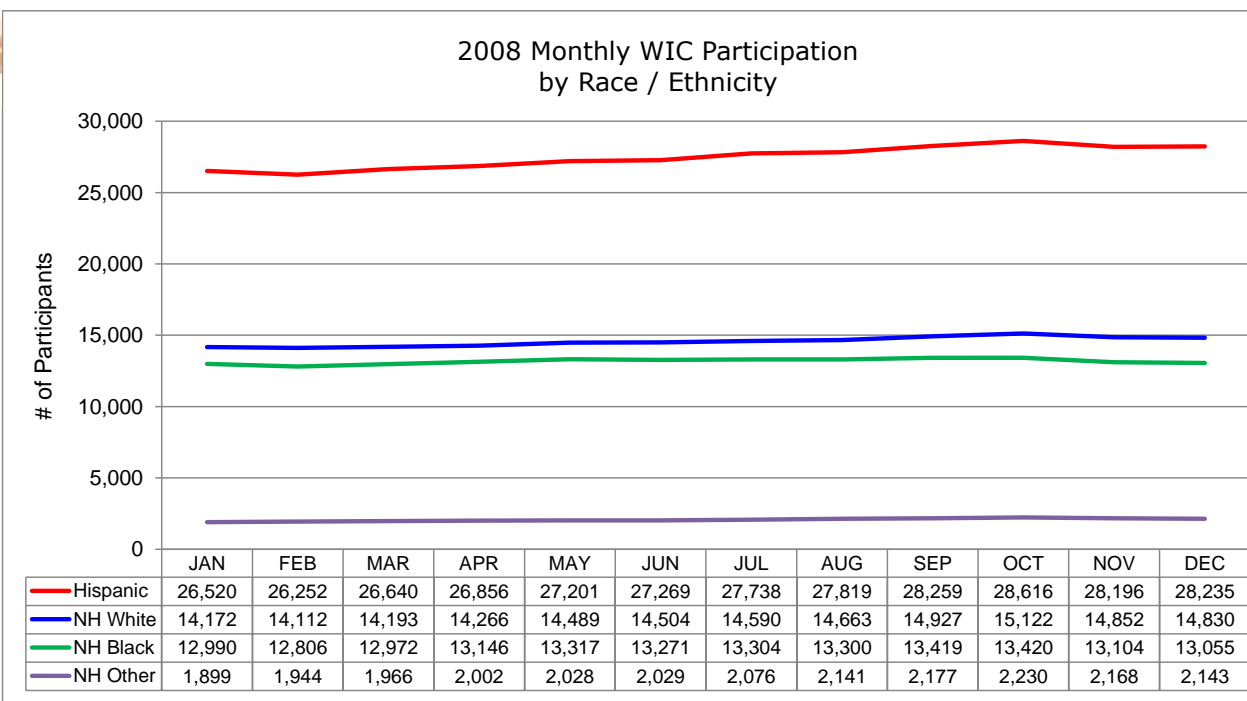


2008 Monthly WIC Participation
by Race / Ethnicity (Summary Categories) ^{a, b}

STATEWIDE TOTALS	QUARTER 1			QUARTER 2			QUARTER 3			QUARTER 4			MONTHLY AVERAGE	%
	JAN	FEB	MAR	APR	MAY	JUN	JUL	AUG	SEP	OCT	NOV	DEC		
Hispanic	26,520	26,252	26,640	26,856	27,201	27,269	27,738	27,819	28,259	28,616	28,196	28,235	27,467	48.0%
Non-Hispanic White	14,172	14,112	14,193	14,266	14,489	14,504	14,590	14,663	14,927	15,122	14,852	14,830	14,560	25.4%
Non-Hispanic Black	12,990	12,806	12,972	13,146	13,317	13,271	13,304	13,300	13,419	13,420	13,104	13,055	13,175	23.0%
Non-Hispanic, Other Race	1,899	1,944	1,966	2,002	2,028	2,029	2,076	2,141	2,177	2,230	2,168	2,143	2,067	3.6%
GRAND TOTAL	55,581	55,114	55,771	56,270	57,035	57,073	57,708	57,923	58,782	59,388	58,320	58,263	57,269	100.0%



^a Data source: Statewide WIC Information System (SWIS), Race / Ethnicity Report - WICP3002 (totals may not tie out due to rounding).

^b Excludes participants of unknown race and/or ethnicity.