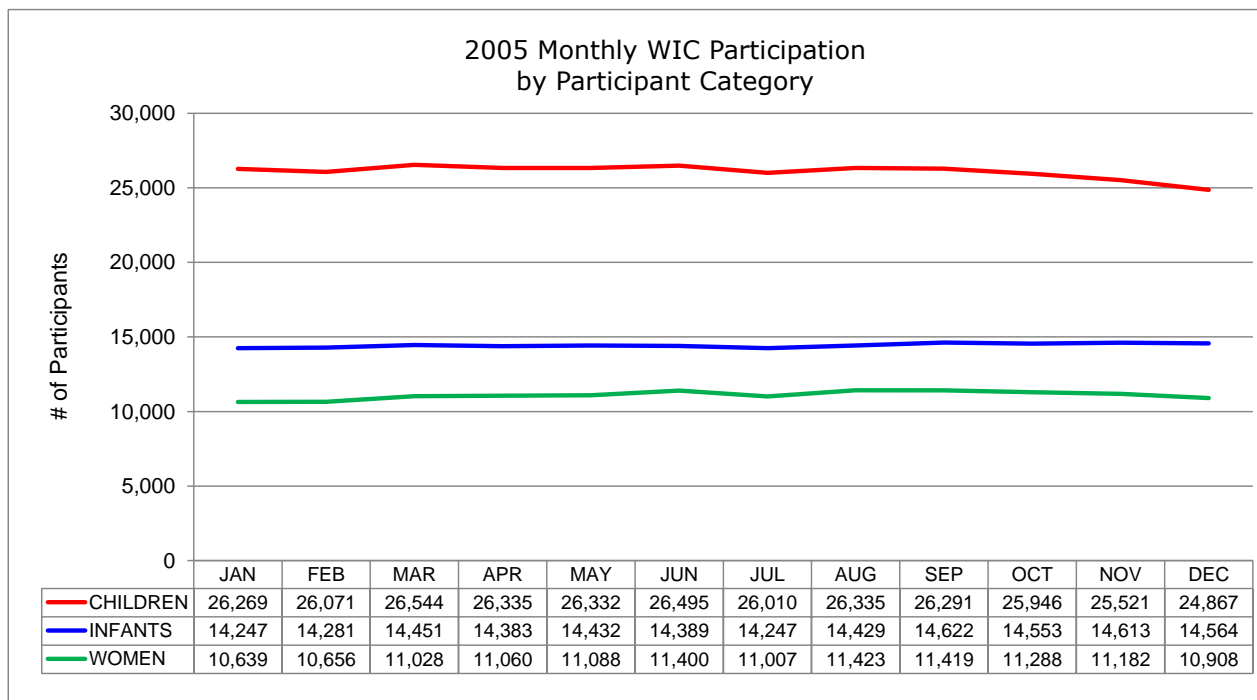
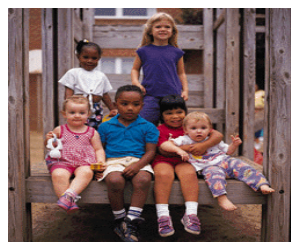


2005 Monthly WIC Participation  
by Participant Category <sup>a</sup>

STATEWIDE TOTALS	QUARTER 1			QUARTER 2			QUARTER 3			QUARTER 4			MONTHLY AVERAGE	%
	JAN	FEB	MAR	APR	MAY	JUN	JUL	AUG	SEP	OCT	NOV	DEC		
<b>WOMEN</b>	10,639	10,656	11,028	11,060	11,088	11,400	11,007	11,423	11,419	11,288	11,182	10,908	11,092	21.5%
- Pregnant	5,567	5,623	5,913	5,965	6,028	6,251	6,000	6,324	6,324	6,161	6,025	5,820	6,000	54.1%
- Breastfeeding	2,089	2,097	2,118	2,158	2,144	2,204	2,139	2,196	2,211	2,246	2,271	2,258	2,178	19.6%
- Postpartum	2,983	2,936	2,997	2,937	2,916	2,945	2,868	2,903	2,884	2,881	2,886	2,830	2,914	26.3%
<b>INFANTS</b>	14,247	14,281	14,451	14,383	14,432	14,389	14,247	14,429	14,622	14,553	14,613	14,564	14,434	28.0%
<b>CHILDREN</b>	26,269	26,071	26,544	26,335	26,332	26,495	26,010	26,335	26,291	25,946	25,521	24,867	26,085	50.5%
<b>GRAND TOTALS</b>	51,155	51,008	52,023	51,778	51,852	52,284	51,264	52,187	52,332	51,787	51,316	50,339	51,610	100.0%



<sup>a</sup> Data source: Statewide WIC Information System (SWIS),  
Participation Report - WICP3001 / 301T.