

AGENDA
CONNECTICUT STATE DENTAL COMMISSION

Thursday, November 19, 2020 at 9:00 AM
Department of Public Health
410 Capitol Avenue, Hartford Connecticut

CALL TO ORDER

- I. **FACT FINDING**
Declaratory Ruling – Sleep Apnea

- II. **OLD BUSINESS**
Dental Licensure Objective Structured Clinical Examination (DLOSCE)

- III. **NEW BUSINESS**
Digital Impressions

ADJOURN

STATE DENTAL COMMISSION via MICROSOFT TEAMS

Join on your computer or mobile app

[Click here to join the meeting](#)

Or call in (audio only)

[+1 860-840-2075](tel:+18608402075) - Phone Conference ID: 163 055 890#

3Shape TRIOS

Go Beyond on your digital journey



3shape 

It all starts with a great scanning experience

Whether you are digital newcomer looking to get started with an easy-to-use entry-level scanner or a fully digital practice ready to embrace tools to take your restorations to the next level, 3Shape TRIOS® innovation enables you to always deliver superior patient care.



34 independent accuracy studies report statistical superiority with TRIOS

International Journal articles confirm significantly high accuracy results in favour of TRIOS compared with conventional and other intraoral scanners.¹



AI scan technology for simplified scanning

Removes unnecessary soft tissues on the scan making scanning easier.



Wireless innovation for enhanced comfort and ease

The world's first wireless scanner option enables you to scan unrestricted by wires, optimizing comfort for both you and your patients, and making scanning easier.



CELLERANT
BEST OF CLASS
TECHNOLOGY AWARD

7 TIME WINNER



TRIOS Patient Specific Motion to perfect your restorations

Record a series of different bite positions and use the dynamic occlusion as a reference when designing the indication.

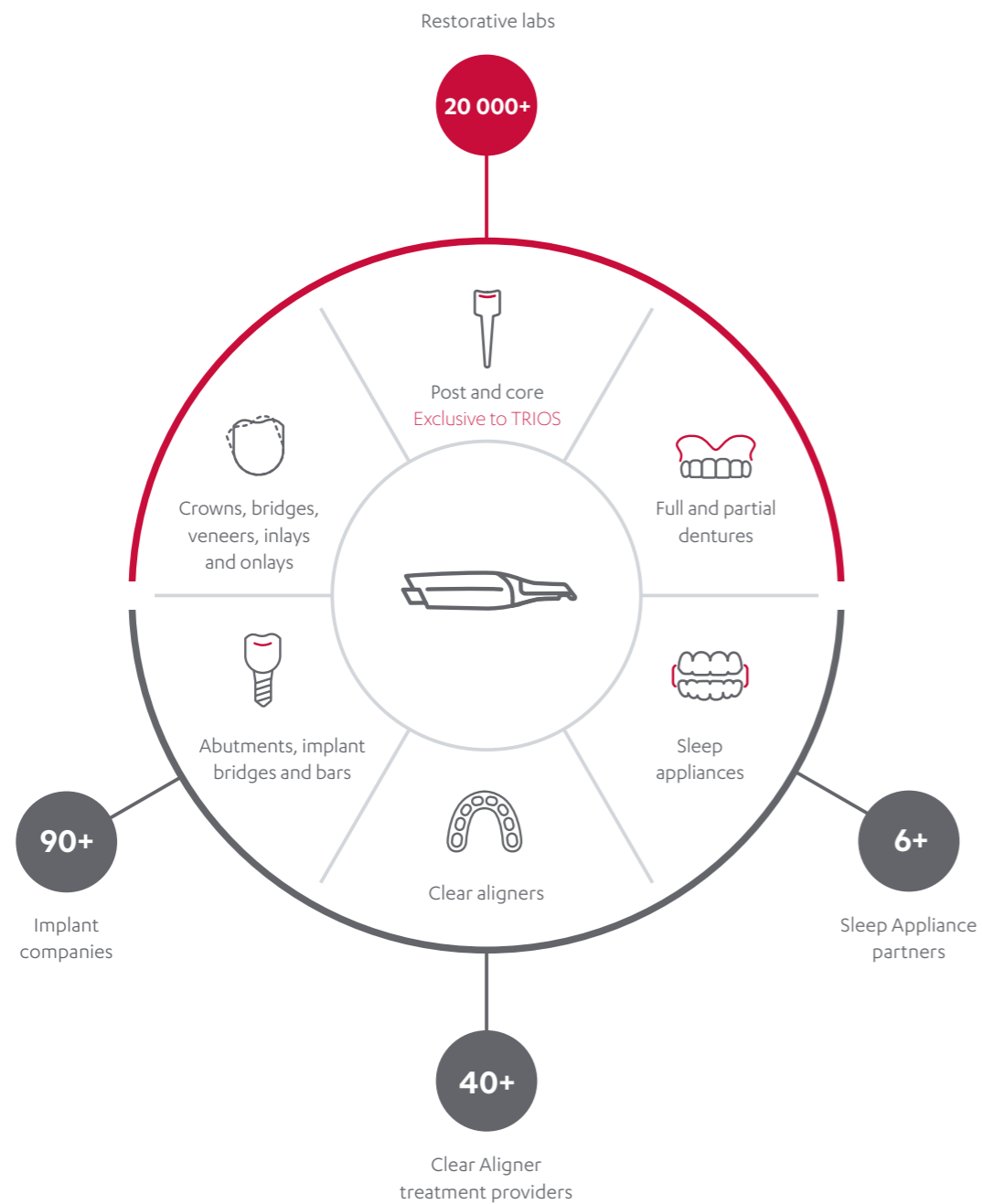


Realistic colors and shade measurement for patient engagement

Create high-quality digital impressions in life like colors and apply shade measurement to evaluate treatment and activate quality dialogue with patients.

Access an unrivalled treatment options

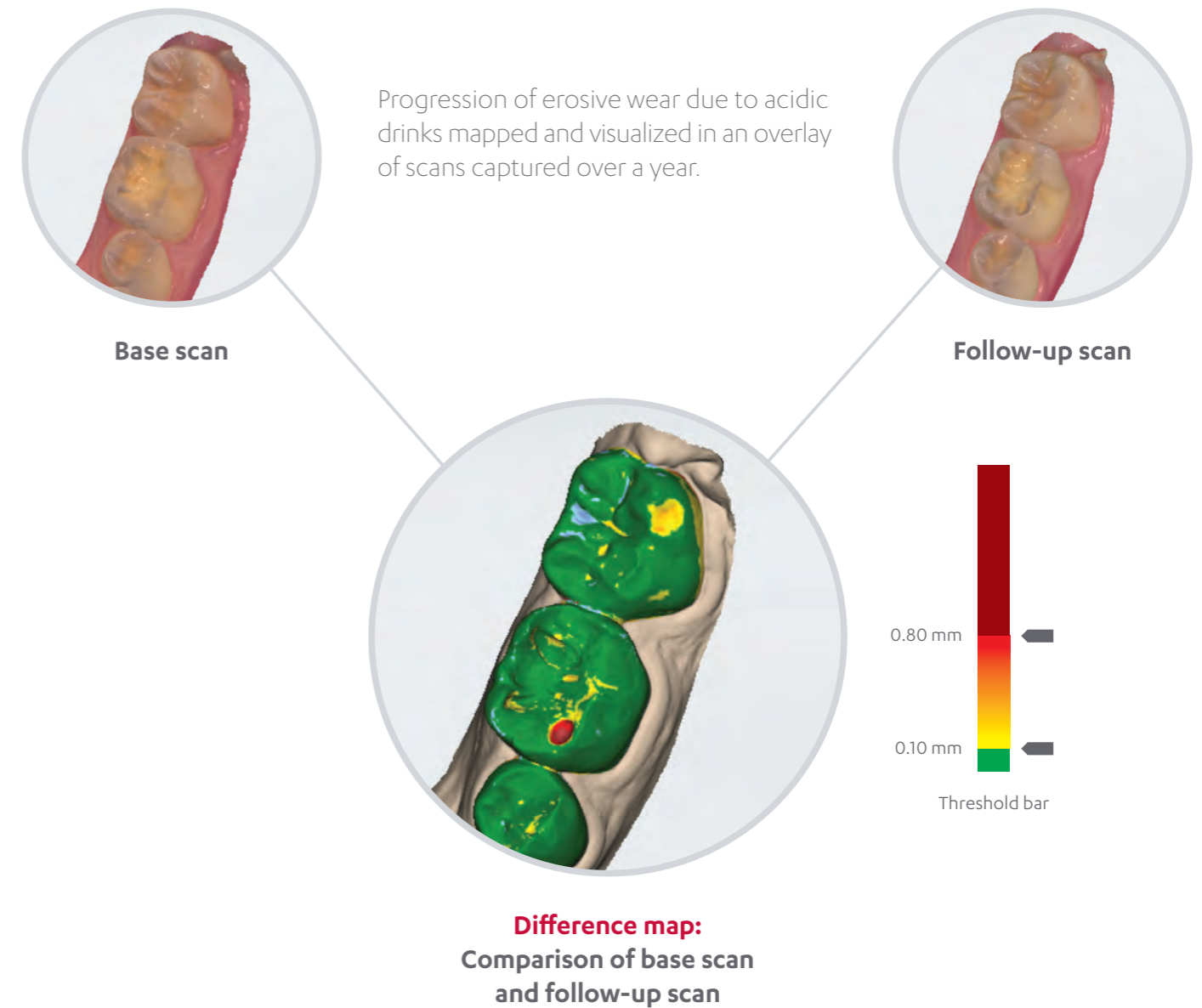
Empower your practice with the comprehensive, ever-expanding and open 3Shape TRIOS® ecosystem. With total integration to your preferred partners for all indications, you can secure the best and most cost-effective options for your business.



Enable preventive care with monitoring and diagnostic tools

3Shape TRIOS® Patient Monitoring for preventive insights

Scan every patient regularly at every visit to accurately track changes in teeth and identify dental conditions sooner. Share visual information with patients using the colors to show the amount of changes.



Excite your patients and advance case acceptance

Bring expected treatment outcomes to life with 3Shape TRIOS® MOVE®+ and TRIOS excitement apps.

TRIOS MOVE+

Gain next-level patient engagement

Excite your patients by displaying their scans and treatment designs, up close on the new large 15.6" monitor.

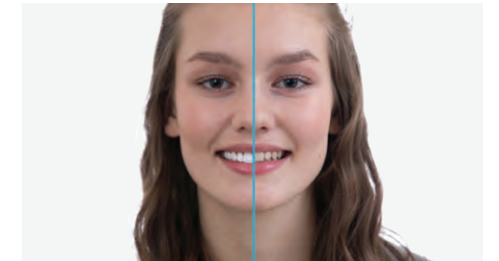
Experience great ergonomics

Enjoy the ease of always being able to position the setup in the right place ensuring optimal comfort for both you and your patient. Plus, new integrated rear USB 2.0 port for easy import/export of data for treatment planning.



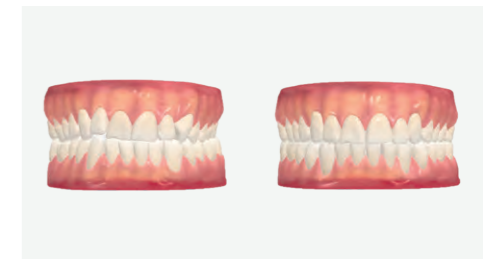
Show patients their future smile with 3Shape Smile Design

Take a photo of your patient's face and design their beautiful new smile in just minutes. Share the photorealistic results with your patient to align expectations and stimulate treatment acceptance.



Grow orthodontic treatments with 3Shape TRIOS® Treatment Simulator

Scan your patient and show their present dentition compared to the proposed outcome of orthodontic treatment to gain greater case approval.

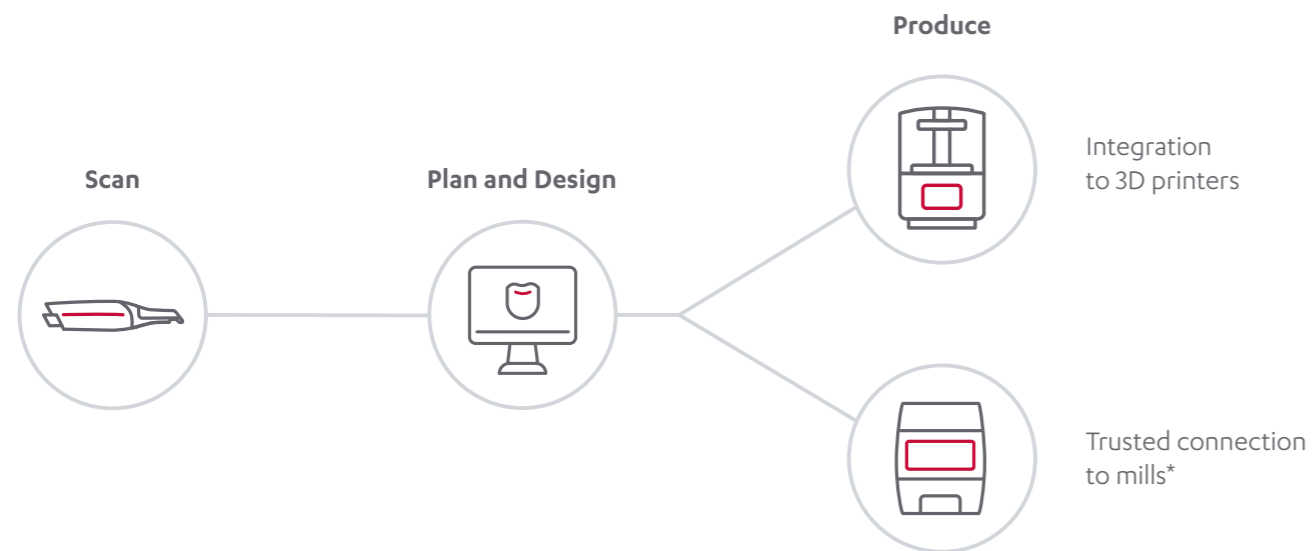


"To be able to see what my smile could be, was very emotional. Now I'm at the point where it looks exactly like it did in TRIOS Smile Design. I can't believe it!"

Samantha Morra, Patient
New York, USA

Grow your business by producing in-house with 3Shape TRIOS Studio apps

3Shape's open system includes 3Shape TRIOS® Studio apps with seamless integration, trusted connections to leading third-party mills and compatibility with all 3D printers. This enables you to do more, gain profitable in-house production options and exceed patient expectations.



"Offering less invasive surgery and same-day dentistry allows me to provide great patient treatment experience and gain greater control."

Dr. Simon Kold
Herning, Denmark

Reference
* In TRIOS Design Studio, we have also enabled Trusted Connections to the best-in-class milling machines, making it even easier to get your components milled.



3Shape TRIOS Design Studio®

Design and produce a broad range of restorations, including standard and screw-retained crowns*, inlays, onlays, veneers and three-unit bridges.



3Shape Implant Studio®

Plan implant positions, and design and manufacture custom surgical guides and temporary screw-retained crowns* in one workflow.



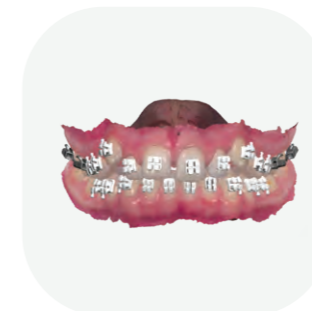
3Shape Splint Studio

Design and produce splints, night guards and mouth guards with a guided, fast and intuitive workflow.



3Shape Clear Aligner Studio®

Access a complete solution that enables you to design and produce clear aligners in your clinic, with a high return on investment potential.



3Shape Indirect Bonding Studio

Plan bracket placement, and design and produce transfer media for indirect bonding.

A fit for every practice

Configure and equip your 3Shape TRIOS® according to your needs and budget.

1. Choose your scanner



TRIOS 4



TRIOS 3



TRIOS 3 Basic
Available in wired version only

2. Choose your connection



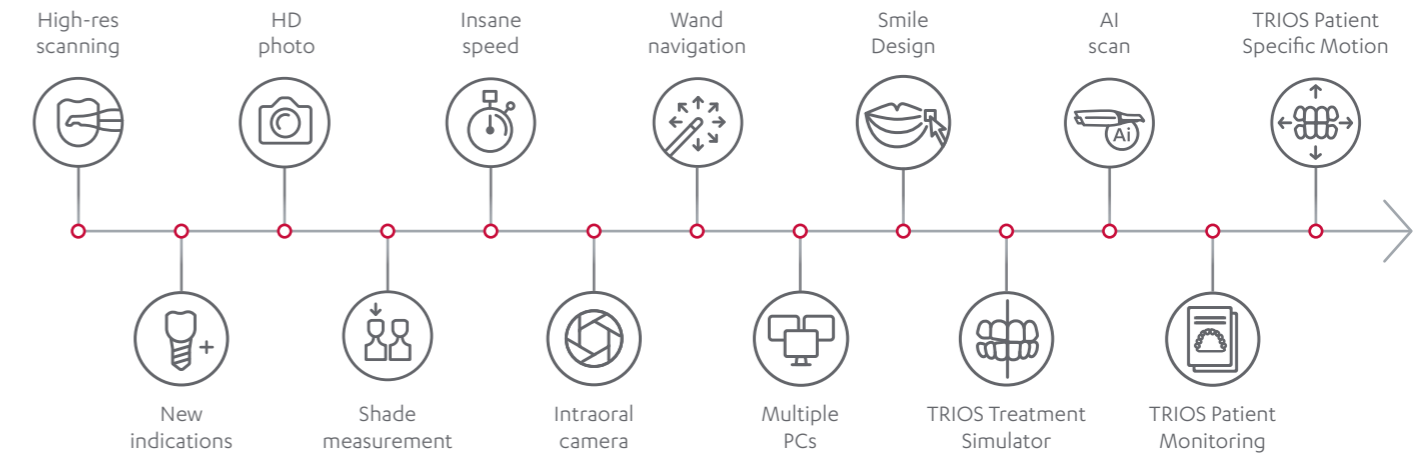
3. Choose your setup



	TRIOS 4	TRIOS 3	TRIOS 3 Basic
Wireless	✓	✓	N/A
AI scan	✓	✓	✓
3Shape accuracy	✓	✓	✓
Real colors and shade measurement	✓	✓	✓
Output format	DCM and STL	DCM and STL	DCM and STL
Smart tips	✓	N/A	N/A
TRIOS Patient Monitoring	✓	✓	Upgrade to TRIOS 3
TRIOS Treatment Simulator	✓	✓	Upgrade to TRIOS 3
3Shape Smile Design	✓	✓	Upgrade to TRIOS 3
TRIOS Patient Specific Motion	✓	✓	Upgrade to TRIOS 3
Studio apps	Add-on option	Add-on option	Add-on option

Future-proof your 3Shape TRIOS with 3Shape CliniCare

Get upgrades, online support, training and more in one simple package that ensures you are always equipped for peak clinical performance.



Share and learn with the 3Shape Community

Connect and network with your 3Shape digital peers around the world, access training materials, showcase your best work and learn how to get the most out of your 3Shape TRIOS® solution.

Get started today at community.3shape.com.



References
 (1) 34 in vivo and in vitro studies (between 2015 and 2018). Data on file. <https://www.3shape.com/en/case-studies>. For additional information contact: ClinicalAffairs@3shape.com
 * Abutment Design for screw-retained crowns not cleared by the FDA for clinical use in the US.

About 3Shape

3Shape is changing dentistry together with dental professionals across the world by developing innovations that provide superior dental care for patients. Our portfolio of 3D scanners and CAD/CAM software solutions for the dental industry includes the multiple award-winning 3Shape TRIOS® intraoral scanner, the 3Shape X1® CBCT scanner, as well as market-leading scanning and design

software solutions for both dental practices and labs. Two graduate students founded 3Shape in Denmark's capital in the year 2000. Today, 3Shape employees serve customers in over 100 countries from 3Shape offices around the world. 3Shape's products and innovations continue to challenge traditional methods, enabling dental professionals to treat more patients more effectively.

Contact your reseller regarding availability of 3Shape products in your region.

82602758 3Shape TRIOS 2020 Broch US

© 3Shape A/S, 2020. All rights reserved.
The 3Shape name and logo and/or other trademarks mentioned herein are trademarks of 3Shape A/S, registered in US and other countries.

3shape 

Planmeca Emerald™ S

Hyper-speed scanning with superior usability

True colour
scanning

ENGLISH

PLANMECA

Why go digital?

Improve usability and comfort with intraoral scans

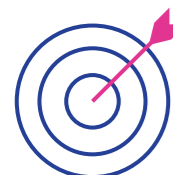
It makes plain sense to enter the world of intraoral scanning – digital impressions are more convenient for your team to capture and more comfortable for your patients. They offer numerous advantages over traditional impressions.



Faster, easier, and more comfortable



Single appointment treatments due to saved time



Superior digital accuracy



New treatment possibilities



Digital transfer and storage



Cost savings on materials and shipping



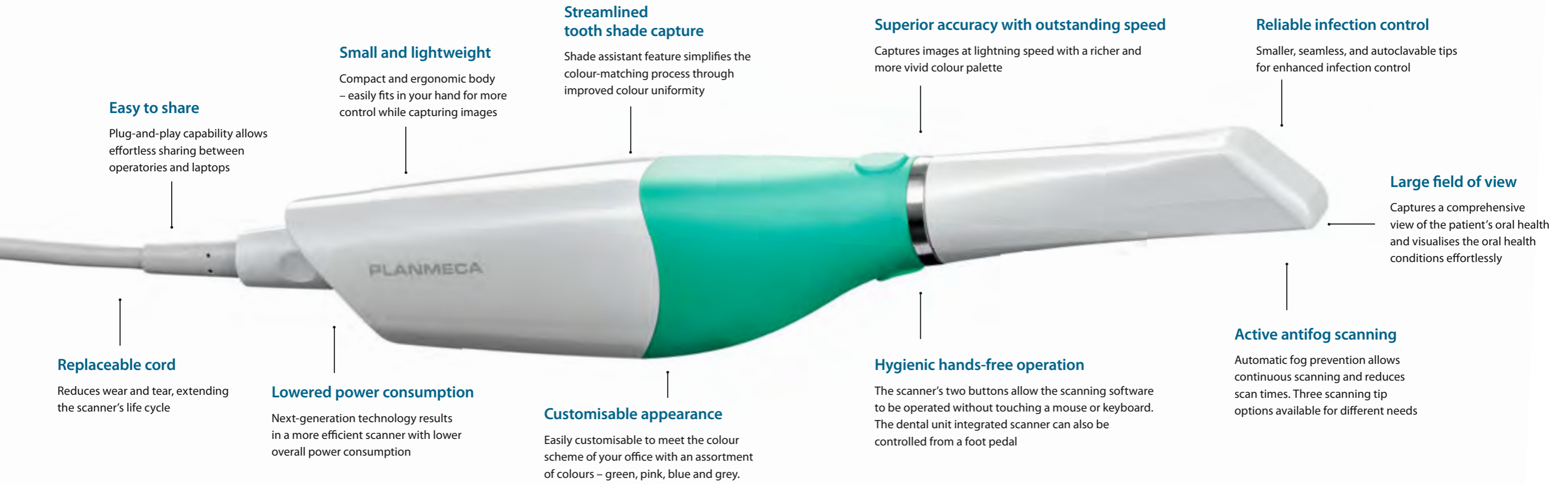
Go digital and get inspired!

Planmeca Emerald™ S



Exceedingly fast next-gen intraoral scanner

Planmeca Emerald™ S is a brand new premium version of the beloved Planmeca Emerald™ intraoral scanner. The new scanner combines all the proven features of the original Planmeca Emerald with spectacular improvements in usability and speed. Capturing digital impressions has never been as easy!



Easy to share

Plug-and-play capability allows effortless sharing between operatories and laptops

Small and lightweight

Compact and ergonomic body – easily fits in your hand for more control while capturing images

Streamlined tooth shade capture

Shade assistant feature simplifies the colour-matching process through improved colour uniformity

Superior accuracy with outstanding speed

Captures images at lightning speed with a richer and more vivid colour palette

Reliable infection control

Smaller, seamless, and autoclavable tips for enhanced infection control

Large field of view

Captures a comprehensive view of the patient's oral health and visualises the oral health conditions effortlessly

Replaceable cord

Reduces wear and tear, extending the scanner's life cycle

Lowered power consumption

Next-generation technology results in a more efficient scanner with lower overall power consumption

Customisable appearance

Easily customisable to meet the colour scheme of your office with an assortment of colours – green, pink, blue and grey.

Hygienic hands-free operation

The scanner's two buttons allow the scanning software to be operated without touching a mouse or keyboard. The dental unit integrated scanner can also be controlled from a foot pedal

Active antifog scanning

Automatic fog prevention allows continuous scanning and reduces scan times. Three scanning tip options available for different needs

Specifications

Lifetime licence	✓
Smart two-button function	✓
True colour scanning	✓
Scans intraorally, impressions and models	✓
Heated mirror guarantees non-fogging operation	✓
Autoclavable tips	✓
Powder-free scanning	✓

Data output	Open STL and PLY
Scanning technology	Projected pattern triangulation
Light source	Red, green, and blue lasers
Dimensions	Scanner with tip: 41 x 45 x 249 mm
Weight	Scanner with tip: 229 g
Connecting cable	USB 3.0/USB-C

Minimum and recommended PC system requirements

Processor	Intel i7, 7th generation (7700 series) or better
RAM	32 GB
Graphics card	NVIDIA GeForce GTX 1070 4 GB or better
Monitor	Full HD resolution
Cable interface	USB 3.0
Operating system	Windows 10 (64 bit) Pro

Different tips for different needs

Always the right tool in your hands

With two different scanning tip sizes, the **Planmeca Emerald™ S** scanner meets all your diagnostic needs. The intraoral scanner also allows using transillumination technology for caries detection: just change the tip and you have two outstanding devices in one!

Standard tip

Standard scanning tip is the perfect tool for performing general intraoral scanning extremely fast and conveniently.



SlimLine tip

SlimLine tip is thinner and smaller than the standard tip, and an ideal choice for scanning patients with smaller mouths. It makes reaching posterior teeth and capturing interproximal areas even easier.



See the teeth in a whole new light!



Coming soon!

Cariosity tip

Cariosity scanning tip is an excellent tool for caries diagnostics: it helps clinicians to detect approximal, occlusal and secondary caries as well as cracks in their early stages.

With the Cariosity tip, you can see through the tooth. You can turn the light on from one side at a time or simultaneously from both sides to get the best possible view for diagnostics.

The unbeatable combination of examining HD colour and caries detection views side by side makes diagnostic procedures even easier. The views can also be saved and documented effortlessly.

Caries detection is done with a radiation-free near-infrared light, which is safe for the patient.

All diagnostic tools are available at once through seamless integration with X-ray images in **Planmeca Romexis®** software.

- ✓ Autoclavable tips for impeccable infection control
- ✓ Heated tip for active fog prevention
- ✓ Change the tip anytime and continue scanning

Just change the tip and you are ready to go!



Vast range of indications

Expand your clinical capabilities

Planmeca Emerald™ S is a flexible intraoral scanner that supports various different workflows. With a wide range of treatment options, the scanner offers benefits across several specialities.

Full Arch Scanning

Scan a full dental arch in under a minute. Send scans to the lab of your choice or use them in your own digital workflows. Document your patients' teeth for future use and comparisons.



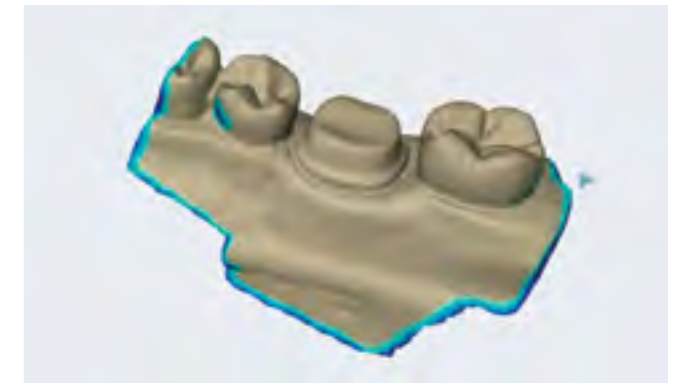
2D Snapshot

Use the scanner as an intraoral camera and capture 2D snapshots with natural colours. Engage patients, document existing conditions or consult with colleagues.



Cariology

Detect caries and cracks in their early stages with the Cariosity tip.



Prosthodontics

Get instant feedback: check your preparations from the computer screen. Scan preparations and abutments to create crowns, inlays and onlays, veneers and bridges. Scan temporary restorations and wax-ups to create final designs. Scan full arches to create dental splints, removable prostheses and other prosthetic indications.



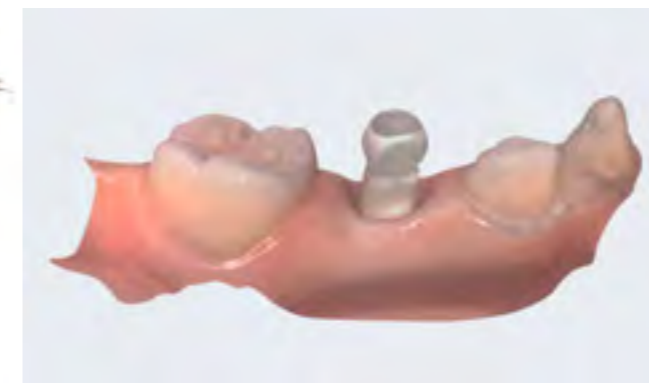
Orthodontics

Scan full arches for digital orthodontic treatment planning. Combine intraoral scan data with a CBCT image to see the root movements. Follow treatment progress and results.



Maxillofacial surgery

Combine intraoral scans with CBCT data for treatment planning and manufacturing prostheses.



Implantology

Scan implant positions with the help of scan bodies for abutment design. Scan abutments to create crowns and bridges on top of them. Combine scan data with a CBCT image for digital implant planning and surgical guide design.

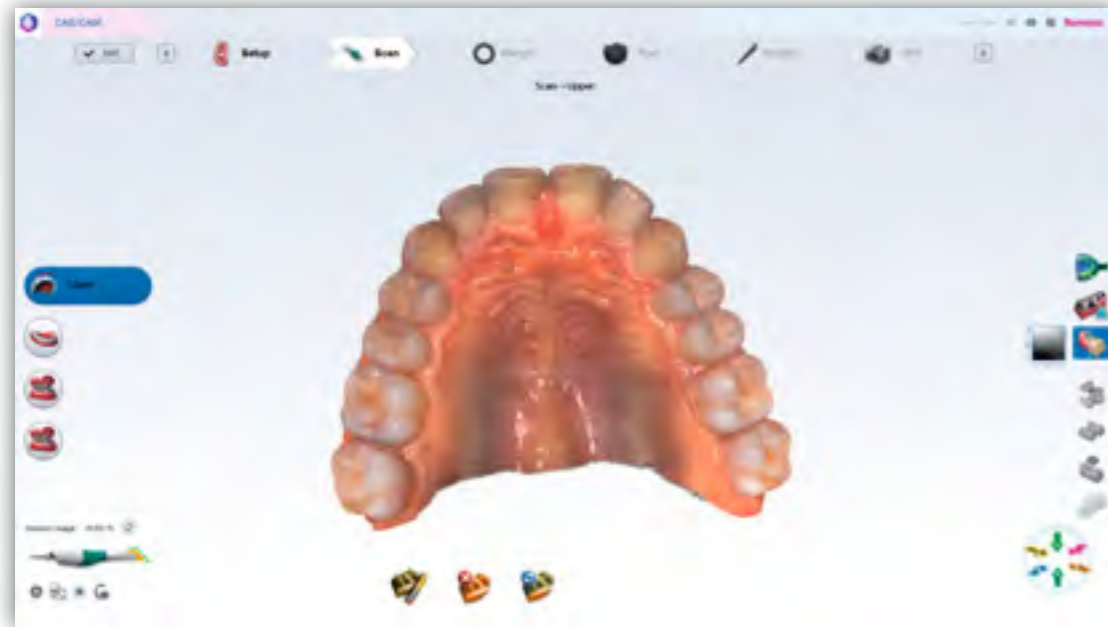
Take advantage of the scanner's compatibility with various orthodontic systems: See the constantly growing list of all the orthodontic solution providers at www.planmeca.com/orthocompliance.



Smart scanning software

Easy and efficient scanning with Planmeca Emerald™ S

The intuitive **Planmeca Romexis®** scanning software guarantees a smooth scanning experience at all times. With open export and import options, regular updates, and constant new features, the software is always at the cutting edge of intraoral scanning.



Intuitive usability

The scanning software of **Planmeca Emerald™ S** is effortless and intuitive to use – offering flexibility to match your preferred workflows.



Open software

The scanning software is truly open and allows you to export digital impressions to third parties. You can easily send your scans to dental laboratories using our cloud service.



High quality scans

Planmeca Emerald S and **Planmeca Romexis®** provide guaranteed accuracy – with clear margin lines and beautiful colours due to advanced scanning technology and HighRes pictures that can be superimposed onto scans.



All-in-one software

There is no need for time-consuming data imports and exports – our Planmeca Romexis all-in-one software allows intraoral scans to be combined with CBCT images for e.g. implant planning and designing guides.

Smart scanning modules for different needs

Intraoral scanning can be carried out in two separate software modules – depending on the user's needs.

Planmeca PlanCAD® Easy

The **Planmeca PlanCAD® Easy** module offers a smooth and efficient workflow for intraoral scanning and chairside CAD/CAM. The simple workflow for manufacturing high-quality prosthetic restorations consists of scanning with **Planmeca Emerald™ S**, designing with Planmeca PlanCAD Easy and milling with the **Planmeca PlanMill® 40 S** or **Planmeca PlanMill® 30 S** milling unit.



Planmeca Romexis® Model Analyser

The **Romexis® Model Analyser** module provides a great variety of tools you can use directly after the scanning. With the module, you can easily send the scans to dental laboratories, analyse and measure the scans, compare the scans and follow up treatment results, and create bases for 3D printable models.





Planmeca
Romexis
 all-in-one software

Planmeca Oy designs and manufactures a full line of industry-leading dental equipment, including 3D and 2D imaging devices, CAD/CAM solutions, dental care units and software. Planmeca Oy, the parent company of the Finnish Planmeca Group, is strongly committed to better care through innovation, and it is the largest privately held company in the field.

Follow us on social media!



PLANMECA

Asentajankatu 6 | 00880 Helsinki | Finland | tel. +358 20 7795 500 | fax +358 20 7795 555 | sales@planmeca.com | www.planmeca.com

Images may contain optional items not included in standard delivery. Available configurations and features may have country or area specific variations. Some products displayed above may not be available in all countries or areas. Rights for changes reserved.

Planmeca, All in one, Anamat Plus, Cobra, Comfy, DentoVac, Digital perfection, Economat Plus, Elegant, Flexy, Mini-dent, Perio Fresh, PlanEasyMill, Planmeca 4D, Planmeca ActiveAqua, Planmeca AINO, Planmeca ARA, Planmeca CAD/CAM, Planmeca CALM, Planmeca Chair, Planmeca Clarify, Planmeca Compact, Planmeca Creo, Planmeca Emerald, Planmeca FIT, Planmeca Intra, Planmeca iRomexis, Planmeca Lumion, Planmeca Lumo, Planmeca Maximity, Planmeca Minea, Planmeca Minendo, Planmeca Minetto, Planmeca mRomexis, Planmeca Noma, Planmeca Olo, Planmeca Online, Planmeca PlanCAD, Planmeca PlanCAM, Planmeca PlanClear, Planmeca PlanDesk, Planmeca PlanID, Planmeca PlanMill, Planmeca Planosil, Planmeca PlanPure, Planmeca PlanScan, Planmeca PlanView, Planmeca ProCeph, Planmeca ProFace, Planmeca ProLD, Planmeca ProMax, Planmeca ProModel, Planmeca ProOne, Planmeca ProScanner, Planmeca ProSensor, Planmeca ProX, Planmeca Romexis, Planmeca Serenus, Planmeca SingLED, Planmeca SmartGUI, Planmeca Solanna, Planmeca Sovereign, Planmeca Ultra Low Dose, Planmeca Vision, Planmeca Viso, Planmeca Verity, Planmeca Waterline Cleaning System, Planmeca Xtremity, Proline Dental Stool, ProTouch, Saddle Stool, SmartPan, SmartTouch, Trendy, and Ultra Relax are registered or non-registered trademarks of Planmeca in various countries.

 HENRY SCHEIN®
DENTAL

Smarter Easier Faster

introducing
Primescan™
available through
Henry Schein Dental



Primescan

 Dentsply
Sirona



what if
you had a seamless,
complete chairside
workflow within 90 days?

WE MAKE THAT HAPPEN.

Primescan is the latest advancement in digital impressioning (DI) and computer-aided design/computer-aided (CAD/CAM) manufacturing. It's taking the standard of dentistry — and workflows — to an entirely new level. Now, you can process faster and capture with more accuracy from wider angles and distances. But that's just the tip of the iceberg.

Henry Schein's comprehensive implementation and support services allow you to transition seamlessly into a DI or CAD/CAM workflow. Within 90 days, we'll set you up — and continuously support you — for the future of dentistry.

Primescan provides
5x more data per scan.*

*Dentsply Sirona, February 4, 2019
Data is in comparison to Omnicam AC

Primescan available through Henry Schein

The accuracy, speed and usability of Primescan is stunning. This new technology is pushing digital dentistry and preparing practices for the future.

Primescan's Smart Pixel Sensor **processes more than 1 million 3D points per second.***

Smarter

Primescan is the most advanced intraoral scanner on the market.* The innovative Smart Pixel Sensor processes more than 1 million 3D points per second, producing photorealistic and highly accurate data on the very first scan. Its depth scan technology enables perfect sharpness and precision — even at a measuring depth up to 20 mm.*

Faster

Your entire workflow will transform with Primescan. So will your bottom line. One of the most impressive advancements is its ability to capture the most data in the least amount of time. Intelligent processing also ensures optimum interaction with the software by transmitting exactly the data the software needs to proceed. That means your 3D scans will be displayed immediately. Validated, open data transfer options allow you to instantly send your high-resolution 3D scans to labs and other partners.

Easier

With Primescan, everything you need is in one cart. It is designed with you and your patient in mind. The scanner has a wide field of view that can access deep angles. It also offers greater patient comfort, user ergonomics and patient record integration. Three different sleeves help you fulfill your practice needs as well as all general hygiene requirements. Choose from stainless steel sleeves with either sapphire glass or as an autoclavable option. Single-use disposable sleeves are also available.

*Mehl et al, Accuracy studies at University of Zurich, Int J Comput Dent. (publishing date: March 2019)

Acquisition Unit

Primescan's workstation is designed for modern dentistry. The highly intuitive and ergonomic platform makes everything easier, smarter and faster. The acquisition unit includes:

- A touchpad
- A 16:9 wide-format movable touchscreen
- Kinematic design
- Smart Hygiene
- A fully mobile unit
- Long battery life for hours of operation



Software Options

We offer two software configurations to allow you to choose what best fits the needs and workflow of your practice.

Primescan AC with Connect Software

- Supports data transfer options for your preferred partners
- Secure and encrypted data transfer through Connect Case Center Inbox
- Easy upgradability to full chairside workflow
- Touch-enabled and intuitive user interface

CEREC® Primescan AC with CEREC Software

- Supports full chairside workflows for single-visit dentistry
- Flexible data export options
- Automated workflow
- Touch-enabled and intuitive user interface

Primescan delivers
**perfect sharpness at
up to 20 mm depth.**

Primescan consolidates
**more than 50,000
images per second.***

The Henry Schein Partnership

Updating your dental practice impacts your time, finances and workflow. As your partner, we support you in every aspect to ensure you have long-term success.

Whether you choose Primescan DI or Primescan CEREC, we provide:

Flexible, extended financing.

Henry Schein Financial Services offer payment programs that support your needs.

Digital advisors.

Our specialists in workflow, digital technology and IT are skilled in the needs of dental practices and will help build a digital solution that is right for you.

Education, integration and support.

We provide ongoing training and education to maximize your investment. Our patient education and marketing services can also help enhance a high-quality patient experience.

Henry Schein **has**
1000+ manufacturer-trained
technicians.*

*Henry Schein, 2017



The Henry Schein Partnership



Primescan CEREC owners also receive:

A 1-year subscription to CERECDoctors.com.

We provide 12 months of online access to the richest set of CEREC resources and broadest community of CEREC users.

In-office orientation training.

Your CAD/CAM Integration Specialist (CCIS) covers the entire CEREC digital workflow — from operating the camera to placing the restoration. After five days of clinical training, you receive Ortho Certification.

A 90-day CEREC coaching program.

One-on-one coaching sessions can be in person, over the phone or via TeamViewer. The program helps speed up your transition to a complete digital workflow.

\$750 voucher.

Use your voucher towards advanced Level 3 or 4 CEREC Doctors Training on implants or restorations.

Henry Schein's Digital Integration

For both Primescan DI and CAD/CAM users, we make sure your digital integration is seamless. Our team:

Establishes a foundation of Information Technology.

We perform a remote evaluation of your practice's hardware, computers, Wi-Fi, and network security and speed. If there are any concerns or needs for your DI or CAD/CAM integration, we create detailed steps to ensure your practice is ready for a digital upgrade.

Builds scalable solutions.

We create a DI or CAD/CAM solution based on your top criteria. For example, cost of ownership, quality hardware, ease of use and leading software. The solution scales as your practice grows so you can incorporate mills, scanners and operatories without having to rework your entire workflow.

Communicates consistency throughout implementation.

We proactively work to minimize disruptions to your practice during implementation of your new DI or CAD/CAM system. On your installation date, your representative will have additional technical and equipment specialists on-call to ensure a quick and seamless implementation.

10-Step CEREC Installation and Support Process

1

Inspection and testing

Your certified CEREC technician performs a site inspection and in-center product testing.

2

Introductions

We work with you to establish your installation date. You also get to know your local CAD/CAM Integration Specialist (CCIS).

3

Planning

Your CCIS works with you to map out a training plan that matches your scheduling needs.

4

Preparation

Maximize your in-office training by completing the 12 introductory videos on CERECDoctors.com.

5

Orientation

Your CCIS leads an in-practice orientation training for you and your staff.

6

Coaching

You start a 90-day, CCIS-led coaching program that focuses on continued workflow success.

7

Hands-on training

You get to experience a 2-day clinical training led by a CEREC Dentist Mentor at a Henry Schein training facility.

8

Advanced training

CEREC Doctors facilities in Scottsdale, AZ and Charlotte, NC provide a 2-day advanced training course.

9

CEREC Doctor's Voucher

You can use your \$750 CEREC Doctor's voucher at an advanced training on implants or restorations.

10

Results and continued support

Watch as your investment and more efficient workflow provide a greater return. And we'll be right here, if you need anything.

Henry Schein's service has a **92% satisfaction rating.***

*Henry Schein, 2017



To truly understand
the power and precision
of Primescan, you
need to experience
it for yourself.

**SCHEDULE A DEMO AT [HENRYSCHEINDIGITAL.COM/PRIMESCAN](https://henryscheindigital.com/primescan).
OR CALL: 855-262-9586.**

