

State of Connecticut  
Connecticut Department of Public Health

# Connecticut School-based Asthma Surveillance Report 2021

*School Calendar Year: 2020-2021*

---



# **Connecticut School-based Asthma Surveillance Report 2021**

## *School Calendar Year: 2020-2021*

**Commissioner Manisha Juthani, MD  
Connecticut Department of Public Health**

Publication Date: December 2021

Prepared by:

Rory Angulo MD, MBA  
Epidemiologist  
Community, Family Health and Prevention Section  
Connecticut Department of Public Health

For additional information about Connecticut School-based Asthma Surveillance Report 2021 contact:

Connecticut Department of Public Health  
Asthma Program  
410 Capitol Avenue  
PO Box 340308, MS# 11HLS  
Hartford, CT 06134-0308  
Phone: (860) 509-8251  
<http://www.ct.gov/dph/asthma>

Suggested citation: Angulo, R., Peng, J., & Bournaki, M. (2021). Connecticut School-based Asthma Surveillance Report 2021, School Calendar Year: 2020-2021. Connecticut Department of Public Health, Community Health and Prevention Section, Hartford, CT.

Funding partially provided by the Centers for Disease Control and Prevention, Grant Number: 6 NUE1EH001374-03-01

# Acknowledgments

---

## ***Connecticut Department of Public Health Executive Leadership***

Manisha Juthani, MD  
*Commissioner*

Heather Aaron, MPH, LNHA  
*Deputy Commissioner*

Rosa M. Biaggi, MPH, MPA  
*Section Chief – Community, Family Health and Prevention Section*

Mark Keenan, RN, MBA  
*Section Chief – Community, Family Health and Prevention Section*

Amy Mirizzi, MPH, CPH  
*Public Health Services Manager – Chronic Disease Director*

---

## ***Connecticut Department of Public Health***

### ***Asthma Program Staff***

Marie-Christine Bournaki, RN, PhD  
*Health Program Supervisor*

Jennifer R. Squires  
*Health Program Assistant 2*

### ***Epidemiology Unit Staff***

Justin Peng, MPH  
*Epidemiologist 4*

Rory Angulo MD, MBA  
*Epidemiologist 3*

---

Special thank you to the following people for their contributions to making this report possible:

### **Connecticut School Nurses**

John D. Frassinelli, Division Director  
Peter A. Yazbak, Director of Communications  
Stephanie Knutson, Ed D, MSN, RN  
*Connecticut State Department of Education*

Surjit Sethuraman, IT Supervisor  
Srinivasa Chalikonda, IT Analyst 3  
Tigin Jose, IT Analyst 2  
*Connecticut Department of Public Health  
Information Technology*

## Table of Contents

I.	Key Findings.....	1
II.	Introduction.....	2
III.	Results .....	5
A.	Data Completeness .....	5
B.	Asthma Prevalence by Demographics.....	7
C.	Asthma Prevalence by District Reference Groups.....	9
D.	Asthma Severity.....	12
E.	Asthma Action Plan.....	14
F.	Asthma Documentation and Health History .....	16
G.	School District Profile on Asthma.....	17

### Tables

Table 1.	Records submitted by grade level, by HAR-required grades. Public schools, Connecticut 2020. ....	5
Table 2.	Response rates: facility type, by reporting status. CT, 2020. ....	6
Table 3.	Asthma Prevalence by Demographics, Connecticut Public Schools, 2020. ....	7
Table 4.	Asthma Prevalence: Demographics by School Level, Connecticut Public Schools, 2020 ....	8
Table 5.	Asthma Prevalence: Demographics by District Reference Groups (DRG). Connecticut Public Schools, 2020. ....	10
Table 6.	Asthma Severity Classification by Demographic Characteristics, Connecticut Public and Private Schools, 2020. ....	12
Table 7.	Percentage of Students with Asthma with an Asthma Action Plan (AAP) by Demographic Characteristics, Connecticut Public and Private Schools, 2020. ....	14
Table 8.	Percentage of Students with Various Asthma Documentation and Health History, Connecticut Public and Private Schools, 2020. ....	16
Table 9.	School District Profile. Connecticut 2012-2014 .....	18

### Figure

Figure 1.	Asthma prevalence by District Reference Group. Connecticut 2020. ....	9
-----------	---	---

### Appendix

Appendix 1.	Listing of School Reporting. Connecticut, 2012-2014 .....	36
-------------	---	----

## I. Key Findings

- The 2020 overall asthma prevalence among students in the CT public school system is 12.9%, a decrease of 1.4 percentage points compared to the 2012-2014 overall asthma prevalence. Approximately, one of every eight students (12.9%) in the Connecticut public school system is affected with asthma.
- Asthma affects high school and middle school students, at about the same prevalence, 13.8% and 13.3%, respectively. Students in elementary school have a lower asthma prevalence at 11.7%, which is below the overall asthma prevalence among students.
- Male students (14.7%) are affected the most, and statistical significantly above the overall asthma prevalence, with a higher asthma prevalence when compared to female students (12.3%).
- Non-Hispanic black students (18.5%) and Hispanic students (15.7%) are the groups with the highest prevalence of asthma when compared to other non-Hispanic students (12.1%) and non-Hispanic white students (10.7%).
- The Connecticut State Department of Education's (SDE) District Reference Groups (DRG) groups public school districts with similar socioeconomic status and needs together. DRG classifies school districts with a letter, from A to I. With each decrease in DRG classification, the higher the asthma prevalence. Asthma prevalence ranged from 7.4% for DRG A, to 17.7% for DRG I. Five of the ten largest cities (Bridgeport, Hartford, New Britain, New Haven and Waterbury) in Connecticut, along with New London and Windham are classified under DRG I.
- The combined moderate or severe persistent asthma is the most severe form of asthma. Overall, 4.8% of students are affected with the moderate or severe persistent form of asthma. Students at the elementary school (5.2%) are affected the most with this form of asthma severity, followed by students at the middle school (4.8%) and high school (4.4%). Non-Hispanic black students (6.1%) have the highest percentage with moderate or severe persistent form of asthma, followed by Hispanic students (5.7%), other non-Hispanic students (4.6%), and non-Hispanic white students (4.0%). Students whose school districts are classified as DRG I (6.0%) are the most affected compared to any other DRG class.
- Overall, 16.4% of students with asthma have an Asthma Action Plan (AAP). Students from private schools, compared to public schools, show a higher percentage of AAPs in place, 32.3% versus 15.5%, respectively. A higher proportion of non-Hispanic black students (19.7%) have an AAP, followed by non-Hispanic white students (17.2%), Hispanic students (15.3%) and other non-Hispanic students (15.2%). A higher proportion of students affected with moderate or severe persistent asthma have an AAP (31.9%), compared to those with mild persistent (22.8% have an AAP) or intermittent (17.3% have an AAP) forms of asthma.

## II. Introduction

Connecticut General Statute (CGS) [Sec. 10-206](#) requires that each local or regional board of education request a health assessment from each student prior to public school enrollment, in either grade six or seven, and in either grade nine or ten. The health assessment includes a physical examination, some laboratory tests and screening results, and documentation of chronic disease assessment, including asthma. The form is filled out by both a clinician and the student's parent/legal guardian, in their corresponding sections, to document diagnosis of asthma and other screening questions of public health concern.

Since 2004, the Connecticut Department of Public Health (DPH) Asthma Program has managed the statewide School-based Asthma Surveillance System (SBASS), which includes collecting, analyzing, and publishing a report based on the asthma section of the School Health Assessment Record<sup>1</sup> (HAR). The current publication summarizes the information collected during school calendar year 2020-2021.

### **School-based Asthma Surveillance System**

CGS §10-206 requires that local or regional board of education report to the DPH, on a tri-annual basis, the total number of enrolled students per school and per school district with a diagnosis of asthma at the time of public school enrollment, in grade six or seven, and in grade nine or ten. Due to the Coronavirus Disease 2019 (COVID-19) pandemic, the SBASS data collection was postponed for school calendar year 2019-2020, and the data collection was conducted during school calendar year 2020-2021. During 2019 and 2020, the DPH deployed the SBASS online reporting system, a web-based application within the architecture of the DPH Submissions System. The Connecticut Asthma Program staff conducted a total of 9 training sessions, with 526 registrants to prepare school nurse supervisors and school nurses to report, submit, and approve records for their school asthma submission.

For purposes of asthma reporting, a student is considered to have asthma if any of the following conditions are met: the student 1) has a provider's diagnosis of asthma indicated on the HAR, 2) has a provider Asthma Action Plan (AAP) on file, 3) has a provider medication order for asthma medication on file, 4) has self-carry medication approval, 5) has asthma medication in school, 6) has a parental note on file indicating the child has asthma, 7) shows symptoms of asthma, or 8) any other indications that the child is suffering from asthma.

For the school calendar year 2020-2021, SBASS was conducted exclusively online by school nurses/supervisors or other assignees. The SBASS electronic reporting form collects the same information as the paper reporting form used in prior data collection periods.

---

<sup>1</sup> Connecticut State Department of Education. (2018). Health Assessment Record. Retrieved from [https://portal.ct.gov/-/media/SDE/School-Nursing/Forms/HAR3\\_2018.pdf](https://portal.ct.gov/-/media/SDE/School-Nursing/Forms/HAR3_2018.pdf). Accessed on December 2, 2021.

School and district information as well as enrollment data were collected from the State Department of Education (SDE). The SBASS asthma (electronic) form collects the following information on students with asthma: school name, grade, race, ethnicity, documentation of asthma diagnosis based on criteria listed above, asthma severity, and health history. The asthma form is accessible to any SBASS account user who has been vetted by a DPH staff or registered by a school district nurse supervisor. There are two types of account for SBASS users: 1) supervisor accounts with permission to manage users in their corresponding district, add/delete asthma records, update school reporting status, and approve school data submission; and 2) nurse accounts that can only add/delete asthma records and update school reporting status. The SBASS online reporting system was open from September 1, 2020 to September 30, 2021.

### **Asthma Prevalence – Rate Calculation Method**

Following the statutorily mandated asthma reporting requirement, the SBASS collects asthma data on students in the grades the HAR is required for as a condition of school enrollment or at the time of student enrollment in a new district at any grade. Therefore, asthma reporting is not collected systematically from all grades at the elementary, middle, and high school level; however, the SBASS system is designed to accept reports from all grades.

Asthma prevalence was calculated by dividing the number of total students reported as affected with asthma by the number of total students enrolled at the corresponding grade level.

The SBASS reporting system can receive information for all schools, public, private or other, and for all grades, prekindergarten (PK) through grade 12. For the 2020-2021 school calendar year data collection, schools have submitted reports for HAR-required grades; however, as mentioned above, some schools have also submitted reports on non-HAR required grades (e.g., second, third, eighth grade, etc.), which made up for about 30% of all records submitted. The reporting of these non-HAR required grade records could be due to school reporting of new student enrollments outside of HAR-required grades or schools voluntarily choosing to report more than just the HAR required grades.

Some schools reported only new students upon entry and attending for the first time in the public school system. For example, a newly enrolled student (with asthma) who starts attending a public school in first grade, and the school's HAR-required grade is supposed to be PK or kindergarten (K). The 'new' asthma student in first grade is reported by the school, but none of the other first grade students with asthma are reported by the school. Under this scenario the student from first grade should not be used for asthma rate calculation. Other circumstance worth noting are that school districts include different grades by school level. For example, the Cheshire School District's elementary school level includes grades K-6, middle school includes grades 7-8, and high school includes grades 9-12; compared to Hartford School District's elementary school grades PK-5, middle school grades 6-8, and high school grades 9-12. Canterbury Public Schools offer PK-4 grades for elementary school, 5-8 for middle school, and no high school grades under their school district; rather the district covers their resident's high school tuition and transportation when attending other designated high schools. These variations across school districts may affect rates

when they are analyzed overall by school education level. To address grade arrangement variations among school districts, or discrepancies in required HAR-grades in the presence of other grades, this report defaulted its analysis to group the following grades to represent their respective education levels: PK-fifth grade for elementary school level, sixth through eighth grade for middle school level, and ninth through twelfth grade for high school level. The enrollment data, as provided by the SDE, included all grade levels and were arranged to match the school education level.

The methodology to calculate asthma prevalence included using the grade with the highest number of students with asthma reported, as the representative grade for what occurs across all grades in the same education level. This representative grade, the numerator, was compared against the total number of students enrolled for the corresponding grade, the denominator. This methodology was considered the best approach to: prevent data exclusion of schools reporting non-HAR-grades; capture the same likelihood for all grades to be included in the construction of rate calculation; increase the likelihood of selecting a representative value of asthma cases within an education level; and lastly, achieve standardization of education level when grouping and including all grade levels. Overall, 26,172 students with asthma records were reported, of these 97.7% (n=25,561) were matched to the corresponding enrollment information, based on SDE unique identification for a given school. Records not matched with corresponding enrollment information were excluded from asthma rate calculation.



### III. Results

This report is based on data submitted by schools for the school calendar year Fall 2020 – Spring 2021. One-hundred ninety-two school districts submitted asthma reports. Generally, the Connecticut school system arranges students to attend schools located in their town, and all schools within a town form a school district. On some instances when the town population is small, several towns would combine resources and form a regional school district, and the students from those towns would attend school in the regional district. The Connecticut school system also has other school districts (e.g., charter schools or regional education service centers) that were formed for accountability, performance, or financial benefit reasons; and these school districts co-exist with the town or regional school districts and may have overlapping geographic coverage. This report considered the different variations of school groups as school districts, such as school district for the towns, regional school districts, charter schools, and regional education service centers. This report utilizes the classification of school districts and their respective schools as defined by the SDE. A total of 1,063 schools reported 25,576 students with asthma. Appendix 1 lists school districts and schools that reported for school calendar year 2020-2021.

Table 1. Records submitted by School level, by HAR-required grades. Public schools, Connecticut 2020.

Grade Level	HAR-grades		Non-HAR grades		Total
	n	(%)	n	(%)	n
Elementary	4,628	52.8	4,129	47.2	8,757
Middle	6,037	86.4	950	13.6	6,987
High	5,914	70.6	2,468	29.4	8,382
All	16,579	68.7	7,547	31.3	24,126

Table 1 describes the distribution of records submitted by grade level and HAR-required classification for public schools. Overall, 24,126 records were submitted from public schools, of them 16,579 (68.7%) were from HAR-required grades and about one-third, 7,547 (31.3%), from non-HAR required grades.

#### A. Data Completeness

Asthma reports were assessed for data completeness for gender, ethnicity and race, and asthma severity. Gender was specified for all records, 100% completion. A total of 3,041 records (12.6%) of students with asthma did not specify race. A total of 3,462 (14.3%) records of students with asthma were reported with unknown ethnicity. A total of 7,700 (31.9%) records did not specify the level of asthma severity.

The enrollment dataset for public schools had 114 (0.1%) records with an unknown gender value. All records had an ethnicity designation other than 'Other' or 'Unknown'. All enrollment records had a race designation other than 'Other' or 'Unknown'. There were no records with missing values.

Of the records of student with asthma that were matched to enrollment data, 42.4% were accounted from PK (7.2%) and K (35.2%) grades among elementary school level; for middle school level 86.0% were from sixth (36.9%) and seventh (49.2%) grade, and 69.8% of high school level were from ninth (25.8%) and tenth (44.0%) grade.

Table 2 shows the frequency distribution of responding schools as classified by the SDE organization type by reporting status. A total of 1,166 educational institutions provided a response to the SBASS, of these 1,162 'Completed' the report, while four submitted incomplete data. The latter schools were excluded from the analysis. When SDE's organization type were re-categorized to group schools as either a public facility, private, or other, it was found that 941 (98.8%) of public schools responded and completed their report.

Table 2. Response rates: facility type, by reporting status. CT, 2020.

School Type	Organization Type	Report Status						
		Completed		In progress		Not Started		Total
		#	%	#	%	#	%	#
Other	Program	68	19.6	0	0	279	80.4	347
Private	Nonpublic Elementary and Secondary Schools	153	49.8	1	0.3	153	49.8	307
Public	CT Technical Education and Career Schools	17	100.0	0	0	0	0	17
	Endowed and Incorporated Academies Schools	3	100.0	0	0	0	0	3
	Public Charter Schools	20	95.2	0	0	1	4.8	21
	Public Schools – Town based	828	99.3	3	0.4	3	0.4	834
	Regional Education Service Center Schools	20	83.3	0	0	4	16.7	24
	Regional Schools	53	100.0	0	0	0	0	53
	<b>All Public Schools</b>	<b>941</b>	<b>98.8</b>	<b>3</b>	<b>0.3</b>	<b>8</b>	<b>0.8</b>	<b>952</b>
Total		1162	72.4	4	0.2	440	27.4	1606

## B. Asthma Prevalence by Demographics

Table 3. Asthma Prevalence by Demographics, Connecticut Public Schools, 2020

Demographic Characteristics	Asthma Prevalence	
	%	95% CI
Total	12.9	(12.8 -13.1)
<b>School Level</b>		
Elementary	11.7	(11.4 -12.1)
Middle	13.3	(13.0 -13.6)
High	13.8	(13.4 -14.1)
<b>Gender</b>		
Male	14.7	(14.4 -14.9)
Female	12.3	(12.0 -12.5)
<b>Race/Ethnicity</b>		
Non-Hispanic White	10.7	(10.4 -11.0)
Non-Hispanic Black	18.5	(17.8 -19.2)
Hispanic	15.7	(15.3 -16.1)
Non-Hispanic Other	12.1	(11.3 -12.8)

A previous report included school calendar years 2012-2014, with an overall rate of 14.3%, showing an overall steady yearly asthma prevalence, with 14.4% for 2012 and 14.3% for 2013 and 2014. Analysis for 2020-2021 school calendar year has been tabulated into different categories. Table 3 displays the information for the year, by school level, by gender, and by race/ethnicity.

The overall asthma prevalence of 12.9% for 2020 represents a decrease from the previous report. This prevalence indicates that one out of every eight students is affected with asthma in public schools. At the school level, asthma prevalence was statistical significantly higher among middle school (13.3%) and high school (13.8%) students, compared to elementary school (11.7%) students. This represents a shift as the previous report indicated elementary school students had the highest asthma prevalence.

The prevalence among male students (14.7%) is statistical significantly higher than female students (12.3%). Although the gender prevalence follows the same trend as the previous report, prevalence among males shows a statistically significant decrease compared to the previous report (16.0%). The asthma prevalence is highest among non-Hispanic black students (18.5%), followed by Hispanic (15.7%), other non-Hispanic (12.1%), and non-Hispanic white (10.7%) students; the differences between students within each racial/ethnic group are statistically significant.

Table 4 presents the breakdown of school level asthma prevalence by demographic characteristics. Accordingly, middle school and high school students have higher asthma prevalence than elementary school students. By gender, males have a higher prevalence than females at each educational level. Additionally, females in middle school (12.0%) and high school (13.3%) have a higher prevalence than females in elementary school (11.3%).

Under Race/Ethnicity, non-Hispanic white students in middle school (10.7%) and high school (11.4%) have a statistically higher prevalence than those in elementary school (9.9%). Non-Hispanic black students in elementary school (20.5%) and middle school (18.9%) have a statistically higher prevalence than those in high school (16.7%). Hispanic students in middle school (16.5%) have a statistically higher prevalence than those in high school (14.8%) and a

higher prevalence than those in elementary school (15.9%), but the difference was not statistically significant.

Table 4. Asthma Prevalence: Demographics by School Level, Connecticut Public Schools, 2020

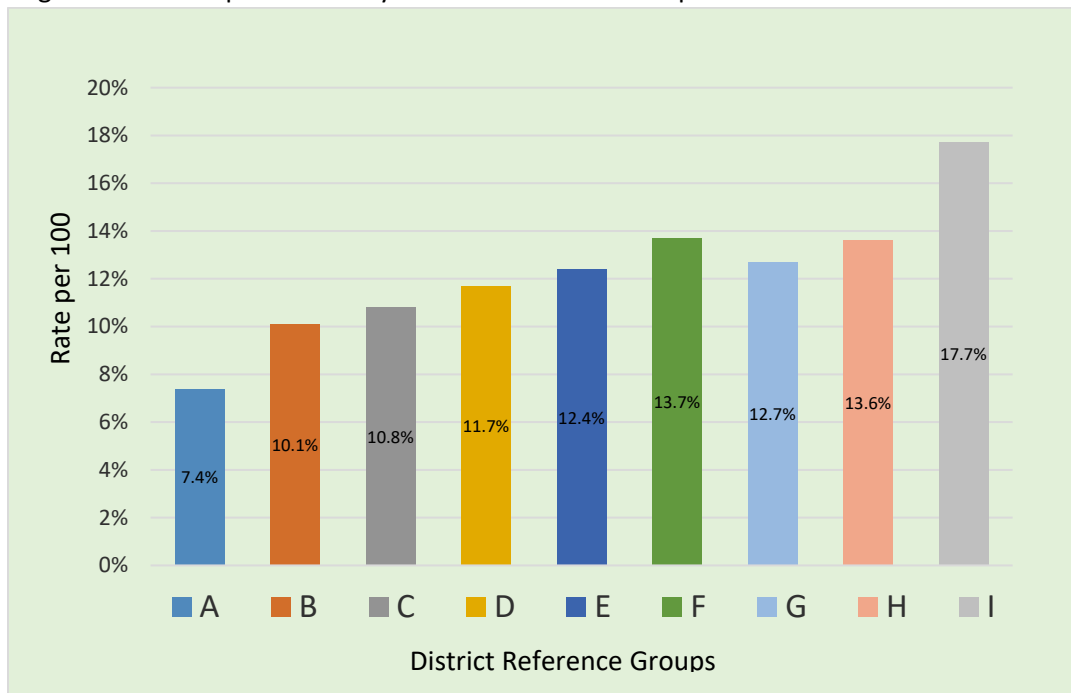
Demographic Characteristics	Elementary School		Middle School		High School	
	%	95% CI	%	95% CI	%	95% CI
Total	11.7	(11.4 -12.1)	13.3	(13.0 -13.6)	13.8	(13.4 -14.1)
<b>Gender</b>						
Male	14.3	(13.9 -14.8)	15.1	(14.6 -15.6)	14.5	(14.0 -15.0)
Female	11.3	(10.8 -11.7)	12.0	(11.6 -12.5)	13.3	(12.9 -13.8)
<b>Race/Ethnicity</b>						
Non-Hispanic White	9.9	(9.4 -10.3)	10.7	(10.2 -11.1)	11.4	(11.0 -11.9)
Non-Hispanic Black	20.5	(19.0 -21.9)	18.9	(17.7 -20.1)	16.7	(15.5 -17.8)
Hispanic	15.9	(15.1 -16.6)	16.5	(15.8 -17.3)	14.8	(14.1 -15.5)
Non-Hispanic Other	14.2	(12.6 -15.7)	11.2	(9.9 -12.4)	11.4	(10.2 -12.6)

### C. Asthma Prevalence by District Reference Groups

Figure 1 shows asthma prevalence by District Reference Groups (DRG). DRG<sup>2</sup> is a classification system used by the SDE, which groups local public school districts according to indicators of socioeconomic status (family income, parental education, and parental occupation), indicators of need (percentage of public school children in single parent families, percentage of students income-eligible to receive free/reduced-price meals, and percent of students that speak a language other than English at home), and enrollment data.

The DRG classification categorizes public school districts into nine groups, from group A as the very affluent, low-need district, to group I as districts with low socio-economic status, high-need. As shown in Figure 1, school districts classified as DRG A have the lowest asthma prevalence and school districts classified as DRG I have the highest asthma prevalence. Overall, at each decreasing instance of DRG classification, the asthma prevalence increases. DRG asthma prevalence ranged from 7.4 % for DRG A, to 17.7% for DRG I.

Figure 1. Asthma prevalence by District Reference Group. Connecticut 2020.



<sup>2</sup> Connecticut State Department of Education. (2006). Research Bulletin: District Reference Groups, 2006. Retrieved from [http://sdeportal.ct.gov/Cedar/Files/Pdf/Reports/db\\_drg\\_06\\_2006.pdf](http://sdeportal.ct.gov/Cedar/Files/Pdf/Reports/db_drg_06_2006.pdf). Accessed on December 2, 2021.

Table 5 shows the average asthma prevalence for each of the DRG classification, by specific demographic characteristics.

Table 5. Asthma Prevalence: Demographics by District Reference Groups (DRG). Connecticut Public Schools, 2020.

Demographic Characteristics	A		B		C	
	%	95% CI	%	95% CI	%	95% CI
Total	7.4	(6.7 - 8.0)	10.1	(9.7 - 10.5)	10.8	(10.1 - 11.5)
<b>School Level</b>						
Elementary	6.7	(5.6 - 7.8)	9.2	(8.4 - 9.9)	10.0	(8.8 - 11.1)
Middle	8.4	(7.2 - 9.5)	9.8	(9.2 - 10.5)	9.9	(8.7 - 11.0)
High	7.0	(5.9 - 8.0)	11.1	(10.3 - 11.8)	12.5	(11.2 - 13.7)
<b>Gender</b>						
Male	8.8	(7.8 - 9.7)	11.5	(10.9 - 12.1)	12.5	(11.4 - 13.5)
Female	6.7	(5.8 - 7.6)	9.4	(8.8 - 9.9)	10.1	(9.1 - 11.0)
<b>Race/Ethnicity</b>						
Non-Hispanic White	6.7	(6.0 - 7.4)	9.4	(8.9 - 9.9)	10.5	(9.7 - 11.3)
Non-Hispanic Black	26.5	(11.6 - 41.3)	24.4	(20.7 - 28.1)	30.2	(17.8 - 42.5)
Hispanic	11.6	(7.7 - 15.5)	13.5	(11.9 - 15.0)	17.6	(13.3 - 22.0)
Non-Hispanic Other	6.4	(4.2 - 8.5)	9.1	(7.8 - 10.4)	14.8	(9.3 - 20.3)

Demographic Characteristics	D		E		F	
	%	95% CI	%	95% CI	%	95% CI
Total	11.7	(11.3 - 12.2)	12.4	(11.4 - 13.4)	13.7	(12.8 - 14.7)
<b>School Level</b>						
Elementary	10.4	(9.5 - 11.2)	10.6	(9.0 - 12.2)	12.9	(11.3 - 14.5)
Middle	12.5	(11.6 - 13.3)	13.9	(12.3 - 15.6)	13.7	(12.1 - 15.3)
High	12.3	(11.4 - 13.1)	12.2	(10.2 - 14.2)	14.7	(12.9 - 16.4)
<b>Gender</b>						
Male	12.9	(12.2 - 13.6)	15.3	(13.7 - 16.9)	16.1	(14.7 - 17.5)
Female	11.2	(10.5 - 11.9)	11.9	(10.4 - 13.3)	13.2	(11.8 - 14.6)
<b>Race/Ethnicity</b>						
Non-Hispanic White	10.5	(9.9 - 11.1)	11.2	(10.1 - 12.3)	11.6	(10.5 - 12.7)
Non-Hispanic Black	23.1	(20.0 - 26.1)	28.9	(14.5 - 43.4)	21.8	(15.9 - 27.6)
Hispanic	15.1	(13.6 - 16.5)	23.2	(17.4 - 28.9)	19.6	(16.4 - 22.9)
Non-Hispanic Other	10.6	(8.9 - 12.3)	25.0	(15.3 - 34.7)	16.8	(12.2 - 21.4)

Demographic Characteristics	G		H		I	
	%	95% CI	%	95% CI	%	95% CI
Total	12.7	(12.2 - 13.3)	13.6	(13.1 - 14.2)	17.7	(17.1 - 18.2)
<b>School Level</b>						
Elementary	12.5	(11.6 - 13.5)	12.6	(11.7 - 13.5)	15.3	(14.4 - 16.1)
Middle	12.4	(11.4 - 13.4)	15.1	(14.1 - 16.1)	18.8	(17.9 - 19.7)
High	13.4	(12.3 - 14.5)	13.2	(12.3 - 14.2)	18.9	(17.9 - 19.9)
<b>Gender</b>						
Male	14.4	(13.6 - 15.3)	15.3	(14.5 - 16.0)	19.9	(19.1 - 20.7)
Female	12.1	(11.2 - 12.9)	12.5	(11.8 - 13.3)	16.8	(16.0 - 17.6)
<b>Race/Ethnicity</b>						
Non-Hispanic White	12.5	(11.6 - 13.4)	11.6	(10.6 - 12.7)	17.1	(15.3 - 18.9)
Non-Hispanic Black	15.6	(13.8 - 17.4)	19.3	(17.6 - 21.0)	19.0	(17.8 - 20.1)
Hispanic	14.4	(13.1 - 15.6)	13.2	(12.5 - 14.0)	18.2	(17.4 - 18.9)
Non-Hispanic Other	14.4	(12.1 - 16.7)	13.4	(11.2 - 15.7)	19.2	(16.0 - 22.4)

## D. Asthma Severity

The framework used to classify asthma severity is based on the Expert Panel Report (EPR) 3 Guidelines for the Diagnosis and Management of Asthma<sup>3</sup>. Accordingly, clinicians use the current impairment (nighttime awakenings, short-acting Beta2-agonist use, missed work/school days, normal daily activities engagement, quality-of-life assessments, and spirometry) domain and future risk (adverse effects, exacerbations, and progressive worsening of symptoms) domain as criterion for asthma severity classification. Asthma classification is important as it helps guide the type, amount, and scheduling of medication therapy.

Table 6 shows asthma severity classification for the following categories: overall, school type, school level, gender, race, ethnicity, and DRG. Due to the small number of reported students classified as having moderate persistent or severe persistent, this report groups them together, thus the asthma severity is reported in the following groups: Intermittent, mild persistent, and moderate/severe persistent.

Table 6. Asthma Severity Classification by Demographic Characteristics, Connecticut Public and Private Schools, 2020.

Demographic Characteristics	Intermittent %	Mild Persistent %	Moderate or Severe Persistent %	Unclassified %
Total	48.5	14.9	4.8	31.7
<b>School Type</b>				
Private	53.0	14.3	4.0	28.7
Public	48.3	15.0	4.8	31.9
<b>School Level</b>				
Elementary	50.3	15.8	5.2	28.7
Middle	50.3	14.1	4.8	30.9
High	45.3	14.8	4.4	35.4
<b>Gender</b>				
Female	47.5	14.1	4.6	33.8
Male	49.3	15.6	4.9	30.2
<b>Race/Ethnicity</b>				
Non-Hispanic White	49.5	14.5	4.0	32.0
Non-Hispanic Black	51.4	15.4	6.1	27.1
Hispanic	49.8	16.3	5.7	28.2
Non-Hispanic Other	49.8	15.5	4.6	30.1
Unknown	41.4	13.2	4.0	41.4

<sup>3</sup> National Heart, Lung, and Blood Institute. (2007). The Expert Panel Report 3: Guidelines for the Diagnosis and management of Asthma, National Asthma Education and Prevention Program. Retrieved from [https://www.nhlbi.nih.gov/sites/default/files/media/docs/EPR-3\\_Asthma\\_Full\\_Report\\_2007.pdf](https://www.nhlbi.nih.gov/sites/default/files/media/docs/EPR-3_Asthma_Full_Report_2007.pdf). Accessed on December 2, 2021.



For each of the categories presented in Table 6, the proportion of asthma severity level is greatest among those classified as having intermittent (48.5%) asthma, followed by mild persistent (14.9%), and moderate or severe persistent (4.8%) asthma. This represents a shift in level of severity from the previous report, where mild persistent asthma was the most prevalent. Of note, nearly one-third of reports were categorized as unclassified severity, which may not mean students under this classification do not have a medical categorization of asthma severity, rather it is likely level of severity was not noted in the HAR. This high percentage of unclassified severity may limit our understanding of the true asthma severity among students with asthma.

Table 6. Continued

Demographic Characteristics	Intermittent %	Mild Persistent %	Moderate or Severe Persistent %	Unclassified %
<b>DRG</b>				
A	36.1	14.0	3.8	46.0
B	48.2	15.0	4.0	32.8
C	46.3	12.5	3.5	37.7
D	55.3	14.4	3.4	26.9
E	47.5	12.8	3.2	36.5
F	52.2	15.3	5.2	27.3
G	51.3	13.6	4.4	30.7
H	50.7	16.4	4.6	28.4
I	46.2	15.6	6.0	32.3

Moderate or severe persistent form of asthma has been linked to increased likelihood for hospitalization or emergency department visit. Overall, 4.8% of students are affected with the moderate or severe persistent form of asthma. Students from public schools, compared to private schools, show a higher percentage of moderate or severe persistent form of asthma, 4.8% versus 4.0%, respectively. Students at the elementary school (5.2%) are affected the most with this form of asthma severity, followed by students at the middle school (4.8%) and high school (4.4%). Non-Hispanic black students (6.1%) have the highest percentage with moderate or severe persistent form of asthma, followed by Hispanic students (5.7%), other non-Hispanic students (4.6%), and non-Hispanic white students (4.0%). Students whose school districts are classified as DRG I (6.0%) are the most affected compared to any other DRG class.

## E. Asthma Action Plan

Table 7. Percentage of Students with Asthma with an Asthma Action Plan (AAP) by Demographic Characteristics, Connecticut Public and Private Schools, 2020.

Demographic Characteristics	Has Asthma Action Plan (%)	
	No (%)	Yes (%)
<b>Total</b>	<b>83.6</b>	<b>16.4</b>
<b>School Type</b>		
Private	67.7	32.3
Public	84.5	15.5
<b>School Level</b>		
Elementary	78.3	21.7
Middle	84.5	15.5
High	88.1	11.9
<b>Gender</b>		
Male	83.3	16.7
Female	83.9	16.1
<b>Race/Ethnicity</b>		
Non-Hispanic White	82.8	17.2
Non-Hispanic Black	80.3	19.7
Hispanic	84.7	15.3
Non-Hispanic Other	84.8	15.2
Unknown	85.7	14.3
<b>Asthma Severity</b>		
Intermittent	82.7	17.3
Mild Persistent	77.2	22.8
Moderate or Severe Persistent	68.1	31.9
Unknown	90.2	9.8
<b>DRG</b>		
A	84.9	15.1
B	83.8	16.2
C	86.7	13.3
D	84.0	16.0
E	78.0	22.0
F	75.9	24.1
G	83.9	16.1
H	86.8	13.2
I	84.7	15.3

The Expert Panel, as well as the Centers for Disease Control and Prevention (CDC), recommends that each patient with asthma have their own written Asthma Action Plan (AAP)<sup>4</sup>. The AAP is designed based on signs and symptoms and/or spirometry results. The AAP is a written plan that is mutually developed by the clinician and the patient in an effort to control asthma episodes and/or exacerbations. The plan lists all the patient's medications with instructions on how and when to administer them to prevent episodes or during an exacerbation.

Table 7 presents percentage of students with asthma with an AAP by demographic characteristics. Overall, 16.4% of students with asthma were assessed as having an AAP, as reported from the HAR.

This finding represents an increase of six percentage points compared to the previous report (10.6%).

<sup>4</sup> Centers for Disease Control and Prevention. (2020). Asthma Action Plan. Retrieved from <http://www.cdc.gov/asthma/actionplan.html>. Accessed on December 2, 2021.

The proportion of students with asthma with an AAP was higher among those in private school (32.3%), about two-fold, than those in the public school system (15.5%). This finding also represents an increase from the previous report, about two-fold for private schools and 5.3 percentage points for public schools.

Given the school level, the higher the school level, the lower the proportion of students with an AAP. Elementary school (21.7%) had the highest proportion of students with their AAP, followed by middle school (15.5%) and high school (11.9%). The proportion of students with an AAP among males (16.7%) was very similar to females (16.1%).

A higher proportion of non-Hispanic black students (19.7%) have an AAP, followed by non-Hispanic white students (17.2%), Hispanic students (15.3%) and other non-Hispanic students (15.2%). A higher proportion of students affected with moderate or severe persistent asthma have an AAP (31.9%), compared to those with mild persistent (22.8% have an AAP) or intermittent (17.3% have an AAP) forms of asthma.

When AAP was analyzed based on the DRG classification, it showed that DRG F (24.1%) had the greatest proportion of students with an AAP, followed by DRG E (22.0%). All other DRGs fell below the 20% level, ranging from 13.2% (DRG H) to 16.2% (DRG B). An implicit relationship between a school's DRG classification and the proportion of students having an AAP could not be observed.

## F. Asthma Documentation and Health History

The SBASS survey requests asthma documentation information as submitted in the HAR or as evidenced by the school nurse. The HAR form is filled out by both the child's parent/guardian and the clinician performing the physical examination, in their corresponding sections.

Table 8. Percentage of Students with Various Asthma Documentation and Health History, Connecticut Public and Private Schools, 2020.

Asthma Documentation	Yes (%)
Has Provider Diagnosis on HAR	82.7
Has Provider Medication Order	29.9
Has Self-Carry Medication Approval	8.6
Has Asthma Medication in School	20.4
Has Parental Note	20.7
Has Asthma Symptoms Observed	4.5
Health History (HAR Part I)	Yes (%)
Problem breathing or coughing	14.1
Asthma treatment (past 3 years)	37.0

Table 8 provides the percentage of students with the different types of asthma documentation and asthma-related health history that was provided in their HAR to a school nurse. Approximately, four out of five students (82.7%) with asthma have their diagnosis documented in their HAR; about one-third (29.9%) have a medication order in their HAR; 8.6% have self-carry medication approval; 20.4% have asthma medication in school; 20.7% have an asthma-related parent's note; and, 4.5% had asthma symptoms observed.

HAR Part I is a section that is filled out by the student's parent/guardian. Approximately one out of every seven students with asthma (14.1%) have been identified as having problems with breathing or coughing by their parents/guardian, and 37.0% of students with asthma have had an asthma treatment in the past 3 years.

## G. School District Profile on Asthma

Table 9 tabulates school district information on asthma prevalence, asthma severity, and AAPs. Statistics reflect data that was reported by each of the schools and grouped in their corresponding districts. Asthma prevalence were provided for the overall school district, school level, gender, and racial/ethnic groups. Certain information was suppressed at the school district level to ensure confidentiality of student information and provision of reliable rates. For asthma prevalence, 'N/A' indicates that a prevalence estimate is not available because: the sample size for the denominator was < 30, the Relative Standard Error (RSE) was > 0.3, or the information was not reported. For asthma severity, 'N/A' indicates the percentage is not available as there were less than 20 cases with asthma severity reported. For AAP, 'N/A' indicates that the percentage is not available as there were less than 20 students with asthma reported.

Table 9. School District Profile. Connecticut 2020

School District	Achievement First Bridgeport Academy District	Achievement First Hartford Academy District	Amistad Academy District
<b>Asthma Prevalence</b>	<b>% (95% CI)</b>	<b>% (95% CI)</b>	<b>% (95% CI)</b>
Overall	8.9 (4.8 - 12.9)	26.8 (21.1 - 32.5)	23.3 (18.3 - 28.4)
Elementary School	12.5 (5.9 - 19.1)	N/A	N/A
Middle School	N/A	25.3 (16.5 - 34.0)	21.2 (13.2 - 29.3)
High School	N/A	37.5 (26.9 - 48.1)	41.8 (30.9 - 52.6)
Male	13.6 (6.1 - 21.0)	33.6 (24.9 - 42.3)	29.8 (21.6 - 37.9)
Female	N/A	20.7 (13.4 - 27.9)	18.1 (11.9 - 24.3)
Non-Hispanic White	N/A	N/A	N/A
Non-Hispanic Black	N/A	N/A	19.0 (12.9 - 25.1)
Hispanic	N/A	24.6 (13.4 - 35.7)	19.6 (11.9 - 27.3)
Non-Hispanic Other	N/A	N/A	N/A
<b>Asthma Severity</b>	<b>%</b>	<b>%</b>	<b>%</b>
Intermittent	N/A	95.2	46.0
Mild Persistent	N/A	3.2	17.5
Moderate or Severe Persistent	N/A	N/A	6.3
Unclassified	N/A	1.6	30.2
<b>Asthma Action Plan (AAP)</b>	<b>%</b>	<b>%</b>	<b>%</b>
Has AAP	N/A	17.5	23.8
School District	Ansonia School District	Area Cooperative Educational Services	Ashford School District
<b>Asthma Prevalence</b>	<b>% (95% CI)</b>	<b>% (95% CI)</b>	<b>% (95% CI)</b>
Overall	18.6 (15.1 - 22.1)	22.9 (18.1 - 27.7)	13.9 (5.9 - 21.9)
Elementary School	16.7 (11.2 - 22.1)	N/A	N/A
Middle School	20.3 (14.4 - 26.3)	22.9 (18.1 - 27.7)	N/A
High School	18.9 (11.9 - 25.8)	N/A	N/A
Male	18.5 (13.8 - 23.1)	21.7 (14.9 - 28.4)	N/A
Female	18.8 (13.4 - 24.1)	24.0 (17.2 - 30.8)	N/A
Non-Hispanic White	20.7 (14.0 - 27.4)	19.6 (8.1 - 31.0)	N/A
Non-Hispanic Black	28.3 (19.1 - 37.5)	17.1 (8.6 - 25.6)	N/A
Hispanic	13.3 (8.8 - 17.8)	24.7 (17.7 - 31.6)	N/A
Non-Hispanic Other	N/A	N/A	N/A
<b>Asthma Severity</b>	<b>%</b>	<b>%</b>	<b>%</b>
Intermittent	65.4	59.7	N/A
Mild Persistent	22.1	9.0	N/A
Moderate or Severe Persistent	1.0	6.0	N/A
Unclassified	11.5	25.4	N/A
<b>Asthma Action Plan (AAP)</b>	<b>%</b>	<b>%</b>	<b>%</b>
Has AAP	23.1	56.7	N/A
School District	Avon School District	Berlin School District	Bethany School District
<b>Asthma Prevalence</b>	<b>% (95% CI)</b>	<b>% (95% CI)</b>	<b>% (95% CI)</b>
Overall	4.9 (3.3 - 6.6)	14.5 (11.6 - 17.3)	10.2 (4.2 - 16.2)
Elementary School	6.1 (2.7 - 9.4)	10.2 (5.6 - 14.8)	N/A
Middle School	N/A	15.9 (10.8 - 21.0)	N/A
High School	6.2 (3.0 - 9.3)	16.4 (11.5 - 21.3)	N/A
Male	6.0 (3.4 - 8.5)	14.5 (10.5 - 18.4)	N/A
Female	4.0 (1.9 - 6.0)	14.4 (10.3 - 18.5)	N/A
Non-Hispanic White	5.6 (3.4 - 7.8)	13.4 (10.3 - 16.6)	N/A
Non-Hispanic Black	N/A	N/A	N/A
Hispanic	N/A	N/A	N/A
Non-Hispanic Other	N/A	N/A	N/A
<b>Asthma Severity</b>	<b>%</b>	<b>%</b>	<b>%</b>
Intermittent	53.8	47.1	50.0
Mild Persistent	30.8	10.3	15.4
Moderate or Severe Persistent	7.7	3.4	7.7
Unclassified	7.7	39.1	26.9
<b>Asthma Action Plan (AAP)</b>	<b>%</b>	<b>%</b>	<b>%</b>
Has AAP	5.1	11.5	50.0

<sup>1</sup>N/A = Prevalence estimate not available if: the sample size for the denominator was < 30; the Relative Standard Error (RSE) is > 0.3; or the information was not reported. <sup>2</sup>N/A = Percentage not available if there were less than 20 cases with asthma severity reported. Percentage may not add up to 100% due to rounding. <sup>3</sup>N/A = Percentage not available if there were less than 20 students with asthma reported.

Table 9. School District Profile. Connecticut 2020

School District	Bethel School District	Bloomfield School District	Bolton School District
<b>Asthma Prevalence</b>	<b>% (95% CI)</b>	<b>% (95% CI)</b>	<b>% (95% CI)</b>
Overall	12.5 (10.4 - 14.6)	15.4 (12.7 - 18.1)	10.6 (6.2 - 15.0)
Elementary School	6.8 (4.4 - 9.3)	8.8 (6.0 - 11.5)	N/A
Middle School	17.8 (13.2 - 22.3)	26.0 (19.0 - 33.0)	N/A
High School	16.0 (11.5 - 20.4)	22.6 (15.8 - 29.4)	15.2 (7.3 - 23.1)
Male	15.7 (12.4 - 19.0)	16.6 (12.7 - 20.5)	13.4 (6.6 - 20.2)
Female	10.0 (7.3 - 12.7)	14.2 (10.5 - 17.8)	N/A
Non-Hispanic White	11.4 (8.9 - 14.0)	N/A	N/A
Non-Hispanic Black	N/A	20.2 (14.9 - 25.4)	N/A
Hispanic	11.8 (7.5 - 16.1)	20.3 (10.1 - 30.6)	N/A
Non-Hispanic Other	10.7 (5.0 - 16.4)	N/A	N/A
<b>Asthma Severity</b>	<b>%</b>	<b>%</b>	<b>%</b>
Intermittent	48.4	51.8	70.0
Mild Persistent	20.5	14.5	5.0
Moderate or Severe Persistent	3.1	4.5	N/A
Unclassified	28.0	29.1	25.0
<b>Asthma Action Plan (AAP)</b>	<b>%</b>	<b>%</b>	<b>%</b>
Has AAP	4.0	15.5	0.0
School District	Booker T. Washington Academy District	Branford School District	Bridgeport School District
<b>Asthma Prevalence</b>	<b>% (95% CI)</b>	<b>% (95% CI)</b>	<b>% (95% CI)</b>
Overall	28.2 (19.8 - 36.6)	12.1 (9.4 - 14.8)	18.5 (17.4 - 19.6)
Elementary School	31.0 (20.2 - 41.7)	11.5 (6.8 - 16.2)	18.3 (16.5 - 20.2)
Middle School	23.1 (9.9 - 36.3)	14.3 (9.3 - 19.3)	19.0 (17.1 - 20.9)
High School	N/A	10.6 (6.4 - 14.8)	18.1 (16.1 - 20.2)
Male	35.5 (23.6 - 47.4)	13.3 (9.5 - 17.1)	21.6 (20.0 - 23.2)
Female	22.0 (10.5 - 33.5)	11.6 (7.7 - 15.5)	17.7 (16.1 - 19.3)
Non-Hispanic White	N/A	11.7 (7.5 - 15.8)	18.3 (14.1 - 22.5)
Non-Hispanic Black	29.3 (20.0 - 38.7)	N/A	18.7 (16.6 - 20.8)
Hispanic	N/A	14.8 (7.4 - 22.2)	18.8 (17.2 - 20.3)
Non-Hispanic Other	N/A	N/A	23.9 (15.9 - 31.9)
<b>Asthma Severity</b>	<b>%</b>	<b>%</b>	<b>%</b>
Intermittent	46.8	48.6	38.3
Mild Persistent	25.2	18.3	15.2
Moderate or Severe Persistent	8.1	3.7	4.9
Unclassified	19.8	29.4	41.6
<b>Asthma Action Plan (AAP)</b>	<b>%</b>	<b>%</b>	<b>%</b>
Has AAP	23.4	40.4	9.0
School District	Bristol School District	Brookfield School District	Brooklyn School District
<b>Asthma Prevalence</b>	<b>% (95% CI)</b>	<b>% (95% CI)</b>	<b>% (95% CI)</b>
Overall	15.6 (13.9 - 17.3)	4.5 (3.0 - 5.9)	14.0 (8.8 - 19.2)
Elementary School	16.4 (13.6 - 19.3)	N/A	N/A
Middle School	14.3 (11.4 - 17.3)	N/A	18.3 (10.4 - 26.1)
High School	15.8 (12.8 - 18.7)	11.1 (7.1 - 15.1)	N/A
Male	17.0 (14.6 - 19.3)	4.0 (2.1 - 5.9)	19.2 (10.5 - 28.0)
Female	14.5 (12.2 - 16.8)	5.1 (2.8 - 7.3)	N/A
Non-Hispanic White	16.4 (14.0 - 18.8)	7.3 (4.3 - 10.3)	9.4 (4.5 - 14.2)
Non-Hispanic Black	20.8 (14.3 - 27.3)	N/A	N/A
Hispanic	17.1 (14.2 - 20.0)	N/A	N/A
Non-Hispanic Other	18.7 (12.1 - 25.3)	N/A	N/A
<b>Asthma Severity</b>	<b>%</b>	<b>%</b>	<b>%</b>
Intermittent	51.6	40.5	41.9
Mild Persistent	15.7	16.7	6.5
Moderate or Severe Persistent	5.0	21.4	N/A
Unclassified	27.7	21.4	51.6
<b>Asthma Action Plan (AAP)</b>	<b>%</b>	<b>%</b>	<b>%</b>
Has AAP	6.4	66.7	19.4

<sup>1</sup>N/A = Prevalence estimate not available if: the sample size for the denominator was < 30; the Relative Standard Error (RSE) is > 0.3; or the information was not reported. <sup>2</sup>N/A = Percentage not available if there were less than 20 cases with asthma severity reported. Percentage may not add up to 100% due to rounding. <sup>3</sup>N/A = Percentage not available if there were less than 20 students with asthma reported.

Table 9. School District Profile. Connecticut 2020

School District	Canterbury School District	Canton School District	Capitol Region Education Council
<b>Asthma Prevalence</b>	<b>% (95% CI)</b>	<b>% (95% CI)</b>	<b>% (95% CI)</b>
Overall	N/A	7.4 (4.6 - 10.2)	16.4 (14.6 - 18.3)
Elementary School	N/A	N/A	15.8 (12.4 - 19.2)
Middle School	N/A	N/A	15.1 (12.4 - 17.7)
High School	N/A	12.0 (6.3 - 17.7)	19.1 (15.5 - 22.7)
Male	N/A	8.0 (4.0 - 12.1)	16.7 (14.1 - 19.3)
Female	N/A	6.7 (2.9 - 10.6)	17.4 (14.7 - 20.0)
Non-Hispanic White	N/A	4.4 (2.0 - 6.9)	20.0 (14.9 - 25.1)
Non-Hispanic Black	N/A	N/A	10.6 (7.7 - 13.5)
Hispanic	N/A	N/A	14.5 (11.8 - 17.3)
Non-Hispanic Other	N/A	N/A	N/A
<b>Asthma Severity</b>	<b>%</b>	<b>%</b>	<b>%</b>
Intermittent	15.0	76.9	51.1
Mild Persistent	15.0	3.8	6.7
Moderate or Severe Persistent	15.0	N/A	4.0
Unclassified	55.0	19.2	38.1
<b>Asthma Action Plan (AAP)</b>	<b>%</b>	<b>%</b>	<b>%</b>
Has AAP	5.0	0.0	8.7
School District	Cheshire School District	Clinton School District	Colchester School District
<b>Asthma Prevalence</b>	<b>% (95% CI)</b>	<b>% (95% CI)</b>	<b>% (95% CI)</b>
Overall	11.2 (9.5 - 12.9)	20.9 (17.4 - 24.5)	9.7 (7.5 - 12.0)
Elementary School	11.4 (8.2 - 14.6)	17.7 (12.5 - 22.9)	6.3 (3.6 - 9.1)
Middle School	11.7 (9.2 - 14.3)	18.0 (11.3 - 24.6)	14.3 (9.0 - 19.6)
High School	10.2 (7.1 - 13.2)	27.3 (20.5 - 34.1)	11.1 (6.7 - 15.4)
Male	14.3 (11.6 - 17.0)	21.2 (16.3 - 26.1)	8.6 (5.6 - 11.5)
Female	11.4 (8.9 - 13.8)	20.6 (15.4 - 25.8)	10.9 (7.6 - 14.3)
Non-Hispanic White	10.9 (9.0 - 12.8)	20.6 (16.5 - 24.8)	9.0 (6.6 - 11.3)
Non-Hispanic Black	N/A	N/A	N/A
Hispanic	21.1 (11.9 - 30.2)	20.2 (12.1 - 28.3)	N/A
Non-Hispanic Other	10.4 (5.6 - 15.2)	N/A	N/A
<b>Asthma Severity</b>	<b>%</b>	<b>%</b>	<b>%</b>
Intermittent	47.2	79.3	44.0
Mild Persistent	11.4	11.7	12.0
Moderate or Severe Persistent	2.3	2.3	2.7
Unclassified	39.1	6.6	41.3
<b>Asthma Action Plan (AAP)</b>	<b>%</b>	<b>%</b>	<b>%</b>
Has AAP	22.8	29.3	9.3
School District	Columbia School District	Common Ground High School District	Connecticut Technical Education and Career System
<b>Asthma Prevalence</b>	<b>% (95% CI)</b>	<b>% (95% CI)</b>	<b>% (95% CI)</b>
Overall	18.0 (10.0 - 26.0)	17.5 (7.7 - 27.4)	15.7 (14.3 - 17.0)
Elementary School	N/A	N/A	N/A
Middle School	N/A	N/A	N/A
High School	N/A	17.5 (7.7 - 27.4)	15.7 (14.3 - 17.0)
Male	22.0 (10.5 - 33.5)	N/A	16.0 (14.3 - 17.7)
Female	N/A	N/A	17.3 (15.0 - 19.6)
Non-Hispanic White	16.0 (8.1 - 24.0)	N/A	15.7 (13.7 - 17.8)
Non-Hispanic Black	N/A	N/A	9.6 (6.1 - 13.1)
Hispanic	N/A	N/A	12.3 (10.5 - 14.2)
Non-Hispanic Other	N/A	N/A	14.4 (8.4 - 20.4)
<b>Asthma Severity</b>	<b>%</b>	<b>%</b>	<b>%</b>
Intermittent	48.8	9.4	42.8
Mild Persistent	11.6	N/A	24.9
Moderate or Severe Persistent	N/A	N/A	9.2
Unclassified	39.5	90.6	23.1
<b>Asthma Action Plan (AAP)</b>	<b>%</b>	<b>%</b>	<b>%</b>
Has AAP	2.3	25.0	3.4

<sup>1</sup>N/A = Prevalence estimate not available if: the sample size for the denominator was < 30; the Relative Standard Error (RSE) is > 0.3; or the information was not reported. <sup>2</sup>N/A = Percentage not available if there were less than 20 cases with asthma severity reported. Percentage may not add up to 100% due to rounding. <sup>3</sup>N/A = Percentage not available if there were less than 20 students with asthma reported.



Table 9. School District Profile. Connecticut 2020

School District	Cooperative Educational Services	Coventry School District	Cromwell School District
<b>Asthma Prevalence</b>	<b>% (95% CI)</b>	<b>% (95% CI)</b>	<b>% (95% CI)</b>
Overall	12.5 (5.9 - 19.1)	13.3 (9.8 - 16.8)	9.0 (6.5 - 11.6)
Elementary School	N/A	12.6 (6.4 - 18.8)	8.3 (4.0 - 12.7)
Middle School	N/A	9.9 (5.0 - 14.8)	8.9 (4.6 - 13.2)
High School	N/A	18.7 (11.3 - 26.1)	9.9 (5.1 - 14.6)
Male	N/A	16.2 (10.6 - 21.8)	9.6 (5.9 - 13.3)
Female	N/A	10.9 (6.5 - 15.3)	8.4 (4.8 - 12.0)
Non-Hispanic White	N/A	11.5 (8.0 - 14.9)	9.6 (6.4 - 12.8)
Non-Hispanic Black	N/A	N/A	N/A
Hispanic	21.3 (9.6 - 33.0)	N/A	N/A
Non-Hispanic Other	N/A	N/A	N/A
<b>Asthma Severity</b>	<b>%</b>	<b>%</b>	<b>%</b>
Intermittent	N/A	52.1	53.8
Mild Persistent	N/A	6.3	21.2
Moderate or Severe Persistent	N/A	2.1	1.9
Unclassified	N/A	39.6	23.1
<b>Asthma Action Plan (AAP)</b>	<b>%</b>	<b>%</b>	<b>%</b>
Has AAP	N/A	4.2	38.5
School District	Danbury School District	Darien School District	Derby School District
<b>Asthma Prevalence</b>	<b>% (95% CI)</b>	<b>% (95% CI)</b>	<b>% (95% CI)</b>
Overall	8.0 (7.0 - 9.0)	6.9 (5.3 - 8.4)	17.4 (13.5 - 21.4)
Elementary School	9.2 (7.4 - 11.1)	5.2 (2.9 - 7.6)	18.5 (11.7 - 25.4)
Middle School	9.8 (7.9 - 11.8)	8.2 (5.5 - 11.0)	17.9 (10.8 - 25.0)
High School	5.1 (3.7 - 6.5)	6.9 (4.2 - 9.6)	15.8 (9.1 - 22.5)
Male	9.2 (7.8 - 10.7)	7.9 (5.7 - 10.2)	21.4 (15.0 - 27.8)
Female	7.0 (5.6 - 8.4)	6.0 (3.9 - 8.0)	18.6 (12.7 - 24.5)
Non-Hispanic White	5.9 (4.2 - 7.7)	6.7 (5.1 - 8.4)	20.6 (12.6 - 28.7)
Non-Hispanic Black	11.0 (6.2 - 15.8)	N/A	25.5 (13.5 - 37.5)
Hispanic	8.8 (7.4 - 10.1)	N/A	13.3 (7.9 - 18.8)
Non-Hispanic Other	7.7 (4.1 - 11.4)	N/A	N/A
<b>Asthma Severity</b>	<b>%</b>	<b>%</b>	<b>%</b>
Intermittent	45.0	62.8	55.1
Mild Persistent	23.9	10.6	12.0
Moderate or Severe Persistent	3.9	3.2	3.6
Unclassified	27.2	23.4	29.3
<b>Asthma Action Plan (AAP)</b>	<b>%</b>	<b>%</b>	<b>%</b>
Has AAP	21.7	23.4	27.5
School District	East Granby School District	East Haddam School District	East Hampton School District
<b>Asthma Prevalence</b>	<b>% (95% CI)</b>	<b>% (95% CI)</b>	<b>% (95% CI)</b>
Overall	7.6 (4.3 - 10.9)	10.4 (6.1 - 14.7)	9.7 (6.7 - 12.7)
Elementary School	N/A	N/A	N/A
Middle School	N/A	N/A	12.5 (6.9 - 18.1)
High School	N/A	N/A	N/A
Male	10.2 (5.1 - 15.3)	13.8 (6.9 - 20.8)	9.9 (5.6 - 14.2)
Female	N/A	N/A	9.5 (5.3 - 13.6)
Non-Hispanic White	7.6 (3.8 - 11.4)	N/A	10.3 (6.2 - 14.4)
Non-Hispanic Black	N/A	N/A	N/A
Hispanic	N/A	N/A	N/A
Non-Hispanic Other	N/A	N/A	N/A
<b>Asthma Severity</b>	<b>%</b>	<b>%</b>	<b>%</b>
Intermittent	65.0	71.4	41.7
Mild Persistent	17.5	7.1	13.9
Moderate or Severe Persistent	2.5	3.6	2.8
Unclassified	15.0	17.9	41.7
<b>Asthma Action Plan (AAP)</b>	<b>%</b>	<b>%</b>	<b>%</b>
Has AAP	7.5	21.4	22.2

<sup>1</sup>N/A = Prevalence estimate not available if: the sample size for the denominator was < 30; the Relative Standard Error (RSE) is > 0.3; or the information was not reported. <sup>2</sup>N/A = Percentage not available if there were less than 20 cases with asthma severity reported. Percentage may not add up to 100% due to rounding. <sup>3</sup>N/A = Percentage not available if there were less than 20 students with asthma reported.

Table 9. School District Profile. Connecticut 2020

School District	East Hartford School District	East Haven School District	East Lyme School District
<b>Asthma Prevalence</b>	<b>% (95% CI)</b>	<b>% (95% CI)</b>	<b>% (95% CI)</b>
Overall	21.3 (19.2 - 23.4)	13.8 (11.5 - 16.2)	11.3 (8.6 - 13.9)
Elementary School	17.3 (13.8 - 20.7)	12.6 (9.3 - 15.9)	N/A
Middle School	23.0 (19.4 - 26.6)	18.2 (13.1 - 23.3)	13.4 (8.8 - 17.9)
High School	23.5 (19.5 - 27.4)	11.5 (7.2 - 15.9)	10.0 (6.3 - 13.7)
Male	23.4 (20.3 - 26.4)	16.4 (12.9 - 19.9)	15.6 (11.2 - 20.0)
Female	20.4 (17.3 - 23.5)	13.8 (10.1 - 17.5)	7.9 (4.7 - 11.1)
Non-Hispanic White	23.2 (16.3 - 30.2)	15.0 (11.5 - 18.5)	10.6 (7.6 - 13.5)
Non-Hispanic Black	25.9 (21.7 - 30.2)	30.3 (14.6 - 46.0)	N/A
Hispanic	21.4 (18.3 - 24.4)	14.9 (10.6 - 19.3)	N/A
Non-Hispanic Other	16.7 (9.6 - 23.7)	19.1 (7.9 - 30.4)	N/A
<b>Asthma Severity</b>	<b>%</b>	<b>%</b>	<b>%</b>
Intermittent	51.4	57.6	35.5
Mild Persistent	19.9	16.1	21.0
Moderate or Severe Persistent	7.2	4.0	8.1
Unclassified	21.5	22.3	35.5
<b>Asthma Action Plan (AAP)</b>	<b>%</b>	<b>%</b>	<b>%</b>
Has AAP	13.1	38.4	3.2
School District	East Windsor School District	Ellington School District	Elm City College Preparatory School District
<b>Asthma Prevalence</b>	<b>% (95% CI)</b>	<b>% (95% CI)</b>	<b>% (95% CI)</b>
Overall	19.0 (13.7 - 24.2)	11.6 (9.3 - 13.8)	18.7 (11.8 - 25.6)
Elementary School	18.8 (10.5 - 27.1)	11.0 (6.4 - 15.7)	N/A
Middle School	16.2 (7.4 - 24.9)	12.9 (9.7 - 16.1)	20.9 (11.2 - 30.6)
High School	22.4 (11.7 - 33.1)	9.4 (5.4 - 13.4)	N/A
Male	23.0 (15.2 - 30.8)	15.8 (12.2 - 19.5)	25.5 (13.9 - 37.0)
Female	17.9 (10.6 - 25.2)	8.6 (5.7 - 11.4)	N/A
Non-Hispanic White	9.5 (4.2 - 14.8)	13.2 (10.4 - 16.1)	N/A
Non-Hispanic Black	N/A	N/A	18.4 (9.7 - 27.1)
Hispanic	N/A	N/A	N/A
Non-Hispanic Other	N/A	N/A	N/A
<b>Asthma Severity</b>	<b>%</b>	<b>%</b>	<b>%</b>
Intermittent	50.6	62.5	43.5
Mild Persistent	14.5	12.5	21.7
Moderate or Severe Persistent	9.6	1.8	4.3
Unclassified	25.3	23.2	30.4
<b>Asthma Action Plan (AAP)</b>	<b>%</b>	<b>%</b>	<b>%</b>
Has AAP	26.5	20.5	26.1
School District	Enfield School District	Fairfield School District	Farmington School District
<b>Asthma Prevalence</b>	<b>% (95% CI)</b>	<b>% (95% CI)</b>	<b>% (95% CI)</b>
Overall	13.1 (11.0 - 15.2)	7.2 (6.1 - 8.3)	9.2 (7.5 - 10.8)
Elementary School	12.1 (8.5 - 15.7)	7.3 (5.2 - 9.4)	9.9 (6.2 - 13.7)
Middle School	15.0 (11.3 - 18.8)	8.3 (6.4 - 10.2)	9.3 (7.1 - 11.6)
High School	12.0 (8.4 - 15.5)	6.0 (4.3 - 7.7)	8.2 (5.1 - 11.3)
Male	14.0 (11.0 - 16.9)	8.0 (6.3 - 9.6)	10.2 (7.8 - 12.7)
Female	12.1 (9.2 - 15.1)	7.3 (5.7 - 8.9)	8.7 (6.4 - 11.0)
Non-Hispanic White	9.6 (7.4 - 11.8)	7.9 (6.6 - 9.2)	8.2 (6.1 - 10.3)
Non-Hispanic Black	20.0 (8.9 - 31.1)	N/A	21.3 (9.6 - 33.0)
Hispanic	18.8 (12.9 - 24.7)	8.1 (3.7 - 12.4)	20.8 (13.0 - 28.5)
Non-Hispanic Other	N/A	11.5 (5.6 - 17.4)	5.8 (3.2 - 8.3)
<b>Asthma Severity</b>	<b>%</b>	<b>%</b>	<b>%</b>
Intermittent	51.8	50.7	49.6
Mild Persistent	12.1	23.3	20.4
Moderate or Severe Persistent	5.7	3.3	2.7
Unclassified	30.5	22.8	27.4
<b>Asthma Action Plan (AAP)</b>	<b>%</b>	<b>%</b>	<b>%</b>
Has AAP	2.1	9.3	8.0

<sup>1</sup>N/A = Prevalence estimate not available if: the sample size for the denominator was < 30; the Relative Standard Error (RSE) is > 0.3; or the information was not reported. <sup>2</sup>N/A = Percentage not available if there were less than 20 cases with asthma severity reported. Percentage may not add up to 100% due to rounding. <sup>3</sup>N/A = Percentage not available if there were less than 20 students with asthma reported.

Table 9. School District Profile. Connecticut 2020

School District	Glastonbury School District	Granby School District	Great Oaks Charter School District
<b>Asthma Prevalence</b>	<b>% (95% CI)</b>	<b>% (95% CI)</b>	<b>% (95% CI)</b>
Overall	8.1 (6.6 - 9.6)	11.4 (8.3 - 14.4)	13.5 (8.9 - 18.1)
Elementary School	7.4 (4.7 - 10.0)	N/A	N/A
Middle School	9.5 (6.8 - 12.3)	9.3 (4.5 - 14.1)	10.4 (4.8 - 16.0)
High School	7.5 (5.1 - 9.8)	15.1 (9.5 - 20.7)	17.0 (9.6 - 24.4)
Male	10.4 (8.0 - 12.8)	9.5 (5.6 - 13.4)	14.7 (7.8 - 21.6)
Female	6.3 (4.4 - 8.1)	13.6 (8.6 - 18.5)	14.8 (8.3 - 21.3)
Non-Hispanic White	5.3 (3.8 - 6.8)	10.6 (7.4 - 13.8)	N/A
Non-Hispanic Black	N/A	N/A	N/A
Hispanic	N/A	N/A	N/A
Non-Hispanic Other	N/A	N/A	N/A
<b>Asthma Severity</b>	<b>%</b>	<b>%</b>	<b>%</b>
Intermittent	44.8	48.0	N/A
Mild Persistent	15.2	8.0	N/A
Moderate or Severe Persistent	2.9	2.0	N/A
Unclassified	37.1	42.0	100.0
<b>Asthma Action Plan (AAP)</b>	<b>%</b>	<b>%</b>	<b>%</b>
Has AAP	6.7	18.0	0.0
School District	Greenwich School District	Griswold School District	Groton School District
<b>Asthma Prevalence</b>	<b>% (95% CI)</b>	<b>% (95% CI)</b>	<b>% (95% CI)</b>
Overall	7.1 (5.9 - 8.2)	11.5 (7.9 - 15.1)	12.1 (9.9 - 14.4)
Elementary School	8.5 (6.2 - 10.8)	N/A	6.5 (3.5 - 9.5)
Middle School	5.2 (3.5 - 6.9)	N/A	12.6 (9.0 - 16.2)
High School	7.7 (5.8 - 9.7)	21.3 (14.0 - 28.6)	17.8 (12.9 - 22.8)
Male	8.1 (6.4 - 9.8)	11.1 (6.0 - 16.2)	11.9 (8.8 - 15.0)
Female	6.8 (5.2 - 8.4)	11.8 (6.7 - 17.0)	13.3 (9.8 - 16.8)
Non-Hispanic White	7.3 (5.7 - 8.8)	10.3 (6.5 - 14.1)	11.2 (8.1 - 14.3)
Non-Hispanic Black	N/A	N/A	21.7 (9.8 - 33.7)
Hispanic	7.2 (4.7 - 9.6)	N/A	18.7 (13.0 - 24.3)
Non-Hispanic Other	7.3 (4.0 - 10.6)	N/A	N/A
<b>Asthma Severity</b>	<b>%</b>	<b>%</b>	<b>%</b>
Intermittent	46.5	37.1	35.9
Mild Persistent	26.1	14.3	12.6
Moderate or Severe Persistent	4.9	N/A	1.9
Unclassified	22.5	48.6	49.5
<b>Asthma Action Plan (AAP)</b>	<b>%</b>	<b>%</b>	<b>%</b>
Has AAP	34.9	2.9	4.9
School District	Guilford School District	Hamden School District	Hartford School District
<b>Asthma Prevalence</b>	<b>% (95% CI)</b>	<b>% (95% CI)</b>	<b>% (95% CI)</b>
Overall	11.9 (10.1 - 13.8)	4.1 (2.9 - 5.2)	17.1 (15.9 - 18.2)
Elementary School	11.2 (8.1 - 14.3)	10.6 (6.5 - 14.7)	13.3 (11.6 - 15.0)
Middle School	12.5 (9.5 - 15.5)	2.9 (1.4 - 4.3)	18.5 (16.4 - 20.7)
High School	11.9 (8.2 - 15.5)	N/A	19.9 (17.7 - 22.1)
Male	14.3 (11.5 - 17.1)	4.3 (2.6 - 5.9)	18.4 (16.7 - 20.1)
Female	9.9 (7.4 - 12.5)	4.6 (2.9 - 6.4)	17.0 (15.3 - 18.7)
Non-Hispanic White	10.9 (8.9 - 12.9)	N/A	19.7 (13.9 - 25.4)
Non-Hispanic Black	N/A	4.4 (2.1 - 6.7)	17.3 (14.9 - 19.7)
Hispanic	N/A	5.7 (2.7 - 8.7)	18.0 (16.3 - 19.6)
Non-Hispanic Other	12.2 (5.8 - 18.7)	N/A	16.5 (9.1 - 23.9)
<b>Asthma Severity</b>	<b>%</b>	<b>%</b>	<b>%</b>
Intermittent	40.6	43.9	51.2
Mild Persistent	12.3	13.8	14.6
Moderate or Severe Persistent	1.9	1.6	7.4
Unclassified	45.2	40.7	26.8
<b>Asthma Action Plan (AAP)</b>	<b>%</b>	<b>%</b>	<b>%</b>
Has AAP	14.8	53.7	10.9

<sup>1</sup>N/A = Prevalence estimate not available if: the sample size for the denominator was < 30; the Relative Standard Error (RSE) is > 0.3; or the information was not reported. <sup>2</sup>N/A = Percentage not available if there were less than 20 cases with asthma severity reported. Percentage may not add up to 100% due to rounding. <sup>3</sup>N/A = Percentage not available if there were less than 20 students with asthma reported.

Table 9. School District Profile. Connecticut 2020

School District	Hebron School District	Highville Charter School District	Integrated Day Charter School District
<b>Asthma Prevalence</b>	<b>% (95% CI)</b>	<b>% (95% CI)</b>	<b>% (95% CI)</b>
Overall	10.8 (6.9 - 14.8)	28.6 (19.3 - 37.9)	12.8 (5.4 - 20.2)
Elementary School	12.9 (7.6 - 18.2)	N/A	N/A
Middle School	N/A	22.7 (10.3 - 35.1)	N/A
High School	N/A	N/A	N/A
Male	14.7 (8.8 - 20.7)	36.7 (23.2 - 50.2)	N/A
Female	N/A	16.9 (7.4 - 26.5)	N/A
Non-Hispanic White	11.3 (7.1 - 15.5)	N/A	N/A
Non-Hispanic Black	N/A	N/A	N/A
Hispanic	N/A	N/A	N/A
Non-Hispanic Other	N/A	N/A	N/A
<b>Asthma Severity</b>	<b>%</b>	<b>%</b>	<b>%</b>
Intermittent	29.7	N/A	55.2
Mild Persistent	18.8	N/A	20.7
Moderate or Severe Persistent	4.7	N/A	17.2
Unclassified	46.9	100.0	6.9
<b>Asthma Action Plan (AAP)</b>	<b>%</b>	<b>%</b>	<b>%</b>
Has AAP	25.0	7.2	44.8
School District	Interdistrict School for Arts and Comm District	Jumoke Academy District	Killingly School District
<b>Asthma Prevalence</b>	<b>% (95% CI)</b>	<b>% (95% CI)</b>	<b>% (95% CI)</b>
Overall	23.7 (15.0 - 32.3)	21.9 (15.2 - 28.6)	9.9 (7.3 - 12.6)
Elementary School	N/A	26.8 (16.5 - 37.1)	12.5 (7.5 - 17.5)
Middle School	23.7 (15.0 - 32.3)	17.3 (8.8 - 25.9)	9.3 (4.5 - 14.1)
High School	N/A	N/A	8.2 (4.4 - 12.1)
Male	24.5 (12.4 - 36.5)	20.8 (11.5 - 30.2)	11.9 (7.9 - 15.9)
Female	22.7 (10.3 - 35.1)	25.0 (15.5 - 34.5)	8.4 (5.0 - 11.8)
Non-Hispanic White	N/A	N/A	10.3 (7.3 - 13.4)
Non-Hispanic Black	N/A	18.7 (12.2 - 25.2)	N/A
Hispanic	26.7 (15.5 - 37.9)	N/A	N/A
Non-Hispanic Other	N/A	N/A	N/A
<b>Asthma Severity</b>	<b>%</b>	<b>%</b>	<b>%</b>
Intermittent	45.5	59.1	37.0
Mild Persistent	9.1	12.9	4.6
Moderate or Severe Persistent	4.5	16.1	2.8
Unclassified	40.9	11.8	55.6
<b>Asthma Action Plan (AAP)</b>	<b>%</b>	<b>%</b>	<b>%</b>
Has AAP	4.5	16.1	25.0
School District	Learn	Lebanon School District	Ledyard School District
<b>Asthma Prevalence</b>	<b>% (95% CI)</b>	<b>% (95% CI)</b>	<b>% (95% CI)</b>
Overall	13.1 (10.2 - 15.9)	12.8 (8.1 - 17.4)	9.3 (6.9 - 11.7)
Elementary School	11.1 (8.1 - 14.1)	N/A	6.1 (2.6 - 9.7)
Middle School	N/A	N/A	6.4 (2.7 - 10.1)
High School	21.4 (13.4 - 29.3)	N/A	14.4 (9.6 - 19.1)
Male	13.7 (9.6 - 17.7)	15.8 (8.5 - 23.1)	12.0 (8.1 - 15.8)
Female	13.2 (9.2 - 17.2)	11.3 (5.0 - 17.7)	8.8 (5.3 - 12.3)
Non-Hispanic White	11.6 (7.3 - 15.8)	13.9 (8.6 - 19.1)	9.3 (6.2 - 12.4)
Non-Hispanic Black	N/A	N/A	N/A
Hispanic	18.7 (13.2 - 24.1)	N/A	18.5 (9.0 - 27.9)
Non-Hispanic Other	12.4 (5.8 - 18.9)	N/A	N/A
<b>Asthma Severity</b>	<b>%</b>	<b>%</b>	<b>%</b>
Intermittent	35.8	69.0	33.0
Mild Persistent	8.9	13.8	6.1
Moderate or Severe Persistent	5.3	6.9	3.5
Unclassified	50.0	10.3	57.4
<b>Asthma Action Plan (AAP)</b>	<b>%</b>	<b>%</b>	<b>%</b>
Has AAP	24.7	10.3	9.6

<sup>1</sup>N/A = Prevalence estimate not available if: the sample size for the denominator was < 30; the Relative Standard Error (RSE) is > 0.3; or the information was not reported. <sup>2</sup>N/A = Percentage not available if there were less than 20 cases with asthma severity reported. Percentage may not add up to 100% due to rounding. <sup>3</sup>N/A = Percentage not available if there were less than 20 students with asthma reported.

Table 9. School District Profile. Connecticut 2020

School District	Lisbon School District	Litchfield School District	Madison School District
<b>Asthma Prevalence</b>	<b>% (95% CI)</b>	<b>% (95% CI)</b>	<b>% (95% CI)</b>
Overall	11.9 (5.0 - 18.8)	8.8 (4.7 - 13.0)	7.2 (5.0 - 9.3)
Elementary School	N/A	N/A	12.9 (7.4 - 18.5)
Middle School	N/A	N/A	N/A
High School	N/A	N/A	8.7 (5.0 - 12.5)
Male	N/A	14.3 (6.8 - 21.8)	9.4 (5.9 - 12.8)
Female	N/A	N/A	4.9 (2.3 - 7.5)
Non-Hispanic White	N/A	8.0 (3.8 - 12.1)	10.7 (7.3 - 14.2)
Non-Hispanic Black	N/A	N/A	N/A
Hispanic	N/A	N/A	N/A
Non-Hispanic Other	N/A	N/A	N/A
<b>Asthma Severity</b>	<b>%</b>	<b>%</b>	<b>%</b>
Intermittent	N/A	N/A	38.5
Mild Persistent	N/A	N/A	18.5
Moderate or Severe Persistent	N/A	N/A	6.2
Unclassified	N/A	N/A	36.9
<b>Asthma Action Plan (AAP)</b>	<b>%</b>	<b>%</b>	<b>%</b>
Has AAP	N/A	N/A	20.0
School District	Manchester School District	Mansfield School District	Marlborough School District
<b>Asthma Prevalence</b>	<b>% (95% CI)</b>	<b>% (95% CI)</b>	<b>% (95% CI)</b>
Overall	17.8 (15.7 - 19.9)	12.7 (8.5 - 17.0)	11.3 (6.1 - 16.6)
Elementary School	15.9 (12.5 - 19.3)	15.0 (8.2 - 21.7)	N/A
Middle School	24.4 (20.3 - 28.5)	10.9 (5.5 - 16.2)	N/A
High School	13.0 (9.7 - 16.3)	N/A	N/A
Male	21.3 (18.2 - 24.4)	20.2 (13.0 - 27.4)	14.9 (6.8 - 23.0)
Female	14.0 (11.2 - 16.7)	N/A	N/A
Non-Hispanic White	16.1 (12.4 - 19.9)	14.1 (8.4 - 19.8)	11.0 (5.6 - 16.5)
Non-Hispanic Black	15.1 (10.9 - 19.4)	N/A	N/A
Hispanic	19.2 (15.4 - 23.0)	N/A	N/A
Non-Hispanic Other	12.0 (6.6 - 17.3)	N/A	N/A
<b>Asthma Severity</b>	<b>%</b>	<b>%</b>	<b>%</b>
Intermittent	64.1	57.1	65.0
Mild Persistent	12.1	6.1	12.5
Moderate or Severe Persistent	3.5	2.0	N/A
Unclassified	20.3	34.7	22.5
<b>Asthma Action Plan (AAP)</b>	<b>%</b>	<b>%</b>	<b>%</b>
Has AAP	6.6	2.0	2.5
School District	Meriden School District	Middletown School District	Milford School District
<b>Asthma Prevalence</b>	<b>% (95% CI)</b>	<b>% (95% CI)</b>	<b>% (95% CI)</b>
Overall	21.2 (19.2 - 23.1)	15.3 (12.5 - 18.0)	7.7 (6.2 - 9.2)
Elementary School	18.7 (15.5 - 22.0)	12.2 (8.8 - 15.5)	6.1 (3.6 - 8.6)
Middle School	19.9 (16.6 - 23.2)	N/A	10.0 (7.1 - 12.9)
High School	24.7 (21.2 - 28.3)	19.1 (14.6 - 23.6)	6.8 (4.4 - 9.2)
Male	25.5 (22.6 - 28.4)	17.3 (13.2 - 21.4)	10.5 (8.0 - 13.0)
Female	16.5 (14.0 - 19.1)	16.8 (12.3 - 21.3)	5.5 (3.5 - 7.5)
Non-Hispanic White	16.5 (13.0 - 20.1)	10.4 (6.6 - 14.2)	5.4 (3.9 - 7.0)
Non-Hispanic Black	21.8 (15.6 - 28.0)	22.4 (14.5 - 30.3)	N/A
Hispanic	22.5 (19.9 - 25.2)	32.1 (21.9 - 42.3)	N/A
Non-Hispanic Other	N/A	23.7 (10.2 - 37.2)	N/A
<b>Asthma Severity</b>	<b>%</b>	<b>%</b>	<b>%</b>
Intermittent	47.8	65.7	52.8
Mild Persistent	19.3	9.5	19.7
Moderate or Severe Persistent	4.5	2.5	7.9
Unclassified	28.5	22.4	19.7
<b>Asthma Action Plan (AAP)</b>	<b>%</b>	<b>%</b>	<b>%</b>
Has AAP	3.4	13.9	27.6

<sup>1</sup>N/A = Prevalence estimate not available if: the sample size for the denominator was < 30; the Relative Standard Error (RSE) is > 0.3; or the information was not reported. <sup>2</sup>N/A = Percentage not available if there were less than 20 cases with asthma severity reported. Percentage may not add up to 100% due to rounding. <sup>3</sup>N/A = Percentage not available if there were less than 20 students with asthma reported.

Table 9. School District Profile. Connecticut 2020

School District	Monroe School District	Montville School District	Naugatuck School District
<b>Asthma Prevalence</b>	<b>% (95% CI)</b>	<b>% (95% CI)</b>	<b>% (95% CI)</b>
Overall	11.9 (9.4 - 14.3)	8.9 (6.1 - 11.7)	14.0 (11.8 - 16.3)
Elementary School	10.2 (5.9 - 14.6)	N/A	9.0 (5.5 - 12.5)
Middle School	10.4 (6.7 - 14.1)	N/A	15.8 (12.0 - 19.6)
High School	14.8 (10.3 - 19.3)	17.7 (10.7 - 24.7)	16.1 (12.0 - 20.2)
Male	13.8 (10.0 - 17.5)	12.1 (7.3 - 17.0)	16.7 (13.3 - 20.0)
Female	10.9 (7.6 - 14.2)	7.5 (3.7 - 11.3)	12.0 (8.9 - 15.2)
Non-Hispanic White	9.9 (7.3 - 12.5)	6.8 (3.5 - 10.1)	10.8 (7.9 - 13.8)
Non-Hispanic Black	N/A	N/A	14.4 (7.2 - 21.7)
Hispanic	N/A	N/A	17.7 (13.1 - 22.3)
Non-Hispanic Other	N/A	N/A	13.8 (6.2 - 21.3)
<b>Asthma Severity</b>	<b>%</b>	<b>%</b>	<b>%</b>
Intermittent	32.1	30.6	48.4
Mild Persistent	16.7	11.1	21.1
Moderate or Severe Persistent	15.5	N/A	7.8
Unclassified	35.7	58.3	22.7
<b>Asthma Action Plan (AAP)</b>	<b>%</b>	<b>%</b>	<b>%</b>
Has AAP	21.4	25.0	35.2
School District	New Beginnings Inc Family Academy District	New Britain School District	New Canaan School District
<b>Asthma Prevalence</b>	<b>% (95% CI)</b>	<b>% (95% CI)</b>	<b>% (95% CI)</b>
Overall	15.5 (8.3 - 22.7)	19.7 (18.1 - 21.3)	5.9 (4.4 - 7.4)
Elementary School	16.9 (7.4 - 26.5)	20.5 (17.5 - 23.5)	6.8 (3.8 - 9.9)
Middle School	N/A	26.8 (23.6 - 30.0)	5.2 (2.9 - 7.5)
High School	N/A	12.9 (10.6 - 15.1)	5.8 (3.3 - 8.3)
Male	30.8 (16.3 - 45.3)	20.8 (18.5 - 23.1)	7.7 (5.3 - 10.1)
Female	N/A	18.6 (16.3 - 20.9)	3.9 (2.2 - 5.7)
Non-Hispanic White	N/A	16.5 (12.5 - 20.4)	4.3 (2.9 - 5.7)
Non-Hispanic Black	N/A	17.2 (12.0 - 22.3)	N/A
Hispanic	N/A	21.3 (19.2 - 23.3)	N/A
Non-Hispanic Other	N/A	14.5 (8.0 - 21.1)	N/A
<b>Asthma Severity</b>	<b>%</b>	<b>%</b>	<b>%</b>
Intermittent	92.2	64.8	70.5
Mild Persistent	5.9	19.0	7.7
Moderate or Severe Persistent	N/A	6.7	N/A
Unclassified	2.0	9.5	21.8
<b>Asthma Action Plan (AAP)</b>	<b>%</b>	<b>%</b>	<b>%</b>
Has AAP	5.9	9.9	11.5
School District	New Fairfield School District	New Haven School District	New London School District
<b>Asthma Prevalence</b>	<b>% (95% CI)</b>	<b>% (95% CI)</b>	<b>% (95% CI)</b>
Overall	8.7 (6.1 - 11.3)	14.3 (13.2 - 15.4)	19.0 (15.8 - 22.1)
Elementary School	N/A	10.7 (8.9 - 12.5)	12.1 (6.7 - 17.6)
Middle School	8.9 (4.8 - 13.1)	15.0 (13.1 - 16.8)	16.3 (11.3 - 21.3)
High School	10.0 (5.2 - 14.8)	16.6 (14.7 - 18.6)	25.1 (19.7 - 30.5)
Male	7.8 (4.2 - 11.5)	16.5 (14.9 - 18.2)	22.0 (17.5 - 26.5)
Female	9.4 (5.8 - 13.1)	14.0 (12.4 - 15.5)	15.0 (10.8 - 19.2)
Non-Hispanic White	8.8 (5.9 - 11.7)	17.6 (12.6 - 22.7)	15.4 (6.6 - 24.2)
Non-Hispanic Black	N/A	18.2 (15.8 - 20.7)	31.6 (21.4 - 41.9)
Hispanic	N/A	12.8 (11.2 - 14.4)	19.7 (15.4 - 24.0)
Non-Hispanic Other	N/A	30.8 (18.2 - 43.3)	13.1 (5.9 - 20.3)
<b>Asthma Severity</b>	<b>%</b>	<b>%</b>	<b>%</b>
Intermittent	46.2	38.4	46.5
Mild Persistent	10.3	15.3	8.5
Moderate or Severe Persistent	2.6	5.7	3.9
Unclassified	41.0	40.7	41.1
<b>Asthma Action Plan (AAP)</b>	<b>%</b>	<b>%</b>	<b>%</b>
Has AAP	28.2	37.0	11.6

<sup>1</sup>N/A = Prevalence estimate not available if: the sample size for the denominator was < 30; the Relative Standard Error (RSE) is > 0.3; or the information was not reported. <sup>2</sup>N/A = Percentage not available if there were less than 20 cases with asthma severity reported. Percentage may not add up to 100% due to rounding. <sup>3</sup>N/A = Percentage not available if there were less than 20 students with asthma reported.

Table 9. School District Profile. Connecticut 2020

School District	New Milford School District	Newington School District	Newtown School District
<b>Asthma Prevalence</b>	<b>% (95% CI)</b>	<b>% (95% CI)</b>	<b>% (95% CI)</b>
Overall	6.3 (4.6 - 7.9)	14.6 (12.3 - 16.9)	12.7 (10.5 - 14.9)
Elementary School	N/A	15.4 (11.0 - 19.9)	10.1 (6.4 - 13.9)
Middle School	6.4 (3.5 - 9.4)	17.9 (13.7 - 22.1)	10.3 (6.8 - 13.8)
High School	7.7 (4.8 - 10.7)	10.6 (7.2 - 14.0)	16.7 (12.7 - 20.7)
Male	7.9 (5.2 - 10.6)	14.5 (11.3 - 17.7)	14.8 (11.5 - 18.1)
Female	5.5 (3.2 - 7.7)	15.2 (11.8 - 18.5)	10.6 (7.7 - 13.4)
Non-Hispanic White	4.9 (3.0 - 6.8)	9.5 (6.9 - 12.1)	12.2 (9.9 - 14.6)
Non-Hispanic Black	N/A	25.0 (11.6 - 38.4)	N/A
Hispanic	11.8 (6.0 - 17.6)	15.7 (10.7 - 20.8)	N/A
Non-Hispanic Other	N/A	12.5 (6.4 - 18.6)	N/A
<b>Asthma Severity</b>	<b>%</b>	<b>%</b>	<b>%</b>
Intermittent	66.1	74.2	51.8
Mild Persistent	16.9	10.6	19.3
Moderate or Severe Persistent	6.8	4.0	3.0
Unclassified	10.2	11.3	25.9
<b>Asthma Action Plan (AAP)</b>	<b>%</b>	<b>%</b>	<b>%</b>
Has AAP	8.5	6.6	12.0
School District	North Branford School District	North Haven School District	North Stonington School District
<b>Asthma Prevalence</b>	<b>% (95% CI)</b>	<b>% (95% CI)</b>	<b>% (95% CI)</b>
Overall	7.9 (5.1 - 10.6)	11.7 (9.3 - 14.1)	15.0 (8.2 - 21.7)
Elementary School	N/A	14.9 (9.9 - 20.0)	N/A
Middle School	13.1 (7.6 - 18.6)	12.3 (8.1 - 16.5)	N/A
High School	N/A	8.8 (5.4 - 12.2)	20.4 (9.6 - 31.1)
Male	10.0 (5.6 - 14.4)	12.9 (9.5 - 16.3)	N/A
Female	5.9 (2.5 - 9.2)	10.3 (7.0 - 13.7)	N/A
Non-Hispanic White	8.3 (5.2 - 11.3)	10.4 (7.8 - 13.0)	12.9 (6.1 - 19.7)
Non-Hispanic Black	N/A	N/A	N/A
Hispanic	N/A	16.1 (7.0 - 25.3)	N/A
Non-Hispanic Other	N/A	N/A	N/A
<b>Asthma Severity</b>	<b>%</b>	<b>%</b>	<b>%</b>
Intermittent	45.2	41.7	N/A
Mild Persistent	6.5	26.2	N/A
Moderate or Severe Persistent	6.5	3.6	N/A
Unclassified	41.9	28.6	N/A
<b>Asthma Action Plan (AAP)</b>	<b>%</b>	<b>%</b>	<b>%</b>
Has AAP	38.7	39.3	N/A
School District	Norwalk School District	Norwich Free Academy District	Norwich School District
<b>Asthma Prevalence</b>	<b>% (95% CI)</b>	<b>% (95% CI)</b>	<b>% (95% CI)</b>
Overall	9.9 (8.8 - 11.0)	19.7 (16.1 - 23.3)	17.6 (14.9 - 20.3)
Elementary School	9.2 (7.2 - 11.1)	N/A	13.8 (10.5 - 17.1)
Middle School	11.3 (9.2 - 13.5)	N/A	21.9 (17.7 - 26.2)
High School	9.4 (7.6 - 11.2)	19.7 (16.1 - 23.3)	N/A
Male	11.6 (9.9 - 13.3)	22.3 (16.7 - 27.9)	21.5 (17.6 - 25.5)
Female	8.8 (7.3 - 10.4)	17.7 (13.1 - 22.3)	16.3 (12.2 - 20.5)
Non-Hispanic White	8.1 (5.9 - 10.3)	18.7 (13.7 - 23.7)	18.7 (12.7 - 24.6)
Non-Hispanic Black	15.7 (11.7 - 19.8)	25.0 (14.0 - 36.0)	23.5 (16.4 - 30.7)
Hispanic	7.4 (6.0 - 8.9)	25.9 (17.7 - 34.2)	20.7 (15.4 - 26.1)
Non-Hispanic Other	N/A	N/A	13.0 (7.1 - 19.0)
<b>Asthma Severity</b>	<b>%</b>	<b>%</b>	<b>%</b>
Intermittent	52.7	N/A	40.7
Mild Persistent	14.5	N/A	14.4
Moderate or Severe Persistent	6.3	N/A	5.4
Unclassified	26.5	100.0	39.5
<b>Asthma Action Plan (AAP)</b>	<b>%</b>	<b>%</b>	<b>%</b>
Has AAP	15.7	0.0	3.6

<sup>1</sup>N/A = Prevalence estimate not available if: the sample size for the denominator was < 30; the Relative Standard Error (RSE) is > 0.3; or the information was not reported. <sup>2</sup>N/A = Percentage not available if there were less than 20 cases with asthma severity reported. Percentage may not add up to 100% due to rounding. <sup>3</sup>N/A = Percentage not available if there were less than 20 students with asthma reported.

Table 9. School District Profile. Connecticut 2020

School District	Odyssey Community School District	Old Saybrook School District	Orange School District
<b>Asthma Prevalence</b>	<b>% (95% CI)</b>	<b>% (95% CI)</b>	<b>% (95% CI)</b>
Overall	N/A	10.4 (6.6 - 14.3)	3.5 (1.8 - 5.1)
Elementary School	N/A	N/A	3.5 (1.5 - 5.5)
Middle School	N/A	12.4 (6.1 - 18.7)	N/A
High School	N/A	N/A	N/A
Male	N/A	10.6 (5.1 - 16.0)	4.8 (2.1 - 7.4)
Female	N/A	10.3 (4.8 - 15.8)	N/A
Non-Hispanic White	N/A	10.1 (5.8 - 14.3)	4.0 (1.9 - 6.1)
Non-Hispanic Black	N/A	N/A	N/A
Hispanic	N/A	N/A	N/A
Non-Hispanic Other	N/A	N/A	N/A
<b>Asthma Severity</b>	<b>%</b>	<b>%</b>	<b>%</b>
Intermittent	69.0	54.8	37.9
Mild Persistent	24.1	9.7	13.8
Moderate or Severe Persistent	6.9	3.2	6.9
Unclassified	N/A	32.3	41.4
<b>Asthma Action Plan (AAP)</b>	<b>%</b>	<b>%</b>	<b>%</b>
Has AAP	24.1	22.6	41.4
School District	Oxford School District	Park City Prep Charter School District	Plainfield School District
<b>Asthma Prevalence</b>	<b>% (95% CI)</b>	<b>% (95% CI)</b>	<b>% (95% CI)</b>
Overall	7.9 (5.5 - 10.2)	15.7 (10.5 - 20.9)	22.0 (18.7 - 25.2)
Elementary School	5.2 (2.3 - 8.0)	12.5 (5.9 - 19.1)	23.1 (18.3 - 27.8)
Middle School	9.2 (4.3 - 14.2)	18.9 (11.1 - 26.8)	24.3 (17.8 - 30.7)
High School	11.0 (5.9 - 16.0)	N/A	16.7 (10.4 - 22.9)
Male	9.4 (5.9 - 12.9)	18.9 (11.1 - 26.8)	23.6 (18.9 - 28.3)
Female	7.6 (4.2 - 11.0)	13.4 (6.6 - 20.2)	21.7 (17.0 - 26.3)
Non-Hispanic White	4.9 (2.1 - 7.8)	N/A	17.4 (14.1 - 20.7)
Non-Hispanic Black	N/A	N/A	N/A
Hispanic	N/A	N/A	N/A
Non-Hispanic Other	N/A	N/A	N/A
<b>Asthma Severity</b>	<b>%</b>	<b>%</b>	<b>%</b>
Intermittent	13.5	49.1	36.9
Mild Persistent	4.1	16.4	9.3
Moderate or Severe Persistent	2.7	5.5	3.6
Unclassified	79.7	29.1	50.2
<b>Asthma Action Plan (AAP)</b>	<b>%</b>	<b>%</b>	<b>%</b>
Has AAP	24.3	54.5	12.2
School District	Plainville School District	Plymouth School District	Pomfret School District
<b>Asthma Prevalence</b>	<b>% (95% CI)</b>	<b>% (95% CI)</b>	<b>% (95% CI)</b>
Overall	16.8 (13.6 - 20.0)	20.7 (16.0 - 25.4)	N/A
Elementary School	21.1 (15.4 - 26.9)	15.0 (7.2 - 22.8)	N/A
Middle School	19.2 (13.2 - 25.1)	26.3 (18.2 - 34.4)	N/A
High School	9.5 (5.1 - 13.9)	18.7 (10.7 - 26.7)	N/A
Male	19.3 (14.8 - 23.8)	22.1 (15.1 - 29.0)	N/A
Female	16.5 (12.0 - 21.0)	19.6 (13.2 - 26.0)	N/A
Non-Hispanic White	15.1 (11.3 - 18.9)	17.9 (13.0 - 22.9)	N/A
Non-Hispanic Black	N/A	N/A	N/A
Hispanic	19.7 (12.6 - 26.7)	N/A	N/A
Non-Hispanic Other	25.0 (11.6 - 38.4)	N/A	N/A
<b>Asthma Severity</b>	<b>%</b>	<b>%</b>	<b>%</b>
Intermittent	63.2	36.1	29.0
Mild Persistent	13.8	19.7	9.7
Moderate or Severe Persistent	5.1	8.2	6.5
Unclassified	18.0	36.1	54.8
<b>Asthma Action Plan (AAP)</b>	<b>%</b>	<b>%</b>	<b>%</b>
Has AAP	26.0	11.5	16.1

<sup>1</sup>N/A = Prevalence estimate not available if: the sample size for the denominator was < 30; the Relative Standard Error (RSE) is > 0.3; or the information was not reported. <sup>2</sup>N/A = Percentage not available if there were less than 20 cases with asthma severity reported. Percentage may not add up to 100% due to rounding. <sup>3</sup>N/A = Percentage not available if there were less than 20 students with asthma reported.



Table 9. School District Profile. Connecticut 2020

School District	Portland School District	Preston School District	Putnam School District
<b>Asthma Prevalence</b>	<b>% (95% CI)</b>	<b>% (95% CI)</b>	<b>% (95% CI)</b>
Overall	17.3 (13.4 - 21.2)	15.5 (7.1 - 23.9)	12.6 (8.2 - 17.1)
Elementary School	N/A	N/A	16.4 (7.5 - 25.3)
Middle School	25.1 (19.2 - 31.1)	N/A	13.2 (5.6 - 20.8)
High School	12.7 (5.3 - 20.0)	N/A	N/A
Male	23.4 (16.8 - 30.0)	N/A	17.2 (10.4 - 24.1)
Female	15.4 (10.1 - 20.6)	N/A	N/A
Non-Hispanic White	15.1 (10.8 - 19.4)	N/A	8.1 (3.9 - 12.3)
Non-Hispanic Black	N/A	N/A	N/A
Hispanic	22.0 (9.3 - 34.6)	N/A	N/A
Non-Hispanic Other	N/A	N/A	N/A
<b>Asthma Severity</b>	<b>%</b>	<b>%</b>	<b>%</b>
Intermittent	59.1	N/A	40.6
Mild Persistent	9.1	N/A	9.4
Moderate or Severe Persistent	4.5	N/A	3.1
Unclassified	27.3	N/A	46.9
<b>Asthma Action Plan (AAP)</b>	<b>%</b>	<b>%</b>	<b>%</b>
Has AAP	12.5	N/A	9.4
School District	Redding School District	Regional School District 01	Regional School District 04
<b>Asthma Prevalence</b>	<b>% (95% CI)</b>	<b>% (95% CI)</b>	<b>% (95% CI)</b>
Overall	N/A	11.0 (7.7 - 14.4)	13.7 (8.0 - 19.4)
Elementary School	N/A	10.2 (5.0 - 15.5)	N/A
Middle School	N/A	9.0 (3.9 - 14.1)	N/A
High School	N/A	14.7 (7.6 - 21.9)	13.7 (8.0 - 19.4)
Male	10.4 (4.3 - 16.5)	16.0 (10.1 - 21.9)	13.7 (5.8 - 21.6)
Female	N/A	14.5 (8.6 - 20.4)	N/A
Non-Hispanic White	N/A	10.5 (6.9 - 14.2)	13.0 (7.2 - 18.7)
Non-Hispanic Black	N/A	N/A	N/A
Hispanic	N/A	28.1 (12.5 - 43.7)	N/A
Non-Hispanic Other	N/A	N/A	N/A
<b>Asthma Severity</b>	<b>%</b>	<b>%</b>	<b>%</b>
Intermittent	N/A	42.9	54.7
Mild Persistent	N/A	7.1	9.4
Moderate or Severe Persistent	N/A	1.2	3.8
Unclassified	N/A	48.8	32.1
<b>Asthma Action Plan (AAP)</b>	<b>%</b>	<b>%</b>	<b>%</b>
Has AAP	N/A	17.9	5.7
School District	Regional School District 05	Regional School District 06	Regional School District 07
<b>Asthma Prevalence</b>	<b>% (95% CI)</b>	<b>% (95% CI)</b>	<b>% (95% CI)</b>
Overall	6.9 (5.0 - 8.8)	9.2 (5.3 - 13.0)	7.9 (4.8 - 11.1)
Elementary School	N/A	N/A	N/A
Middle School	4.8 (2.6 - 7.0)	N/A	N/A
High School	9.1 (6.0 - 12.2)	N/A	8.4 (4.1 - 12.8)
Male	7.2 (4.5 - 10.0)	N/A	N/A
Female	7.3 (4.5 - 10.0)	13.3 (6.8 - 19.8)	8.1 (3.7 - 12.4)
Non-Hispanic White	3.3 (1.7 - 4.9)	9.0 (4.5 - 13.5)	7.6 (4.4 - 10.8)
Non-Hispanic Black	N/A	N/A	N/A
Hispanic	N/A	N/A	N/A
Non-Hispanic Other	N/A	N/A	N/A
<b>Asthma Severity</b>	<b>%</b>	<b>%</b>	<b>%</b>
Intermittent	47.1	53.8	18.2
Mild Persistent	5.9	11.5	N/A
Moderate or Severe Persistent	N/A	7.7	4.5
Unclassified	47.1	26.9	77.3
<b>Asthma Action Plan (AAP)</b>	<b>%</b>	<b>%</b>	<b>%</b>
Has AAP	23.5	23.1	0.0

<sup>1</sup>N/A = Prevalence estimate not available if: the sample size for the denominator was < 30; the Relative Standard Error (RSE) is > 0.3; or the information was not reported. <sup>2</sup>N/A = Percentage not available if there were less than 20 cases with asthma severity reported. Percentage may not add up to 100% due to rounding. <sup>3</sup>N/A = Percentage not available if there were less than 20 students with asthma reported.

Table 9. School District Profile. Connecticut 2020

School District	Regional School District 08	Regional School District 09	Regional School District 10
<b>Asthma Prevalence</b>	<b>% (95% CI)</b>	<b>% (95% CI)</b>	<b>% (95% CI)</b>
Overall	13.4 (10.1 - 16.8)	8.1 (4.4 - 11.7)	8.7 (6.2 - 11.1)
Elementary School	N/A	N/A	12.1 (6.7 - 17.6)
Middle School	15.6 (10.5 - 20.6)	N/A	N/A
High School	11.4 (7.1 - 15.7)	8.1 (4.4 - 11.7)	15.1 (9.5 - 20.7)
Male	12.2 (7.9 - 16.5)	N/A	7.2 (4.1 - 10.3)
Female	15.0 (9.9 - 20.1)	N/A	11.4 (7.4 - 15.4)
Non-Hispanic White	9.4 (6.4 - 12.4)	6.7 (3.1 - 10.4)	18.5 (12.8 - 24.2)
Non-Hispanic Black	N/A	N/A	N/A
Hispanic	N/A	N/A	N/A
Non-Hispanic Other	N/A	N/A	N/A
<b>Asthma Severity</b>	<b>%</b>	<b>%</b>	<b>%</b>
Intermittent	32.7	N/A	34.6
Mild Persistent	21.8	N/A	20.5
Moderate or Severe Persistent	5.5	N/A	16.7
Unclassified	40.0	N/A	28.2
<b>Asthma Action Plan (AAP)</b>	<b>%</b>	<b>%</b>	<b>%</b>
Has AAP	0.0	N/A	15.4
School District	Regional School District 11	Regional School District 12	Regional School District 13
<b>Asthma Prevalence</b>	<b>% (95% CI)</b>	<b>% (95% CI)</b>	<b>% (95% CI)</b>
Overall	17.2 (7.9 - 26.4)	14.5 (9.0 - 19.9)	9.3 (6.0 - 12.6)
Elementary School	N/A	N/A	N/A
Middle School	N/A	N/A	12.5 (5.9 - 19.1)
High School	N/A	17.6 (9.8 - 25.4)	N/A
Male	N/A	18.5 (9.0 - 27.9)	11.6 (6.4 - 16.8)
Female	N/A	12.9 (5.8 - 20.1)	8.0 (3.5 - 12.6)
Non-Hispanic White	N/A	14.4 (8.6 - 20.2)	8.5 (5.1 - 11.8)
Non-Hispanic Black	N/A	N/A	N/A
Hispanic	N/A	N/A	N/A
Non-Hispanic Other	N/A	N/A	N/A
<b>Asthma Severity</b>	<b>%</b>	<b>%</b>	<b>%</b>
Intermittent	N/A	52.2	32.1
Mild Persistent	N/A	17.4	17.9
Moderate or Severe Persistent	N/A	4.3	3.6
Unclassified	N/A	26.1	46.4
<b>Asthma Action Plan (AAP)</b>	<b>%</b>	<b>%</b>	<b>%</b>
Has AAP	N/A	21.7	10.7
School District	Regional School District 14	Regional School District 15	Regional School District 16
<b>Asthma Prevalence</b>	<b>% (95% CI)</b>	<b>% (95% CI)</b>	<b>% (95% CI)</b>
Overall	10.0 (6.8 - 13.2)	6.8 (5.0 - 8.6)	14.5 (11.4 - 17.6)
Elementary School	N/A	8.8 (5.2 - 12.4)	16.7 (10.7 - 22.6)
Middle School	N/A	11.3 (7.4 - 15.2)	12.7 (7.6 - 17.7)
High School	10.8 (6.2 - 15.4)	N/A	14.4 (9.3 - 19.5)
Male	12.0 (7.1 - 16.9)	7.9 (5.3 - 10.5)	16.5 (12.1 - 21.0)
Female	8.4 (4.2 - 12.6)	7.3 (4.5 - 10.1)	13.8 (9.4 - 18.2)
Non-Hispanic White	9.9 (6.5 - 13.3)	5.9 (4.0 - 7.7)	12.4 (9.3 - 15.6)
Non-Hispanic Black	N/A	N/A	N/A
Hispanic	N/A	N/A	N/A
Non-Hispanic Other	N/A	N/A	N/A
<b>Asthma Severity</b>	<b>%</b>	<b>%</b>	<b>%</b>
Intermittent	56.8	47.3	34.9
Mild Persistent	16.2	16.4	19.6
Moderate or Severe Persistent	N/A	7.3	3.3
Unclassified	27.0	29.1	42.1
<b>Asthma Action Plan (AAP)</b>	<b>%</b>	<b>%</b>	<b>%</b>
Has AAP	27.0	28.2	21.1

<sup>1</sup>N/A = Prevalence estimate not available if: the sample size for the denominator was < 30; the Relative Standard Error (RSE) is > 0.3; or the information was not reported. <sup>2</sup>N/A = Percentage not available if there were less than 20 cases with asthma severity reported. Percentage may not add up to 100% due to rounding. <sup>3</sup>N/A = Percentage not available if there were less than 20 students with asthma reported.

Table 9. School District Profile. Connecticut 2020

School District	Regional School District 17	Regional School District 18	Regional School District 19
<b>Asthma Prevalence</b>	<b>% (95% CI)</b>	<b>% (95% CI)</b>	<b>% (95% CI)</b>
Overall	9.7 (7.2 - 12.2)	8.7 (5.8 - 11.6)	11.9 (7.9 - 15.9)
Elementary School	10.3 (6.6 - 14.1)	8.1 (4.1 - 12.2)	N/A
Middle School	N/A	N/A	N/A
High School	11.9 (6.4 - 17.4)	11.7 (5.7 - 17.7)	11.9 (7.9 - 15.9)
Male	12.6 (8.7 - 16.5)	10.4 (6.1 - 14.7)	N/A
Female	8.7 (5.3 - 12.1)	7.5 (3.4 - 11.7)	14.1 (8.5 - 19.7)
Non-Hispanic White	9.6 (7.0 - 12.2)	8.3 (5.3 - 11.3)	11.0 (6.8 - 15.2)
Non-Hispanic Black	N/A	N/A	N/A
Hispanic	N/A	N/A	N/A
Non-Hispanic Other	N/A	N/A	N/A
<b>Asthma Severity</b>	<b>%</b>	<b>%</b>	<b>%</b>
Intermittent	64.5	40.6	50.0
Mild Persistent	13.2	18.8	23.3
Moderate or Severe Persistent	1.7	N/A	3.3
Unclassified	20.7	40.6	23.3
<b>Asthma Action Plan (AAP)</b>	<b>%</b>	<b>%</b>	<b>%</b>
Has AAP	1.7	12.5	13.3
School District	Ridgefield School District	Rocky Hill School District	Seymour School District
<b>Asthma Prevalence</b>	<b>% (95% CI)</b>	<b>% (95% CI)</b>	<b>% (95% CI)</b>
Overall	8.6 (6.9 - 10.3)	9.7 (7.2 - 12.1)	13.6 (10.6 - 16.5)
Elementary School	8.8 (5.7 - 11.8)	7.3 (3.5 - 11.2)	13.1 (8.0 - 18.2)
Middle School	11.6 (8.3 - 14.8)	11.1 (6.8 - 15.3)	13.6 (8.6 - 18.5)
High School	5.4 (3.1 - 7.7)	10.4 (5.9 - 15.0)	14.0 (8.8 - 19.2)
Male	11.4 (8.7 - 14.0)	9.6 (6.2 - 13.0)	17.3 (12.6 - 21.9)
Female	7.6 (5.3 - 10.0)	10.0 (6.5 - 13.6)	12.0 (8.0 - 16.0)
Non-Hispanic White	7.4 (5.7 - 9.2)	11.7 (8.2 - 15.3)	N/A
Non-Hispanic Black	N/A	N/A	N/A
Hispanic	N/A	N/A	N/A
Non-Hispanic Other	N/A	N/A	N/A
<b>Asthma Severity</b>	<b>%</b>	<b>%</b>	<b>%</b>
Intermittent	32.3	51.8	47.2
Mild Persistent	15.8	14.5	19.6
Moderate or Severe Persistent	6.5	1.2	0.9
Unclassified	45.5	32.5	32.2
<b>Asthma Action Plan (AAP)</b>	<b>%</b>	<b>%</b>	<b>%</b>
Has AAP	5.7	20.5	57.5
School District	Shelton School District	Side By Side Charter School District	Simsbury School District
<b>Asthma Prevalence</b>	<b>% (95% CI)</b>	<b>% (95% CI)</b>	<b>% (95% CI)</b>
Overall	11.1 (9.6 - 12.5)	N/A	14.9 (12.6 - 17.1)
Elementary School	15.8 (13.0 - 18.7)	N/A	19.5 (14.6 - 24.5)
Middle School	10.1 (8.0 - 12.3)	N/A	11.1 (8.1 - 14.1)
High School	N/A	N/A	16.5 (12.3 - 20.7)
Male	13.1 (10.9 - 15.4)	N/A	15.6 (12.2 - 18.9)
Female	10.4 (8.3 - 12.5)	N/A	14.8 (11.7 - 17.9)
Non-Hispanic White	10.4 (8.6 - 12.2)	N/A	14.8 (12.2 - 17.4)
Non-Hispanic Black	16.8 (10.1 - 23.5)	N/A	N/A
Hispanic	14.4 (10.6 - 18.2)	N/A	13.8 (6.5 - 21.0)
Non-Hispanic Other	11.7 (5.7 - 17.7)	N/A	14.8 (7.4 - 22.2)
<b>Asthma Severity</b>	<b>%</b>	<b>%</b>	<b>%</b>
Intermittent	74.0	78.3	55.4
Mild Persistent	12.7	13.0	10.3
Moderate or Severe Persistent	2.1	N/A	2.9
Unclassified	11.2	8.7	31.4
<b>Asthma Action Plan (AAP)</b>	<b>%</b>	<b>%</b>	<b>%</b>
Has AAP	23.1	30.4	21.6

<sup>1</sup>N/A = Prevalence estimate not available if: the sample size for the denominator was < 30; the Relative Standard Error (RSE) is > 0.3; or the information was not reported. <sup>2</sup>N/A = Percentage not available if there were less than 20 cases with asthma severity reported. Percentage may not add up to 100% due to rounding. <sup>3</sup>N/A = Percentage not available if there were less than 20 students with asthma reported.

Table 9. School District Profile. Connecticut 2020

School District	Somers School District	South Windsor School District	Southington School District
<b>Asthma Prevalence</b>	<b>% (95% CI)</b>	<b>% (95% CI)</b>	<b>% (95% CI)</b>
Overall	8.8 (5.7 - 12.0)	14.1 (11.9 - 16.3)	12.9 (11.2 - 14.6)
Elementary School	N/A	10.6 (7.1 - 14.1)	8.2 (5.8 - 10.6)
Middle School	N/A	18.0 (14.0 - 22.0)	18.5 (15.0 - 21.9)
High School	9.1 (4.0 - 14.2)	13.1 (9.5 - 16.7)	12.2 (9.4 - 15.0)
Male	9.0 (4.6 - 13.3)	16.3 (13.1 - 19.4)	13.8 (11.4 - 16.3)
Female	8.6 (4.3 - 12.9)	12.4 (9.4 - 15.5)	12.6 (10.2 - 15.0)
Non-Hispanic White	N/A	11.6 (8.1 - 15.1)	11.5 (9.7 - 13.3)
Non-Hispanic Black	N/A	N/A	37.5 (20.7 - 54.3)
Hispanic	N/A	N/A	23.6 (15.5 - 31.7)
Non-Hispanic Other	N/A	7.8 (3.4 - 12.2)	N/A
<b>Asthma Severity</b>	<b>%</b>	<b>%</b>	<b>%</b>
Intermittent	23.9	26.2	58.6
Mild Persistent	2.3	12.1	18.7
Moderate or Severe Persistent	N/A	4.3	3.4
Unclassified	73.9	57.4	19.2
<b>Asthma Action Plan (AAP)</b>	<b>%</b>	<b>%</b>	<b>%</b>
Has AAP	6.8	7.8	6.4
School District	Sprague School District	Stafford School District	Stamford Charter School for Excellence District
<b>Asthma Prevalence</b>	<b>% (95% CI)</b>	<b>% (95% CI)</b>	<b>% (95% CI)</b>
Overall	20.0 (9.9 - 30.1)	16.5 (12.1 - 20.8)	10.2 (4.5 - 15.9)
Elementary School	N/A	N/A	N/A
Middle School	N/A	18.3 (11.4 - 25.3)	N/A
High School	N/A	14.9 (8.4 - 21.5)	N/A
Male	26.3 (12.3 - 40.3)	17.3 (10.7 - 23.9)	N/A
Female	N/A	16.0 (10.1 - 21.9)	N/A
Non-Hispanic White	N/A	15.9 (11.3 - 20.5)	N/A
Non-Hispanic Black	N/A	N/A	N/A
Hispanic	N/A	N/A	N/A
Non-Hispanic Other	N/A	N/A	N/A
<b>Asthma Severity</b>	<b>%</b>	<b>%</b>	<b>%</b>
Intermittent	43.2	43.8	83.3
Mild Persistent	20.5	2.1	N/A
Moderate or Severe Persistent	13.6	2.1	8.3
Unclassified	22.7	52.1	8.3
<b>Asthma Action Plan (AAP)</b>	<b>%</b>	<b>%</b>	<b>%</b>
Has AAP	6.8	6.3	4.2
School District	Stamford School District	Sterling School District	Stonington School District
<b>Asthma Prevalence</b>	<b>% (95% CI)</b>	<b>% (95% CI)</b>	<b>% (95% CI)</b>
Overall	15.0 (13.9 - 16.2)	17.7 (9.3 - 26.1)	10.2 (7.3 - 13.0)
Elementary School	17.0 (14.8 - 19.2)	N/A	8.1 (3.5 - 12.7)
Middle School	14.3 (12.3 - 16.2)	N/A	N/A
High School	14.2 (12.4 - 15.9)	N/A	16.3 (10.5 - 22.2)
Male	15.9 (14.3 - 17.5)	N/A	12.3 (7.8 - 16.7)
Female	14.8 (13.1 - 16.4)	N/A	9.3 (5.2 - 13.4)
Non-Hispanic White	12.9 (10.8 - 15.0)	18.5 (9.0 - 27.9)	10.1 (6.9 - 13.3)
Non-Hispanic Black	19.7 (16.1 - 23.4)	N/A	N/A
Hispanic	13.6 (12.1 - 15.2)	N/A	N/A
Non-Hispanic Other	16.2 (11.9 - 20.5)	N/A	N/A
<b>Asthma Severity</b>	<b>%</b>	<b>%</b>	<b>%</b>
Intermittent	53.5	58.5	41.3
Mild Persistent	10.6	19.5	15.2
Moderate or Severe Persistent	2.6	4.9	N/A
Unclassified	33.3	17.1	43.5
<b>Asthma Action Plan (AAP)</b>	<b>%</b>	<b>%</b>	<b>%</b>
Has AAP	15.1	56.1	8.7

<sup>1</sup>N/A = Prevalence estimate not available if: the sample size for the denominator was < 30; the Relative Standard Error (RSE) is > 0.3; or the information was not reported. <sup>2</sup>N/A = Percentage not available if there were less than 20 cases with asthma severity reported. Percentage may not add up to 100% due to rounding. <sup>3</sup>N/A = Percentage not available if there were less than 20 students with asthma reported.

Table 9. School District Profile. Connecticut 2020

School District	Stratford School District	Suffield School District	The Bridge Academy District
<b>Asthma Prevalence</b>	<b>% (95% CI)</b>	<b>% (95% CI)</b>	<b>% (95% CI)</b>
Overall	3.8 (2.8 - 4.7)	9.1 (6.8 - 11.4)	21.3 (13.0 - 29.6)
Elementary School	6.0 (3.9 - 8.2)	9.6 (6.0 - 13.1)	N/A
Middle School	3.1 (1.9 - 4.3)	N/A	22.4 (10.8 - 34.1)
High School	N/A	10.4 (6.2 - 14.7)	20.0 (8.3 - 31.7)
Male	4.8 (3.3 - 6.3)	8.9 (5.6 - 12.2)	28.0 (15.6 - 40.4)
Female	4.2 (2.7 - 5.8)	9.3 (6.2 - 12.5)	16.7 (7.7 - 25.7)
Non-Hispanic White	5.6 (2.5 - 8.7)	9.3 (6.7 - 11.8)	N/A
Non-Hispanic Black	8.7 (4.9 - 12.4)	N/A	N/A
Hispanic	4.6 (2.7 - 6.5)	N/A	30.0 (17.3 - 42.7)
Non-Hispanic Other	N/A	N/A	N/A
<b>Asthma Severity</b>	<b>%</b>	<b>%</b>	<b>%</b>
Intermittent	61.2	56.4	31.4
Mild Persistent	18.6	10.9	15.7
Moderate or Severe Persistent	5.4	9.1	13.7
Unclassified	14.7	23.6	39.2
<b>Asthma Action Plan (AAP)</b>	<b>%</b>	<b>%</b>	<b>%</b>
Has AAP	48.1	21.8	68.6
School District	The Gilbert School District	The Woodstock Academy District	Thompson School District
<b>Asthma Prevalence</b>	<b>% (95% CI)</b>	<b>% (95% CI)</b>	<b>% (95% CI)</b>
Overall	10.5 (5.8 - 15.2)	15.3 (11.3 - 19.4)	11.3 (6.9 - 15.6)
Elementary School	N/A	N/A	N/A
Middle School	10.8 (4.5 - 17.0)	N/A	12.3 (5.2 - 19.5)
High School	N/A	15.3 (11.3 - 19.4)	24.0 (12.2 - 35.8)
Male	12.0 (5.0 - 19.1)	14.3 (8.6 - 19.9)	14.2 (7.7 - 20.6)
Female	N/A	16.4 (10.6 - 22.3)	N/A
Non-Hispanic White	9.5 (4.2 - 14.8)	16.0 (11.5 - 20.5)	N/A
Non-Hispanic Black	N/A	N/A	N/A
Hispanic	N/A	N/A	N/A
Non-Hispanic Other	N/A	N/A	N/A
<b>Asthma Severity</b>	<b>%</b>	<b>%</b>	<b>%</b>
Intermittent	44.4	23.9	65.6
Mild Persistent	27.8	6.5	3.1
Moderate or Severe Persistent	2.8	N/A	N/A
Unclassified	25.0	69.6	31.3
<b>Asthma Action Plan (AAP)</b>	<b>%</b>	<b>%</b>	<b>%</b>
Has AAP	8.3	0.0	3.1
School District	Tolland School District	Torrington School District	Trumbull School District
<b>Asthma Prevalence</b>	<b>% (95% CI)</b>	<b>% (95% CI)</b>	<b>% (95% CI)</b>
Overall	18.9 (15.5 - 22.4)	10.8 (9.0 - 12.6)	10.2 (8.6 - 11.8)
Elementary School	12.4 (6.9 - 17.9)	13.5 (10.7 - 16.3)	10.0 (7.1 - 12.8)
Middle School	17.4 (11.9 - 22.9)	7.8 (4.9 - 10.6)	12.1 (9.1 - 15.0)
High School	25.4 (19.1 - 31.8)	8.4 (4.7 - 12.1)	8.8 (6.5 - 11.2)
Male	21.2 (16.3 - 26.1)	12.9 (10.2 - 15.6)	10.8 (8.6 - 13.1)
Female	16.4 (11.7 - 21.1)	9.7 (7.1 - 12.2)	9.5 (7.3 - 11.7)
Non-Hispanic White	18.9 (15.2 - 22.6)	8.5 (6.3 - 10.7)	10.0 (8.1 - 11.9)
Non-Hispanic Black	N/A	27.9 (14.5 - 41.3)	14.5 (6.2 - 22.8)
Hispanic	N/A	10.7 (7.6 - 13.8)	12.2 (7.7 - 16.7)
Non-Hispanic Other	N/A	16.0 (8.1 - 24.0)	9.0 (3.9 - 14.1)
<b>Asthma Severity</b>	<b>%</b>	<b>%</b>	<b>%</b>
Intermittent	41.1	36.7	62.5
Mild Persistent	15.8	15.3	15.1
Moderate or Severe Persistent	N/A	5.2	4.7
Unclassified	43.2	42.9	17.7
<b>Asthma Action Plan (AAP)</b>	<b>%</b>	<b>%</b>	<b>%</b>
Has AAP	16.8	11.0	25.0

<sup>1</sup>N/A = Prevalence estimate not available if: the sample size for the denominator was < 30; the Relative Standard Error (RSE) is > 0.3; or the information was not reported. <sup>2</sup>N/A = Percentage not available if there were less than 20 cases with asthma severity reported. Percentage may not add up to 100% due to rounding. <sup>3</sup>N/A = Percentage not available if there were less than 20 students with asthma reported.

Table 9. School District Profile. Connecticut 2020

School District	Vernon School District	Voluntown School District	Wallingford School District
<b>Asthma Prevalence</b>	<b>% (95% CI)</b>	<b>% (95% CI)</b>	<b>% (95% CI)</b>
Overall	20.1 (17.0 - 23.3)	19.6 (8.7 - 30.5)	10.8 (9.0 - 12.6)
Elementary School	9.2 (5.1 - 13.2)	N/A	8.3 (5.3 - 11.4)
Middle School	20.8 (15.3 - 26.2)	N/A	9.3 (6.5 - 12.1)
High School	29.1 (23.2 - 35.1)	N/A	13.9 (10.7 - 17.1)
Male	22.0 (17.3 - 26.8)	N/A	9.0 (6.6 - 11.3)
Female	19.9 (15.5 - 24.4)	N/A	12.5 (9.9 - 15.1)
Non-Hispanic White	21.3 (17.0 - 25.6)	N/A	10.8 (8.7 - 12.9)
Non-Hispanic Black	34.7 (21.4 - 48.0)	N/A	N/A
Hispanic	21.6 (10.3 - 32.9)	N/A	8.5 (4.9 - 12.2)
Non-Hispanic Other	24.1 (14.6 - 33.5)	N/A	N/A
<b>Asthma Severity</b>	<b>%</b>	<b>%</b>	<b>%</b>
Intermittent	85.2	68.0	35.3
Mild Persistent	2.3	8.0	17.4
Moderate or Severe Persistent	1.6	8.0	3.2
Unclassified	10.9	16.0	44.2
<b>Asthma Action Plan (AAP)</b>	<b>%</b>	<b>%</b>	<b>%</b>
Has AAP	11.7	12.0	16.8
School District	Waterbury School District	Waterford School District	Watertown School District
<b>Asthma Prevalence</b>	<b>% (95% CI)</b>	<b>% (95% CI)</b>	<b>% (95% CI)</b>
Overall	18.8 (17.5 - 20.2)	12.4 (9.5 - 15.2)	14.2 (11.3 - 17.1)
Elementary School	14.7 (12.7 - 16.8)	11.3 (6.1 - 16.6)	12.7 (7.6 - 17.8)
Middle School	16.0 (13.8 - 18.1)	14.8 (9.8 - 19.8)	17.0 (11.8 - 22.2)
High School	26.3 (23.6 - 28.9)	10.6 (6.2 - 15.0)	12.6 (8.0 - 17.3)
Male	21.8 (19.9 - 23.8)	12.9 (8.7 - 17.2)	16.7 (12.5 - 21.0)
Female	16.7 (14.9 - 18.5)	13.5 (9.2 - 17.8)	11.4 (7.5 - 15.2)
Non-Hispanic White	16.9 (12.9 - 20.8)	9.9 (7.0 - 12.8)	10.8 (7.9 - 13.6)
Non-Hispanic Black	21.7 (18.7 - 24.7)	N/A	N/A
Hispanic	18.2 (16.5 - 19.9)	25.0 (12.8 - 37.3)	N/A
Non-Hispanic Other	20.0 (12.8 - 27.2)	N/A	N/A
<b>Asthma Severity</b>	<b>%</b>	<b>%</b>	<b>%</b>
Intermittent	62.8	49.3	67.2
Mild Persistent	17.9	11.9	11.5
Moderate or Severe Persistent	7.8	3.0	7.4
Unclassified	11.4	35.8	13.9
<b>Asthma Action Plan (AAP)</b>	<b>%</b>	<b>%</b>	<b>%</b>
Has AAP	26.1	7.5	20.5
School District	West Hartford School District	West Haven School District	Westbrook School District
<b>Asthma Prevalence</b>	<b>% (95% CI)</b>	<b>% (95% CI)</b>	<b>% (95% CI)</b>
Overall	19.0 (17.3 - 20.8)	7.8 (6.5 - 9.0)	12.3 (7.6 - 17.0)
Elementary School	11.8 (9.1 - 14.6)	5.3 (3.8 - 6.8)	N/A
Middle School	18.9 (15.9 - 21.9)	11.6 (8.4 - 14.8)	N/A
High School	24.3 (21.2 - 27.4)	9.3 (6.6 - 12.0)	20.4 (9.6 - 31.1)
Male	22.4 (19.7 - 25.1)	8.0 (6.2 - 9.8)	12.0 (5.3 - 18.6)
Female	16.3 (13.9 - 18.6)	7.5 (5.7 - 9.3)	12.9 (6.3 - 19.4)
Non-Hispanic White	16.1 (14.0 - 18.3)	7.0 (4.6 - 9.3)	13.3 (7.7 - 18.9)
Non-Hispanic Black	35.9 (28.7 - 43.1)	10.3 (6.8 - 13.8)	N/A
Hispanic	25.7 (20.9 - 30.5)	8.8 (6.5 - 11.1)	N/A
Non-Hispanic Other	17.4 (12.0 - 22.8)	N/A	N/A
<b>Asthma Severity</b>	<b>%</b>	<b>%</b>	<b>%</b>
Intermittent	56.0	54.5	50.0
Mild Persistent	9.0	20.4	16.7
Moderate or Severe Persistent	2.6	6.0	N/A
Unclassified	32.5	19.2	33.3
<b>Asthma Action Plan (AAP)</b>	<b>%</b>	<b>%</b>	<b>%</b>
Has AAP	14.9	29.3	85.2

<sup>1</sup>N/A = Prevalence estimate not available if: the sample size for the denominator was < 30; the Relative Standard Error (RSE) is > 0.3; or the information was not reported. <sup>2</sup>N/A = Percentage not available if there were less than 20 cases with asthma severity reported. Percentage may not add up to 100% due to rounding. <sup>3</sup>N/A = Percentage not available if there were less than 20 students with asthma reported.

Table 9. School District Profile. Connecticut 2020

Asthma Prevalence	% (95% CI)	% (95% CI)	% (95% CI)
Overall	6.1 (4.0 - 8.2)	6.2 (4.8 - 7.6)	12.6 (10.6 - 14.5)
Elementary School	N/A	6.0 (3.4 - 8.5)	14.7 (10.4 - 18.9)
Middle School	7.0 (3.2 - 10.8)	6.3 (4.0 - 8.7)	10.1 (7.6 - 12.6)
High School	6.1 (2.8 - 9.4)	6.3 (4.0 - 8.5)	15.5 (11.2 - 19.7)
Male	5.6 (2.7 - 8.5)	7.2 (5.1 - 9.2)	14.1 (11.2 - 17.0)
Female	6.6 (3.5 - 9.8)	5.5 (3.6 - 7.4)	12.6 (9.9 - 15.3)
Non-Hispanic White	5.3 (3.0 - 7.6)	6.3 (4.7 - 7.8)	12.3 (9.9 - 14.7)
Non-Hispanic Black	N/A	N/A	31.6 (16.8 - 46.4)
Hispanic	N/A	N/A	18.6 (13.4 - 23.8)
Non-Hispanic Other	N/A	N/A	15.9 (7.9 - 23.8)
<b>Asthma Severity</b>	<b>%</b>	<b>%</b>	<b>%</b>
Intermittent	26.7	47.4	50.7
Mild Persistent	23.3	17.9	11.9
Moderate or Severe Persistent	6.7	2.1	3.2
Unclassified	43.3	32.6	34.2
<b>Asthma Action Plan (AAP)</b>	<b>%</b>	<b>%</b>	<b>%</b>
Has AAP	0.0	7.4	12.1
<b>School District</b>	<b>Wilton School District</b>	<b>Windham School District</b>	<b>Windsor Locks School District</b>
<b>Asthma Prevalence</b>	<b>% (95% CI)</b>	<b>% (95% CI)</b>	<b>% (95% CI)</b>
Overall	10.1 (8.4 - 11.9)	20.2 (17.2 - 23.3)	15.8 (12.5 - 19.2)
Elementary School	8.9 (6.3 - 11.5)	15.8 (11.2 - 20.3)	16.0 (11.5 - 20.5)
Middle School	11.3 (7.8 - 14.8)	30.5 (25.1 - 35.9)	17.8 (10.9 - 24.7)
High School	10.8 (7.5 - 14.2)	8.1 (3.7 - 12.5)	12.9 (6.1 - 19.7)
Male	10.9 (8.3 - 13.5)	19.8 (15.7 - 24.0)	18.7 (13.7 - 23.7)
Female	10.2 (7.6 - 12.7)	21.5 (16.9 - 26.0)	16.6 (11.6 - 21.5)
Non-Hispanic White	10.6 (8.1 - 13.0)	13.8 (8.5 - 19.0)	15.2 (10.8 - 19.6)
Non-Hispanic Black	N/A	N/A	21.9 (12.4 - 31.4)
Hispanic	N/A	23.1 (19.3 - 26.9)	24.4 (14.8 - 33.9)
Non-Hispanic Other	8.5 (3.9 - 13.1)	N/A	N/A
<b>Asthma Severity</b>	<b>%</b>	<b>%</b>	<b>%</b>
Intermittent	20.0	51.8	39.5
Mild Persistent	13.4	12.4	22.8
Moderate or Severe Persistent	3.4	3.6	11.7
Unclassified	63.1	32.1	25.9
<b>Asthma Action Plan (AAP)</b>	<b>%</b>	<b>%</b>	<b>%</b>
Has AAP	25.6	6.6	6.8
<b>School District</b>	<b>Windsor School District</b>	<b>Wolcott School District</b>	<b>Woodstock School District</b>
<b>Asthma Prevalence</b>	<b>% (95% CI)</b>	<b>% (95% CI)</b>	<b>% (95% CI)</b>
Overall	19.3 (16.5 - 22.2)	7.1 (4.7 - 9.4)	14.4 (9.1 - 19.7)
Elementary School	13.6 (8.9 - 18.3)	N/A	N/A
Middle School	15.2 (10.7 - 19.7)	N/A	18.8 (10.5 - 27.1)
High School	27.4 (22.1 - 32.7)	12.4 (7.6 - 17.3)	N/A
Male	19.1 (15.2 - 23.0)	10.0 (6.0 - 13.9)	15.9 (8.3 - 23.6)
Female	19.5 (15.3 - 23.8)	5.1 (2.2 - 8.0)	12.7 (5.3 - 20.0)
Non-Hispanic White	15.7 (10.3 - 21.1)	6.9 (4.4 - 9.3)	14.4 (8.8 - 19.9)
Non-Hispanic Black	20.5 (15.9 - 25.1)	N/A	N/A
Hispanic	19.4 (13.3 - 25.5)	N/A	N/A
Non-Hispanic Other	15.7 (7.2 - 24.2)	N/A	N/A
<b>Asthma Severity</b>	<b>%</b>	<b>%</b>	<b>%</b>
Intermittent	42.4	100.0	60.0
Mild Persistent	8.6	N/A	16.0
Moderate or Severe Persistent	6.6	N/A	N/A
Unclassified	42.4	N/A	24.0
<b>Asthma Action Plan (AAP)</b>	<b>%</b>	<b>%</b>	<b>%</b>
Has AAP	11.9	100.0	12.0

<sup>1</sup>N/A = Prevalence estimate not available if: the sample size for the denominator was < 30; the Relative Standard Error (RSE) is > 0.3; or the information was not reported. <sup>2</sup>N/A = Percentage not available if there were less than 20 cases with asthma severity reported. Percentage may not add up to 100% due to rounding. <sup>3</sup>N/A = Percentage not available if there were less than 20 students with asthma reported.

School District, School Type, School Name	2020
<b>Achievement First Bridgeport Academy District</b>	<b>X</b>
<i>Public</i>	
Achievement First Bridgeport Academy	x
<b>Achievement First Hartford Academy District</b>	<b>X</b>
<i>Public</i>	
Achievement First Hartford Academy	x
<b>Amistad Academy District</b>	<b>X</b>
<i>Public</i>	
Amistad Academy	x
<b>Andover School District</b>	<b>X</b>
<i>Public</i>	
Andover Elementary School	x
<b>Ansonia School District</b>	<b>X</b>
<i>Public</i>	
Ansonia High School	x
Ansonia Middle School	x
Mead School	x
Prendergast School	x
<i>Private</i>	
Assumption-Ansonia	x
<b>Area Cooperative Educational Services</b>	<b>X</b>
<i>Public</i>	
Thomas Edison Magnet Middle School	x
Wintergreen Interdistrict Magnet School	x
<b>Ashford School District</b>	<b>X</b>
<i>Public</i>	
Ashford School	x

School District, School Type, School Name	2020
<b>Avon School District</b>	<b>X</b>
<i>Public</i>	
Avon High School	x
Avon Middle School	x
Pine Grove School	x
Roaring Brook School	x
Thompson Brook School	x
<i>Private</i>	
Oak Hill School at Farmington Valley Montessori	x
Talcott Mt. Academy of Science Math & Technology	x
<b>Barkhamsted School District</b>	<b>X</b>
<i>Public</i>	
Barkhamsted Elementary School	x
<b>Berlin School District</b>	<b>X</b>
<i>Public</i>	
Berlin High School	x
Catherine M. McGee Middle School	x
Emma Hart Willard School	x
Mary E. Griswold School	x
Richard D. Hubbard School	x
<b>Bethany School District</b>	<b>X</b>
<i>Public</i>	
Bethany Community School	x
<b>Bethel School District</b>	<b>X</b>
<i>Public</i>	
Anna H. Rockwell School	x
Bethel High School	x
Bethel Middle School	x
Frank A. Berry School	x
Ralph M. T. Johnson School	x



School District, School Type, School Name	2020
<b>Private</b>	
St. Mary School-Bethel	x
<b>Bethlehem School District</b>	<b>X</b>
<b>Private</b>	
The Woodhall School	x
<b>Bloomfield School District</b>	<b>X</b>
<b>Public</b>	
Bloomfield High School	x
Carmen Arace Intermediate School	x
Carmen Arace Middle School	x
Global Experience Magnet School	x
Laurel School	x
Metacomet School	x
Wintonbury Early Childhood Magnet School	x
<b>Private</b>	
New England Jewish Academy - Lower School	x
<b>Bolton School District</b>	<b>X</b>
<b>Public</b>	
Bolton Center School	x
Bolton High School	x
<b>Booker T. Washington Academy District</b>	<b>X</b>
<b>Public</b>	
Booker T. Washington Academy	x
<b>Bozrah School District</b>	<b>X</b>
<b>Public</b>	
Fields Memorial School	x
<b>Branford School District</b>	<b>X</b>
<b>Public</b>	

School District, School Type, School Name	2020
Branford High School	x
Francis Walsh Intermediate School	x
John B. Sliney School	x
Mary R. Tisko School	x
Mary T. Murphy School	x
<b>Private</b>	
East Shoreline Catholic Academy	x
<b>Other</b>	
Indian Neck School	x
<b>Brass City Charter School District</b>	
<b>Public</b>	
Brass City Charter School	
<b>Bridgeport School District</b>	
<b>Public</b>	
A.B. Skane Center	x
Aerospace/Hydrospace, Engineering and Physical SciencesMagnet High School	x
Barnum School	x
Bassick High School	x
Beardsley School	x
Biotechnology, Research & Zoological Studies Magnet HighSchool	x
Black Rock School	x
Blackham School	x
Bridgeport Military Academy	x
Bryant School	x
Central High School	x
Cesar Batalla School	x
Classical Studies Academy	x
Columbus School	x

School District, School Type, School Name	2020
Edison School	x
Geraldine Claytor Magnet Academy	x
Geraldine Johnson School	x
Hall School	x
Hallen School	x
High Horizons Magnet School	x
Information Technology & Software Engineering Magnet High School	x
Interdistrict Discovery Magnet School	x
James J. Curiale School	x
Jettie S. Tisdale School	x
John Winthrop School	x
Luis Munoz Marin School	x
Madison School	x
Multicultural Magnet School	x
Park City Magnet School	x
Paul Laurence Dunbar School	x
Read School	x
Roosevelt School	x
Thomas Hooker School	x
Waltersville School	x
Warren Harding High School	x
Wilbur Cross School	x
<b>Private</b>	
Bridgeport International Academy	x
Catholic Academy of Bridgeport: St. Andrew Academy	x
Catholic Academy of Bridgeport: St. Ann Academy	x
Catholic Academy of Bridgeport: St. Augustine Academy	x
Kolbe Cathedral High School	x

School District, School Type, School Name	2020
<b>Other</b>	
Bridgeport Learning Center	x
<b>Bristol School District</b>	<b>X</b>
<b>Public</b>	
Bristol Central High School	x
Bristol Early Childhood Center-BECC	x
Bristol Eastern High School	x
Chippens Hill Middle School	x
Edgewood School	x
Ellen P. Hubbell School	x
Greene-Hills School	x
Ivy Drive School	x
Mountain View School	x
Northeast Middle School	x
South Side School	x
Stafford School	x
West Bristol School	x
<b>Private</b>	
Immanuel Lutheran-Bristol	x
Oak Hill School at Bristol	x
St. Joseph-Bristol	x
St. Matthew	x
St. Paul Catholic High School	x
<b>Other</b>	
Alternative Special Education Program (ASEP)	x
Bristol Preparatory Academy	x
<b>Brookfield School District</b>	<b>X</b>
<b>Public</b>	
Brookfield High School	x
Center Elementary School	x
Huckleberry Hill Elementary School	x

School District, School Type, School Name	2020
Whisconier Middle School	x
<b>Private</b>	
Christian Life Academy	x
<b>Brooklyn School District</b>	<b>X</b>
<b>Public</b>	
Brooklyn Elementary School	x
Brooklyn Middle School	x
<b>Private</b>	
The Learning Clinic	x
<b>Canterbury School District</b>	<b>X</b>
<b>Public</b>	
Canterbury Elementary School	x
Dr. Helen Baldwin Middle School	x
<b>Canton School District</b>	<b>X</b>
<b>Public</b>	
Canton High School	x
Canton Intermediate School	x
Canton Middle School	x
Cherry Brook Primary School	x
<b>Capital Preparatory Harbor School District</b>	<b>X</b>
<b>Public</b>	
Capital Preparatory Harbor School	x
<b>Capitol Region Education Council</b>	<b>X</b>
<b>Public</b>	
Academy of Aerospace and Engineering	x
Academy of Aerospace and Engineering Elementary	x
Academy of Science and Innovation	x
Ana Grace Academy of the Arts Elementary School	

School District, School Type, School Name	2020
Civic Leadership High School	x
Discovery Academy	x
Glastonbury/East Hartford Magnet School	x
Greater Hartford Academy of the Arts High School - Full Day	
Greater Hartford Academy of the Arts Magnet Middle	x
International Magnet School for Global Citizenship	x
Metropolitan Learning Center for Global and International Studies	x
Montessori Magnet School	x
Museum Academy	
Reggio Magnet School of the Arts	
Two Rivers Magnet Middle School	x
University of Hartford Magnet School	x
<b>Other</b>	
John J. Allison Polaris Center	x
<b>Chaplin School District</b>	<b>X</b>
<b>Public</b>	
Chaplin Elementary School	x
<b>Cheshire School District</b>	<b>X</b>
<b>Public</b>	
Chapman School	x
Cheshire High School	x
Darcey School	x
Dodd Middle School	x
Doolittle School	x
Highland School	x
Norton School	x
<b>Private</b>	
Cheshire Academy	x

School District, School Type, School Name	2020
<b>Other</b>	
Humiston Alternative School	x
<b>Chester School District</b>	<b>X</b>
<b>Public</b>	
Chester Elementary School	x
<b>Clinton School District</b>	<b>X</b>
<b>Public</b>	
Jared Eliot School	x
Lewin G. Joel Jr. School	x
The Morgan School	x
<b>Colchester School District</b>	<b>X</b>
<b>Public</b>	
Bacon Academy	x
Colchester Elementary School	x
Jack Jackter Intermediate School	x
William J. Johnston Middle School	x
<b>Colebrook School District</b>	<b>X</b>
<b>Public</b>	
Colebrook Consolidated School	x
<b>Columbia School District</b>	<b>X</b>
<b>Public</b>	
Horace W. Porter School	x
<b>Common Ground High School District</b>	<b>X</b>
<b>Public</b>	
Common Ground High School	x
<b>Connecticut Technical Education and Career System</b>	<b>X</b>
<b>Public</b>	
A. I. Prince Technical High School	x
Bullard-Havens Technical High School	x
E. C. Goodwin Technical High School	x

School District, School Type, School Name	2020
Eli Whitney Technical High School	x
Ella T. Grasso Technical High School	x
Emmett O'Brien Technical High School	x
H. C. Wilcox Technical High School	x
H. H. Ellis Technical High School	x
Henry Abbott Technical High School	x
Howell Cheney Technical High School	x
J. M. Wright Technical High School	x
Norwich Technical High School	x
Oliver Wolcott Technical High School	x
Platt Technical High School	x
Vinal Technical High School	x
W. F. Kaynor Technical High School	x
Windham Technical High School	x
<b>Cooperative Educational Services</b>	<b>X</b>
<b>Public</b>	
Six-Six Magnet School	x
<b>Other</b>	
Developmental Learning Center (DLC)	x
Preschool-Primary Learning Center (PLC)	x
School Readiness	x
Therapeutic Day Program	x
<b>Coventry School District</b>	<b>X</b>
<b>Public</b>	
Capt. Nathan Hale School	x
Coventry Academy	x
Coventry Grammar School	x
Coventry High School	x
George Hersey Robertson School	x
<b>Cromwell School District</b>	<b>X</b>

School District, School Type, School Name	2020
<b>Public</b>	
Cromwell High School	x
Cromwell Middle School	x
Edna C. Stevens School	x
Woodside Intermediate School	x
<b>Private</b>	
Adelbrook-The Learning Center of Cromwell	x
<b>Danbury School District</b>	<b>X</b>
<b>Public</b>	
Broadview Middle School	x
DPS Early Childhood Center	x
Danbury High School	x
Ellsworth Avenue School	x
Great Plain School	x
Hayestown Avenue School	x
King Street Intermediate School	x
King Street Primary School	x
Mill Ridge Primary School	x
Morris Street School	x
Park Avenue School	x
Pembroke School	x
Rogers Park Middle School	x
Shelter Rock School	x
South Street School	x
Stadley Rough School	x
Western CT Academy of International Studies Elementary	
Magnet School	x
Westside Middle School Academy	x
<b>Private</b>	
Hudson Country Montessori	x

School District, School Type, School Name	2020
Immaculate High School	x
Immanuel Lutheran-Danbury	x
Saint Peter Sacred Heart School	x
St. Gregory The Great	x
St. Joseph School-Danbury	x
Wooster School	x
<b>Other</b>	
Alternative Center For Excellence	x
<b>Darien School District</b>	<b>X</b>
<b>Public</b>	
Darien High School	x
Hindley Elementary School	x
Holmes Elementary School	x
Middlesex Middle School	x
Ox Ridge Elementary School	x
Royle Elementary School	x
Tokeneke Elementary School	x
<b>Deep River School District</b>	
<b>Public</b>	
Deep River Elementary School	x
<b>Derby School District</b>	<b>X</b>
<b>Public</b>	
Bradley School	x
Derby High School	x
Derby Middle School	x
Irving School	x
Little Raiders University	x
<b>Private</b>	

School District, School Type, School Name	2020
<i>Other</i>	
St. Mary - St. Michael	x
Alternative Education Program	x
RAISE Academy	x
<b>Durham School District</b>	<b>X</b>
<i>Private</i>	
Rushford Academy	x
<b>East Granby School District</b>	<b>X</b>
<i>Public</i>	
Allgrove School	x
East Granby High School	x
East Granby Middle School	x
R. Dudley Seymour School	x
<b>East Haddam School District</b>	<b>X</b>
<i>Public</i>	
East Haddam Elementary School	x
Nathan Hale-Ray High School	x
Nathan Hale-Ray Middle School	x
<i>Private</i>	
Franklin Academy	x
<b>East Hampton School District</b>	<b>X</b>
<i>Public</i>	
Center School	x
East Hampton High School	x
East Hampton Middle School	x
Memorial School	x
<b>East Hartford School District</b>	<b>X</b>
<i>Public</i>	
Anna E. Norris School	x
Connecticut IB Academy	x

School District, School Type, School Name	2020
Dr. Franklin H. Mayberry School	x
Dr. John A. Langford School	x
Dr. Thomas S. O'Connell School	x
East Hartford High School	x
East Hartford Middle School	x
Governor William Pitkin School	x
Joseph O. Goodwin School	x
Robert J. O'Brien School	x
Silver Lane School	x
Sunset Ridge Middle School	x
<i>Private</i>	
Adelbrook-The Learning Center of East Hartford	x
<i>Other</i>	
Early Childhood Learning Center at Hockanum School	x
Synergy Alternative Program	x
Woodland School	x
<b>East Haven School District</b>	<b>X</b>
<i>Public</i>	
Carbone School/East Haven Academy	x
Deer Run School	x
Dominick H. Ferrara School	x
East Haven High School	x
Grove J. Tuttle School	x
Joseph Melillo Middle School	x
Momauguin School	x
Overbrook Early Learning Center	x
<b>East Lyme School District</b>	<b>X</b>
<i>Public</i>	
East Lyme High School	x
East Lyme Middle School	x

School District, School Type, School Name	2020
Flanders School	x
Lillie B. Haynes School	x
Niantic Center School	x
<b>East Windsor School District</b>	<b>X</b>
<i>Public</i>	
Broad Brook Elementary School	x
East Windsor High School	x
East Windsor Middle School	x
<b>Eastern Connecticut Regional Educational Service Center (EASTCONN)</b>	<b>X</b>
<i>Public</i>	
Arts at the Capitol Theater Magnet School (ACT)	x
LEAP Alternative High School	x
Quinebaug Middle College	x
<i>Other</i>	
EastConn Special Education	x
Regional Transitional Services	x
Woodstock Academy Consortium Classroom	x
<b>Eastford School District</b>	<b>X</b>
<i>Public</i>	
Eastford Elementary School	x
<b>Easton School District</b>	<b>X</b>
<i>Public</i>	
Helen Keller Middle School	x
Samuel Staples Elementary School	x
<i>Private</i>	
Easton Country Day School	x
<b>EdAdvance</b>	<b>X</b>
<i>Other</i>	
Partnership Learning Academy	x

School District, School Type, School Name	2020
Steps	x
<b>Ellington School District</b>	<b>X</b>
<i>Public</i>	
Center School	x
Crystal Lake School	x
Ellington High School	x
Ellington Middle School	x
Windermere School	x
<b>Elm City College Preparatory School District</b>	<b>X</b>
<i>Public</i>	
Elm City College Preparatory School	x
<b>Elm City Montessori School District</b>	<b>X</b>
<i>Public</i>	
Elm City Montessori School	x
<b>Enfield School District</b>	<b>X</b>
<i>Public</i>	
Edgar H. Parkman School	x
Eli Whitney School	x
Enfield High School	x
Enfield Street School	x
Hazardville Memorial School	x
Henry Barnard School	x
John F. Kennedy Middle School	x
Prudence Crandall School	x
<i>Private</i>	
Enfield Montessori School	x
Little Angels Catholic Pre-School	x
St. Bernard School-Enfield	x

School District, School Type, School Name	2020
<b>Other</b>	
EPS PK STEAM Academy	x
Eagle Academy	x
Head Start Program	x
<b>Essex School District</b>	<b>X</b>
<b>Public</b>	
Essex Elementary School	x
<b>Private</b>	
Connecticut Coastal Academy	x
<b>Explorations District</b>	<b>X</b>
<b>Public</b>	
Explorations	x
<b>Fairfield School District</b>	<b>X</b>
<b>Public</b>	
Burr Elementary School	x
Dwight Elementary School	x
Fairfield Ludlowe High School	x
Fairfield Warde High School	x
Fairfield Woods Middle School	x
Holland Hill School	x
Jennings School	x
McKinley School	x
Mill Hill School	x
North Stratfield School	x
Osborn Hill School	x
Riverfield School	x
Roger Ludlowe Middle School	x
Sherman School	x
Stratfield School	x
Tomlinson Middle School	x

School District, School Type, School Name	2020
<b>Private</b>	
Assumption Catholic School	x
Fairfield College-Preparatory	x
Fairfield Country Day School	x
Fusion Academy Fairfield	x
Notre Dame Catholic High School	x
St. Catherine Academy	x
St. Thomas Aquinas Catholic School	x
The Southport School	x
The Unquowa School	x
<b>Other</b>	
Early Childhood Center	x
Early Childhood Center at Stratfield	x
Fairfield School/Community Partnership	x
Walter Fitzgerald Campus	x
<b>Farmington School District</b>	<b>X</b>
<b>Public</b>	
East Farms School	x
Farmington High School	x
Irving A. Robbins Middle School	x
Noah Wallace School	x
Union School	x
West District School	x
West Woods Upper Elementary School	x
<b>Franklin School District</b>	<b>X</b>
<b>Public</b>	
Franklin Elementary School	x
<b>Glastonbury School District</b>	<b>X</b>
<b>Public</b>	
Buttonball Lane School	x



School District, School Type, School Name	2020
Gideon Welles School	x
Glastonbury High School	x
Hebron Avenue School	x
Hopewell School	x
Naubuc School	x
Nayaug Elementary School	x
Smith Middle School	x
<i>Other</i>	
Links Academy	x
PreK-Eastbury	x
<b>Granby School District</b>	<b>X</b>
<i>Public</i>	
Granby Memorial High School	x
Granby Memorial Middle School	x
Kelly Lane Primary School	x
Wells Road Intermediate School	x
<b>Great Oaks Charter School District</b>	<b>X</b>
<i>Public</i>	
Great Oaks Charter School	x
<b>Greenwich School District</b>	<b>X</b>
<i>Public</i>	
Central Middle School	x
Cos Cob School	x
Eastern Middle School	x
Glenville School	x
Greenwich High School	x
Hamilton Avenue School	x
International School At Dundee	x
Julian Curtiss School	x
New Lebanon School	x

School District, School Type, School Name	2020
North Mianus School	x
North Street School	x
Old Greenwich School	x
Parkway School	x
Riverside School	x
Western Middle School	x
<i>Private</i>	
Convent of the Sacred Heart	x
Greenwich Academy	x
Greenwich Catholic	x
<i>Other</i>	
Community Connections	x
Windrose	x
<b>Griswold School District</b>	<b>X</b>
<i>Public</i>	
Griswold Alternative School	x
Griswold Elementary School	x
Griswold High School	x
Griswold Middle School	x
<b>Groton School District</b>	<b>X</b>
<i>Public</i>	
Catherine Kolnaski Magnet School	x
Charles Barnum School	x
Claude Chester School	x
Groton Middle School	x
Mary Morrisson School	x
Northeast Academy Elementary School	x
Robert E. Fitch High School	x
S. B. Butler School	x
<i>Private</i>	
Sacred Heart School-Groton	x

School District, School Type, School Name	2020
<b>Guilford School District</b>	<b>X</b>
<i>Public</i>	
A. Baldwin Middle School	x
A. W. Cox School	x
Calvin Leete School	x
E. C. Adams Middle School	x
Guilford High School	x
Guilford Lakes School	x
Melissa Jones School	x

<b>Haddam School District</b>	<b>X</b>
<i>Private</i>	
Oak Hill School at Haddam-Killingworth High School	x

<b>Hamden School District</b>	<b>X</b>
<i>Public</i>	
Bear Path School	x
Church Street School	x
Dunbar Hill School	
Hamden High School	x
Hamden Middle School	x
Helen Street School	
Ridge Hill School	x
Shepherd Glen School	x
Spring Glen School	x
West Woods School	x
<i>Private</i>	
Cedarhurst School	x
Sacred Heart Academy-Hamden	x
St. Rita School	x

School District, School Type, School Name	2020
The Passage Program at Cedarhurst School (Yale University)	x
<i>Other</i>	
Alice Peck Learning Center	x
<b>Hampton School District</b>	<b>X</b>
<i>Public</i>	
Hampton Elementary School	x
<b>Hartford School District</b>	<b>X</b>
<i>Public</i>	
Betances Learning Lab Magnet School	x
Betances STEM Magnet School	x
Breakthrough Magnet School, North	x
Breakthrough Magnet School, South	x
Bulkeley High School	x
Burns Latino Studies Academy	x
Burr Middle School	x
Capital Preparatory Magnet School	x
Classical Magnet School	x
Dwight-Bellizzi Dual Language Academy	x
Environmental Sciences Magnet at Hooker School	x
Expeditionary Learning Academy at Moylan School	x
Global Communications Academy	x
Great Path Academy at MCC	x
Hartford Magnet Trinity College Academy	x
Hartford PreKindergarten Magnet School	x
Hartford Public High School	x
Kennelly School	x
Kinsella Magnet School of Performing Arts	x
M. D. Fox School	x
M. L. King, Jr. Middle School	x
McDonough Middle School	x

School District, School Type, School Name	2020
Milner Middle School	x
Montessori Magnet at Batchelder School	x
Montessori Magnet at Fisher School	x
Naylor/CCSU Leadership Academy	x
Parkville Community School	x
Pathways Academy of Technology and Design	x
Rawson School	x
Renzulli Gifted and Talented Academy	x
SAND School	x
STEM Magnet at Annie Fisher School	x
Sanchez School	x
Sport and Medical Sciences Academy	x
University High School of Science and Engineering	x
Weaver High School	x
Webster Micro Society Magnet School	x
West Middle School	x
Wish Museum School	x
<b>Private</b>	
Covenant Preparatory School	x
Grace Academy	x
Hartford Adventist Academy	x
Oak Hill School at Hartford Primary	x
Oak Hill School at Hartford Secondary	x
Trinity Academy Hartford	x
Watkinson School	x
<b>Hartland School District</b>	<b>X</b>
<b>Public</b>	
Hartland School	x
<b>Hebron School District</b>	<b>X</b>
<b>Public</b>	

School District, School Type, School Name	2020
Gilead Hill School	x
Hebron Elementary School	x
<b>Private</b>	
Oak Hill School at Hemlocks Center	x
<b>Highville Charter School District</b>	<b>X</b>
<b>Public</b>	
Highville Charter School	x
<b>Integrated Day Charter School District</b>	<b>X</b>
<b>Public</b>	
Integrated Day Charter School	x
<b>Interdistrict School for Arts and Comm District</b>	<b>X</b>
<b>Public</b>	
Interdistrict School For Arts And Communication	x
<b>Jumoke Academy District</b>	<b>X</b>
<b>Public</b>	
Jumoke Academy	x
<b>Kent School District</b>	<b>X</b>
<b>Private</b>	
Kent School	x
South Kent School	x
<b>Killingly School District</b>	<b>X</b>
<b>Public</b>	
Killingly Central School	x
Killingly High School	x
Killingly Intermediate School	x
Killingly Memorial School	x
<b>Private</b>	
St. James School-Danielson	x

School District, School Type, School Name	2020
<b>Learn</b>	<b>X</b>
<i>Public</i>	
Connecticut River Academy at Goodwin University	x
Marine Science Magnet High School	x
Regional Multicultural Magnet School	x
Riverside Magnet School at Goodwin University	x
The Friendship School	x
Three Rivers Middle College Magnet School	x
<i>Other</i>	
LEARN Diagnostic and Wellness Center	x
LEARN Integrated Program at TFS	x
LEARN SAILS Program	x
LEARN Transition Academy	x
Learn High School	x
Learn Intensive Program	x
<b>Lebanon School District</b>	<b>X</b>
<i>Public</i>	
Lebanon Elementary School	x
Lebanon Middle School	x
Lyman Memorial High School	x
<b>Ledyard School District</b>	<b>X</b>
<i>Public</i>	
Gales Ferry School	x
Gallup Hill School	x
Juliet W. Long School	x
Ledyard High School	x
Ledyard Middle School	x
<b>Lisbon School District</b>	<b>X</b>
<i>Public</i>	
Lisbon Central School	x

School District, School Type, School Name	2020
<b>Litchfield School District</b>	<b>X</b>
<i>Public</i>	
Center School	x
Litchfield High School	x
Litchfield Intermediate School	x
Litchfield Middle School	x
<b>Madison School District</b>	<b>X</b>
<i>Public</i>	
Daniel Hand High School	x
Dr. Robert H. Brown Intermediate School	x
J. Milton Jeffrey Elementary School	x
Kathleen H. Ryerson Elementary School	x
Walter C. Polson Middle School	x
<i>Private</i>	
Grove School	x
The Country School	x
<i>Other</i>	
Town Campus Learning Center	x
<b>Manchester School District</b>	<b>X</b>
<i>Public</i>	
Bowers School	x
Buckley School	x
Elisabeth M. Bennet Academy	x
Highland Park School	x
Illing Middle School	x
Keeney School	x
Manchester High School	x
Martin School	x
Verplanck School	x

School District, School Type, School Name	2020
<i>Private</i>	
Waddell School	x
Adelbrook-The Learning Center of Manchester	x
Community Child Guidance Clinic School	x
East Catholic High School	x
Manchester Memorial Hospital Clinical Day School	x
St. Bridget School-Manchester	x
St. James-Manchester	x
The Cornerstone Christian School	x
<i>Other</i>	
Manchester Middle Academy	x
Manchester Regional Academy	x
<b>Mansfield School District</b>	<b>X</b>
<i>Public</i>	
Annie E. Vinton School	x
Dorothy C. Goodwin School	x
Mansfield Middle School	x
Southeast Elementary School	x
<i>Private</i>	
Oak Grove Montessori	x
<b>Marlborough School District</b>	<b>X</b>
<i>Public</i>	
Elmer Thienes-Mary Hall Elementary School	x
<b>Meriden School District</b>	<b>X</b>
<i>Public</i>	
Benjamin Franklin School	x
Casimir Pulaski School	x
Francis T. Maloney High School	x
Hanover School	x
Israel Putnam School	x

School District, School Type, School Name	2020
John Barry School	x
Lincoln Middle School	x
Nathan Hale School	x
Orville H. Platt High School	x
Roger Sherman School	x
Thomas Hooker School	x
Washington Middle School	x
<i>Other</i>	
Venture Academy	x
<b>Middletown School District</b>	<b>X</b>
<i>Public</i>	
Bielefield School	x
Farm Hill School	x
Keigwin Middle School	x
Lawrence School	x
MacDonough School	x
Middletown High School	x
Moody School	x
Snow School	x
Spencer School	x
Wesley School	x
Woodrow Wilson Middle School	x
<i>Private</i>	
Adelbrook Transitional Academy	x
Mercy High School	x
St. John Paul II	x
Xavier High School	x
<b>Milford School District</b>	<b>X</b>
<i>Public</i>	
Calf Pen Meadow School	x

School District, School Type, School Name	2020
East Shore Middle School	x
Harborside Middle School	x
J. F. Kennedy School	x
Jonathan Law High School	x
Joseph A. Foran High School	x
Live Oaks School	x
Mathewson School	x
Meadowside School	x
Orange Avenue School	x
Orchard Hills School	x
Pumpkin Delight School	x
West Shore Middle School	x
<b>Private</b>	
Academy of Our Lady of Mercy, Luralton Hall	x
Charles F. Hayden School at Boys & Girls Village	x
St. Mary School-Milford	x
The Foundation School-Milford	x
Woodhouse Academy	x
<b>Other</b>	
The Academy	x
<b>Monroe School District</b>	<b>X</b>
<b>Public</b>	
Fawn Hollow Elementary School	x
Jockey Hollow School	x
Masuk High School	x
Monroe Elementary School	x
Stepney Elementary School	x
<b>Montville School District</b>	<b>X</b>
<b>Public</b>	
Dr. Charles E. Murphy School	x

School District, School Type, School Name	2020
Leonard J. Tyl Middle School	x
Mohegan School	x
Montville High School	x
Oakdale School	x
<b>Other</b>	
Montville Transition and Vocational Training Academy	x
Palmer Academy	x
Pre School Program	x
<b>Naugatuck School District</b>	<b>X</b>
<b>Public</b>	
Andrew Avenue School	x
City Hill Middle School	x
Cross Street Intermediate School	x
Hillside Intermediate School	x
Hop Brook Elementary School	x
Maple Hill School	x
Naugatuck High School	x
Salem School	x
Western School	x
<b>New Beginnings Inc Family Academy District</b>	<b>X</b>
<b>Public</b>	
New Beginnings Inc Family Academy	x
<b>New Britain School District</b>	<b>X</b>
<b>Public</b>	
Chamberlain Elementary School	x
DiLoreto Elementary & Middle School	x
Gaffney Elementary School	x
Holmes Elementary School	x
House of Arts Letters and Science (HALS) Academy	x
Jefferson Elementary School	x

School District, School Type, School Name	2020
Lincoln Elementary School	x
New Britain High School	x
Northend Elementary School	x
Pulaski Middle School	x
Slade Middle School	x
Smalley Elementary School	x
Smith Elementary School	x
Vance Elementary School	x
<b>Private</b>	
Sacred Heart School-New Britain	x
Solterra Academy	x
<b>Other</b>	
Brookside School	x
New Britain High School Satellite Careers Academy	x
New Britain Transition Center	x
Roosevelt Early Learning Center	x
<b>New Canaan School District</b>	<b>X</b>
<b>Public</b>	
East School	x
New Canaan High School	x
Saxe Middle School	x
South School	x
West School	x
<b>Private</b>	
St. Luke's School	x
<b>New Fairfield School District</b>	<b>X</b>
<b>Public</b>	
Consolidated School	x
Meeting House Hill School	x
New Fairfield High School	x
New Fairfield Middle School	x

School District, School Type, School Name	2020
<b>Other</b>	
Alternative Learning Center	x
<b>New Hartford School District</b>	<b>X</b>
<b>Public</b>	
Ann Antolini School	x
Bakerville Consolidated School	x
New Hartford Elementary School	x
<b>Private</b>	
Oak Hill School at Ann Antolini School	x
<b>New Haven School District</b>	<b>X</b>
<b>Public</b>	
Augusta Lewis Troup School	x
Barack H. Obama Magnet University School	x
Barnard Environmental Magnet School	x
Beecher School	
Benjamin Jepson Magnet School	x
Betsy Ross Arts Magnet School	x
Bishop Woods Architecture and Design Magnet School	x
Brennan Rogers School	x
CelentanoBioTech, Health and Medical Magnet School	x
Clinton Avenue School	x
Columbus Family Academy	x
Conte/West Hills Magnet School	x
Cooperative High School - Inter-District Magnet	x
Davis Academy for Arts & Design Innovation	x
East Rock Community Magnet School	x
Edgewood School	x
Engineering - Science University Magnet School	x
Fair Haven School	x

School District, School Type, School Name	2020
High School In The Community	x
Hill Central Music Academy	x
Hill Regional Career High School	x
James Hillhouse High School	x
John C. Daniels	x
John S. Martinez Sea and Sky STEM School	x
King/Robinson Magnet School	x
Lincoln-Bassett School	x
Mauro-Sheridan Magnet School	x
Metropolitan Business Academy	x
Nathan Hale School	x
New Haven Academy	x
Roberto Clemente Leadership Academy for Global Awareness	x
Ross/Woodward School	x
Sound School	x
Truman School	x
Wexler/Grant Community School	x
Wilbur Cross High School	x
Worthington Hooker School	x
<i>Other</i>	
Riverside Education Academy	x
<b>New London School District</b>	<b>X</b>
<i>Public</i>	
Bennie Dover Jackson Middle School	x
C.B. Jennings International Elementary Magnet	x
Harbor Elementary School	x
Nathan Hale Arts Magnet School	x
New London High School	x
New London Visual and Performing Arts Magnet School	x

School District, School Type, School Name	2020
Science and Technology Magnet School of Southeastern Connecticut	x
Winthrop STEM Elementary Magnet School	x
<i>Private</i>	
Connecticut College Child Development Lab School	x
St. Joseph-New London	x
The Williams School	x
<b>New Milford School District</b>	<b>X</b>
<i>Public</i>	
Hill And Plain School	x
New Milford High School	x
Northville Elementary School	x
Sarah Noble Intermediate School	x
Schaghticoke Middle School	x
<i>Private</i>	
Faith Preparatory School	x
<b>Newington School District</b>	<b>X</b>
<i>Public</i>	
Anna Reynolds School	x
Elizabeth Green School	x
John Paterson School	x
John Wallace Middle School	x
Martin Kellogg Middle School	x
Newington High School	x
Ruth Chaffee School	x
<b>Newtown School District</b>	<b>X</b>
<i>Public</i>	
Hawley Elementary School	x
Head O'Meadow Elementary School	x
Middle Gate Elementary School	x



School District, School Type, School Name	2020
Newtown High School	x
Newtown Middle School	x
Reed Intermediate School	x
Sandy Hook Elementary School	x
<b>Private</b>	
Fraser Woods Montessori School	x
Housatonic Valley Waldorf School	x
St. Rose of Lima	x
<b>Other</b>	
Newtown Community Partnership	x
<b>Niantic School District</b>	<b>X</b>
<b>Private</b>	
The Light House on Main St	x
The Light House on Pennsylvania Ave	x
<b>Norfolk School District</b>	<b>X</b>
<b>Public</b>	
Botelle Elementary School	x
<b>North Branford School District</b>	<b>X</b>
<b>Public</b>	
Jerome Harrison School	x
North Branford High School	x
North Branford Intermediate School	x
Totoket Valley Elementary School	x
<b>North Haven School District</b>	<b>X</b>
<b>Public</b>	
Clintonville Elementary School	x
Green Acres Elementary School	x
Montowese Elementary School	x
North Haven High School	x
North Haven Middle School	x

School District, School Type, School Name	2020
Ridge Road Elementary School	x
<b>North Stonington School District</b>	<b>X</b>
<b>Public</b>	
North Stonington Elementary School	x
Wheeler High School	x
<b>Private</b>	
North Stonington Christian Academy	x
<b>Norwalk School District</b>	<b>X</b>
<b>Public</b>	
Brien McMahon High School	x
Brookside Elementary School	x
Center for Global Studies	x
Columbus Magnet School	x
Cranbury Elementary School	x
Fox Run Elementary School	x
Jefferson Elementary School	x
Kendall Elementary School	x
Marvin Elementary School	x
Naramake Elementary School	x
Nathan Hale Middle School	x
Norwalk Early Childhood Center	x
Norwalk High School	x
P-TECH Norwalk	x
Ponus Ridge Middle School	x
Roton Middle School	x
Rowayton School	x
Silvermine Dual Language Magnet School	x
Tracey Magnet School	x
West Rocks Middle School	x

School District, School Type, School Name	2020
Wolfpit School	x
<b>Private</b>	
All Saints Catholic School	x
<b>Norwich Free Academy District</b>	<b>X</b>
<b>Public</b>	
Norwich Free Academy	x
<b>Other</b>	
Alternative Pathways to Success	x
Night School	x
<b>Norwich School District</b>	<b>X</b>
<b>Public</b>	
Bishop School Early Learning Center	x
John B. Stanton School	x
Kelly STEAM Magnet Middle School	x
Moriarty Magnet School	x
Samuel Huntington School	x
Teachers' Memorial Global Studies Magnet Middle School	x
Thomas W. Mahan School	x
Uncas Elementary School	x
Veterans' Memorial School	x
Wequonnoc Magnet School	x
<b>Odyssey Community School District</b>	<b>X</b>
<b>Public</b>	
Odyssey Community School	x
<b>Old Saybrook School District</b>	<b>X</b>
<b>Public</b>	
Kathleen E. Goodwin School	x
Old Saybrook Middle School	x
Old Saybrook Senior High School	x

School District, School Type, School Name	2020
<b>Private</b>	
St. John Catholic School	x
The Children's Tree Montessori School Inc.	x
<b>Orange School District</b>	<b>X</b>
<b>Public</b>	
Mary L. Tracy School	x
Peck Place School	x
Race Brook School	x
Turkey Hill School	x
<b>Private</b>	
The Foundation School-Orange	x
<b>Oxford School District</b>	<b>X</b>
<b>Public</b>	
Oxford Center School	x
Oxford High School	x
Oxford Middle School	x
Quaker Farms School	x
<b>Park City Prep Charter School District</b>	<b>X</b>
<b>Public</b>	
Park City Prep Charter School	x
<b>Plainfield School District</b>	<b>X</b>
<b>Public</b>	
Moosup Elementary School	x
Plainfield Central School	x
Plainfield High School	x
Plainfield Memorial School	x
Shepard Hill Elementary School	x
<b>Other</b>	
Early Childhood Center	x

School District, School Type, School Name	2020
<b>Plainville School District</b>	<b>X</b>
<i>Public</i>	
Frank T. Wheeler School	x
Linden Street School	x
Louis Toffolon School	x
Middle School of Plainville	x
Plainville High School	x
<i>Private</i>	
Northwest Village School/Wheeler Clinic	x
Oak Hill School at Middle School of Plainville	x
<b>Plymouth School District</b>	<b>X</b>
<i>Public</i>	
Eli Terry Jr. Middle School	x
Harry S. Fisher Elementary School	x
Plymouth Center School	x
Terryville High School	x
<b>Pomfret School District</b>	<b>X</b>
<i>Public</i>	
Pomfret Community School	x
<i>Private</i>	
Pomfret School	x
<b>Portland School District</b>	<b>X</b>
<i>Public</i>	
Brownstone Intermediate School	x
Gildersleeve School	x
Portland High School	x
Portland Middle School	x
Valley View School	x

School District, School Type, School Name	2020
<i>Private</i>	
Oak Hill School at Portland	x
<b>Preston School District</b>	<b>X</b>
<i>Public</i>	
Preston Plains School	x
Preston Veterans' Memorial School	x
<b>Putnam School District</b>	<b>X</b>
<i>Public</i>	
Putnam Elementary School	x
Putnam High School	x
Putnam Middle School	x
<i>Other</i>	
Helping Hands	x
<b>Redding School District</b>	<b>X</b>
<i>Public</i>	
John Read Middle School	x
Redding Elementary School	x
<b>Regional School District 01</b>	<b>X</b>
<i>Public</i>	
Cornwall Consolidated School	x
Housatonic Valley Regional High School	x
Kent Center School	x
Lee H. Kellogg School	x
North Canaan Elementary School	x
Salisbury Central School	x
Sharon Center School	x
<b>Regional School District 04</b>	<b>X</b>
<i>Public</i>	
John Winthrop Middle School	x
Valley Regional High School	x

School District, School Type, School Name	2020
<b>Regional School District 05</b>	<b>X</b>
<i>Public</i>	
Amity Middle School: Bethany	x
Amity Middle School: Orange	x
Amity Regional High School	x
<i>Other</i>	
Amity Transition Academy	x
<b>Regional School District 06</b>	<b>X</b>
<i>Public</i>	
Goshen Center School	x
James Morris School	x
Wamogo Regional High School	x
Warren Elementary School	x
<b>Regional School District 07</b>	<b>X</b>
<i>Public</i>	
Northwestern Regional High School	x
Northwestern Regional Middle School	x
<b>Regional School District 08</b>	<b>X</b>
<i>Public</i>	
RHAM High School	x
RHAM Middle School	x
<b>Regional School District 09</b>	<b>X</b>
<i>Public</i>	
Joel Barlow High School	x
<b>Regional School District 10</b>	<b>X</b>
<i>Public</i>	
Har-Bur Middle School	x
Harwinton Consolidated School	x
Lake Garda Elementary School	x
Lewis S. Mills High School	x

School District, School Type, School Name	2020
<b>Regional School District 11</b>	<b>X</b>
<i>Public</i>	
Parish Hill High School	x
<b>Regional School District 12</b>	<b>X</b>
<i>Public</i>	
Booth Free School	x
Shepaug Valley School	x
The Burnham School	x
Washington Primary School	x
<b>Regional School District 13</b>	<b>X</b>
<i>Public</i>	
Coginchaug Regional High School	x
Frank Ward Strong School	x
Frederick Brewster School	x
John Lyman School	x
Middlefield Memorial School	x
<i>Other</i>	
Middlesex Transition Academy	x
<b>Regional School District 14</b>	<b>X</b>
<i>Public</i>	
Bethlehem Elementary School	x
Mitchell Elementary School	x
Nonnewaug High School	x
Woodbury Middle School	x
<b>Regional School District 15</b>	<b>X</b>
<i>Public</i>	
Gainfield Elementary School	x
Long Meadow Elementary School	x
Memorial Middle School	x
Middlebury Elementary School	x

School District, School Type, School Name	2020
Pomperaug Regional High School	x
Pomperaug School	x
Rochambeau Middle School	x
<b>Regional School District 16</b>	<b>X</b>
<i>Public</i>	
Laurel Ledge School	x
Long River Middle School	x
Prospect Elementary School	x
Woodland Regional High School	x
<b>Regional School District 17</b>	<b>X</b>
<i>Public</i>	
Burr District Elementary School	x
Haddam-Killingworth High School	x
Haddam-Killingworth Intermediate School	x
Haddam-Killingworth Middle School	x
Killingworth Elementary School	x
<i>Other</i>	
RSD17 Transition Program	x
<b>Regional School District 18</b>	<b>X</b>
<i>Public</i>	
Center School	x
Lyme Consolidated School	x
Lyme-Old Lyme High School	x
Lyme-Old Lyme Middle School	x
Mile Creek School	x
<i>Other</i>	
Alternative Program	x
<b>Regional School District 19</b>	<b>X</b>
<i>Public</i>	
E. O. Smith High School	x

School District, School Type, School Name	2020
<b>Ridgefield School District</b>	<b>X</b>
<i>Public</i>	
Barlow Mountain Elementary School	x
Branchville Elementary School	x
East Ridge Middle School	x
Farmingville Elementary School	x
Ridgebury Elementary School	x
Ridgefield High School	x
Scotland Elementary School	x
Scotts Ridge Middle School	x
Veterans Park Elementary School	x
<i>Private</i>	
Ridgefield Academy	x
St. Mary School - Ridgefield	x
<b>Rocky Hill School District</b>	<b>X</b>
<i>Public</i>	
Albert D. Griswold Middle School	x
Moser School	x
Myrtle H. Stevens School	x
Rocky Hill High School	x
West Hill School	x
<b>Salem School District</b>	<b>X</b>
<i>Public</i>	
Salem Elementary School	x
<b>Scotland School District</b>	<b>X</b>
<i>Public</i>	
Scotland Elementary School	x
<b>Seymour School District</b>	<b>X</b>

School District, School Type, School Name	2020
<b>Public</b>	
Bungay School	x
Chatfield-LoPresti School	x
Seymour High School	x
Seymour Middle School	x
<b>Shelton School District</b>	<b>X</b>
<b>Public</b>	
Booth Hill School	x
Elizabeth Shelton School	x
Intermediate School	x
Long Hill School	x
Mohegan School	x
Perry Hill Elementary School	x
Shelton High School	x
Sunnyside School	x
<b>Other</b>	
Alternative Learning Center 1	x
Alternative Learning Center 2	x
Life Skills	x
Pre-Kindergarten	x
Therapeutic Learning Center	x
Transition Program	x
<b>Sherman School District</b>	<b>X</b>
<b>Public</b>	
Sherman School	x
<b>Side By Side Charter School District</b>	<b>X</b>
<b>Public</b>	
Side By Side Charter School	x
<b>Simsbury School District</b>	<b>X</b>
<b>Public</b>	

School District, School Type, School Name	2020
Central School	x
Henry James Memorial School	x
Latimer Lane School	x
Simsbury High School	x
Squadron Line School	x
Tariffville School	x
Tootin' Hills School	x
<b>Private</b>	
St. Mary - Simsbury	x
Westminister School	x
<b>Somers School District</b>	<b>X</b>
<b>Public</b>	
Mabelle B. Avery Middle School	x
Somers Elementary School	x
Somers High School	x
<b>South Windsor School District</b>	<b>X</b>
<b>Public</b>	
Eli Terry School	x
Orchard Hill School	x
Philip R. Smith School	x
Pleasant Valley School	x
South Windsor High School	x
Timothy Edwards School	x
<b>Southington School District</b>	<b>X</b>
<b>Public</b>	
Derynoski Elementary School	x
Flanders Elementary School	x
Hatton Elementary School	x
John F. Kennedy Middle School	x

School District, School Type, School Name	2020
Joseph A. Depaolo Middle School	x
Oshana Elementary School	x
South End Elementary School	x
Southington High School	x
Southington Public Schools Preschool Program	x
Southington Public Schools Preschool Program at Hatton School	x
Strong Elementary School	x
Thalberg Elementary School	x
Urbin T. Kelley School	x
<b>Private</b>	
Southington Catholic School	x
<b>Other</b>	
STELLAR	x
The Karen Smith Academy	x
<b>Sprague School District</b>	<b>X</b>
<b>Public</b>	
Sayles School	x
<b>Private</b>	
St. Joseph School-Baltic	x
<b>Stafford School District</b>	<b>X</b>
<b>Public</b>	
Stafford Elementary School	x
Stafford High School	x
Stafford Middle School	x
Staffordville School	x
West Stafford School	x
<b>Stamford Charter School for Excellence District</b>	<b>X</b>
<b>Public</b>	
Stamford Charter School for Excellence	x

School District, School Type, School Name	2020
<b>Stamford School District</b>	<b>X</b>
<b>Public</b>	
Cloonan School	x
Davenport Ridge School	x
Dolan School	x
Hart School	x
Julia A. Stark School	x
K. T. Murphy School	x
Newfield School	x
Northeast School	x
Rippowam Middle School	x
Rogers International School	x
Roxbury School	x
Scotfield Middle School	x
Springdale School	x
Stamford High School	x
Stillmeadow School	x
Strawberry Hill an ext. of Rogers International	x
The Academy of Information, Technology & Engineering	x
Toquam Magnet School	x
Turn of River School	x
Westhill High School	x
Westover School	x
<b>Private</b>	
Bi-Cultural Hebrew Academy of Connecticut	x
Catholic Academy of Stamford	x
King School, Inc.	x
Mater Salvatoris College Preparatory School	x
Mead School	x
Our Lady of Grace Pre-School	x

School District, School Type, School Name	2020
The Children's School	x
The Long Ridge School	x
Villa Maria Education Center	x
Waterside School	x
<b>Other</b>	
Anchor	x
Apples PreK	x
Individuals Achieving Independence	x
<b>Sterling School District</b>	<b>X</b>
<b>Public</b>	
Sterling Community School	x
<b>Stonington School District</b>	<b>X</b>
<b>Public</b>	
Deans Mill School	x
Stonington High School	x
Stonington Middle School	x
West Vine Street School	x
<b>Private</b>	
Pine Point School	x
St. Michael School	x
<b>Other</b>	
Community Classroom	x
SAILS	x
The Learning Annex	x
<b>Stratford School District</b>	<b>X</b>
<b>Public</b>	
Bunnell High School	x
Chapel School	x
David Wooster Middle School	x
Eli Whitney School	x

School District, School Type, School Name	2020
Franklin School	x
Harry B. Flood Middle School	x
Lordship School	x
Nichols School	x
Second Hill Lane School	x
Stratford Academy - Johnson House	x
Stratford Academy - Victoria Soto School	x
Stratford High School	x
Wilcoxson School	x
<b>Private</b>	
Aspire Living and Learning (ALL) Academy: Stratford	x
St. Mark School	x
<b>Suffield School District</b>	<b>X</b>
<b>Public</b>	
A. Ward Spaulding School	x
McAlister Intermediate School	x
Suffield High School	x
Suffield Middle School	x
<b>The Bridge Academy District</b>	<b>X</b>
<b>Public</b>	
The Bridge Academy	x
<b>The Gilbert School District</b>	<b>X</b>
<b>Public</b>	
The Gilbert School	x
<b>The Woodstock Academy District</b>	<b>X</b>
<b>Public</b>	
The Woodstock Academy	x
<b>Thomaston School District</b>	<b>X</b>
<b>Public</b>	
Black Rock School	x



School District, School Type, School Name	2020
Thomaston Center School	x
Thomaston High School	x
<b>Other</b>	
PATHS	x
<b>Thompson School District</b>	<b>X</b>
<b>Public</b>	
Mary R. Fisher Elementary School	x
Thompson Middle School	x
Tourtellotte Memorial High School	x
<b>Private</b>	
River Run Academy at the Susan Wayne Center of Excellence	x
<b>Tolland School District</b>	<b>X</b>
<b>Public</b>	
Birch Grove Primary School	x
Tolland High School	x
Tolland Intermediate School	x
Tolland Middle School	x
<b>Torrington School District</b>	<b>X</b>
<b>Public</b>	
Forbes School	x
Southwest School	x
Torrington School	x
Torrington High School	x
Torrington Middle School	x
Vogel-Wetmore School	x
<b>Private</b>	
St. John Paul the Great Academy	x
Torrington Christian Academy	x
<b>Trumbull School District</b>	<b>X</b>
<b>Public</b>	

School District, School Type, School Name	2020
Booth Hill School	x
Daniels Farm School	x
Frenchtown Elementary School	x
Hillcrest Middle School	x
Jane Ryan School	x
Madison Middle School	x
Middlebrook School	x
Tashua School	x
Trumbull High School	x
<b>Private</b>	
Christian Heritage School	x
St. Catherine of Siena	x
St. Joseph High School	x
St. Theresa	x
<b>Other</b>	
Trumbull Early Childhood Education Center	x
<b>Uncasville School District</b>	<b>X</b>
<b>Private</b>	
Bradley School-New London Regional	x
St. Bernard High School	x
<b>Union School District</b>	<b>X</b>
<b>Public</b>	
Union School	x
<b>Vernon School District</b>	<b>X</b>
<b>Public</b>	
Center Road School	x
Lake Street School	x
Maple Street School	x
Northeast School	x
Rockville High School	x

School District, School Type, School Name	2020
Skinner Road School	x
Vernon Center Middle School	x
<b>Other</b>	
Elementary Activities Based Learning Program	x
Next Step Program	x
Park Street Learning Center (PSLC)	x
Renaissance Program	x
<b>Voluntown School District</b>	<b>X</b>
<b>Public</b>	
Voluntown Elementary School	x
<b>Wallingford School District</b>	<b>X</b>
<b>Public</b>	
Cook Hill School	x
Dag Hammarskjold Middle School	x
Evarts C. Stevens School	x
Highland School	x
James H. Moran Middle School	x
Lyman Hall High School	x
Mark T. Sheehan High School	x
Mary G. Fritz Elementary School of Yalesville	x
Moses Y. Beach School	x
Parker Farms School	x
Pond Hill School	x
Rock Hill School	x
<b>Private</b>	
High Road Academy - BEST Academy	x
High Road School of Wallingford	x
Holy Trinity School	x
<b>Waterbury School District</b>	<b>X</b>
<b>Public</b>	

School District, School Type, School Name	2020
B. W. Tinker School	x
Bucks Hill School	x
Bunker Hill School	x
Carrington School	x
Crosby High School	x
Driggs School	x
Duggan School	x
F. J. Kingsbury School	x
Gilmartin School	x
H. S. Chase School	x
Hopeville School	x
John F. Kennedy High School	x
Maloney Interdistrict Magnet School	x
Margaret M. Generali Elementary School	x
Michael F. Wallace Middle School	x
North End Middle School	x
Reed School	x
Regan School	x
Rotella Interdistrict Magnet School	x
Sprague School	x
Walsh School	x
Washington School	x
Waterbury Arts Magnet School (High)	x
Waterbury Arts Magnet School (Middle)	x
Waterbury Career Academy	x
Wendell L. Cross School	x
West Side Middle School	x
Wilby High School	x
Woodrow Wilson School	x
<b>Waterford School District</b>	<b>X</b>
<b>Public</b>	

School District, School Type, School Name	2020
Clark Lane Middle School	x
Great Neck Elementary School	x
Oswegatchie Elementary School	x
Quaker Hill Elementary School	x
Waterford High School	x
<b>Watertown School District</b>	<b>X</b>
<i>Public</i>	
Fletcher W. Judson School	x
John Trumbull Primary School	x
Polk School	x
Swift Middle School	x
Watertown High School	x
<i>Private</i>	
St. John the Evangelist	x
St. Mary Magdalen	x
<i>Other</i>	
Watertown Transition Academy	x
<b>West Hartford School District</b>	<b>X</b>
<i>Public</i>	
Aiken School	x
Braeburn School	x
Bristow Middle School	x
Bugbee School	x
Charter Oak International Academy	x
Conard High School	x
Duffy School	x
Hall High School	x
King Philip Middle School	x
Morley School	x
Norfeldt School	x
Sedgwick Middle School	x

School District, School Type, School Name	2020
Smith School	x
Webster Hill School	x
Whiting Lane School	x
Wolcott School	x
<i>Private</i>	
Ben Bronz Academy	x
Intensive Education Academy	x
Kingswood Oxford School	x
Montessori School of Greater Hartford	x
New England Jewish Academy- Upper School	x
Northwest Catholic High School	x
Renbrook School	x
Solomon Schechter Day School of Greater Hartford	x
St. Thomas the Apostle	x
St. Timothy Middle School	x
<b>West Haven School District</b>	<b>X</b>
<i>Public</i>	
Alma E. Pagels School	x
Carrigan 5/6 Intermediate School	x
Edith E. Mackrille School	x
Forest School	x
Harry M. Bailey Middle School	x
Savin Rock Community School	x
Seth G. Haley School	x
Washington School	x
West Haven High School	x
<i>Private</i>	
Notre Dame High School	x
St. Lawrence School-West Haven	x
<b>Westbrook School District</b>	<b>X</b>

School District, School Type, School Name	2020
<b>Public</b>	
Daisy Ingraham School	x
Westbrook High School	x
Westbrook Middle School	x
<b>Weston School District</b>	<b>X</b>
<b>Public</b>	
Hurlbutt Elementary School	x
Weston High School	x
Weston Intermediate School	x
Weston Middle School	x
<b>Westport School District</b>	<b>X</b>
<b>Public</b>	
Bedford Middle School	x
Coleytown Elementary School	x
Coleytown Middle School	x
Green's Farms School	x
King's Highway Elementary School	x
Long Lots School	x
Saugatuck Elementary School	x
Staples High School	x
<b>Other</b>	
Stepping Stones Preschool	x
<b>Wethersfield School District</b>	<b>X</b>
<b>Public</b>	
Alfred W. Hanmer School	x
Charles Wright School	x
Emerson-Williams School	x
Highcrest School	x
Samuel B. Webb Elementary School	x
Silas Deane Middle School	x

School District, School Type, School Name	2020
Wethersfield High School	x
<b>Willington School District</b>	<b>X</b>
<b>Public</b>	
Center School	x
Hall Memorial School	x
<b>Wilton School District</b>	<b>X</b>
<b>Public</b>	
Cider Mill School	x
Middlebrook School	x
Miller-Driscoll School	x
Wilton High School	x
<b>Private</b>	
OUR LADY OF FATIMA CATHOLIC ACADEMY	x
The Montessori School	x
Westport Day School	x
<b>Other</b>	
Community Steps	x
Genesis	x
<b>Winchester School District</b>	<b>X</b>
<b>Public</b>	
Batcheller Early Education Center	x
Pearson School	x
<b>Windham School District</b>	<b>X</b>
<b>Public</b>	
Charles H. Barrows STEM Academy	x
Natchaug School	x
North Windham School	x
W. B. Sweeney School	x
Windham Center School	x

School District, School Type, School Name	2020
Windham High School	x
Windham Middle School	x
<i>Other</i>	
Windham Early Childhood Center	x
<b>Windsor Locks School District</b>	<b>X</b>
<i>Public</i>	
North Street School	x
South Elementary School	x
Windsor Locks High School	x
Windsor Locks Middle School	x
<i>Other</i>	
Pine Meadow Academy	x
RISE Transition Academy	x
<b>Windsor School District</b>	<b>X</b>
<i>Public</i>	
Clover Street School	x

School District, School Type, School Name	2020
John F. Kennedy School	x
Oliver Ellsworth School	x
Poquonock Elementary School	x
Sage Park Middle School	x
Windsor High School	x
<b>Wolcott School District</b>	<b>X</b>
<i>Public</i>	
Alcott School	x
Frisbie School	x
Tyrrell Middle School	x
Wakelee School	x
Wolcott High School	x
<b>Woodbridge School District</b>	<b>X</b>
<i>Public</i>	
Beecher Road School	x
<b>Woodstock School District</b>	<b>X</b>
<i>Public</i>	
Woodstock Elementary School	x
Woodstock Middle School	x