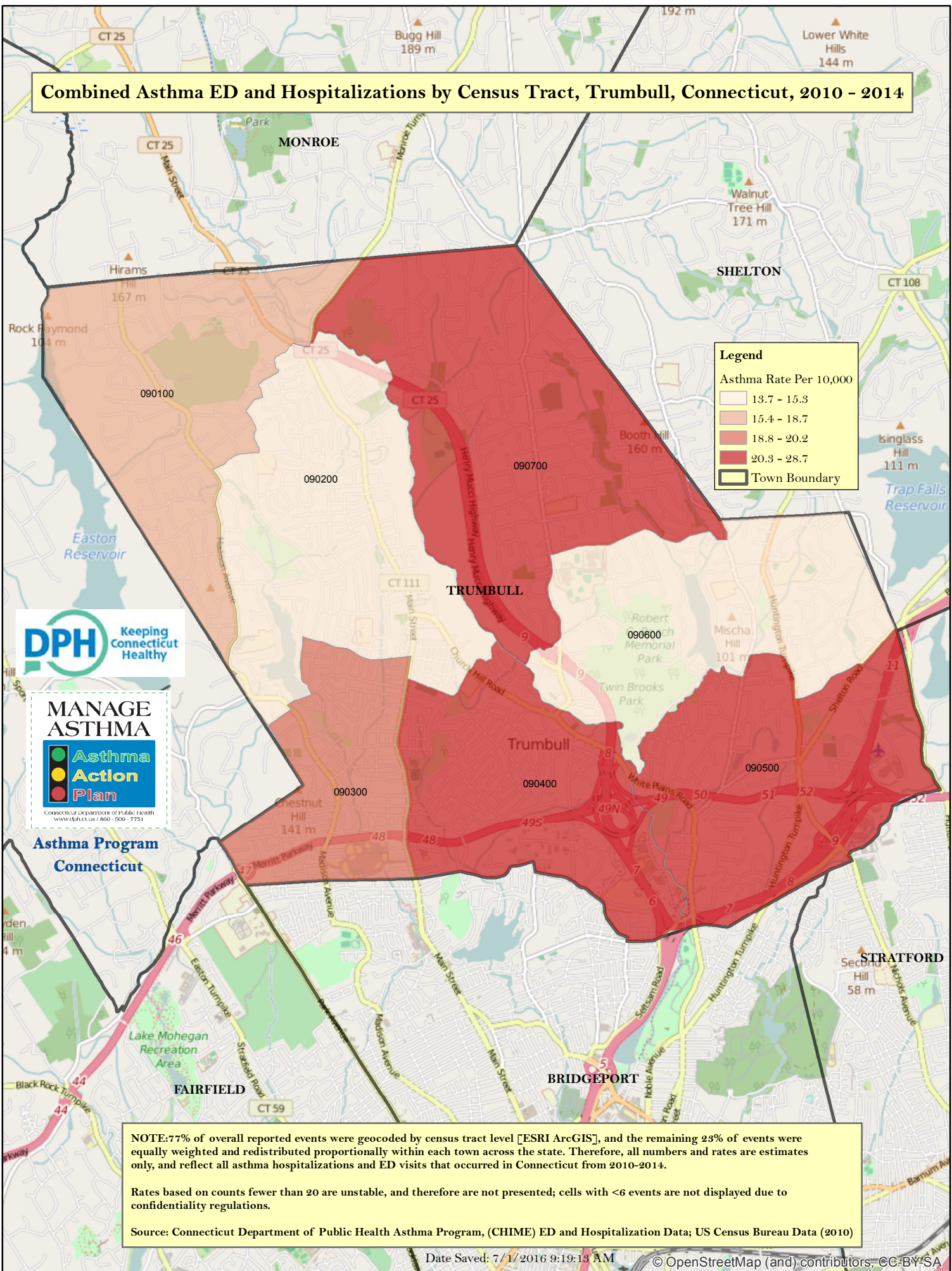


Combined Asthma ED and Hospitalizations by Census Tract, Trumbull, Connecticut, 2010 - 2014



Legend

Asthma Rate Per 10,000

- 13.7 - 15.3
- 15.4 - 18.7
- 18.8 - 20.2
- 20.3 - 28.7

Town Boundary



MANAGE ASTHMA

- Asthma
- Action
- Plan

Connecticut Department of Public Health
www.dph.ct.us / 800-559-7751

Asthma Program Connecticut

NOTE: 77% of overall reported events were geocoded by census tract level [ESRI ArcGIS], and the remaining 23% of events were equally weighted and redistributed proportionally within each town across the state. Therefore, all numbers and rates are estimates only, and reflect all asthma hospitalizations and ED visits that occurred in Connecticut from 2010-2014.

Rates based on counts fewer than 20 are unstable, and therefore are not presented; cells with <6 events are not displayed due to confidentiality regulations.

Source: Connecticut Department of Public Health Asthma Program, (CHIME) ED and Hospitalization Data; US Census Bureau Data (2010)

Combined Asthma ED and Hospitalizations by Census Tract, Trumbull, Connecticut, 2010-2014

Town	Census Tract	No., Total	Rate*, Total	No., Female	Rate*, Female	No., Male	Rate*, Male	No., <=19 Yrs Old	Rate*, <=19 Yrs Old	No., >=20 Yrs Old	Rate*, >=20 Yrs Old
Trumbull	090100	31	18.7	18	.	13	.	14	.	17	.
Trumbull	090200	60	15.3	30	14.3	31	17.0	27	27.2	33	11.3
Trumbull	090300	46	20.2	30	25.9	17	.	24	40.3	22	13.1
Trumbull	090400	94	28.7	50	29.0	44	28.3	35	40.4	59	24.5
Trumbull	090500	60	25.4	32	26.6	28	24.2	38	57.5	22	13.0
Trumbull	090600	24	13.7	12	.	13	.	10	.	14	.
Trumbull	090700	69	24.9	24	17.0	45	33.2	41	48.0	28	14.6

NOTE:77% of overall reported events were geocoded by census tract level [ESRI ArcGIS], and the remaining 23% of events were equally weighted and redistributed proportionally within each town across the state. Therefore, all numbers and rates are estimates only, and reflect all asthma hospitalizations and ED visits that occurred in Connecticut from 2010-2014.

* Rate per 10,000 population

Rates based on counts fewer than 20 are unstable, and therefore are not presented; cells with <6 events are not displayed due to confidentiality regulations.

Source: Connecticut Department of Public Health Asthma Program, (CHIME) ED and Hospitalization Data; US Census Bureau Data (2010)