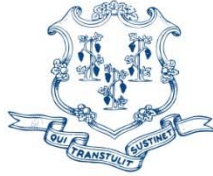


STATE OF CONNECTICUT

DEPARTMENT OF PUBLIC HEALTH



Dannel P. Malloy
Governor
Nancy Wyman
Lt. Governor

Raul Pino, M.D., M.P.H.
Commissioner

EHS Circular Letter 2017-05

TO: Directors of Health
Chief Sanitarians
Regional Lead Treatment Centers

FROM: Christine Hahn, Epidemiologist
Lead, Radon & Healthy Homes Program

DATE: February 22, 2017

SUBJECT: Yamaha Corporation of America Recalls Benches Sold With Grand Pianos Due to Violation of Federal Lead Paint Standard

On February 21, 2017 the United States Consumer Product Safety Commission issued a recall for piano bench model number 3 I PM / PAW which was sold with the Yamaha grand piano GB1K PM / PAW. The paint on the interior compartment of the bench contains an excessive level of lead. Consumers should immediately remove the recalled piano benches from areas with children and contact Yamaha Corporation of America for instructions on returning the piano bench for a free replacement bench.

Piano benches were sold from January 2009 through November 2016, with a manufacturing date code between July 2008 and August 2016. The model number, manufacturing date code and "Yamaha Corporation" are printed on a white label on the interior compartment. Consumers can find a list of piano serial numbers sold with the bench that is being recalled at [Yamaha Bench Recall](#).

Consumers with questions may contact Yamaha Corporation of America toll-free at 844-703-5446. The recall can be found at [US Consumer Product Safety Commission: Yamaha Corporation of American Recalls Benches Sold with Grand Pianos](#). You may also contact the Connecticut Department of Public Health Lead, Radon & Healthy Homes Program at 860-509-7299.

cc: Suzanne Blancaflor, M.P.H., M.S., Chief, Environmental Health Section



Phone: (860) 509-7299 • Fax: (860) 509-7295
410 Capitol Avenue, P.O. Box 340308
Hartford, Connecticut 06134-0308
www.ct.gov/dph

Affirmative Action/Equal Opportunity Employer



Recalled piano bench 3 I PM / PAW sold with Yamaha grand piano model GB1K PM / PAW



Location of model number and date code on recalled piano bench

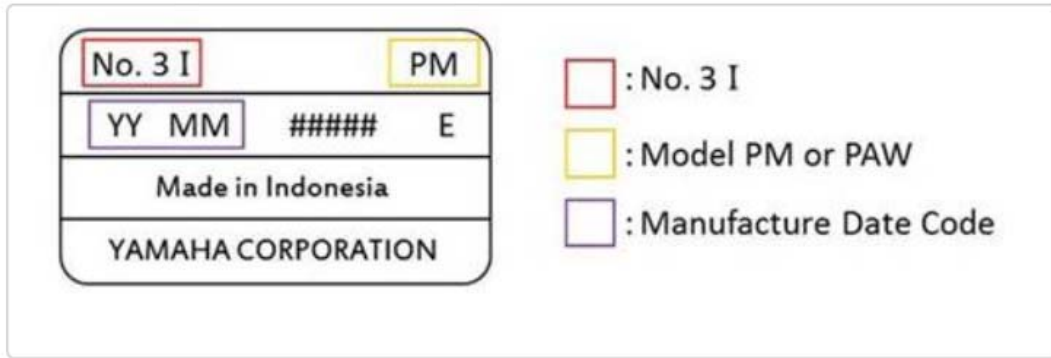


Chart explaining information on piano bench label



Closeup of label on piano bench