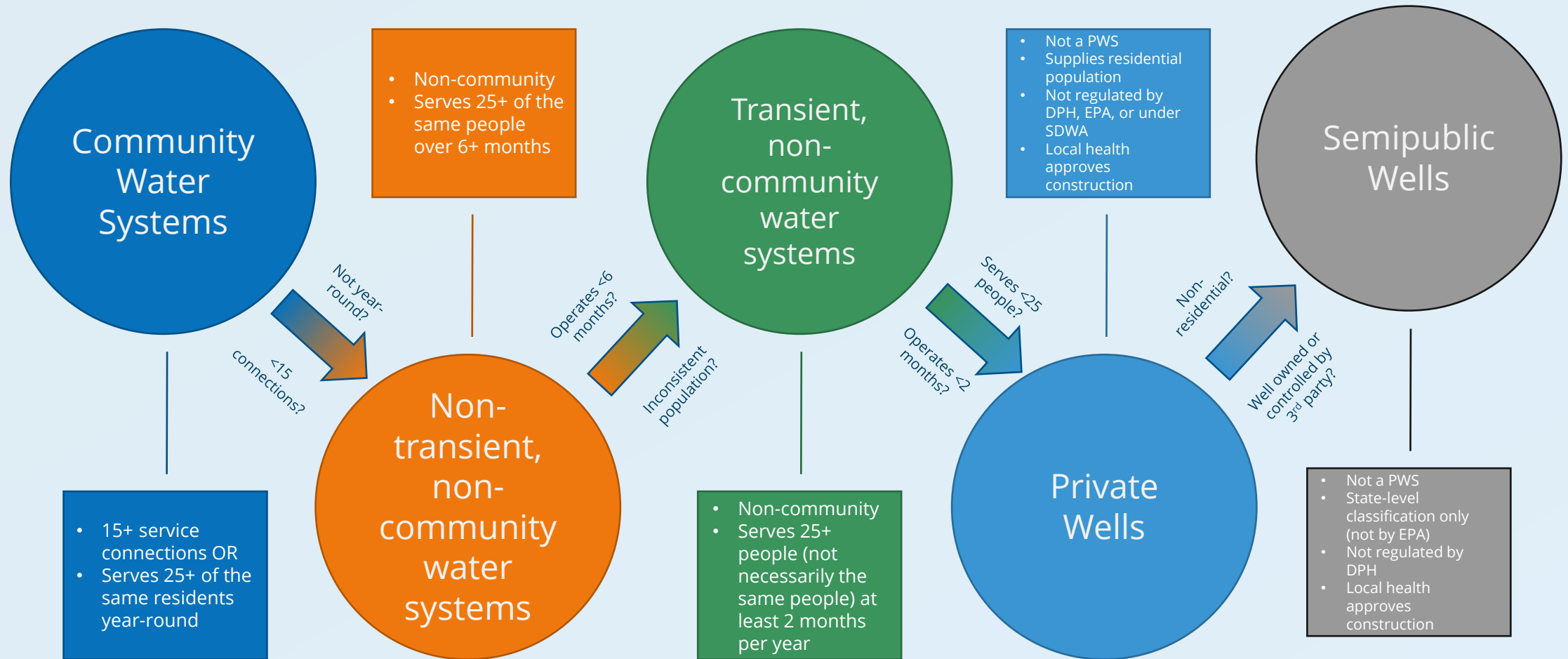


Types of Water Systems in Connecticut

Public Water Systems

- A public water system (PWS) is defined under the Safe Drinking Water Act (SDWA) as:
 - A system for the provision to the public of water for human consumption, which
 - has at least 15 service connections OR
 - serves an average of 25 individuals daily at least 60 days per year
- PWS drinking water quality and quantity is regulated by CT DPH and the EPA.
- Each building serviced by a water system is considered a service connection.

Types of Water Systems



Examples of Public Water Systems

Community Water Systems

- Large, privately-held water systems
- Municipalities
- Mobile home parks
- Sub-divisions



Non-transient, Non-community Water System

- Schools
- Factories
- Office buildings
- Hospitals



Transient, Non-community Water System

- Gas stations
- Campgrounds
- State parks
- Food service establishment



Examples of Non-Public Water Systems

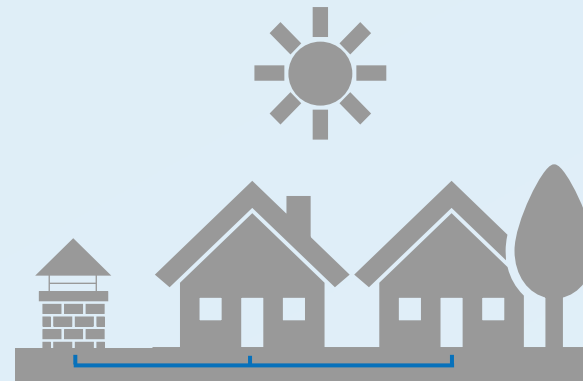
Private Wells

- Residences with standalone wells



Semipublic Wells

- Wells owned by a condo association which serve multiple resident-owned homes but fewer than 25 residents
- Fairgrounds supplied by wells which operate fewer than 60 days per year
- Small businesses with fewer than 25 employees and without public facilities



Overlap Between Types

- All five water system definitions are mutually exclusive.
 - There is no overlap between the three public water system types, as verified by PWS ID and system name/principal city matching.

Relevant Definitions

- **Public water system** means a system for the provision to the public of water for human consumption through pipes or, after August 5, 1998, other constructed conveyances, if such system has at least fifteen service connections or regularly serves an average of at least twenty-five individuals daily at least 60 days out of the year.
- **Community water system** means a public water system which serves at least 15 service connections used by year- round residents or regularly serves at least 25 year-round residents.
- **Non-community water system** means a public water system that is not a community water system. A non-community water system is either a “transient non-community water system (TWS)” or a “non-transient non-community water system (NTNCWS).”
- **Non-transient non-community water system or NTNCWS** means a public water system that is not a community water system and that regularly serves at least 25 of the same persons over 6 months per year.
- **Private well** means a water supply well that meets all of the following criteria: (A) Is not a public well; (B) supplies a residential population of less than twenty-five persons per day; and (C) is owned or controlled through an easement or by the same entity that owns or controls the building or parcel that is served by the water supply well;
- **Semipublic well** means a water supply well that (A) does not meet the definition of a private well or public well, and (B) provides water for drinking and other domestic purposes
- **Transient non-community water system or TWS** means a non-community water system that does not regularly serve at least 25 of the same persons over six months per year.

Explore Connecticut Water Systems

- The following link includes maps of the community public water systems, private well parcels, and other drinking water-related information.
- DPH provides this map for general informational purposes but does not guarantee that it is correct and/or up-to-date.

[Public Water Supply Map](#)

References

MUNICIPAL AQUIFER PROTECTION AGENCY, CT Gen Stat § 22a-354p (2022).

https://www.cga.ct.gov/current/pub/chap_446i.htm#sec_22a-354p

NATIONAL PRIMARY DRINKING WATER REGULATIONS, 40 CFR § 141.2 (2019).

<https://www.govinfo.gov/content/pkg/CFR-2019-title40-vol25/pdf/CFR-2019-title40-vol25-part141.pdf>

“Private Well Testing.” Connecticut Department of Public Health. <https://portal.ct.gov/DPH/Environmental-Health/Private-Well-Water-Program/Private-Well-Testing>

“Private Wells.” Connecticut Department of Public Health. <https://portal.ct.gov/dph/Environmental-Health/Private-Well-Water-Program/Private-Wells>

“Public Water Systems.” 2021. Drinking Water | Healthy Water. Centers for Disease Control and Prevention. March 30, 2021. <https://www.cdc.gov/healthywater/drinking/public/index.html>

REGULATION OF WATER SUPPLY WELLS AND SPRING, CT Gen Stat § 19a-37 (2019).

https://www.cga.ct.gov/current/pub/chap_368a.htm#sec_19a-37

SAFETY OF PUBLIC WATER SYSTEMS, 42 U.S.C. § 300 (2016).

<https://uscode.house.gov/view.xhtml?req=granuleid%3AUSC-prelim-title42-chapter6A-subchapter12&saved=%7CZ3JhbnVsZWlkOlVTQy1wcmVsaW0tdGl0bGU0Mi1zZWNOaW9uMzAwZg%3D%3D%7C%7C%7C0%7Cfalse%7Cprelim&edition=prelim>