



Department of Public Health Safe Drinking Water Act



Public Drinking Water Systems Connecticut

Affordability Roundtable

Legislative Office Building

Lori Mathieu, Public Health Section Chief

DPH Drinking Water Section

December 5, 2018

Presentation

- Department of Public Health -
 - Drinking Water Section
- Public Water Systems
- Public Health Laws –
 - Protection of Drinking Water

Federal Law Primacy Water

- Safe Drinking Water Act – regulates public drinking water
 - CT Department of Public Health
- Clean Water Act – regulates all other uses of water (storm water, sewers, etc.)
 - CT DEEP

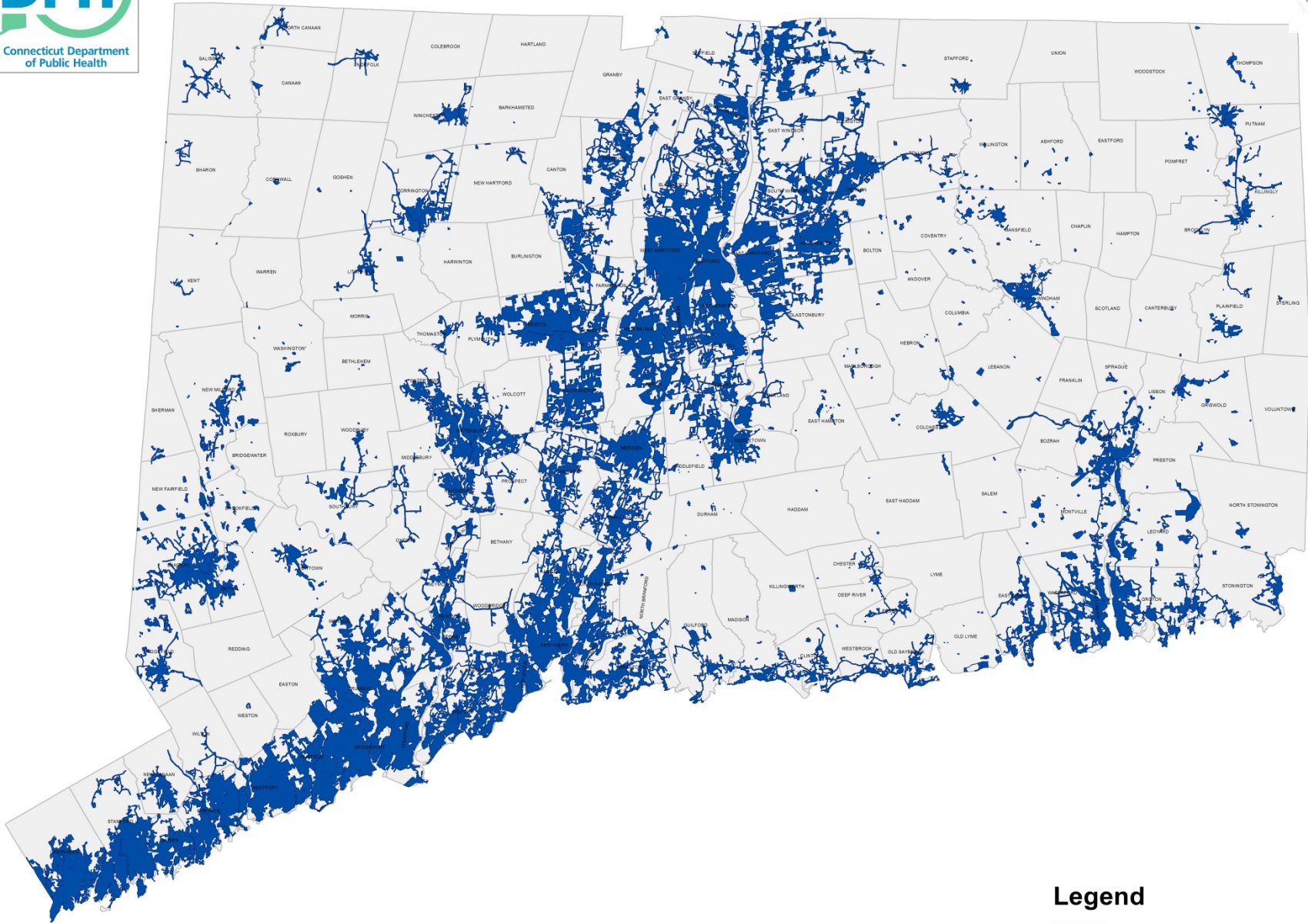
CT DPH Drinking Water Section Responsibilities

- Regulate over 2,550 Public Water Systems with over 4,000 sources (public water system serves 25 or more people)
- 2.9 million CT residents served – 3.5 million total population
- 80 systems serve over 1,000 people
- 460 systems serve under 1,000 people - small community systems, 330
- 2,000 non-community systems

Public Water Systems

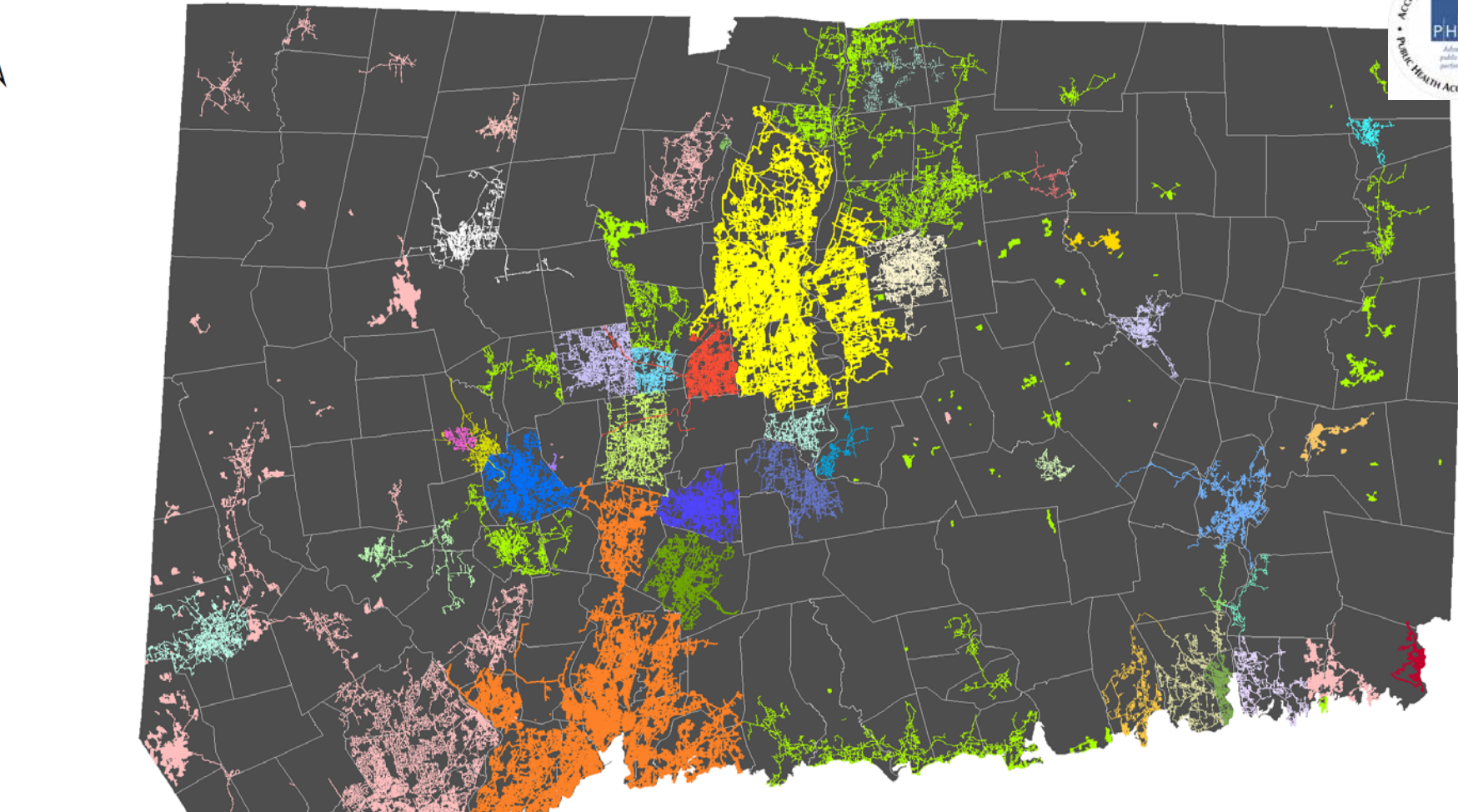
- Public Water Systems (PWS) - Serve 25 or more people
- Community 550, Non-Community Non Transient 600, Non-Community 1,400
- Varying requirements based on type and size
- Approximately 80 PWS serve over 1,000 people
- 28 PWS serve over 10,000 people
- 10 serve over 50,000 people
- 4 serve over 100,000 people
- Required to follow the requirements under the SDWA
 - 17 separate SDWA Rules
- Required to follow numerous state statutory requirements that concern planning, source water protection, etc.

Public Water Supply Service Area



Legend

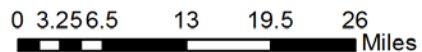
 PWS Service Areas

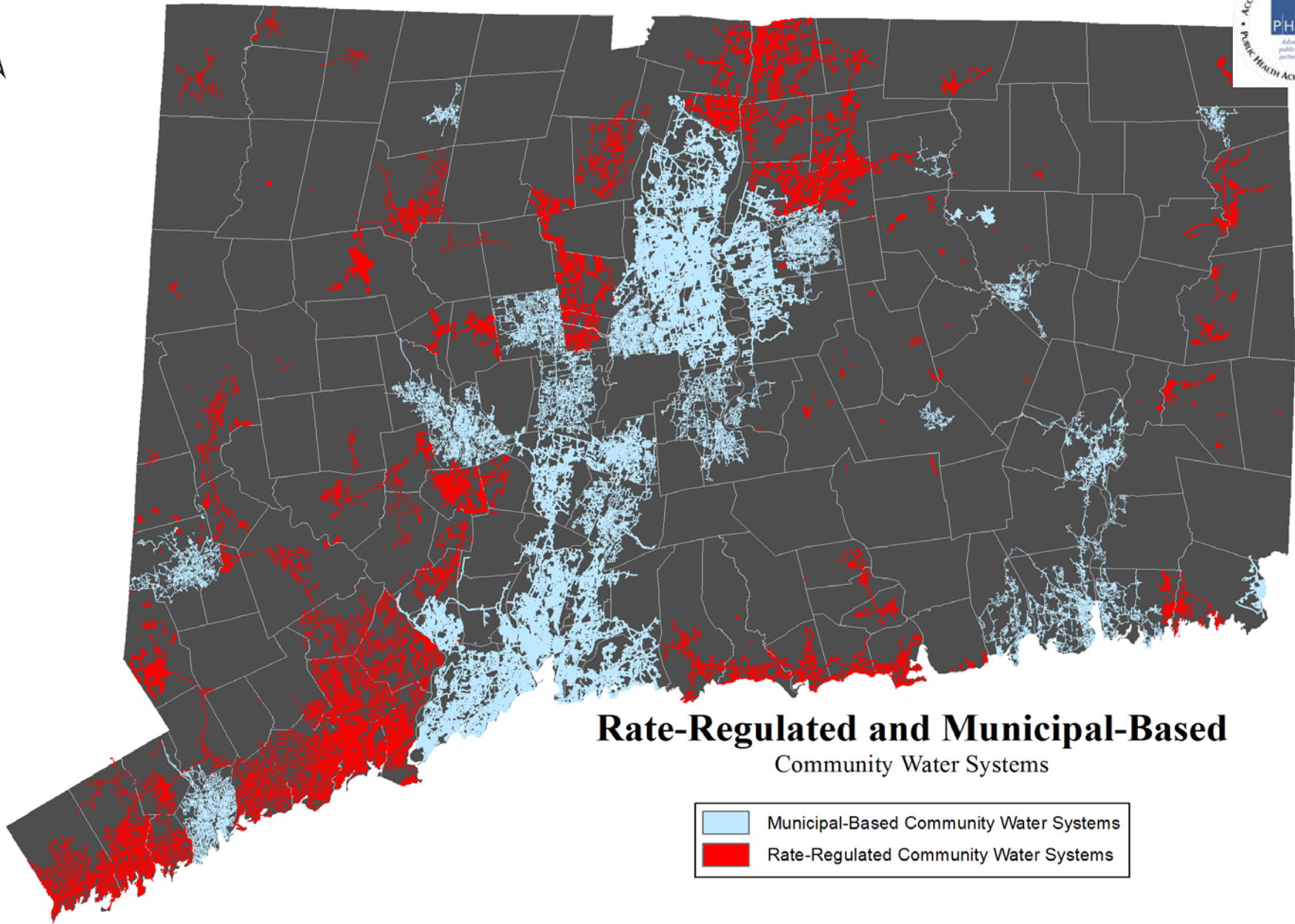


Community Water Systems in CT

Community Public Water Supplies

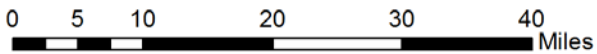
Aquarion Water Co.	Hazardville Water Co.	Montville Water Supply	Norwalk Second Taxing Dist.	Waterbury Water Dept.
Bristol Water Dept.	Heritage Water Co.	New Britain Water Dept.	Southington Water Dept.	Waterford WPCA
Colchester Sewer and Water	Jewett City Water Co.	New London Water Div.	Tariffville Fire Dist. Water Dept.	Watertown Fire Dist. Water Dept.
Cromwell Fire District Water Dept.	Ledyard WPCA	Norwalk First Taxing Dist.	Tolland Water Dept.	Watertown Water and Sewer
Connecticut Water Co.	Manchester Water Dept.	Norwich Public Utilities	Torrington Water Co.	Westerly Water Dept.
Danbury Water Dept.	Meriden Water Div.	Portland Water Dept.	UCONN Main Campus	Windham Water Works
East Lyme Water and Sewer	MDC	Putnam WPCA	Valley Water Systems	Winsted Water Works
Groton Utilities	Middletown Water Dept.	Regional Water Authority	Wallingford Water Dept.	Wolcott Water Dept.





Rate-Regulated and Municipal-Based Community Water Systems

-  Municipal-Based Community Water Systems
-  Rate-Regulated Community Water Systems



Public Health & Drinking Water

What Makes Connecticut Unique

- 22a-417 Prohibits sewage treatment plant discharge and industrial discharges within public water drainage areas (1971)
- Water Company Owned Lands – DPH regulated over 100,000 acres, 25-32 & 25-37c (1970s)
- No swimming, bodily contact, only passive recreational use of water company land, 25-43 and 25-43c
- Broad DPH authority since early 1900s for public health protection of high quality drinking water sources, 25-32 & 25-34
- DPH overseen water supply plans and Water Utility Coordinating Plans since mid 1980s - 25-32d & 25-33c-j
- Long-Standing DPH belief that water for human consumption should be from the highest quality raw water sources of supply with appropriate level of treatment

Thank you

- Lori Mathieu, Public Health Section Chief
- DPH Drinking Water Section
- 860-509-7333
- Lori.mathieu@ct.gov