



IDA REMNANTS UPDATE FROM DESPP/DEMHS AT 5:00 AM THURS SEPT 2nd, 2021

HEAVY RAINFALL NOW ENDING IN EASTERN CONNECTICUT...SEVERE URBAN AND SMALL STREAM FLOODING HAS OCCURRED IN SEVERAL TOWNS ESPECIALLY ACROSS THE SOUTHERN HALF OF CONNECTICUT...

At 5:00 AM radar showed the heavy rainfall ending in eastern Connecticut. Radar rainfall estimates for this storm range from 3' – 4" in Northern CT, 4" – 7" in central CT and 7" – 10" in southern CT. Most of this rain fell in only 6 hours overnight.

Severe urban and small stream flooding has likely occurred in dozens of towns especially in southern and southwestern Connecticut. Severe basement flooding has likely occurred in thousands of homes. Estimates of damage will need to wait for daylight.

In addition, strong winds gusting to 35 - 45 mph at times, combined with completely saturated soils, have downed a moderate number of trees and powerlines. As of 4:45 AM, Eversource and UI were reporting a total of 20,890 customers without power across the state.

Urban and small stream flooding is expected to subside by mid-morning. River flooding may continue into this afternoon and evening.

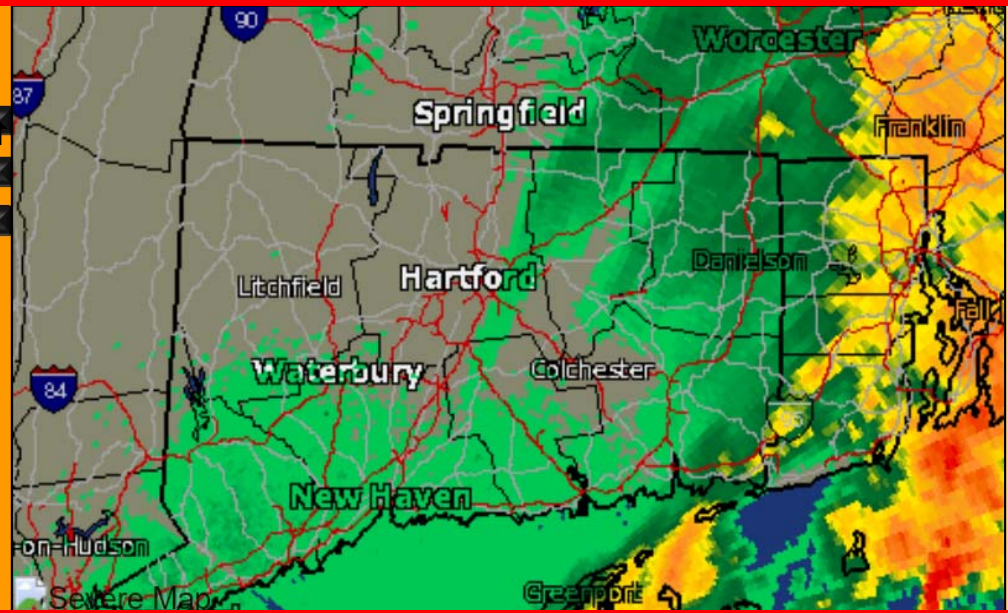
Exact rainfall totals will be sent out as soon as they are published by the NWS.

The Department of Emergency Services and Public Protection, Division of Emergency Management and Homeland Security will continue to closely monitor this serious flooding threat. Another update will be sent out at 7:00 AM.

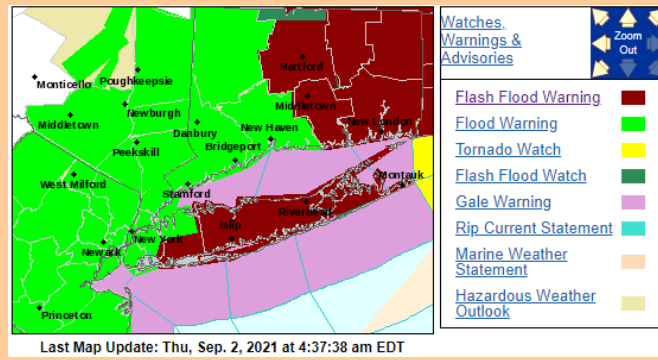
HAZARDS EXPECTED

PRIMARY HAZARDS		CURRENT FORECAST				
		Low	Mod	High	Sig	
Urban Flooding	100%	Green	Yellow	Red	Purple	Blue
Stream Flooding	100%	Green	Yellow	Red	Purple	Blue
River Flooding	90%	Green	Yellow	Red	Purple	Blue

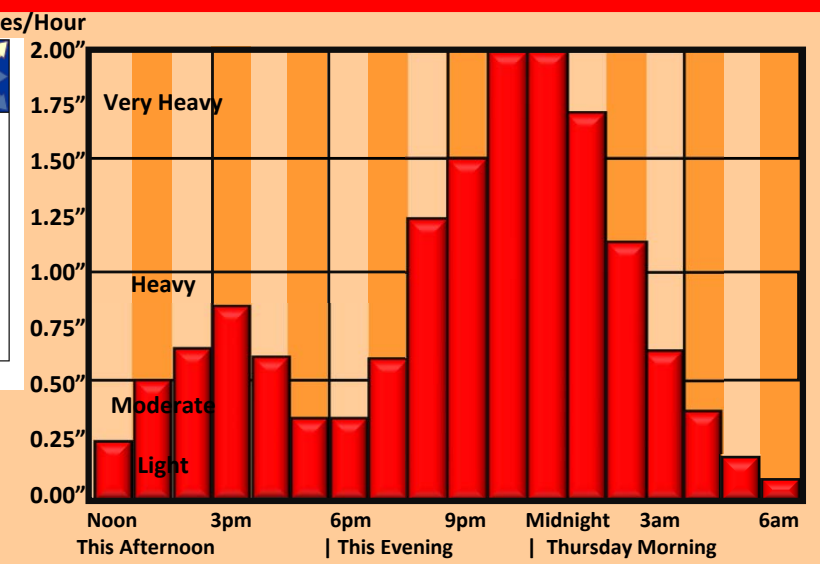
OTHER HAZARDS	IMPACTS
Torrential Downpours	Very High
Dangerous Lightning	Moderate
Tornadoes	2% - 5%
Strong Winds	5% - 15%



CURRENT WATCHES AND WARNINGS



HEAVY RAINFALL TIMING



This product is a public service of the Department of Emergency Services and Public Protection (DESPP), and is intended for informational purposes only. DESPP assumes