



IDA REMNANTS UPDATE FROM DESPP/DEMHS AT 3:00 AM THURS SEPT 2nd, 2021

HEAVY RAINFALL NOW ENDING IN WESTERN CONNECTICUT...SEVERE URBAN AND SMALL STREAM FLOODING HAS OCCURRED IN SEVERAL TOWNS ESPECIALLY ACROSS THE SOUTHERN HALF OF CONNECTICUT...

At 3:00 AM radar showed heavy rain falling in eastern Connecticut. The heavy rain has now ended in western Connecticut. The area of heavy rainfall will continue to slide to the east and should end in eastern Connecticut by 5:00 AM. Radar rainfall estimates for this storm range from 3" - 4" in Northern CT, 4" - 7" in central CT and 7" - 10" in southern CT.

Severe urban and small stream flooding has likely occurred in dozens of towns especially in southern Connecticut. Severe basement flooding has likely occurred in thousands of homes. Estimates of damage will need to wait for daylight.

In addition, strong winds gusting to 35 - 45 mph at times, combined with completely saturated soils, have downed a moderate number of trees and powerlines. As of 2:45 AM, Eversource and UI were reporting a total of 36,223 customers without power across the state.

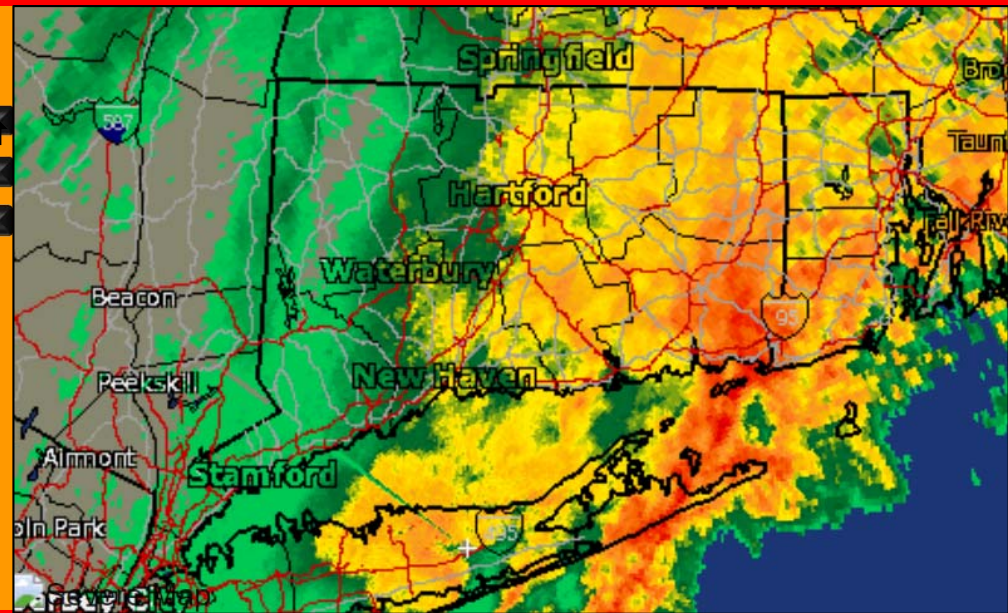
Rest of the Overnight: The heavy rain will taper off in central Connecticut in the next 60 minutes. The heavy rain is expected to taper off in eastern Connecticut by 5:00 AM. Urban and small stream flooding will continue for a few hours after the heavy rain tapers off. **All towns should continue to closely monitor known flood prone areas overnight.**

Later This Morning: Urban and small stream flooding is expected to subside by mid-morning. River flooding may continue into Thursday afternoon and evening. Total rainfall is forecast to range from 4" - 8" with isolated amounts up to 10".

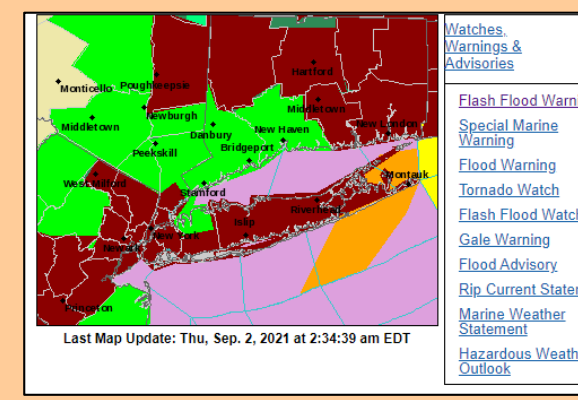
The Department of Emergency Services and Public Protection, Division of Emergency Management and Homeland Security will continue to closely monitor this serious flooding threat. Another update will be sent out at 5:00 AM.

PRIMARY HAZARDS		CURRENT FORECAST				
		Low	Mod	High	Sig	
Urban Flooding	100%	Green	Yellow	Red	Purple	Blue
Stream Flooding	100%	Green	Yellow	Red	Purple	Blue
River Flooding	90%	Green	Yellow	Red	Purple	Blue

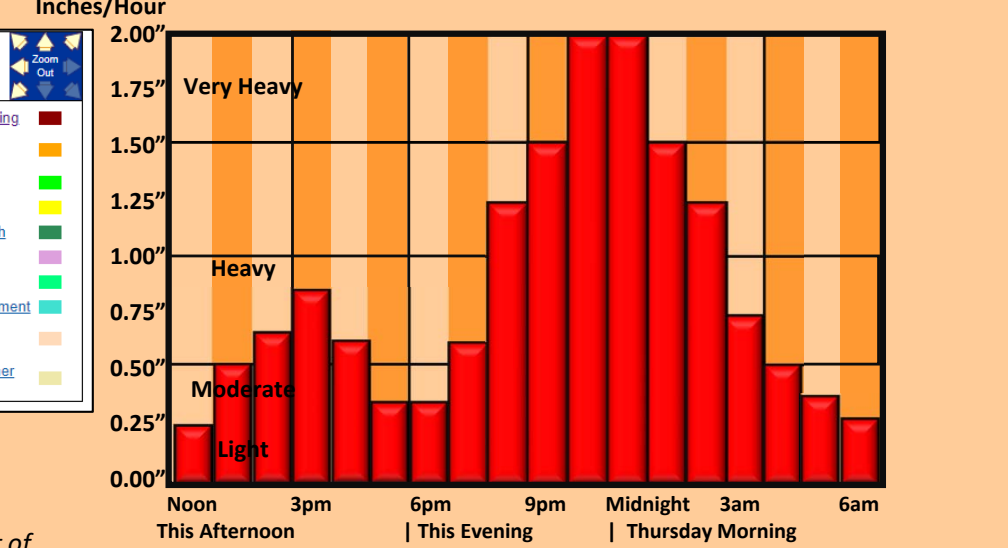
OTHER HAZARDS	IMPACTS
Torrential Downpours	Very High
Dangerous Lightning	Moderate
Tornadoes	2% - 5%
Strong Winds	5% - 15%



CURRENT WATCHES AND WARNINGS



HEAVY RAINFALL TIMING



This product is a public service of the Department of Emergency Services and Public Protection (DESPP), and is intended for informational purposes only. DESPP assumes