



IDA REMNANTS UPDATE FROM DESPP/DEMHS AT 1:00 AM THURS SEPT 2nd, 2021

SEVERE URBAN FLOODING REPORTED IN SEVERAL TOWNS IN FAIRFIELD COUNTY...THE FLASH FLOOD EMERGENCY FOR FAIRFIELD AND NEW HAVEN COUNTIES HAS BEEN EXTENDED UNTIL 2:30 AM...FLASH FLOOD WARNINGS REMAIN IN EFFECT FOR THE REST OF THE STATE...

At 1:00 AM radar showed a large cluster of thunderstorms over central Connecticut moving into eastern CT. This large cluster contains very heavy rainfall with rainfall rates of 2" – 3" inches per hour.

Severe urban flooding has been reported in several towns in southwestern Connecticut. Specifically, many vehicles were reported flooded on roadways in Stamford along with flooding in some municipal buildings. The Byram river in Greenwich and the Rippowam river in Stamford have experienced significant flooding. Evacuations are being conducted from a nursing home in Greenwich. Other small streams and rivers in southwestern CT have likely also experienced significant flooding. Basement flooding of thousands of homes in southwestern and central Connecticut has likely occurred.

Overnight: The heavy rain will taper off in western Connecticut in the next 60 minutes. The heavy rain is expected to taper off in central Connecticut by 3:00 AM and in Eastern CT by 4:00 AM. Urban and small stream flooding will continue for a few hours after the heavy rain tapers off. **All towns should continue to closely monitor known flood prone areas overnight.**

Later This Morning: Urban and small stream flooding is expected to subside by mid-morning. River flooding may continue into Thursday afternoon and evening. Total rainfall is forecast to range from 4" – 8" with isolated amounts up to 10".

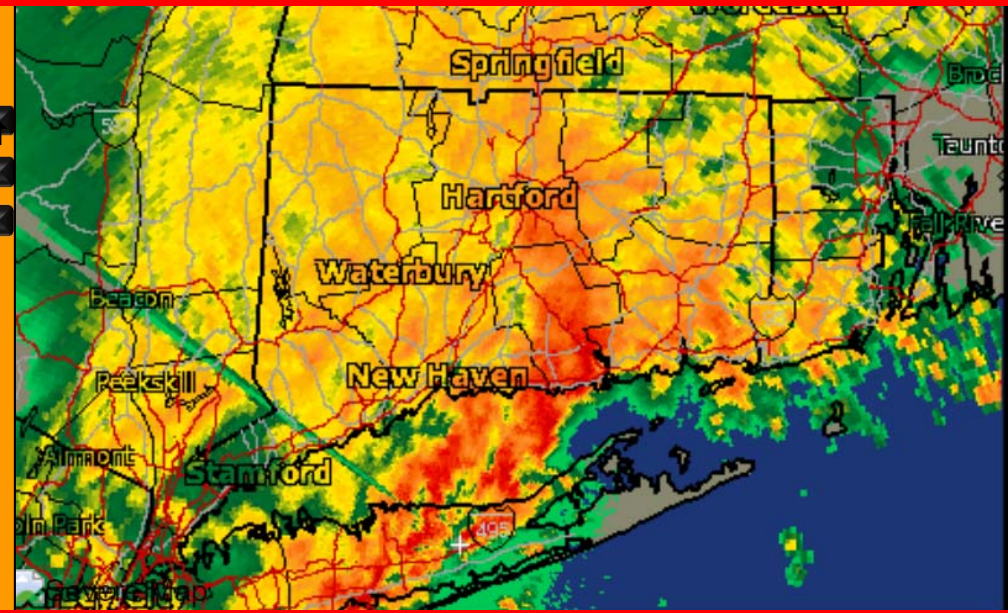
The Department of Emergency Services and Public Protection, Division of Emergency Management and Homeland Security will continue to closely monitor this serious flooding threat. Another update will be sent out at 3:00 AM.

HAZARDS EXPECTED

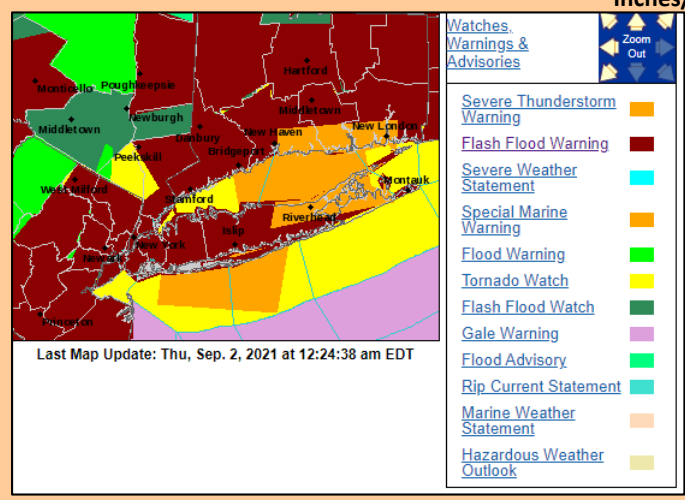
| PRIMARY HAZARDS | | CURRENT FORECAST | | | | |
|-----------------|------|------------------|--------|------|--------|------|
| | | Low | Mod | High | Sig | |
| Urban Flooding | 100% | Green | Yellow | Red | Purple | Blue |
| Stream Flooding | 100% | Green | Yellow | Red | Purple | Blue |
| River Flooding | 90% | Green | Yellow | Red | Purple | Blue |

| OTHER HAZARDS | IMPACTS |
|----------------------|-----------|
| Torrential Downpours | Very High |
| Dangerous Lightning | Moderate |
| Tornadoes | 2% - 5% |
| Strong Winds | 5% - 15% |

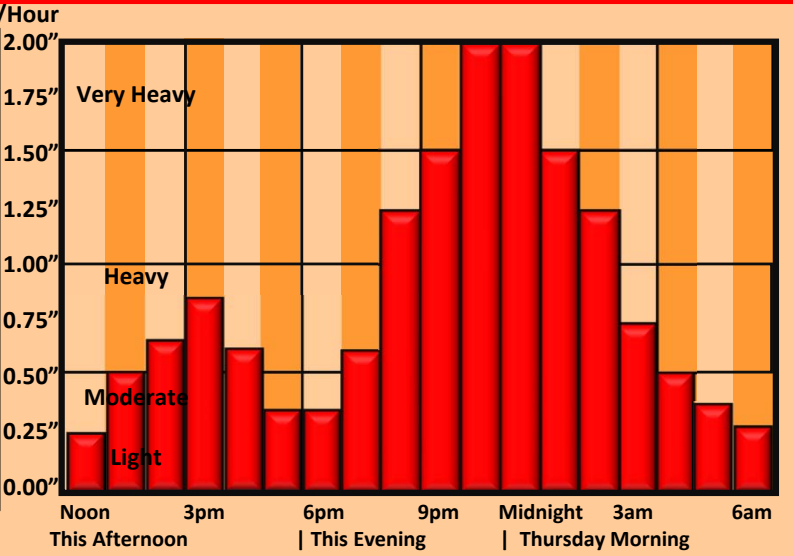
CURRENT RADAR



CURRENT WATCHES AND WARNINGS



HEAVY RAINFALL TIMING



This product is a public service of the Department of Emergency Services and Public Protection (DESPP), and is intended for informational purposes only. DESPP assumes