



IDA REMNANTS UPDATE FROM DESPP/DEMHS AT 9:00 PM WED SEPT 1st, 2021

TORNADO WATCHES CONTINUE IN EFFECT FOR SOUTHERN CONNECTICUT...FLASH FLOOD WARNINGS ISSUED FOR LITCHFIELD, HARTFORD AND FAIRFIELD COUNTIES...VERY HEAVY RAIN APPROACHING SOUTHWESTERN CONNECTICUT AT 9:00 PM...

At 9:00 PM radar showed a large cluster of thunderstorms over northern New Jersey and New York city entering the Stamford area. This large cluster contains extremely heavy rainfall and is expected to move across southern and central Connecticut over the next 3 – 5 hours. Rainfall rates exceeding 2" per hour may occur. A tornado watch remains in effect until 1:00 AM for southern Connecticut. Flash Flood Warnings have been issued for Litchfield, Hartford and Fairfield counties.

Small streams and rivers in southwestern CT (e.g. the Rippowam River in Stamford) are beginning to rise. Other small streams and rivers will start rising quickly in the next few hours as the very heavy rain spreads across the state.

Overnight: Heavy rain is expected between now and 3:00 AM across most of the state with rainfall rates of 1" – 2" per hour at times. Brief periods of extremely heavy rain (rainfall rates of 3" – 4" per hour) are possible in heavier showers or thunderstorms especially in southern CT. Major urban flooding is expected with multiple road and some bridge washouts. Widespread moderate to major small stream flooding and some moderate river flooding is also possible. Basement flooding is also likely. There is a 5% chance of an isolated tornado in any thunderstorms that develop especially in southern CT. **All towns should closely monitor known flood prone areas overnight.**

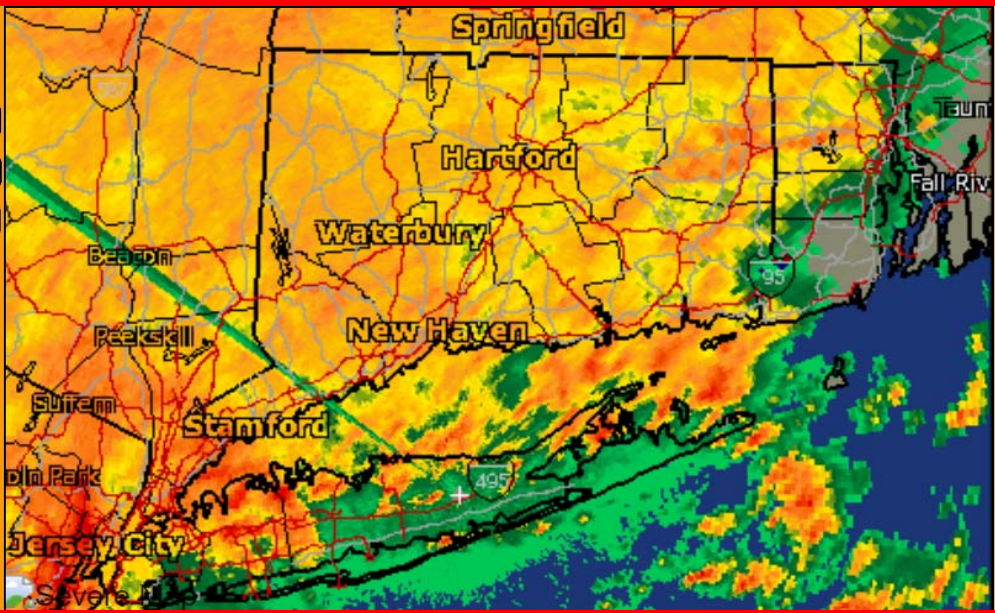
Thursday Morning: The rain is expected to taper off from west to east by daybreak. Urban and small stream flooding is expected to subside by mid-morning. River flooding may continue into Thursday afternoon and evening. Total rainfall is forecast to range from 4" – 8" with isolated amounts up to 10".

The Department of Emergency Services and Public Protection, Division of Emergency Management and Homeland Security will continue to closely monitor this serious flooding threat. Another update will be sent out at 11:00 PM.

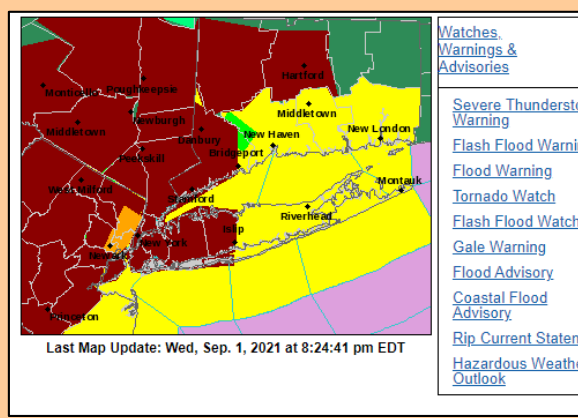
HAZARDS EXPECTED

PRIMARY HAZARDS	CURRENT FORECAST	CURRENT FORECAST				
		Low	Mod	High	Sig	
Urban Flooding	100%	Green	Yellow	Red	Purple	Blue
Stream Flooding	80%	Green	Yellow	Red	Purple	Blue
River Flooding	70%	Green	Yellow	Red	Purple	Blue

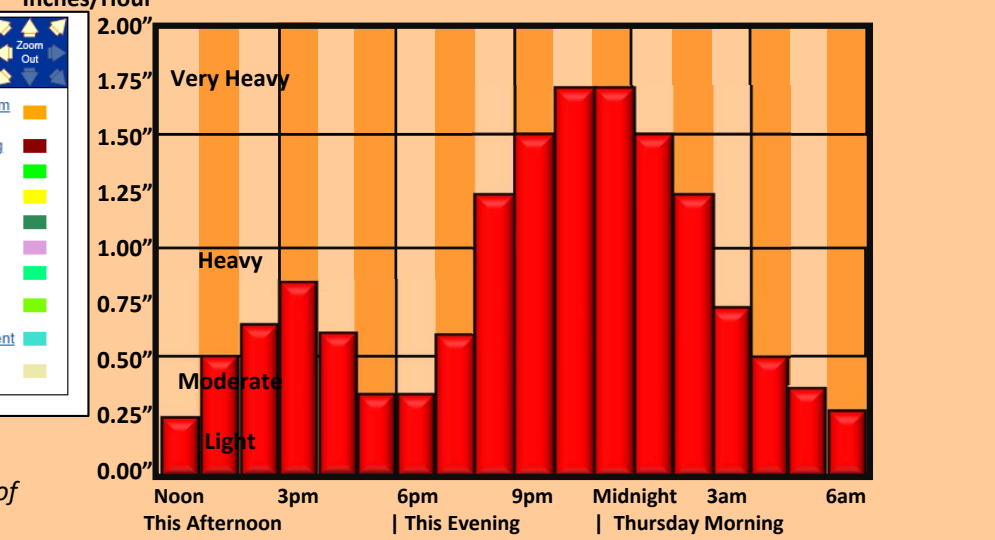
OTHER HAZARDS	IMPACTS
Torrential Downpours	Very High
Dangerous Lightning	Moderate
Tornadoes	2% - 5%
Strong Winds	5% - 15%



CURRENT WATCHES AND WARNINGS



HEAVY RAINFALL TIMING



This product is a public service of the Department of Emergency Services and Public Protection (DESPP), and is intended for informational purposes only. DESPP assumes no liability for the use or distribution of this product or any actions resulting from this