



IDA REMNANTS UPDATE FROM DESPP/DEMHS AT 7:00 PM WED SEPT 1st, 2021

TORNADO WATCHES ISSUED FOR SOUTHERN CONNECTICUT...FLASH FLOOD WARNING ISSUED FOR LITCHFIELD COUNTY...FLOOD WATCHES REMAIN IN EFFECT FOR THE ENTIRE STATE...SIGNIFICANT FLOODING IS LIKELY OVERNIGHT...

Total rainfall thus far has ranged from under 1" at the coast up to 2.5" in parts of northern Connecticut. At 7:00 PM radar showed the leading edge of heavy rain from the remnants of Ida moving into western Connecticut. This heavy rainfall will move across the state from west to east over the next few hours. A tornado watch has been issued until 1:00 AM for southern Connecticut. A flood warning has been issued for Litchfield county until 11:45 PM.

This Evening: Bands of heavy rain will spread across the rest of the state by 9:00 PM. Some embedded thunderstorms can also be expected to move across the state. Rainfall rates of 1" - 2"+ per hour can be expected especially in southern CT by 9:00 PM. Moderate urban flooding is expected to begin by 9:00 PM.

Overnight: Heavy rain is expected between 9:00 PM and 3:00 AM across most of the state with rainfall rates of 1" - 2" per hour at times. Brief periods of extremely heavy rain (rainfall rates of 3" - 4" per hour) are possible in heavier showers or thunderstorms especially in southern CT. Major urban flooding is expected with multiple road and some bridge washouts. Widespread moderate to major small stream flooding and some moderate river flooding is also possible. Basement flooding is also likely. There is a 5% chance of an isolated tornado in any thunderstorms that develop especially in southern CT. **All towns should closely monitor known flood prone areas overnight.**

Thursday Morning: The rain is expected to taper off from west to east by daybreak. Urban and small stream flooding is expected to subside by mid-morning. River flooding may continue into Thursday afternoon and evening. Total rainfall is forecast to range from 4" - 8" with isolated amounts up to 10".

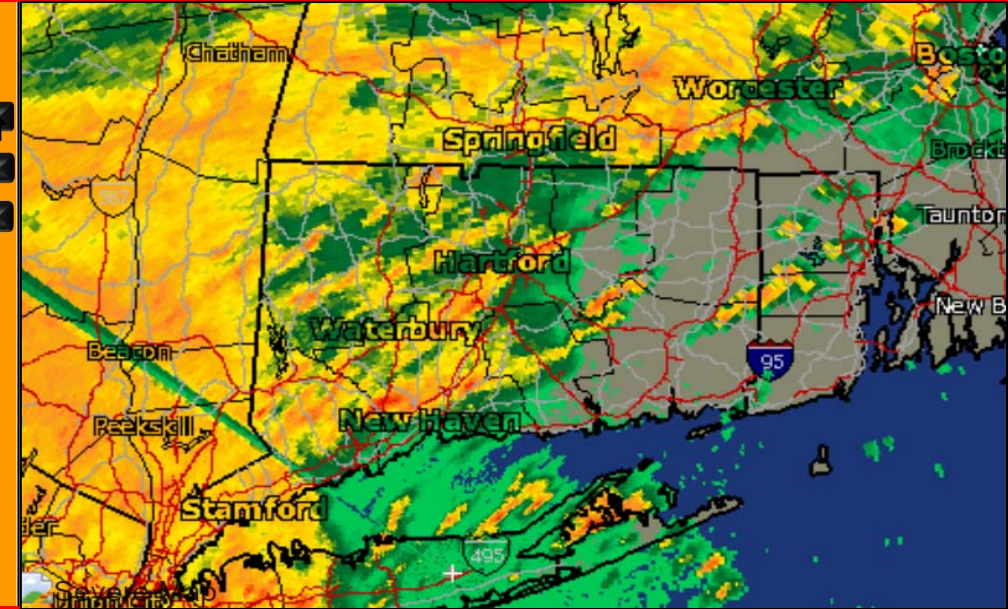
The Department of Emergency Services and Public Protection, Division of Emergency Management and Homeland Security will continue to closely monitor this serious

HAZARDS EXPECTED

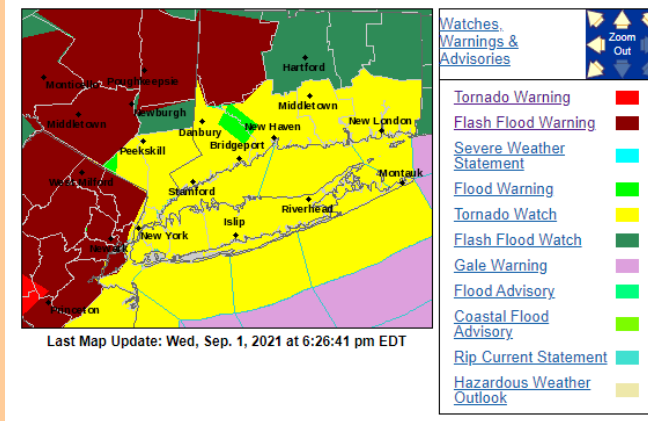
PRIMARY HAZARDS	CURRENT FORECAST	CURRENT FORECAST				
		Low	Mod	High	Sig	
Urban Flooding	100%	Green	Yellow	Red	Purple	Blue
Stream Flooding	80%	Green	Yellow	Red	Purple	Blue
River Flooding	70%	Green	Yellow	Red	Purple	Blue

OTHER HAZARDS	IMPACTS
Torrential Downpours	Very High
Dangerous Lightning	Moderate
Tornadoes	2% - 5%
Strong Winds	5% - 15%

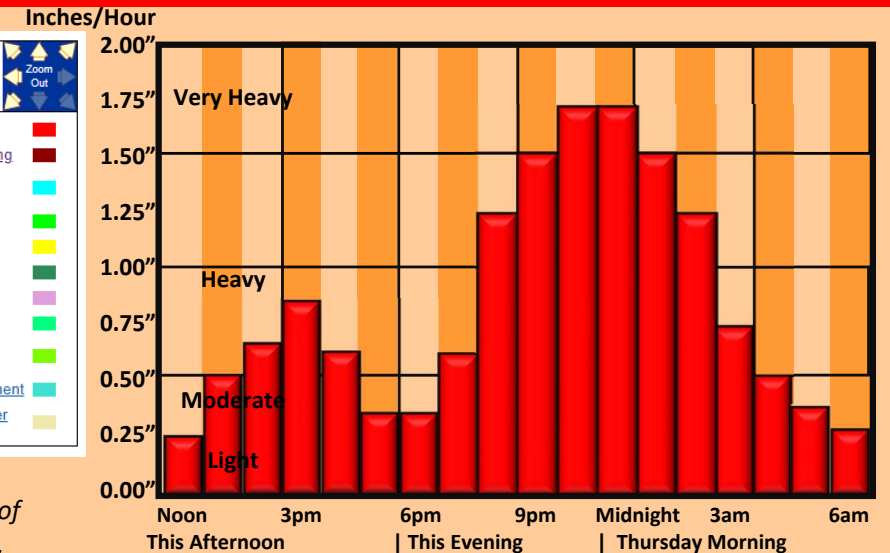
CURRENT RADAR



CURRENT WATCHES AND WARNINGS



HEAVY RAINFALL TIMING



This product is a public service of the Department of Emergency Services and Public Protection (DESPP), and is intended for informational purposes only. DESPP assumes no liability for the use or distribution of this product or any actions resulting from this