



## IDA REMNANTS UPDATE FROM DESPP/DEMHS AT 5:15 PM WED SEPT 1<sup>st</sup>, 2021

**FLOOD WATCHES REMAIN IN EFFECT FOR THE ENTIRE STATE...THE NWS IS STARTING TO ISSUE FLOOD WARNINGS JUST TO OUR WEST...SIGNIFICANT FLOODING IS LIKELY OVERNIGHT...**

At 5:00 PM radar showed a band of moderate to heavy rain with embedded thunderstorms across northern Connecticut. This band is sliding to the northeast at 30 MPH. The SPC continues to place southeastern and coastal Connecticut into the Slight Risk Category for severe thunderstorms with a 5% risk of an isolated tornado.

The latest model runs are showing southern CT with the most rainfall (6" - 8" with isolated amounts up to 10") and northern CT with slightly less rainfall (3" - 6"). However, all towns should be prepared to closely monitor their known flood prone areas tonight. Here's a detailed forecast based on the latest models.

**Rest of This Afternoon:** Rain temporarily tapering off to showers between now and 7:00 PM. Some urban flooding is still possible especially in northern CT where bands of heavy rain have been occurring for the past several hours. There is a 2% - 5% chance of an isolated tornado in any thunderstorms that develop.

**This Evening:** Bands of heavy rain will return from the west by 7:00 PM and spread across the rest of the state by 9:00 PM. Some embedded thunderstorms can also be expected to move across the state. Rainfall rates of 1" - 2"+ per hour can be expected especially in southern CT by 9:00 PM. Moderate urban flooding is expected to begin by 9:00 PM.

**Overnight:** Heavy rain is expected between 9:00 PM and 3:00 AM across most of the state with rainfall rates of 1" - 2" at times. Brief periods of extremely heavy rain (rainfall rates of 3" - 4" per hour) are possible in thunderstorms especially in southern CT. Major urban flooding is expected with multiple road and some bridge washouts. Widespread moderate to major small stream flooding and some moderate river flooding is also possible. Basement flooding is also likely. There is a 5% chance of an isolated tornado in any thunderstorms that develop especially in southern CT. All towns should closely monitor known flood prone areas overnight.

**Thursday Morning:** The rain is expected to taper off from west to east around daybreak. Urban and small stream flooding is expected to subside by mid-morning. River flooding may continue into Thursday afternoon and evening. Total rainfall is forecast to range from 4" - 8" with isolated amounts up to 10". The Department of Emergency Services and Public Protection, Division of Emergency Management and Homeland Security will continue to closely

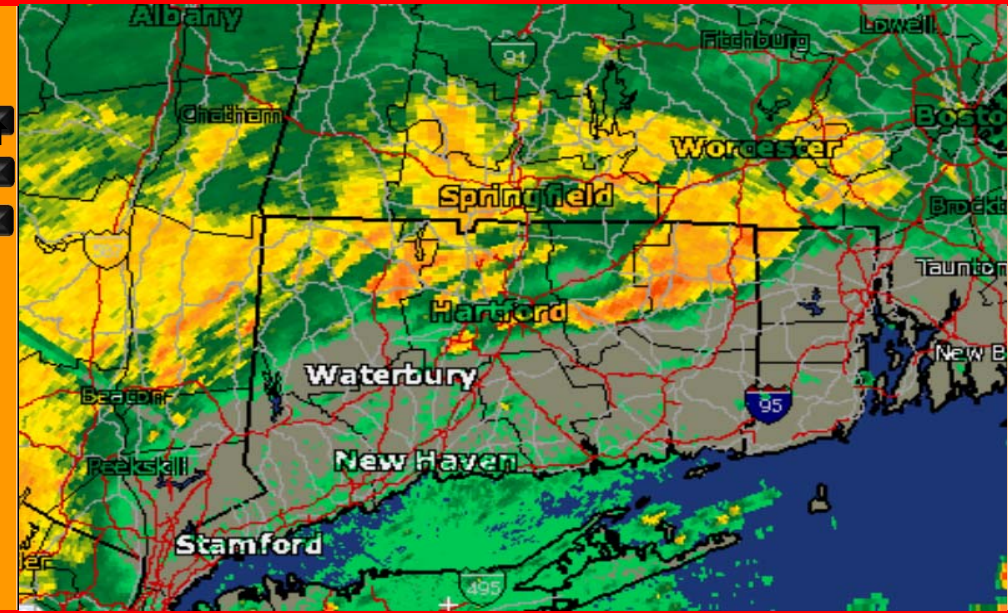
## HAZARDS EXPECTED

PRIMARY HAZARDS	CURRENT FORECAST	CURRENT FORECAST				
		Low	Mod	High	Sig	
Urban Flooding	100%	Green	Yellow	Red	Purple	Blue
Stream Flooding	80%	Green	Yellow	Red	Purple	Blue
River Flooding	70%	Green	Yellow	Red	Purple	Blue

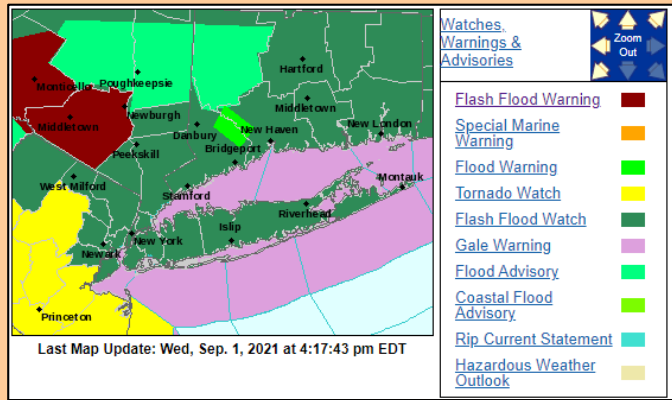
  

OTHER HAZARDS	IMPACTS
Torrential Downpours	Very High
Dangerous Lightning	Moderate
Tornadoes	2% - 5%
Strong Winds	5% - 15%

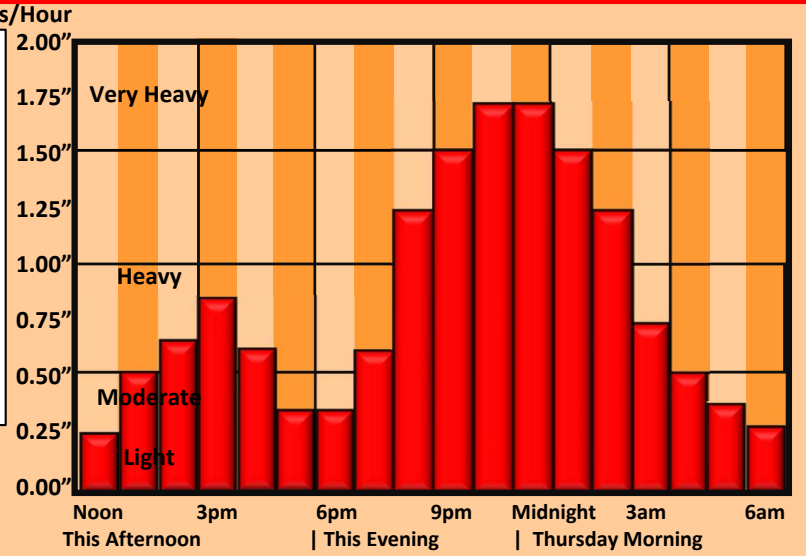
## CURRENT RADAR



## CURRENT WATCHES AND WARNINGS



## HEAVY RAINFALL TIMING



*This product is a public service of the Department of Emergency Services and Public Protection (DESPP), and is intended for informational purposes only. DESPP assumes no liability for the use or distribution of this product or any actions resulting from this*