



IDA REMNANTS UPDATE FROM DESPP/DEMHS AT 11:00 AM WED SEPT 1st, 2021

EARLIER TIMING FOR HEAVY RAINFALL...SOME RISK FOR SEVERE THUNDERSTORMS...FLOOD WATCHES GOING INTO EFFECT FOR THE ENTIRE STATE...REMNANTS OF IDA WILL BRING HEAVY RAIN AND THE POTENTIAL FOR SIGNIFICANT FLOODING LATER TODAY AND TONIGHT...

The National Weather Service has issued flood watches for Connecticut that started at 8:00 AM in southern Connecticut and will begin at 2:00 PM in northern Connecticut. The remnants of former hurricane Ida are currently located over west Virginia. Ida's remnants are forecast to move across our area tonight (see map to the right) bringing a 6-hour period of heavy rain. Here's a detailed forecast based on the current computer models:

This Afternoon: Rain, becoming heavy at times by mid to late afternoon with rainfall rates of ½" to 1" per hour at times. Some urban flooding is possible especially along the coast where a few isolated thunderstorms may occur. There is a 2% - 5% chance of an isolated tornado in any thunderstorms that develop.

Tonight: Bands of heavy rain with some embedded thunderstorms are expected to move across the state. The heaviest rain (rainfall rates of 1" - 2" per hour at times) is expected to occur between 9:00 PM and 4:00 AM. Moderate to major urban flooding is possible with multiple road and some bridge washouts possible. Widespread small stream flooding and some river flooding is also possible. Some basement flooding is also likely. There is a 5% chance of an isolated tornado in any thunderstorms that develop especially along the coast.

Thursday Morning: The rain is expected to taper off from west to east around daybreak. Urban and small stream flooding is expected to subside by mid-morning. River flooding may continue into Thursday afternoon and evening.

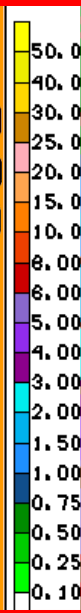
Total rainfall is forecast to range from 3" - 6" with isolated amounts up to 8".

The Department of Emergency Services and Public Protection, Division of Emergency Management and Homeland Security will continue to closely monitor the remnants of Ida and will send out another update at 5:00 PM this afternoon.

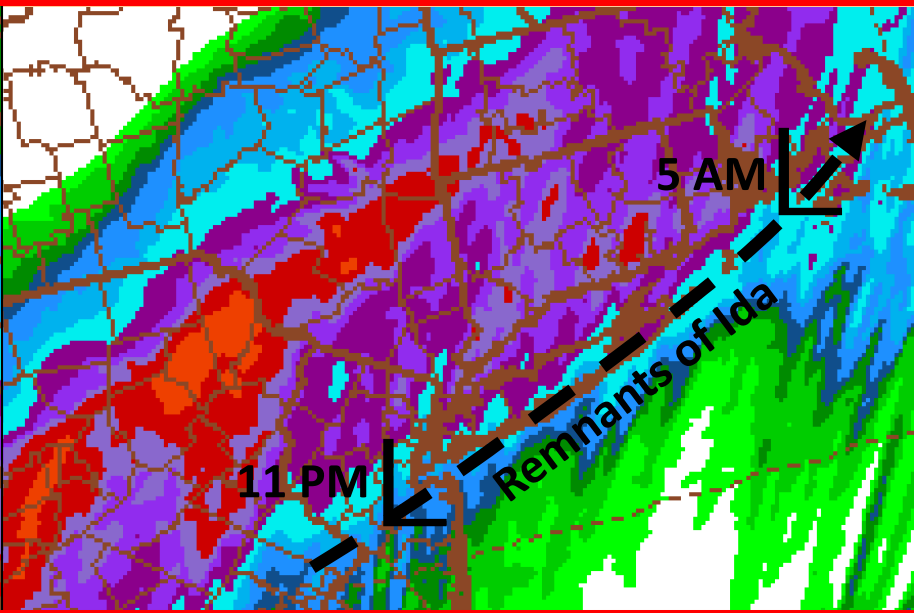
HAZARDS EXPECTED

PRIMARY HAZARDS	CURRENT FORECAST	CURRENT FORECAST			
		Low	Mod	High	Sig
Urban Flooding	90%				
Stream Flooding	60%				
River Flooding	50%				

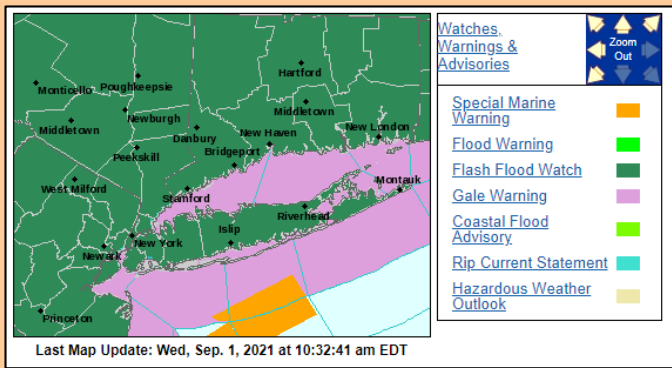
OTHER HAZARDS	IMPACTS
Torrential Downpours	Very High
Dangerous Lightning	Moderate
Tornadoes	2% - 5%
Strong Winds	5% - 15%



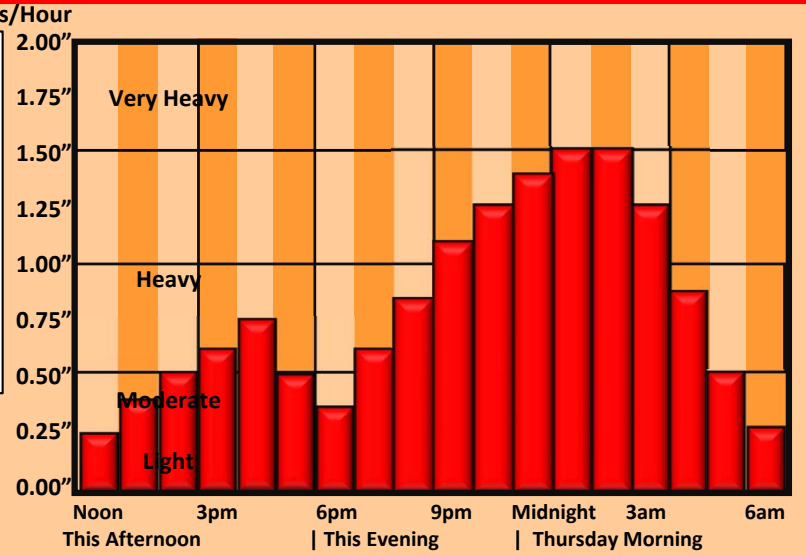
NAMHRES RAINFALL FORECAST



CURRENT WATCHES AND WARNINGS



HEAVY RAINFALL TIMING



This product is a public service of the Department of Emergency Services and Public Protection (DESPP), and is intended for informational purposes only. DESPP assumes no liability for the use or distribution of this product or any actions resulting from this product.