



HEAVY RAIN/FLOODING UPDATE FROM DESPP/DEMHS AT 4:15 PM

LIMITED DAYTIME HEATING HAS LIMITED THE INTENSITY OF THE SHOWERS AND THUNDERSTORMS DEVELOPING THIS AFTERNOON...A FINAL CLUSTER OF SHOWERS IS GETTING ORGANIZED NEAR THE CT/NY BORDER AND WILL MOVE THRU THE STATE OVER THE NEXT SEVERAL HOURS...

At 4:00 PM radar showed a cluster of showers developing near the CT/NY border (see dashed red line). This cluster of showers is expected to move across southern and central Connecticut in the next several hours. The NWS has issued a Flood Advisory for the Danbury area for some of the showers in this cluster.

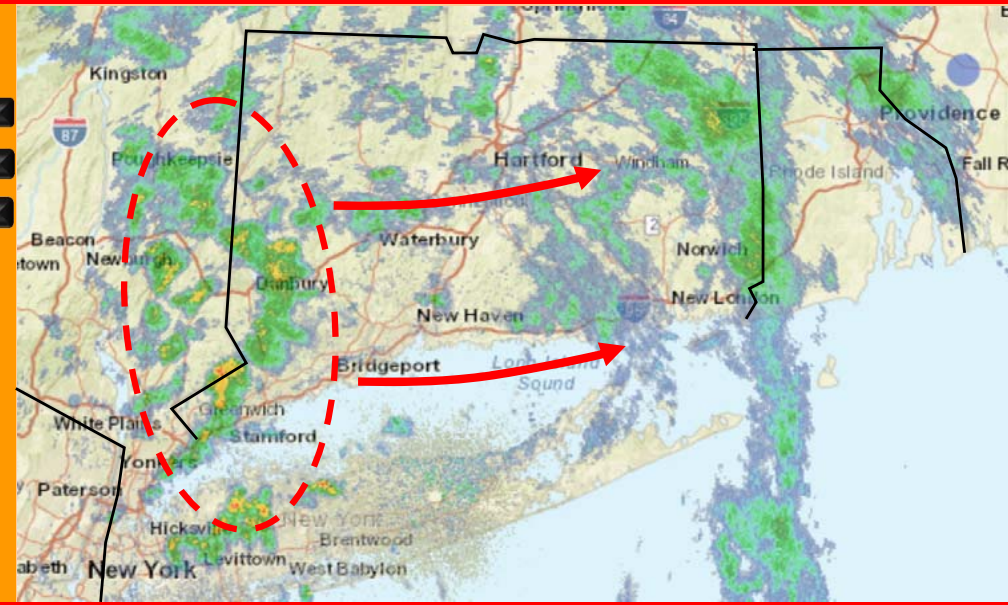
This cluster is expected to be the last significant area of heavy rainfall from Henri. Some additional Flood Advisories or Flash Flood Warnings may be issued as this cluster of showers moves from west to east. As in all dying tropical systems, an isolated weak tornado cannot be ruled out. Most of the activity that remains should die down after sunset.

The Department of Emergency Services and Public Protection will continue to closely monitor flooding conditions this afternoon. A final update will be issued by DESPP / DEMHS at 6:15 PM.

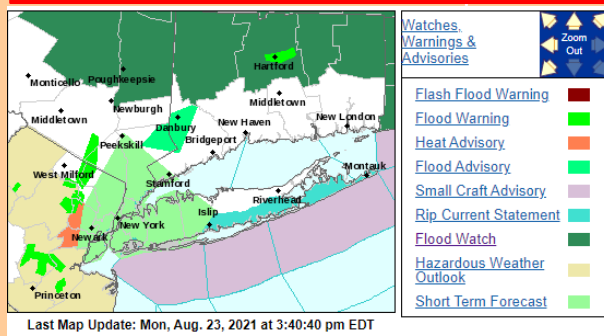
HAZARDS EXPECTED TODAY

PRIMARY HAZARDS	CURRENT FORECAST					
	Low	Mod	High	Sig		
Heavy Rain	80%					
Urban Flooding	70%					
Tornadoes	<2%					
OTHER HAZARDS		IMPACTS				
Dangerous Lightning						Low
Small Stream Flooding						Moderate
River Flooding						Low
Large Hail						None
Strong Winds						Low
Power Outages						Minor

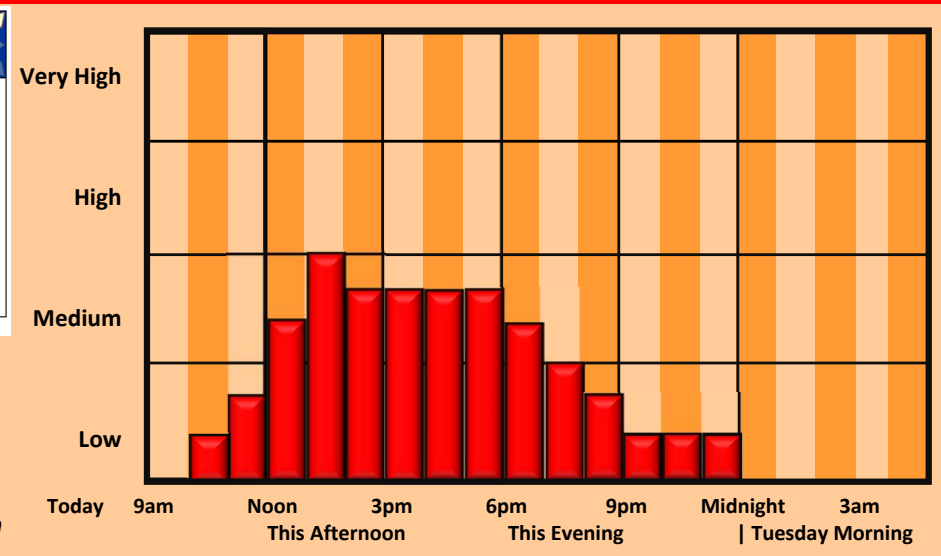
CURRENT RADAR IMAGE OF CONNECTICUT



CURRENT WATCHES AND WARNINGS



THREAT TIMING FOR URBAN/SMALL STREAM FLOODING



This product is a public service of the Department of Emergency Services and Public Protection (DESPP), and is intended for informational purposes only. DESPP assumes no liability for the use or distribution of this product or any actions resulting from this product.