



FLOODING UPDATE FROM DESPP/DEMHS AT 12:15 PM

FLOOD WARNINGS AND ADVISORIES BEING ISSUED BY THE NATIONAL WEATHER SERVICE FOR PARTS OF THE STATE... REMNANTS OF HENRI ALREADY GENERATING SOME HEAVY DOWNPOURS IN CENTRAL CONNECTICUT...

At 12 noon radars are showing the upper-level rotation of the remnants of Henri still centered over Eastern New York State. Bands of heavy showers are occurring in central Connecticut. The NWS has issued a Flash Flood Warning for southern Hartford and Tolland counties until 3:00 PM. Flood Advisories have also been issued for parts of Litchfield, New Haven and Middlesex counties.

Some daytime heating is currently enhancing the development of very heavy downpours and some thunderstorm activity. Any showers and thunderstorms that develop may contain rainfall rates up to 2" per hour. These torrential downpours will quickly cause urban and some small stream flooding. The slow movement of Henri's remnants may also lead to bands of heavy rainfall remaining over the same towns which have the potential to delivery up to 3" of rain in just a few hours. As in all dying tropical systems, an isolated weak tornado cannot be ruled out.

The formation of these heavy showers and some thunderstorms is expected to continue from now until this evening with a peak between 3:00 – 6:00 PM (see radar simulation at 5:00 PM far right). The timing of the heaviest rainfall may coincide with the afternoon rush hour causing significant ponding on roadways and a moderate impact on the rush hour. The heavy downpours are expected to subside this evening after sunset. Total rainfall (see image second from the right) is expected to range from 1" – 3" statewide with the potential for locally higher amounts.

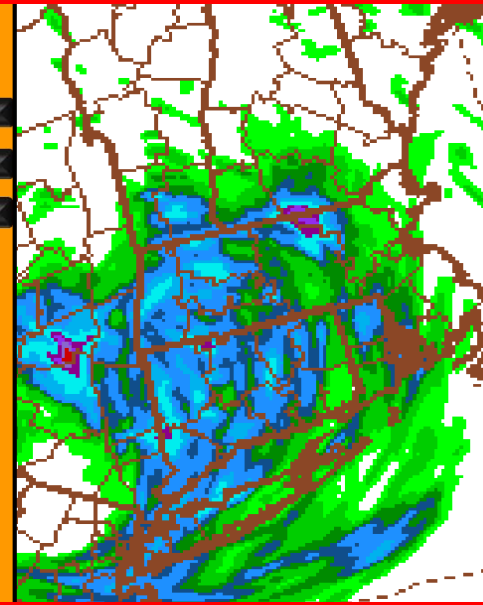
The Department of Emergency Services and Public Protection will continue to closely monitor flooding conditions this afternoon. Another update will be issued by DESPP / DEMHS at 2:15 PM.

HAZARDS EXPECTED TODAY

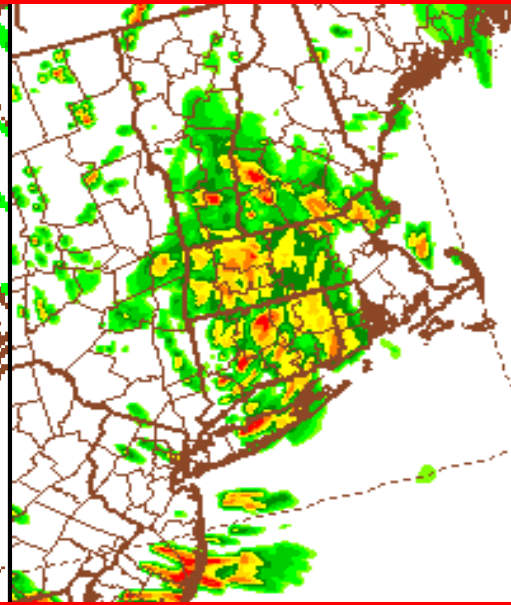
PRIMARY HAZARDS	CURRENT FORECAST						
	Low	Mod	High	Sig			
Heavy Rain	80%						
Urban Flooding	70%						
Tornadoes	<2%						

OTHER HAZARDS	IMPACTS
Dangerous Lightning	Low
Small Stream Flooding	Moderate
River Flooding	Low
Large Hail	None
Strong Winds	Low
Power Outages	Minor

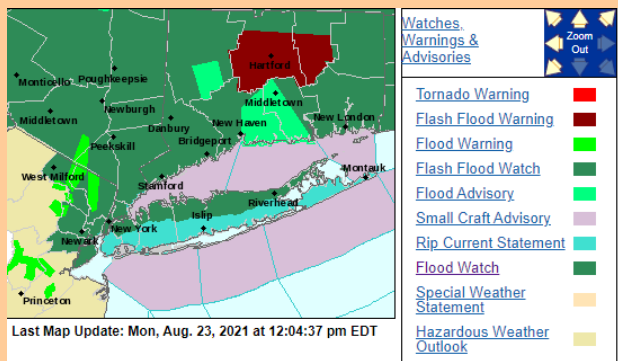
TOTAL RAINFALL TODAY



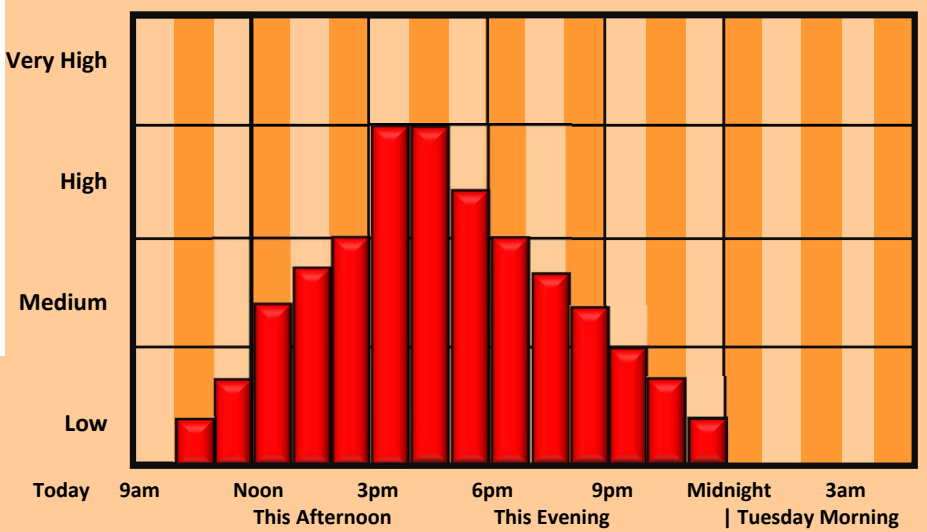
SIMULATED RADAR 5:00 PM



CURRENT WATCHES AND WARNINGS



THREAT TIMING FOR URBAN/SMALL STREAM FLOODING



This product is a public service of the Department of Emergency Services and Public Protection (DESPP), and is intended for informational purposes only. DESPP assumes no liability for the use or distribution of this product or any actions resulting from this product.