

HEAVY RAIN AND STRONG WINDS UPDATE

4:30 PM – FEBRUARY 27, 2024

Connecticut Department of Emergency Services & Public Protection
Division of Emergency Management & Homeland Security

Governor Ned Lamont
Ronnell A. Higgins, Commissioner
Brenda M. Bergeron, Deputy Commissioner
William H. Turner III, Director

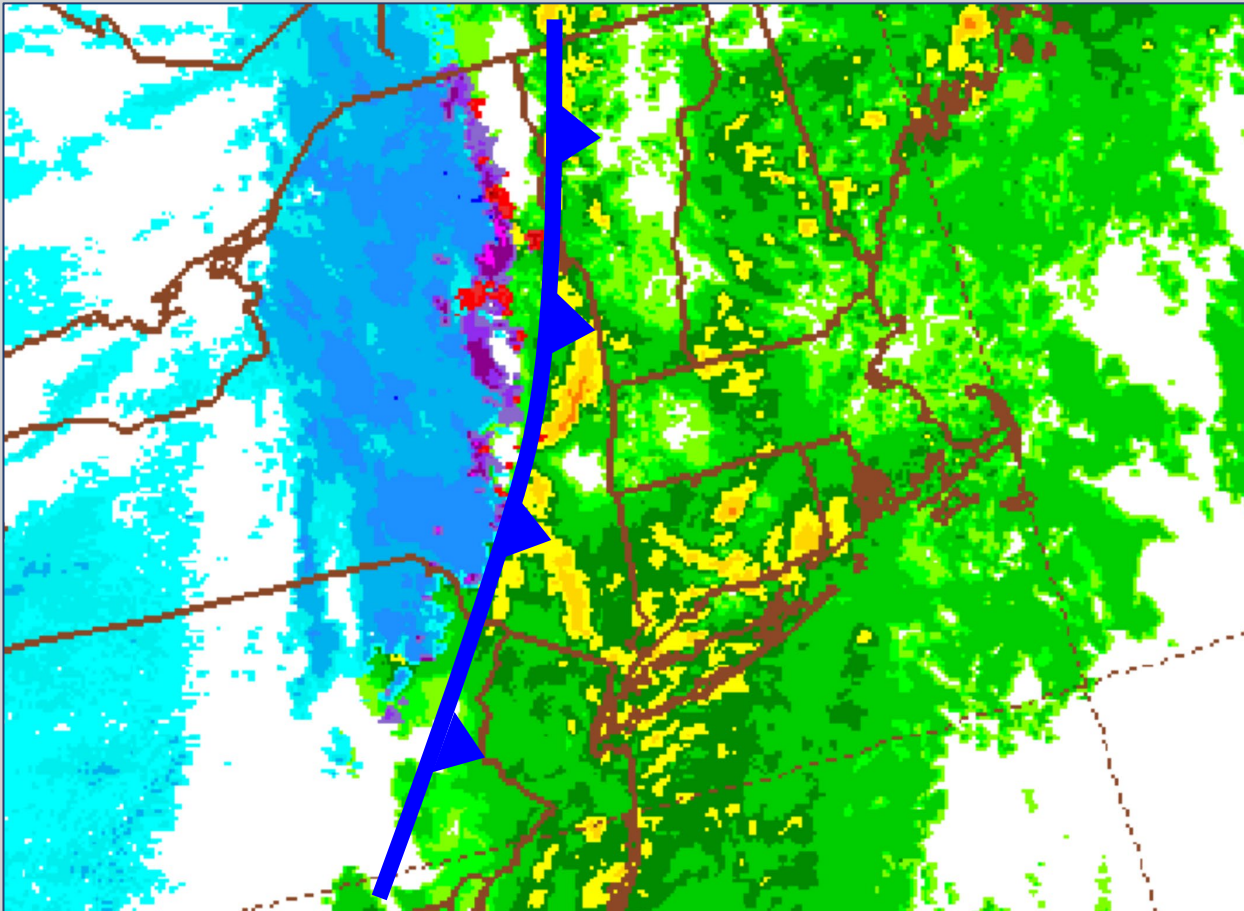
This product is a public service of the Department of Emergency Services and Public Protection (DESPP) and is intended for informational purposes only. DESPP assumes no liability for the use or distribution of this product or any actions resulting from this product.



APPROACHING STORM OVERVIEW...



Weather Map at 8:00 PM Wednesday Evening



A very strong cold front is forecast to move across our area Wednesday Evening. Heavy rain and strong winds ahead of the cold front on Wednesday may cause some minor flooding and a minor impact on power outages.



NWS Wind Advisories Issued...

Current Watch, Warning, Advisory Map



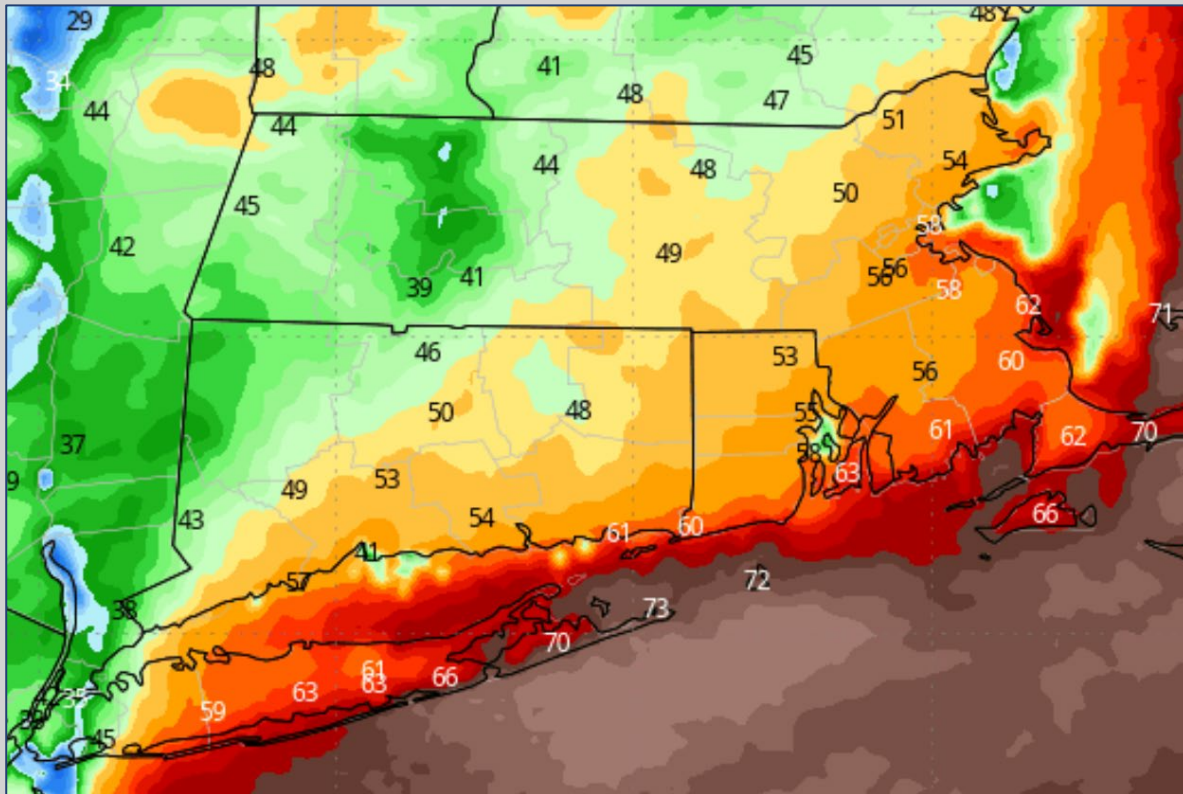
Wind Advisories have been issued by the National Weather Service for the entire state starting at 1:00 PM Wednesday afternoon.



Strong Winds...



Maximum Wind Gusts at 9:00 PM Wednesday Evening



Strong south winds are forecast to gust to 40 – 50 MPH with the potential for a few stronger gusts near the coast Wednesday afternoon and evening. The map to the right shows the NAMHRES model wind gust forecast for 9:00 PM Wednesday evening.

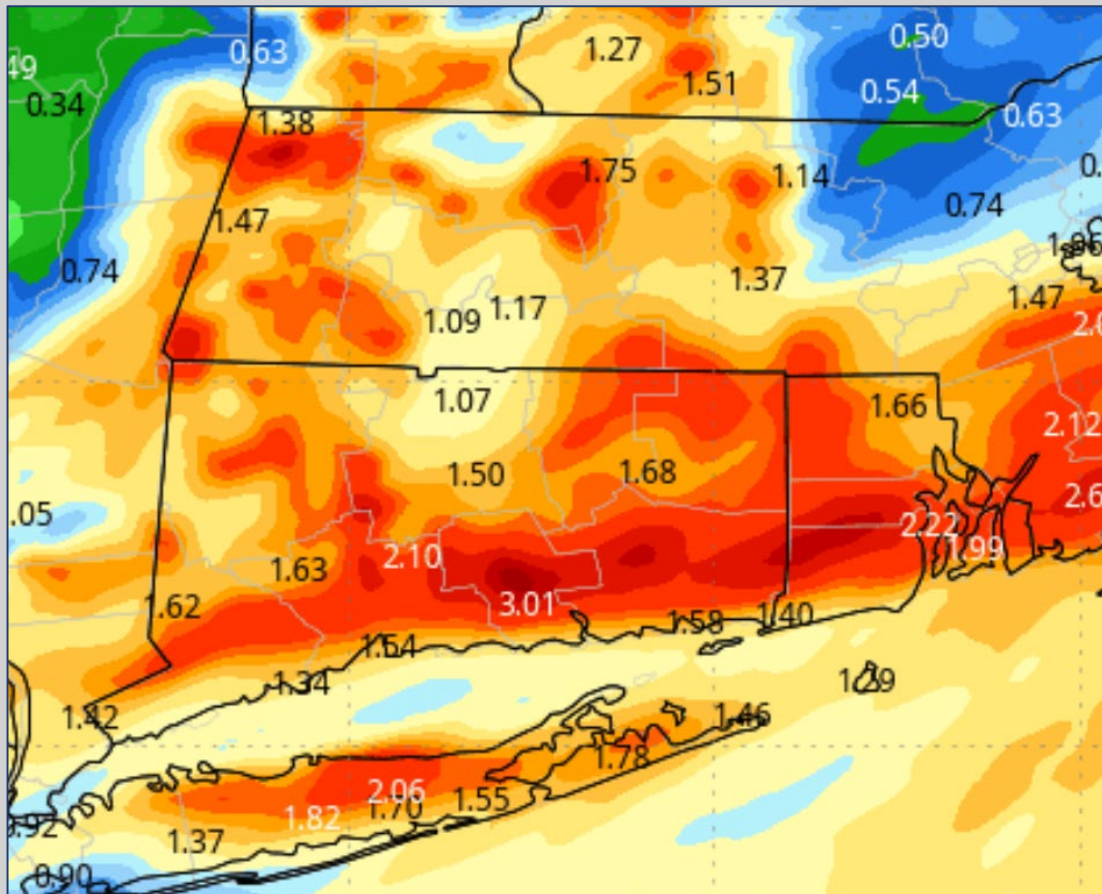
The strong winds may cause some minor tree and powerline damage.



Heavy Rainfall...



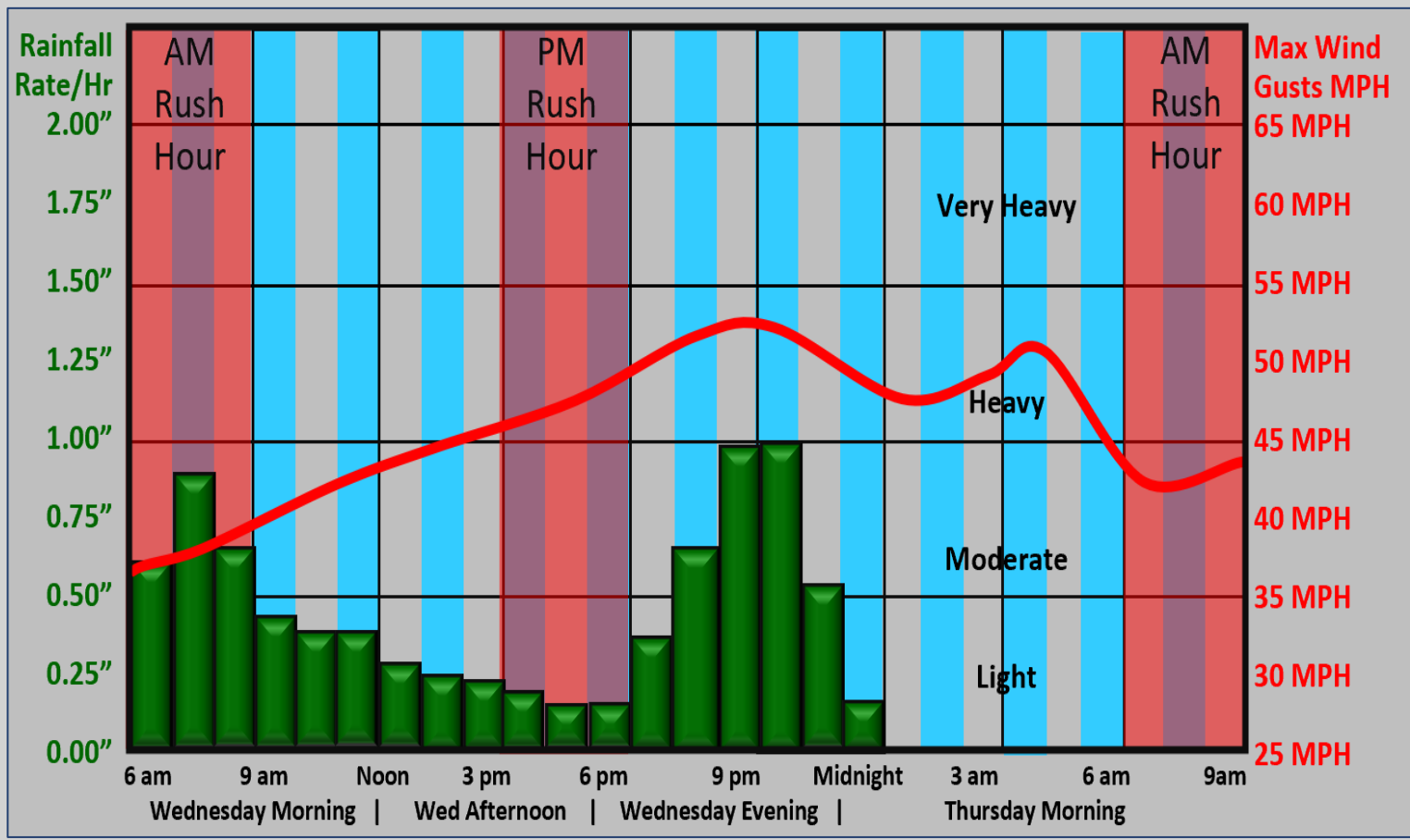
Total Rainfall Forecast



Rain, heavy at times may cause some minor urban flooding. A few small streams may also reach minor flood stage. The map to the left shows the total rainfall forecast across the state. The NAMHRES model is forecasting total rainfall to range from 1" – 3" across the state.



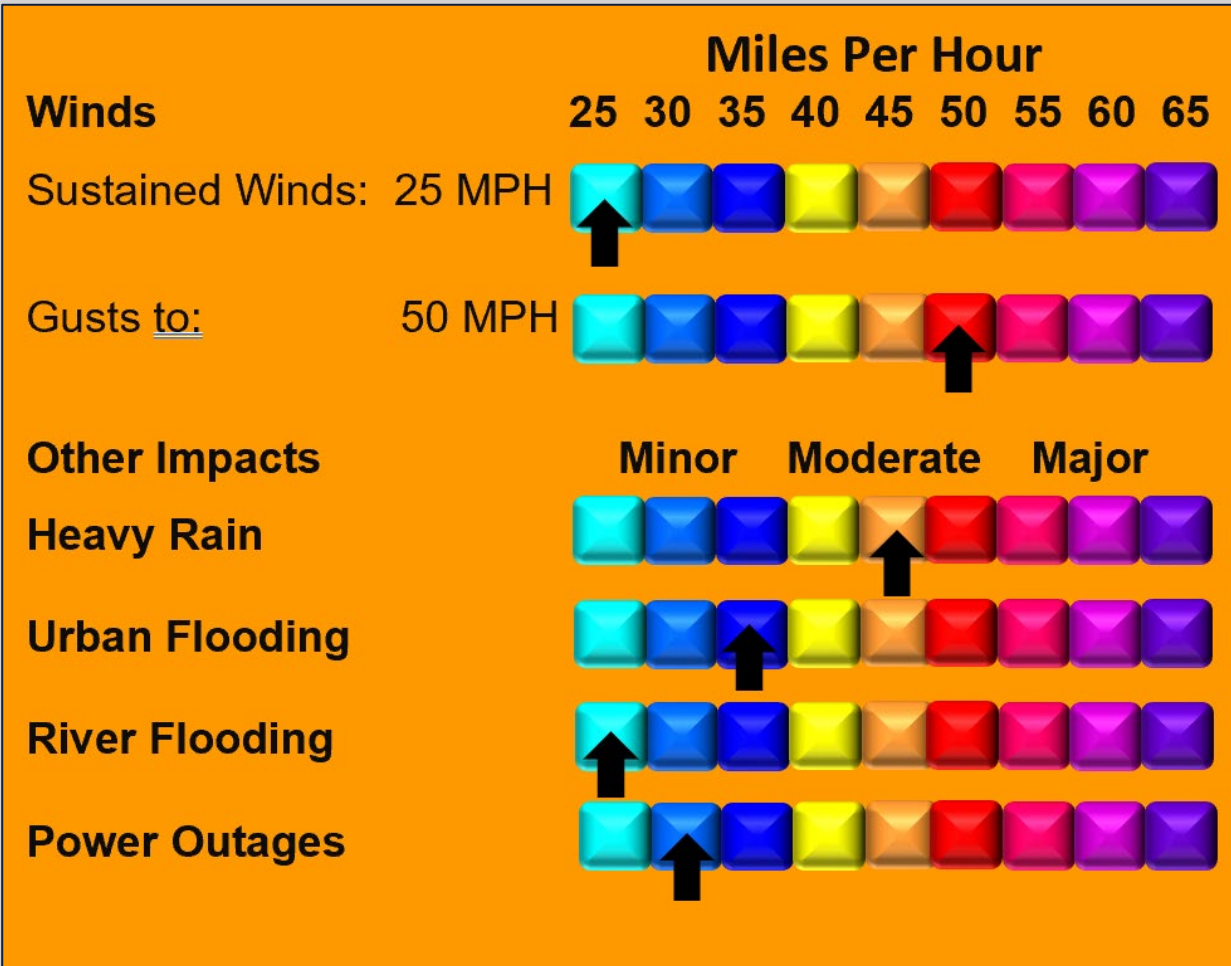
MAX RAINFALL RATES AND WIND GUSTS



The heaviest rain is expected Wednesday morning as a warm front moves across the area and again Wednesday evening as a strong cold front moves from west to east across the area. The strongest winds are expected just ahead of the cold front Wednesday evening.

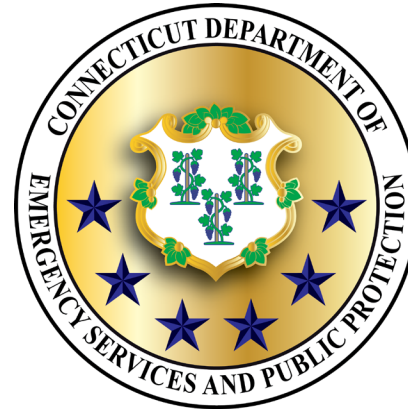


OVERALL STORM IMPACTS



Overall storm impacts are expected to be minor in most towns. There may be a few isolated moderate urban flooding or wind impacts in a few towns if any isolated thunderstorms develop along the cold front.

NEXT UPDATE...



The Department of Emergency Services and Public Protection, Division of Emergency Management and Homeland Security will continue to monitor this approaching storm. The next update will be sent out at 8:00 AM on Wednesday.

Governor Ned Lamont
Ronnell A. Higgins, Commissioner
Brenda M. Bergeron, Deputy Commissioner
William H. Turner III, Director

This product is a public service of the Department of Emergency Services and Public Protection (DESPP) and is intended for informational purposes only. DESPP assumes no liability for the use or distribution of this product or any actions resulting from this product.