



7:00AM – DEC 11, 2023 EXTERNAL UPDATE

THE HEAVY RAIN AND STRONG WINDS HAVE COME TO AN END. RIVERS AND STREAMS CONTINUE TO RISE THROUGHOUT THE STATE. RAIN WILL TRANSITION TO SNOW IN LITCHFIELD COUNTY OVER THE NEXT COUPLE OF HOURS.

Flood Warnings remain in effect for parts of Hartford, New Haven, Middlesex, New London and Windham counties for river and stream flooding that is on-going or expected to develop.

The heaviest rain has come to an end with periods of light to moderate rain expected to continue through the morning hours. Rainfall totals thus far range from over 5" in North Haven, Middletown, Milford and Moosup to 2" of rain in the northwest corner.

As mentioned above river and stream flooding are now the focus. The Yantic River in the Norwich area is of greatest concern. The river is currently sitting at 9.5' in moderate flood stage and is expected to crest close to 11' which would bring it into major flood stage. A crest is forecasted between 11am and 1pm.

The Housatonic River at Falls Village and Gaylordsville is expected to reach minor flood stage with a crest expected on Tuesday.

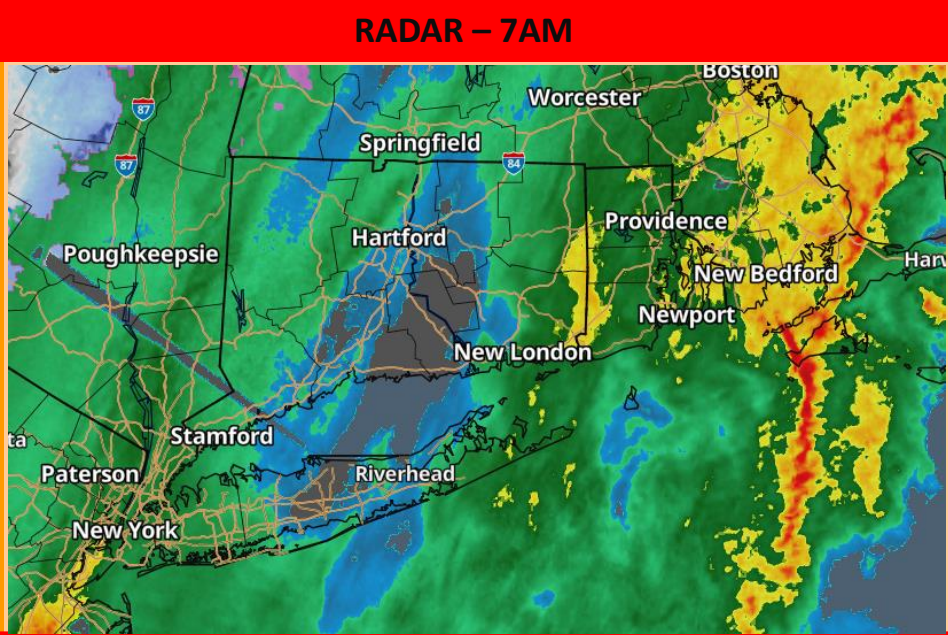
The Quinebaug River at Jewett City is expected to reach minor flood stage with a crest expected at 7am on Tuesday.

The Connecticut River at Hartford and Middletown is expected to reach minor flood stage with a crest expected Wednesday morning.

Rain will transition to snow over the next couple of hours in Litchfield county. A light accumulation of snow is possible.

If you have significant flooding or infrastructure damage, please report it to your Regional Coordinator.

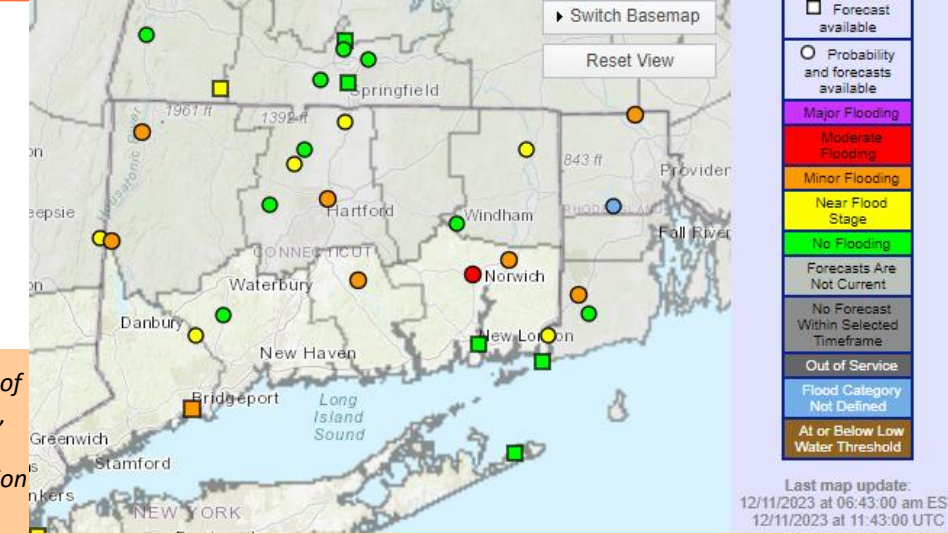
DESPP/DEMHS will continue to monitor the situation and issue another update at 11am.



CURRENT WATCHES AND WARNINGS



EXPECTED RIVER FORECASTS



This product is a public service of the Department of Emergency Services and Public Protection (DESPP), and is intended for informational purposes only. DESPP assumes no liability for the use or distribution of this product or any actions resulting from this product.