



6:00PM – DEC 10, 2023 EXTERNAL UPDATE FOR SUN/MON STORM

DEMHS CONTINUES TO TRACK A SIGNIFICANT STORM SYSTEM THAT WILL BRING IMPACTS TO THE STATE TONIGHT AND INTO THE DAY TOMORROW.

A Flood Watch is in effect for all of Connecticut. A High Wind Warning has been issued for southern New London county. A Wind Advisory has been issued for southern portions of New Haven and Middlesex counties as well as all of New London county.

High-resolution model guidance continues to point toward a significant flooding event for the state with the worst flooding expected areas to the east of Hartford.

Flooding Threat: Scattered areas of moderate to heavy rain has entered the state and will continue into the morning hours. The heaviest rain will arrive late tonight and continue until 6am. Rainfall totals of 3 to 5 inches are expected with higher totals possible. Minor to moderate river flooding is currently forecasted by the Northeast River Forecast Center. If rainfall totals exceed 5 inches which is indicated in some hi-res data, moderate to major river flooding will occur along the smaller rivers and streams throughout the state.

Damaging Wind Threat: Wind gusts of 35 to 45 mph are expected for inland areas of Connecticut. Coastal communities and eastern CT could see gusts to 55 mph. Southern areas of New London county could see gusts to 60 mph. The strongest winds will occur from midnight until 5am.

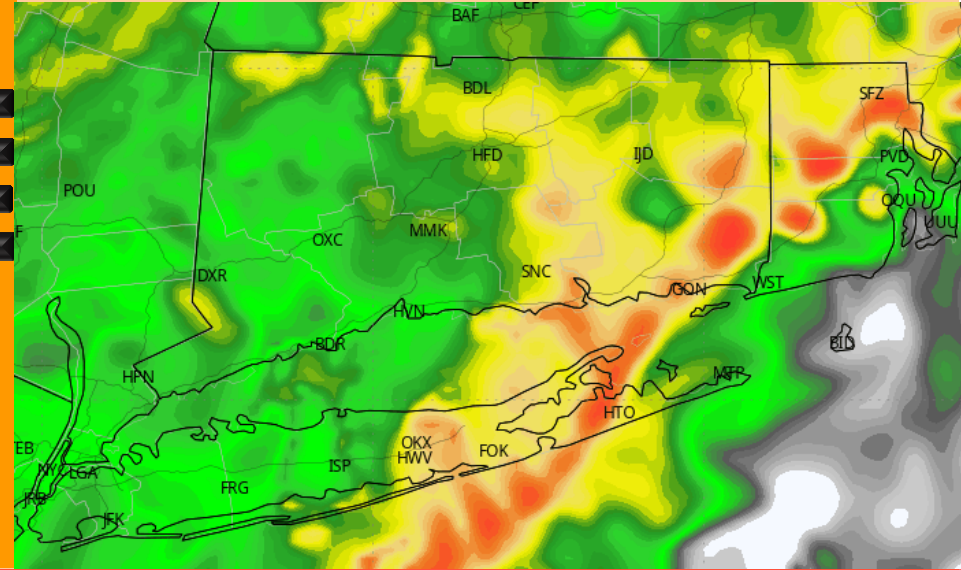
As the storm pulls away accumulating snow is likely in northern Litchfield county and higher elevation areas of Tolland county.

DESPP/DEMHS will continue to monitor the situation and issue additional updates as warranted.

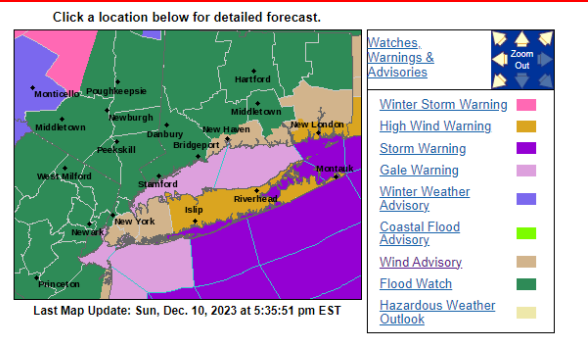
HAZARDS EXPECTED TONIGHT/MONDAY AM

PRIMARY HAZARDS	CURRENT FORECAST					
	Low	Mod	High	Sig		
High Winds	40%					
Urban Flooding	50%					
River Flooding	50%					
Coastal Flooding	<5%					

OTHER HAZARDS	IMPACTS
Power Outages	Moderate
Dangerous Lightning	Low
Accumulating Snow (Litchfield CO)	Moderate



CURRENT WATCHES AND WARNINGS



This product is a public service of the Department of Emergency Services and Public Protection (DESPP), and is intended for informational purposes only. DESPP assumes no liability for the use or distribution of this product or any actions resulting from this product.

3km NAM MODEL

THREAT TIMING FOR ALL HAZARDS

