



HEAVY RAINFALL UPDATE DESPP / DEMHS AT 4:00 PM FRI SEPT 29TH

HAZARDS EXPECTED TODAY

NWS RADAR AT 3:45 PM

LINE OF THUNDERSTORMS CONTAINING VERY HEAVY RAIN HAS FORMED OVER WESTERN LONG ISLAND...MAY MOVE SLOWLY TOWARDS FAIRFIELD OR NEW HAVEN COUNTIES OVER THE NEXT FEW HOURS...FLOOD WARNINGS AND ADVISORIES ARE IN EFFECT FOR MOST WESTERN AND CENTRAL CONNECTICUT...

At 3:45 PM radar showed a line of thunderstorms stretching from the northern coast of western Long Island down to the Jersey shore. This line is nearly stationary. Towns in the Bridgeport area are advised to closely monitor this line of thunderstorms. These thunderstorms likely contain torrential downpours with rainfall rates up to 3" per hour. If this line drifts north into Fairfield or New Haven counties, the torrential downpours could cause significant urban and small stream flooding.

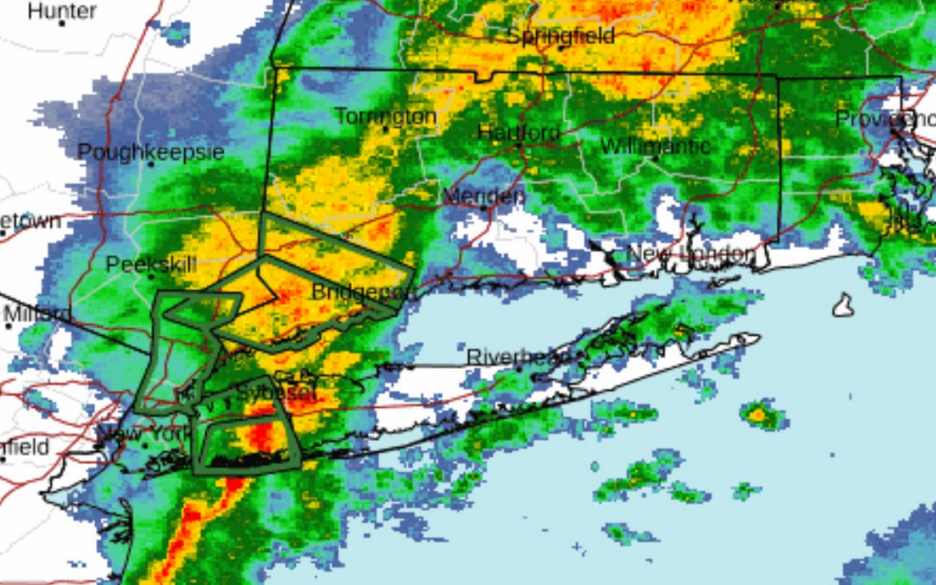
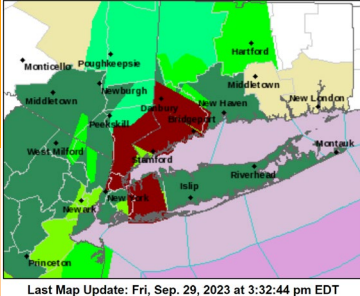
Flash Flood Warnings remain in effect for most of Fairfield county until 5:30 PM. Flood Warnings and Advisories are in effect for Litchfield and Hartford counties until 6:30 PM.

Minor to moderate urban and small stream flooding is expected to continue in Southwestern CT for the next few hours and may become worst if the line of thunderstorms over Long Island moves into southwestern Connecticut. In addition, widespread basement flooding is also likely occurring at this time. Some small isolated landslides are also possible in locations prone to landslides. Westchester, NY reported mud landslides a few hours ago. The rainfall is still expected to slowly taper off tonight.

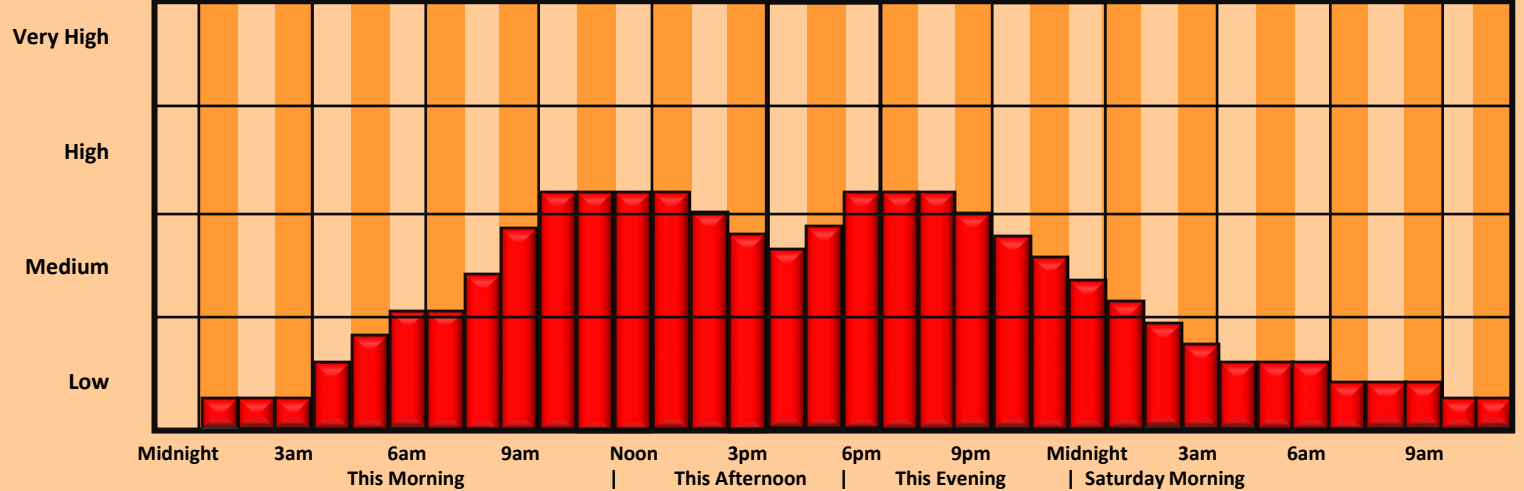
Total rainfall is forecast to generally range from 4' – 8" in southwestern CT and 2" – 4" across most of the rest of the state. Towns should report any significant flooding to their DEMHS Regional Offices as time permits.

The Department of Emergency Services and Public Protection, Division of Emergency Management and Homeland Security will continue to closely monitor this ongoing storm. Another update will be sent out at 8:00 PM or sooner if the forecast changes significantly.

PRIMARY HAZARDS		CURRENT FORECAST			
		Low	Mod	High	Sig
Heavy Rainfall	80%				
Urban Flooding	70%				
Small Stream	50%				
River Flooding	30%				



THREAT TIMING FOR HEAVY RAINFALL AND FLOODING



This product is a public service of the Department of Emergency Services and Public Protection (DESPP), and is intended for emergency management informational purposes only. DESPP assumes no liability for the use or distribution of this product or any actions resulting from this product.