



HEAVY RAIN AND SEVERE UPDATE AT 4:00 PM SUN JULY 16TH 2023

A BAND OF HEAVY RAIN IS MOVING INTO EASTERN CONNECTICUT WITH RAINFALL RATES OF 1"-2" PER HOUR. FLOOD WARNINGS REMAIN IN EFFECT FOR SOUTHWESTERN CT WITH FLASH FLOOD WARNINGS RECENTLY ISSUED FOR NEW LONDON AND MIDDLESEX COUNTIES...THE TORNADO WATCH IS NO LONGER IN EFFECT.

At 3:45 PM radar showed bands of heavy rainfall working into eastern Connecticut with heavy bands working toward the NNE from eastern Long Island. These bands of rain have embedded thunderstorm activity with rainfall rates of 1"-2" per hour. Flash flood warnings have been issued New London and Middlesex counties.

A second band of heavy rainfall is positioned from New Jersey down through Delaware and is expected to impact areas east of Hartford over the next few hours. Cities and towns east of Hartford can expect another 1" – 3" of rainfall from these bands with isolated 3"+ totals in parts of New London and Windham counties.

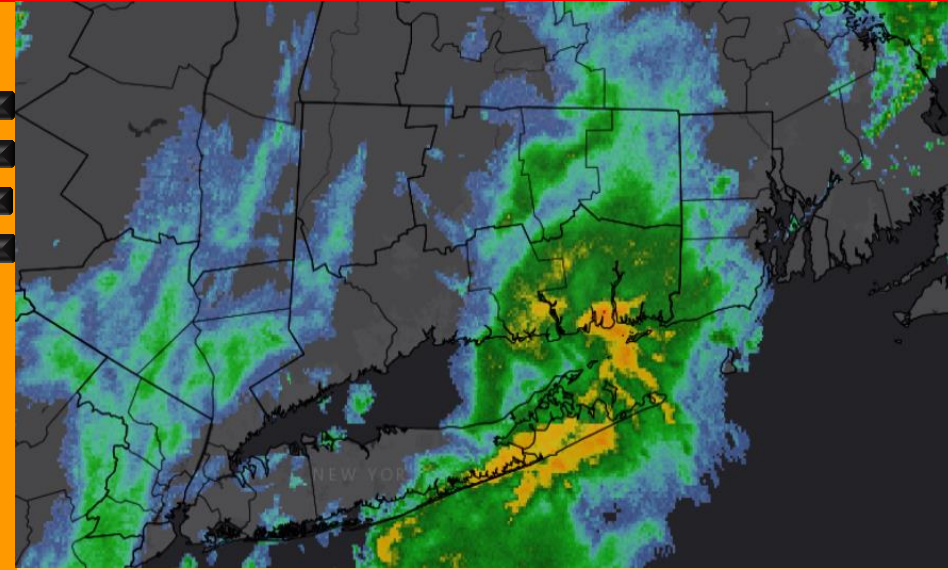
Towns are still advised to closely monitor radars this afternoon and to report any significant flooding or wind damage to their DEMHS Regional Offices as time permits. DESPP / DEMHS will continue to closely monitor the severe weather and heavy rainfall threat today and will send out another update at 6:00 PM.

HAZARDS EXPECTED TODAY

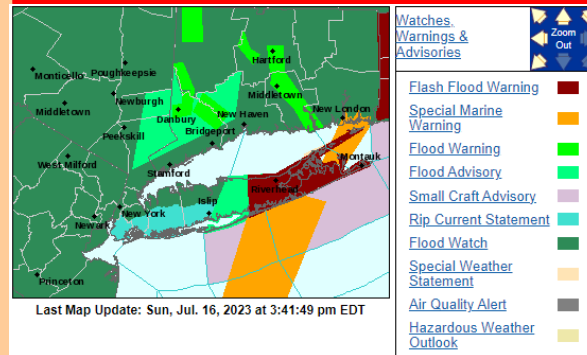
PRIMARY HAZARDS	CURRENT FORECAST	CURRENT FORECAST			
		Low	Mod	High	Sig
Urban Flooding	90%	Green	Yellow	Red	Purple
River Flooding	50%	Green	Yellow	Red	Purple
Severe T-Storms	15%	Green	Yellow	Red	Purple
Tornadoes	5%	Green	Yellow	Red	Purple

OTHER HAZARDS	IMPACTS
Torrential Downpours	High
Dangerous Lightning	Moderate
Strong Winds	Low
Power Outages	Minor

REGIONAL RADAR AT 3:45 PM



CURRENT WATCHES AND WARNINGS



This product is a public service of the Department of Emergency Services and Public Protection (DESPP), and is intended for informational purposes only. DESPP assumes no liability for the use or distribution of this product or any actions resulting from this product.

THREAT TIMING FOR ALL HAZARDS

