



## FLOODING EVENT UPDATE FROM DESPP/DEMHS 10:10 AM TUES SEPT 6      HAZARDS EXPECTED      REGIONAL RADAR AT 9:45 AM

**FLOOD WARNING ISSUED FOR HARTFORD COUNTY...MULTIPLE FLOOD ADVISORIES ISSUED FOR MINOR TO MODERATE URBAN FLOODING ACROSS THE REST OF THE STATE... MODERATE TO HEAVY RAINFALL EXPECTED TO CONTINUE INTO MID-AFTERNOON...**

At 9:45 AM radar showed several clusters of showers and thunderstorms moving from southwest to northeast across the state. A total of approximately 4" – 8" of rain has fallen across the state in the past 18 hours. The highest amounts have been in the Northeast corner of the state with close to 8" in Sterling. The Norwich and New Haven areas have also seen some heavy rainfall with totals close to 6" - 7" in many towns. The city of New Haven is reporting multiple roads being flooded in the past few hours.

For the rest of today, more rounds of moderate to heavy rainfall are expected for the next 5 – 7 hours. Additional rainfall of 1" – 3" can be expected to cause more minor to moderate urban flooding. Some minor small stream flooding is also likely because soils are now saturated and most of the rainfall is running off into brooks and streams.

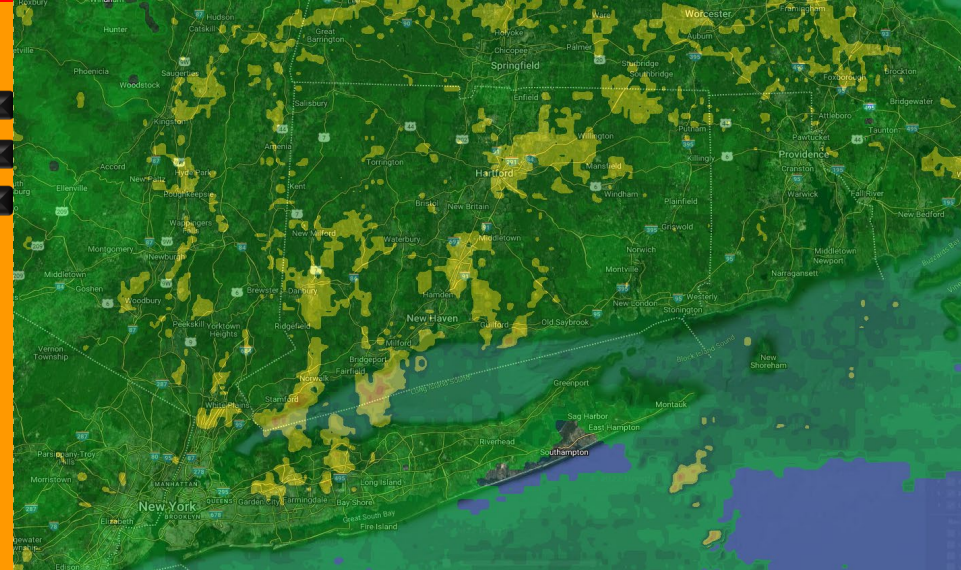
All towns should continue to keep a close eye on the radars for any torrential downpours in their towns for the next 6 - 8 hours.

DESPP/DEMHS will continue to closely monitor the latest conditions and will send out another update at 1:00 PM.

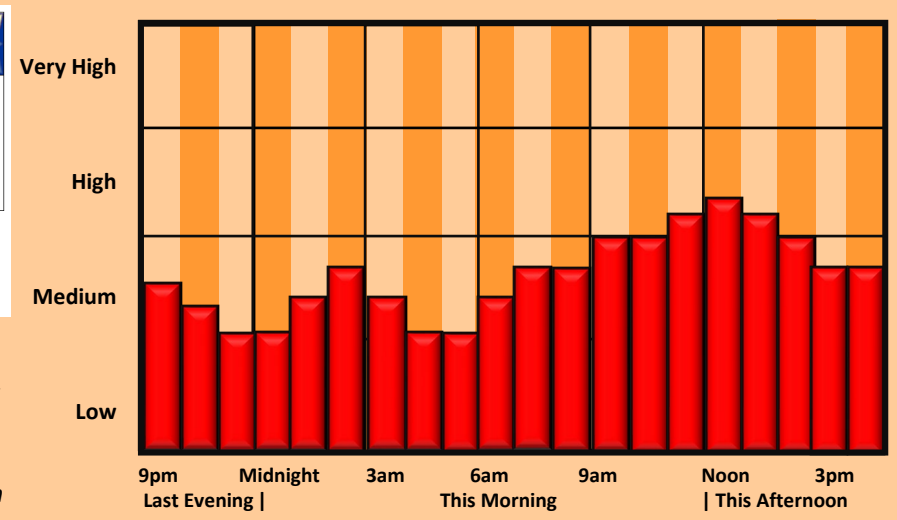
PRIMARY HAZARDS	CURRENT FORECAST						
	Low	Mod	High	Sig			
Heavy Rain	80%						
Urban Flooding	60%						
Stream Flooding	30%						

OTHER HAZARDS	IMPACTS
Dangerous Lightning	Low
River Flooding	Low
Large Hail	None
Strong Winds	Low
Power Outages	Minor



### CURRENT WATCHES AND WARNINGS      THREAT TIMING FOR URBAN/SMALL STREAM FLOODING



*This product is a public service of the Department of Emergency Services and Public Protection (DESPP), and is intended for informational purposes only. DESPP assumes no liability for the use or distribution of this product or any actions resulting from this product.*