



## SEVERE WEATHER UPDATE FROM DEMHS/DESPP AT 2:00 PM JULY 25<sup>th</sup>      HAZARDS EXPECTED      SPC FORECAST      SIMULATED RADAR 4:00 PM

### A SEVERE THUNDERSTORM WATCH HAS BEEN ISSUED FOR CONNECTICUT AND MOST OF NEW ENGLAND UNTIL 8:00 PM...

The NOAA Storm Prediction Center (SPC) continues to place all of the state into the Slight Risk Category for severe thunderstorms early this afternoon and again this evening. At 1:45 PM radar showed showers over eastern Connecticut and a cluster of strong to severe thunderstorms over central Long Island. Temperatures are currently in the mid 80's across most of the state with humid conditions.

The HRRR and NAMHRES models are forecasting that some of the showers over eastern Connecticut may intensify into thunderstorms over the next hour or two as the showers move into Rhode Island. Another thin line of showers and thunderstorms is currently taking shape southwest of Albany, New York. This line is moving to the east at 30 – 35 MPH. The computer models are forecasting that this line may reach the northwest hills by 5:00 PM.

The SPC is forecasting that any thunderstorms that form will have a 15% chance of containing strong winds and a 2% chance of containing a weak tornado. The airmass over the state is humid and brief torrential downpours from these storms could deliver 1" – 2" of rain in a short period of time. This rainfall could cause minor urban flooding.

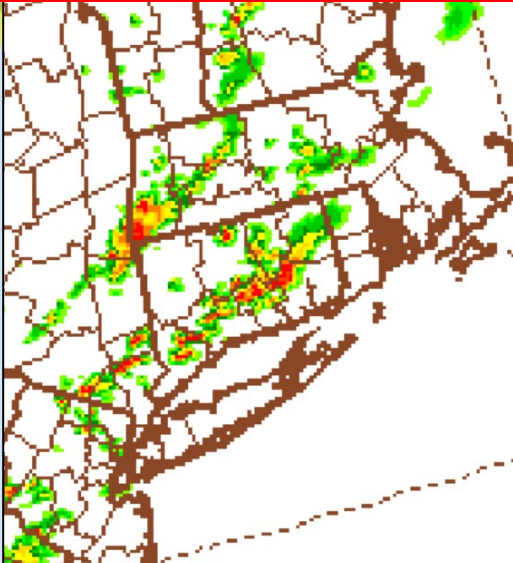
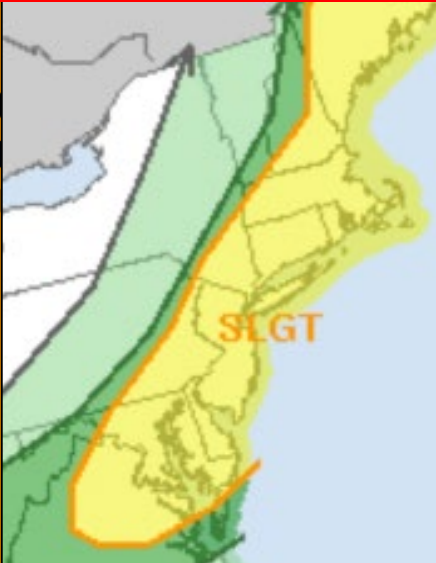
The severity of the thunderstorms in the second line will depend in part on how much sunshine we see and how much warming occurs during the mid-afternoon. If skies become partly sunny for a few hours and temperatures rise into the upper 80's, this could provide more energy for the approaching line of thunderstorms and severe thunderstorms may be more likely. The period for potential severe storms is from 5:00 – 800 PM.

The thunderstorm activity is expected to diminish after sunset and end by 10:00 PM. The Department of Emergency Services and Public Protection, Division of Emergency Management and Homeland Security will continue to monitor the latest forecasts. However, this will be the final update unless significant severe weather occurs.

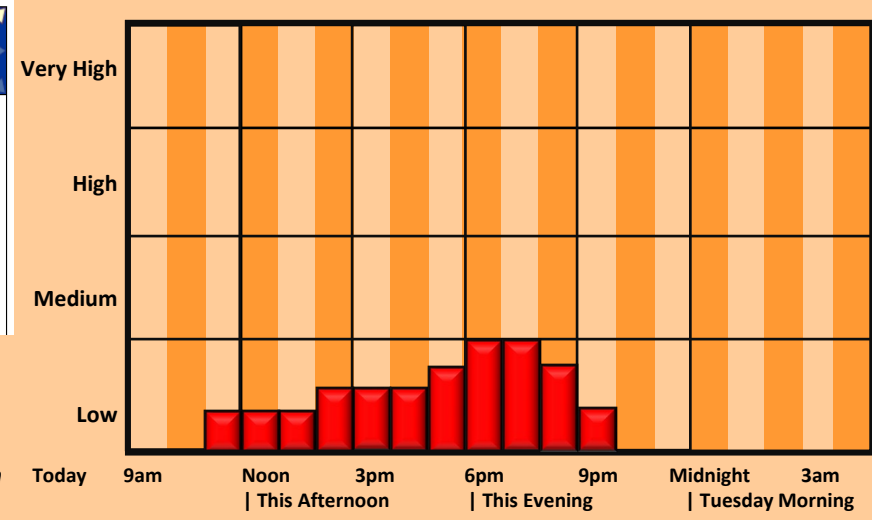
PRIMARY HAZARDS	CURRENT SPC FORECAST				
	Low	Mod	High	Sig	
Large Hail	5%	▲			
Strong Winds	15%		▲		
Tornadoes	2%	▲			

OTHER HAZARDS	IMPACTS
Torrential Downpours	Moderate
Dangerous Lightning	Moderate
Urban Flooding	Minor
Small Stream Flooding	None
Power Outages	Minor



## CURRENT WATCHES AND WARNINGS      THREAT TIMING FOR SEVERE WEATHER



*This product is a public service of the Department of Emergency Services and Public Protection (DESPP), and is intended for informational purposes only. DESPP assumes no liability for the use or distribution of this product or any actions resulting from this product.*