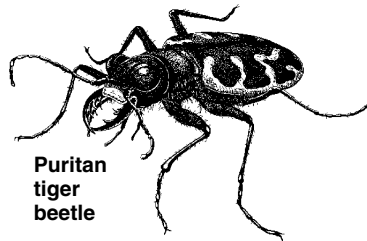


## Endangered Species

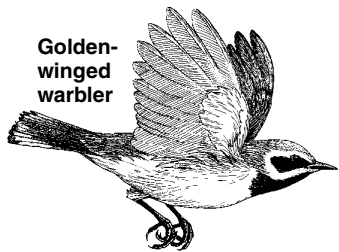
Almost 600 plants and animals are found on Connecticut's Endangered, Threatened and Special Concern Species List. Most are endangered because they have lost their habitat. Others are in trouble because of pollution, illegal trade or competition from nonnative (not from Connecticut) animals or plants.

### What does endangered mean?

**Endangered** means that there are no more than 5 places in the state where the plant or animal is found.



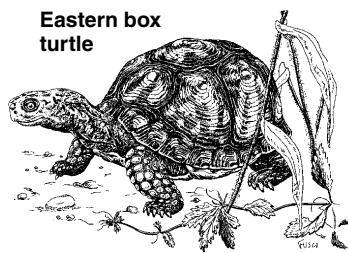
Puritan tiger beetle



Golden-winged warbler

**Threatened** means a plant or animal is found in no more than 9 places.

**Special concern** means there isn't very much habitat for the plant or animal in the state. It can also mean that a plant or animal was once found here in Connecticut but isn't anymore (extirpated).



Eastern box turtle

### What can you do to help endangered species?

*Protect natural habitats.*

*Do not disturb areas with endangered species.*

*Learn more and teach others about endangered species.*

### Every Species Counts

Match the number to the animal group to find out how many of each are found on the list.

A. Mammals	54
B. Birds	124
C. Reptiles	7
D. Amphibians	6
E. Fish	12
F. Insects	11

Answers: A. 12, B. 54, C. 11, D. 7, E. 6, F. 124

### Take a wild guess and fill in the blanks with the name of these Connecticut endangered species.

- The largest animal on Connecticut's endangered species list is the \_\_\_\_\_.
- The \_\_\_\_\_ spends most of its life underground.
- The \_\_\_\_\_ is considered world's fastest bird.
- The \_\_\_\_\_ lives in only a few places in the world and one of these is Connecticut.
- The \_\_\_\_\_ is an orchid on Connecticut's endangered species list.

Answers:

1. leatherback sea turtle, 2. eastern spadefoot toad, 3. peregrine falcon, 4. Puritan tiger beetle, 5. showy lady's slipper

## Spot the Endangered Species

*There are many animals that are becoming very rare due to habitat loss, over hunting, pollution, and many other reasons. Try your hand at locating some of the local endangered species of Connecticut in the word search below.*

W Q Y R E X H B P K G Y G E V K R A L B V N P X Q A F D I W V I V U O E J  
 S Z L G T A B O A U Y D H N H W F B D O Q C T Q N X X H K A J F W B A X J  
 K Z S X X L W E X R U R D G D S L I F K C B K X N B H J W O U T V T W K I  
 J H N U O C M Q R R N P G W T S G I Y H T V R F V I H T S E N S J W K I V  
 V K A N D V T X G B R O R N Y P I E D B I L L E D G R E B E S H B C I U J  
 J W W N I E T X O I W F W G Y J L S G E Q M U A F X B B R R H D O B C A S  
 S J A H J S Y G Y H G I Z L C N H G Y X H I V A B L D W R W D X G V F X E  
 H J M M P P U H S O C Q C X H I G M S U E G T F Z L E Z H S W B T V R H T  
 O W K G E E X H J H V U X Q I L I P A U N N U U M G O W Y K V J U X M J R  
 R G D O L R T U P L A N D S A N D P I P E R I L D Q Q X V D Q X R E C U F  
 T E F X G S I D A D A R W Z E J U U Q B L B C E Z K L P J C K H T S J P H  
 N A R S F P M C H N T P P K X A R O H W Y V S E Y Y C N N D H O L D F X D  
 O S F U U A B G A T P J G S V I U L O R X X N Z U E O A H H R X E E O O H  
 S T Z L N R E H G N N O R T H E R N H A R R I E R Y X C E E Q X X Z N N S  
 E E H M F R R I I K B V Q N J I X D Z A Q Q P P T B K W K L J D A P H M N  
 S R R G E O R Q F H Q I B E C G N X C K I N G R A I L C N F X J T G S C R  
 T N G M A W A L J N R W T J Y A K N N G D U Q I E X E A K D E T D G S F R  
 U S J U H Q T M J N S N Z T B K L E E O L L T L W P B Y C G Y J X B M H H  
 R P G F M X T M K M V N A O E I H J Z D W A T H D E P T X K R S S T O F C  
 G A X C I C L N H H Y W O G T R D R K O H R I O B B B R A M R I S R Z G B  
 E D J L X Y E O C X J N J S O C N D D C U A O F Q T M W P X Z A E A N B D  
 O E T U J A S N O X T B H O P A X E D T I W W C F R P J K Q P A I V N H Z  
 N F W Z Y P N M U F Y K M I E H R E A S D N Y K A T Q B S O J K X L R X Y  
 Y O K W S J A R V H O N Q E U A T E I E R B X Q V C X Q I W H E Q O E V O  
 G O I M S Q K H W S O C N O E S S K D E C C I L E A S T S H R E W R R V O  
 L T F I U I E Q O M U C H G A Y L A T E K G A K S X W U Q Y T F W B M N S  
 P T Y B E R W S M B Z N N E E U E E T F H P W R N B Q M X W N L C M G V M  
 S O V A N Q U O O O I O R L E H T W G R A S S H O P P E R S P A R R O W Y  
 B A Z L K Y C F E M L B D Q D A Y P U R K B B Q A O X A Q S X X R Y K C A  
 U D Z Q A P J P Y H W I G E E J B Z N W K N C N Z D V F T P W T Z E K R Q  
 O W Y Q R N I J P O R Z R S F R E P B Q Z Z V D G X L E A V F H J M N C Q  
 H O E C G N V N L S Y H O T W S U L Y P I R M C C U O A Z T N R R U I A F  
 F C R D I H Y L P P U R I T A N T I G E R B E E T L E Y S M E D Z V T C H  
 H O H X I X E M X J K Y B L D L F L L G K E K C V K V Q L W T S J Q B C I  
 R T A J F Y E K C V O Y I R C V J Z N G W I S D W F C J C Q U O N D C T O  
 X D G S G K Q Q V U Q R Z X K I T R Z Z V Z L U Q O E G J F Y H O W T Y M  
 I S W B J P J G U R T L E A T H E R B A C K S E A T U R T L E R R J T Y O

Least Shrew  
 American Bittern  
 Barn Owl  
 Black Rail  
 Common Moorhen  
 Grasshopper Sparrow

Northern Harrier Hawk  
 King Rail  
 Long Eared Owl  
 Pied Billed Grebe  
 Red Headed Woodpecker  
 Roseate Tern

Sedge Wren  
 Sharp Shinned Hawk  
 Upland Sandpiper  
 Vesper Sparrow  
 Yellow Breasted Chat  
 Bog Turtle

Kemp's Ridley Sea Turtle  
 Leatherback Sea Turtle  
 Timber Rattlesnake  
 Eastern Spadefoot Toad  
 Shortnose Sturgeon  
 Puritan Tiger Beetle