

Art & Conservation

The CT Junior Duck Stamp

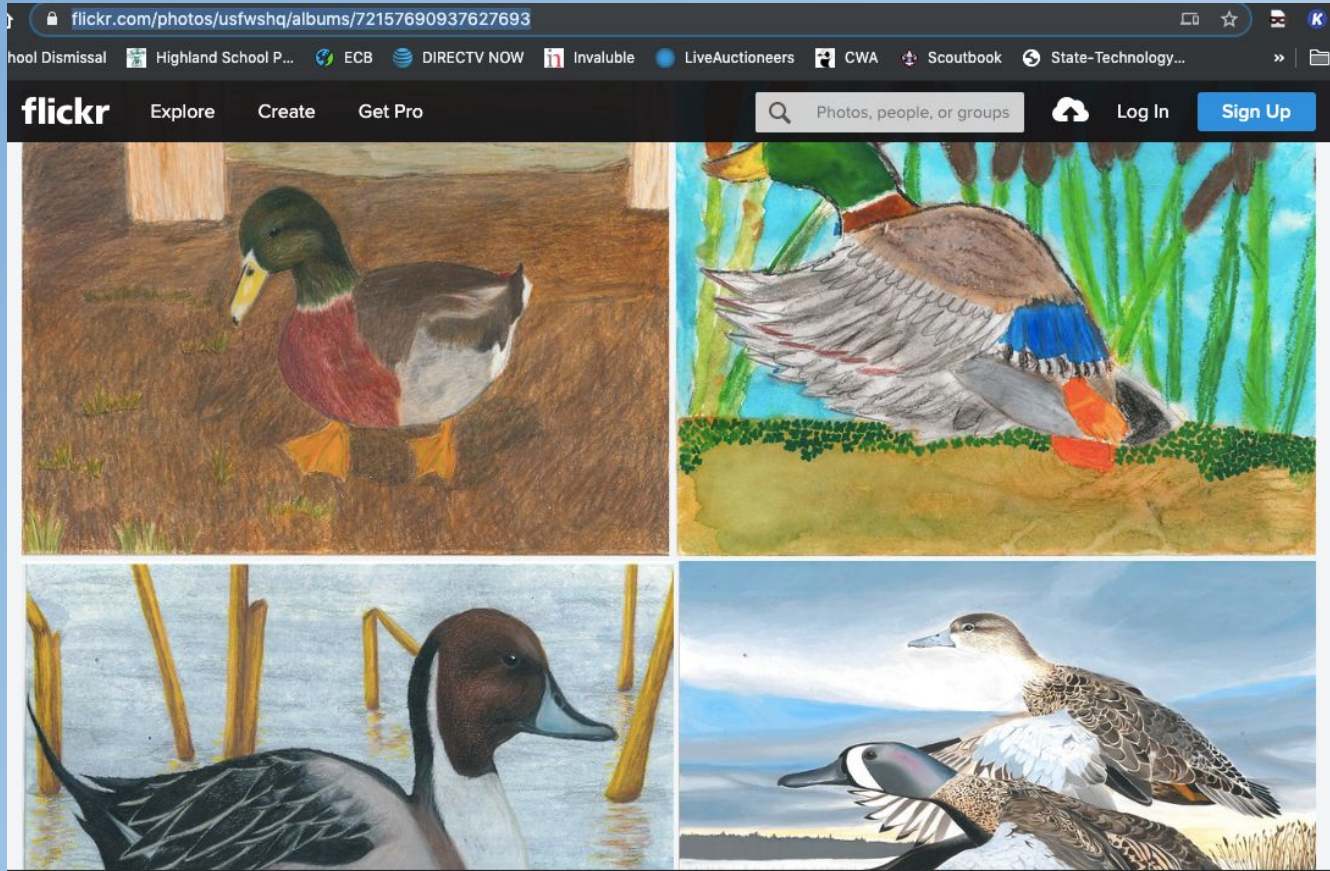
Program



CT Junior Stamp Contest Basics

- All Grade K-12 students are eligible to participate. This includes students attending public, private, or homeschools in the United States and the U.S. Territories.
- Jr. Duck Stamp program integrates art with science. Participants select a species of North American waterfowl, do research on this species and its habitat, then depict their findings through art.

Gallery of Entries: Student Work



Group I:

Grades K-3

Group II:

Grades 4-6

Group III:

Grades 7-9

Group IV:

Grades 10-12

The Junior Duck Stamp Best of Show Winner

WILL be used as the artwork on the
State of CT Duck (Conservation) stamp
moving forward!

CT Junior Stamp Contest Details

Completed artwork must be postmarked by
March 15, 2024 and submitted with an
contest [entry form](#)

“Best of Show” will be submitted to the
Federal Junior Duck Stamp Competition

Technical Requirements for Design and Submission of an Entry:

Failure to follow these and other rules will lead to disqualification of artwork.

- The physical size of submitted artwork must be 9" x 12".
- Entries must be less than ¼" thick.
- Image layout must be horizontal. Image must be a live portrayal of a native North American duck, swan, or goose (refer to eligible species list).
- An entry may be multi-color, black and white, or a single color; it may be rendered in ink, paint, pastel, crayon, or pencil. Techniques may include scratch-board, airbrush, linoleum printing, paper collage, dry brush, crosshatch, pointillism, etc.
- No photography or computer generated art is accepted.
- Design entries must be the contestant's original, hand-illustrated creation and may not be traced or copied from photographs or other artists' works. (See tips for using references.)
- Photographs taken by the student may be used as references in the development of the design. (See tips for using references.)
- No lettering, words, signatures, or initials may appear on the front of the artwork as they may influence judges and can interfere with the final stamp design.
- Entries may not be matted or framed.
- There should be no border around the image.
- Before mailing, please remember to attach (tape) the signed entry form to the back of entry.
- Include completed Reference Form with entry.

NATIONAL CORE ARTS STANDARDS

Dance, Media Arts, Music, Theatre And Visual Arts



What Are The Standards?

[Learn More...](#)

What is the status of state arts standards revision?

[Learn More...](#)



Creating

- Anchor Standard #1. Generate and conceptualize artistic ideas and work.
- Anchor Standard #2. Organize and develop artistic ideas and work.
- Anchor Standard #3. Refine and complete artistic work.



Performing/ Presenting/ Producing

- Anchor Standard #4. Select, analyze and interpret artistic work for presentation.
- Anchor Standard #5. Develop and refine artistic techniques and work for presentation.
- Anchor Standard #6. Convey meaning through the presentation of artistic work.



Responding

- Anchor Standard #7. Perceive and analyze artistic work.
- Anchor Standard #8. Interpret intent and meaning in artistic work.
- Anchor Standard #9. Apply criteria to evaluate artistic work.



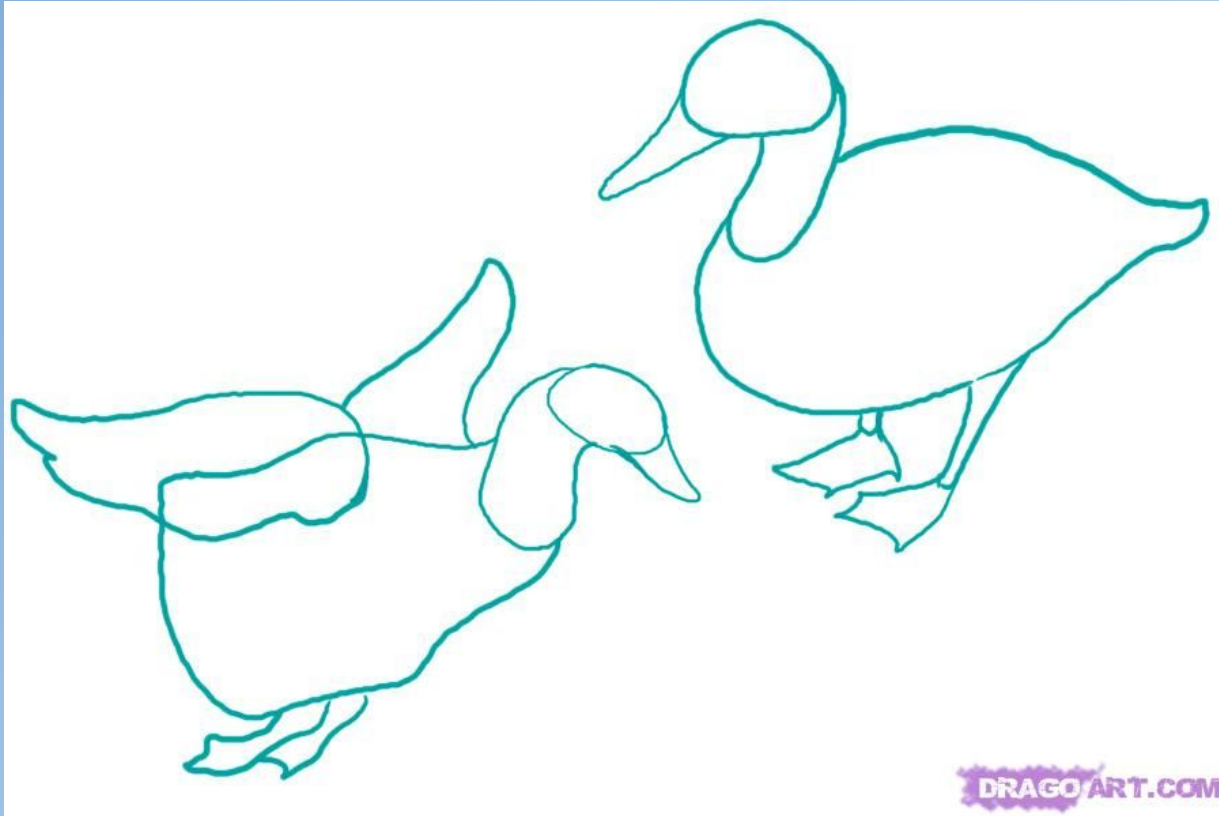
Connecting

- Anchor Standard #10. Synthesize and relate knowledge and personal experiences to make art.
- Anchor Standard #11. Relate artistic ideas and works with societal, cultural and historical context to deepen understanding.

Landscape



Structure/Form



Position

2019-2020 Migratory Bird Hunting and Conservation Stamp

Celebrating our Waterfowl Hunting Heritage

Hunting dogs, duck calls, decoys, and valuable time in the field with friends and family; the heritage and traditions of waterfowl hunting continue to illustrate wildlife conservation.

Artist: Scot Storm, Wood Duck & Decoy ©



If you have any questions, please contact us at 1-800-368-2772.

Medium



Printmaking



Connecticut Waterfowlers Association

State Program Contact: Christopher Samorajczyk at:
(203) 888-0352
or email at csamor16@att.net

Educational Contact: Tom Lewoc:
tlewoc@cheshire.k12.ct.us
Lewoc09@gmail.com