



# West Thompson Dam (North)

(Owned by US Army Corps of Engineers)



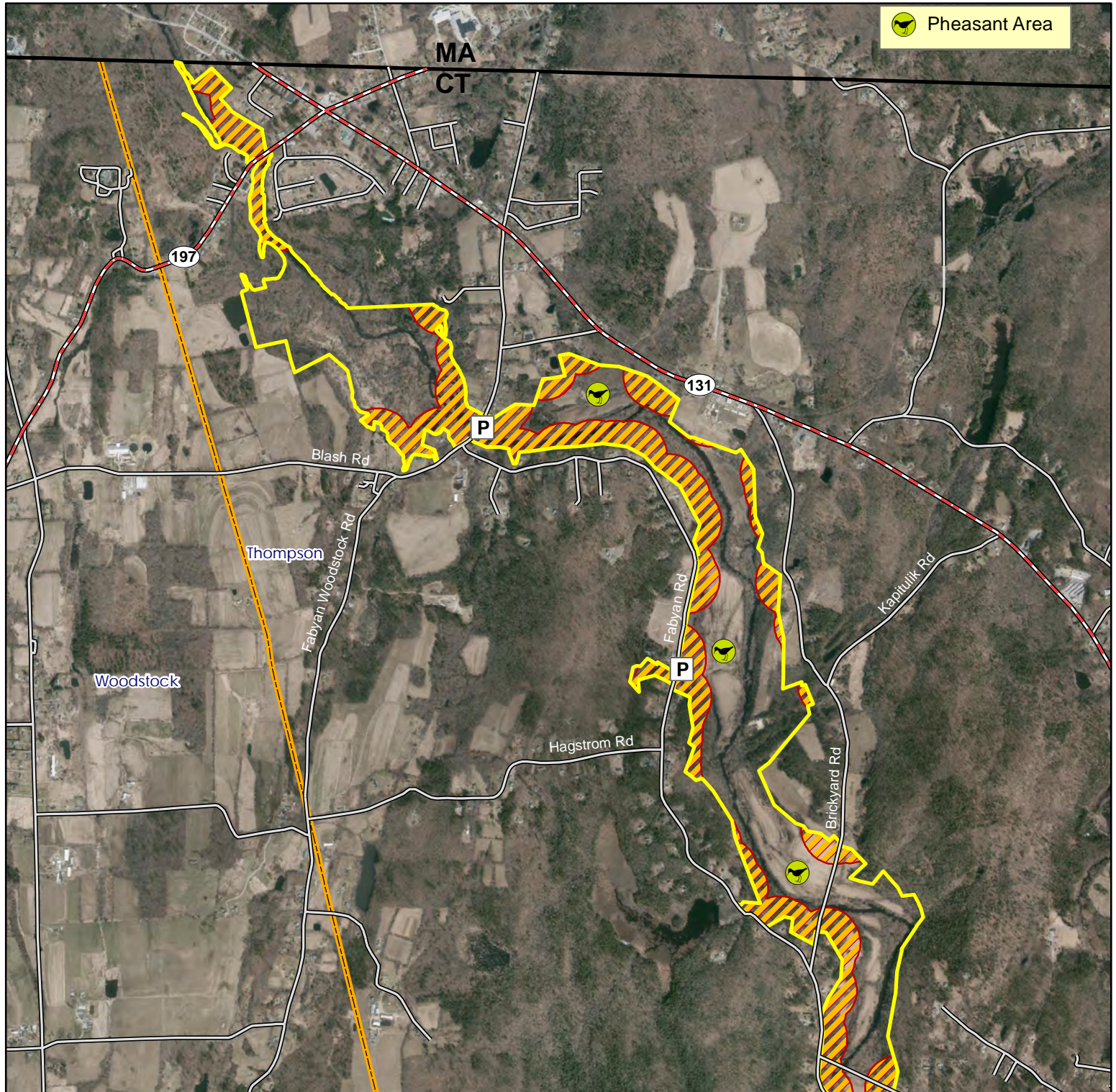
**Location:** Thompson

**Description:** 1773 acres. Open for all forms of hunting. Please obey the closed areas around the dam.

**Access:** Parking areas along Fabyan Road and Ravenelle Road in Thompson.

**Note:** This map depicts an approximation of property boundaries. Please obey all postings.

**Symbols:** Approximate Boundary 500ft Firearms Restriction Zone Closed to Hunting Parking Area



Map Date: May 2024; Ortho 2019

2,100 1,050 0 2,100 Feet

