



# Quinebaug River WMA

Overview (map 1 of 7)

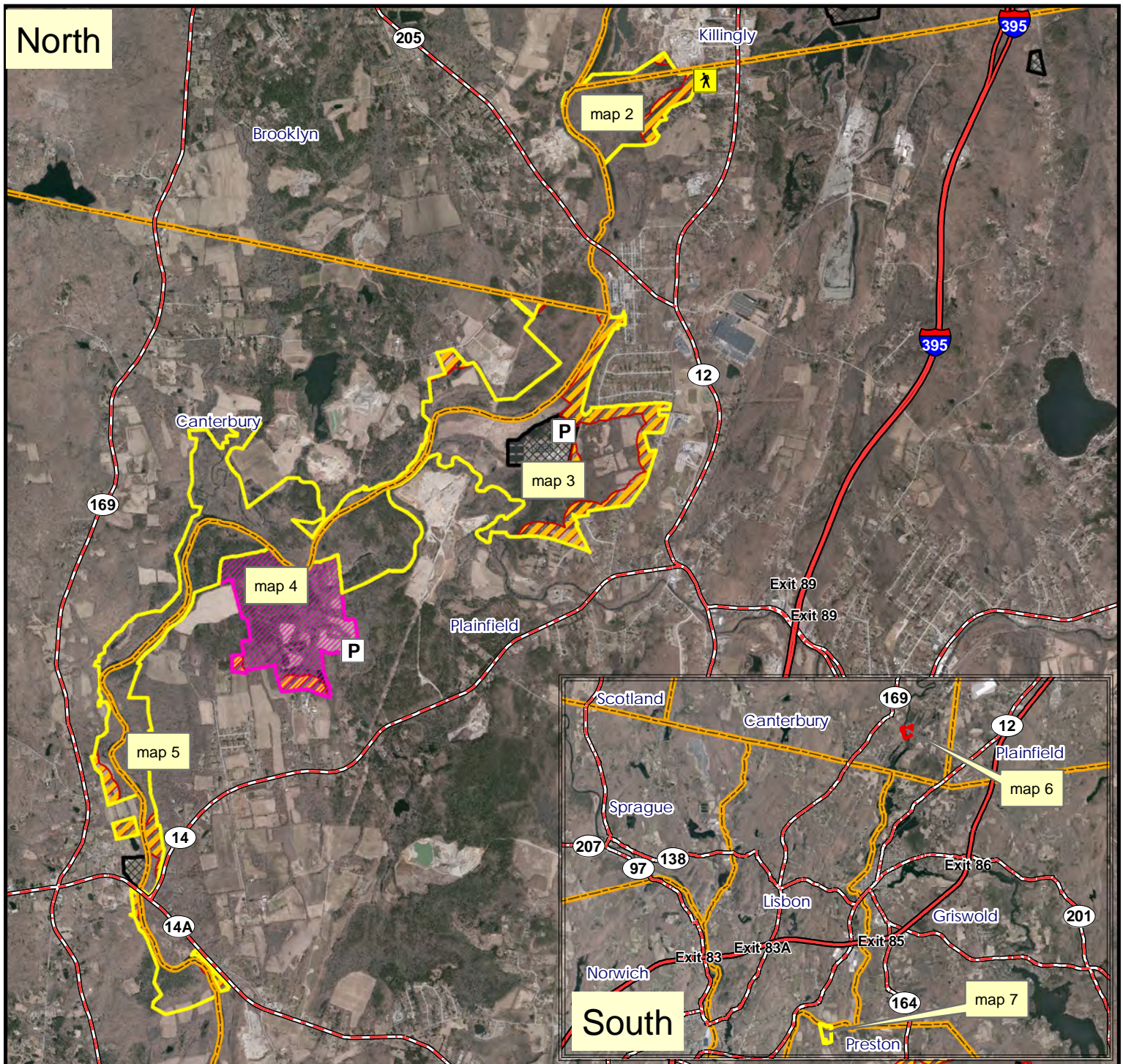


**Location:** Canterbury, Killingly, Plainfield, Preston

**Description:** 1430 acres total; Open for small game, waterfowl, spring and fall firearms turkey, fall archery deer and turkey, muzzleloader deer and no-lottery shotgun deer. Quinebaug Fish Hatchery Area is stocked in the fall with pheasants. Aspinook Pond Parcel is open to waterfowl, archery deer and archery fall turkey hunting only.

**Note:** This map depicts an approximation of property boundaries. Please obey all postings.

**Symbols:** Approximate Boundary Sugarbrook Field Trial Area Aspinook Pond Parcel 500ft Firearms Restriction Zones Closed to Hunting Parking Area



Map Date: February 2024; Ortho 2019

4,100 2,050 0 4,100 Feet





# Quinebaug River WMA

map 2 of 7



**Location:** Killingly, Plainfield

**Access:** Parking at northern end of Basley Road.

**Description:** 146 acres of 1430 total acres; Open for all forms of hunting. Please see CT Hunting Guide for more information.

**Note:** This map depicts an approximation of property boundaries. Please obey all postings.

**Symbols:** Approximate Boundary 500ft Firearms Restriction Zones Access Point



Map Date: January 2022; Ortho 2019

820 410 0 820 Feet





# Quinebaug River WMA

Quinebaug Fish Hatchery

Page 3 of 7



**Location:** Canterbury, Plainfield

**Access:** I-395 north or south to exit 89 (Rte 14); Go west on Rte 14 through Central Village to a light; turn right and go about 1/2 mile; bear left at fork (stay on Rte 14) and go about 1/2 mile; turn right into Cady Lane to the hatchery.

**Description:** 552 acres of 1430 total acres. Open to all forms of hunting. Please see CT Hunting Guide for more information.

**Note:** This map depicts an approximation of property boundaries. Please obey all postings.

**Symbols:** Approximate Boundary 500ft Firearms Restriction Zones Closed to Hunting Parking Area Pheasant Area



Map Date: January 2022; Ortho 2019

1,000 500 0 1,000 Feet





# Quinebaug River WMA

map 4 of 7



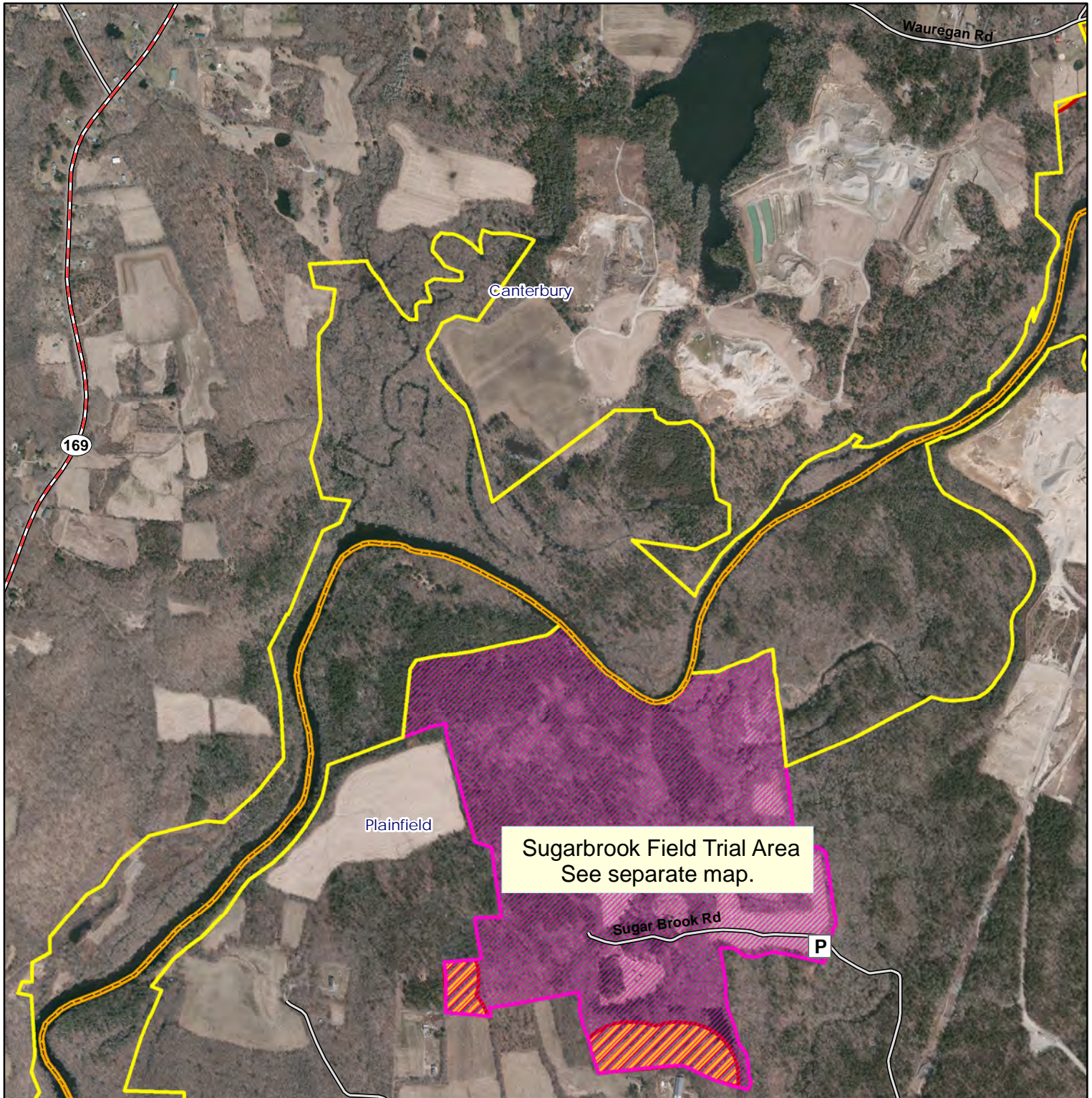
**Location:** Canterbury, Plainfield

**Access:** Parking along Sugar Brook Rd. to Sugarbrook Field Trial Area.

**Description:** 450 acres of 1,430 total acres. Open to all forms of hunting. Please see CT Hunting Guide for more information.

**Note:** This map depicts an approximation of property boundaries. Please obey all postings.

**Symbols:** Approximate Boundary Sugarbrook Field Trial Area 500ft Firearms Restriction Zones Parking Area



Map Date: January 2022; Ortho 2019

1,500 750 0 1,500 Feet







# Quinebaug River WMA; Sugarbrook Field Trial Area



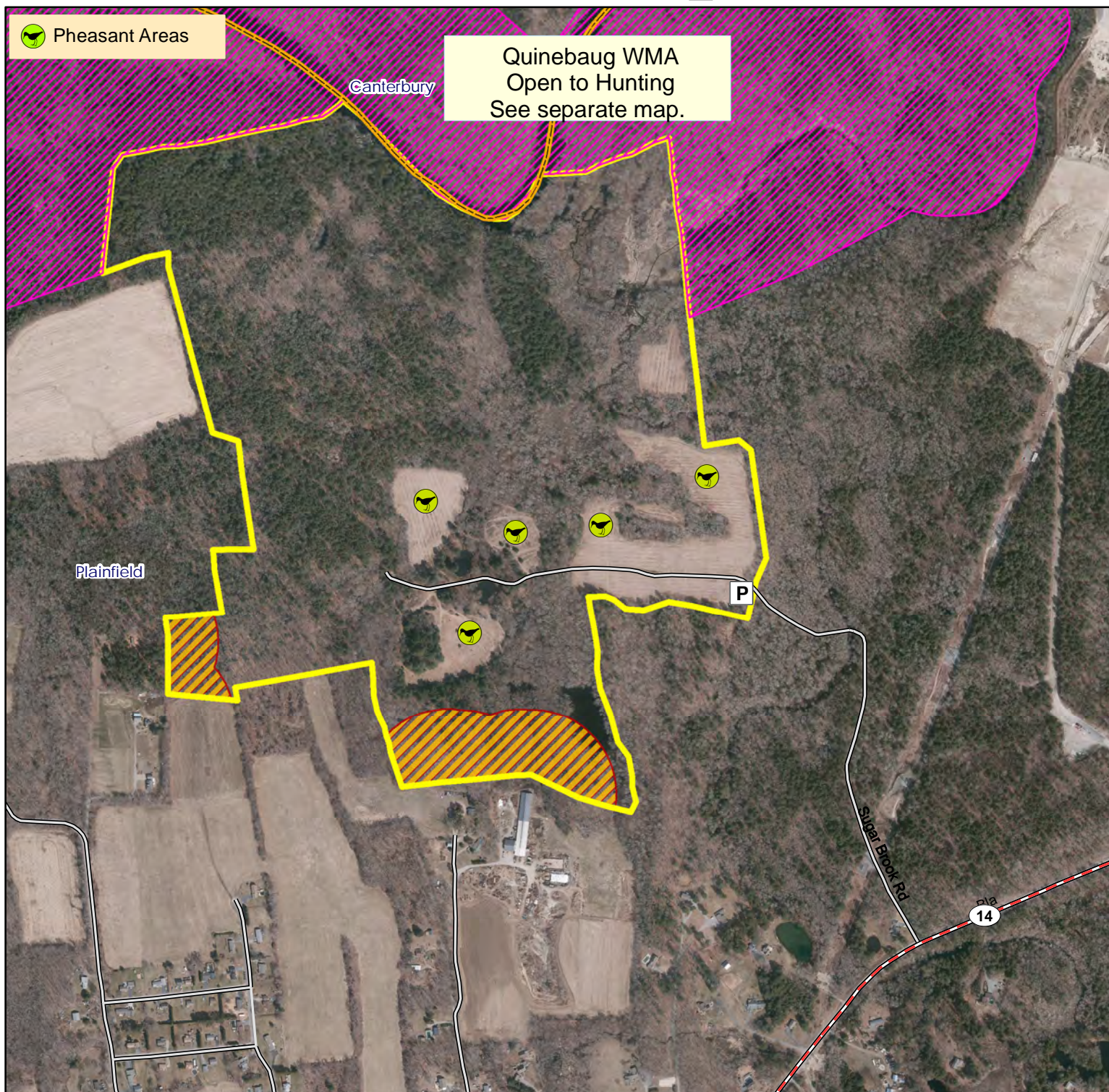
**Location:** Plainfield

**Description:** 192 acres. Open to all forms of regulated hunting. **This is a Field Trial Area that will be closed to hunting during scheduled field trial events.** Please visit <https://portal.ct.gov/DEEP/Hunting/Field-Trial-Dates> for scheduled field trial dates.

**Access:** Located 2 miles east of Rt. 14/Rt. 14A junction. Parking area at end of Sugar Brook Rd.

**Note:** This map depicts an approximation of property boundaries. Please obey all postings.

**Symbols:** Approximate Boundary 500ft Firearms Restriction Zones Parking Area Quinebaug Wildlife Area



Map Date: September 2023; Ortho 2019

940 470 0 940 Feet





# Quinebaug River WMA

map 5 of 7

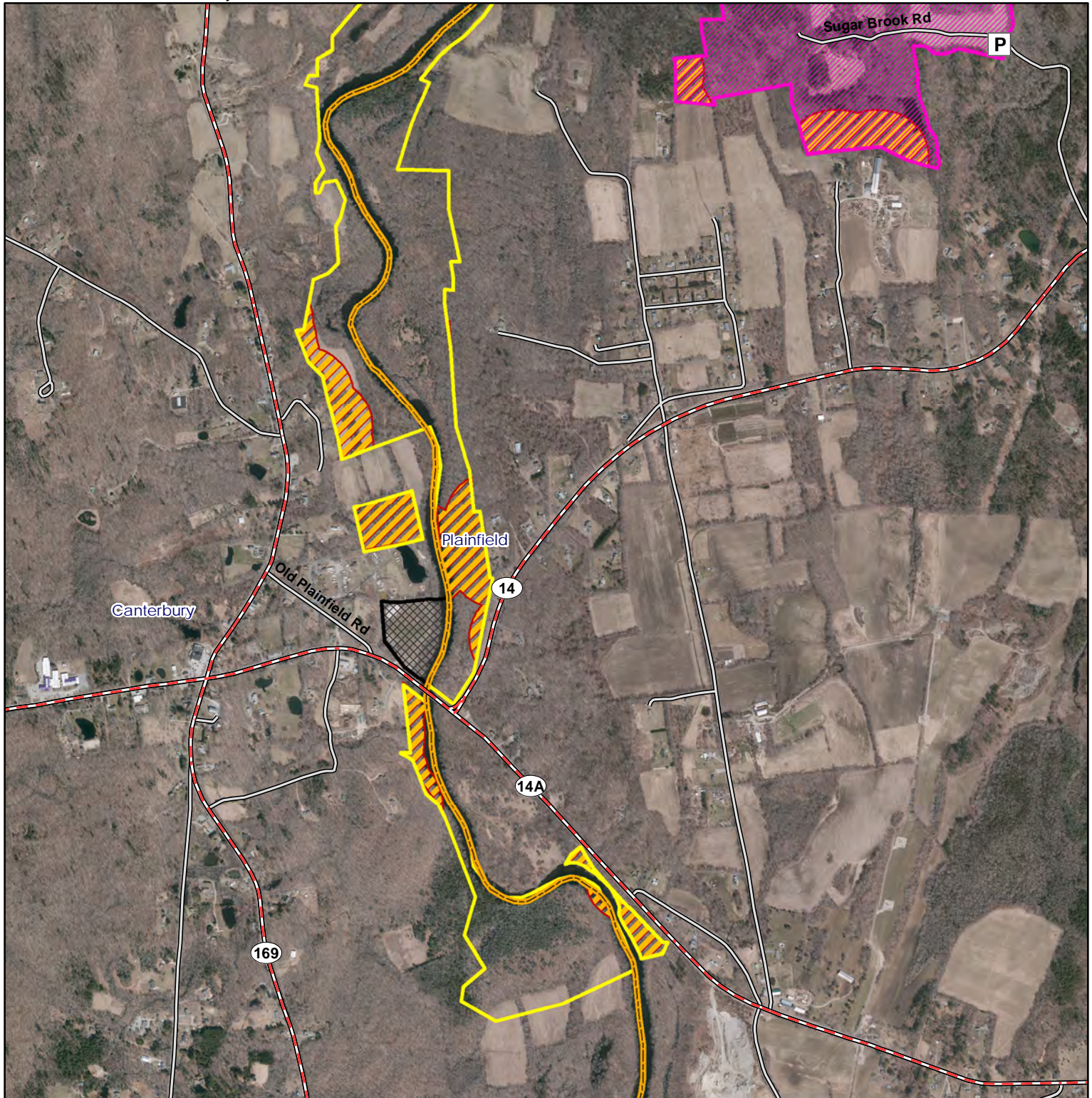


**Location:** Canterbury, Plainfield

**Description:** 174 acres of 1,430 total acres. Open to all forms of hunting. Please see CT Hunting Guide for more information.

**Note:** This map depicts an approximation of property boundaries. Please obey all postings.

**Symbols:** Approximate Boundary 500ft Firearms Restriction Zones Closed to Hunting Sugarbrook Field Trial Area Parking Area



Map Date: February 2024; Ortho 2019

1,600 800 0 1,600 Feet





# Quinebaug River WMA

## Aspinook Pond (map 6 of 7)



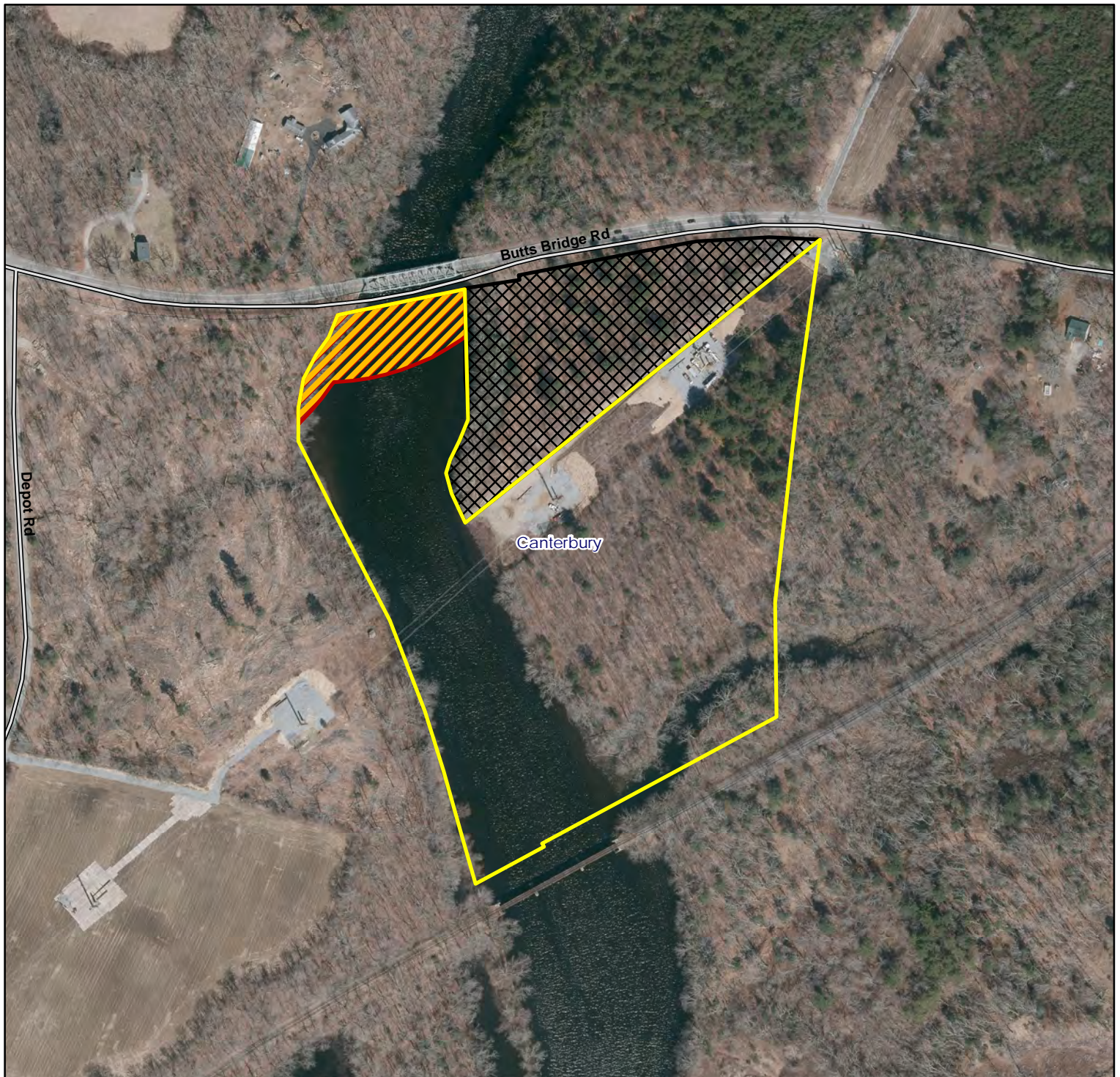
**Location:** Canterbury

**Access:** Parking along Butts Bridge Road.

**Description:** 24 acres of 1430 total acres. Open to fall archery deer/turkey only and also open to waterfowl hunting. Please see the CT Hunting Guide for more information.

**Note:** This map depicts an approximation of property boundaries. Please obey all postings.

**Symbols:**  Approximate Boundary  500ft Firearms Restriction Zones  Closed to Hunting



Map Date: January 2022; Ortho 2019

380 190 0 380 Feet







# Quinebaug River WMA

Map 7 of 7



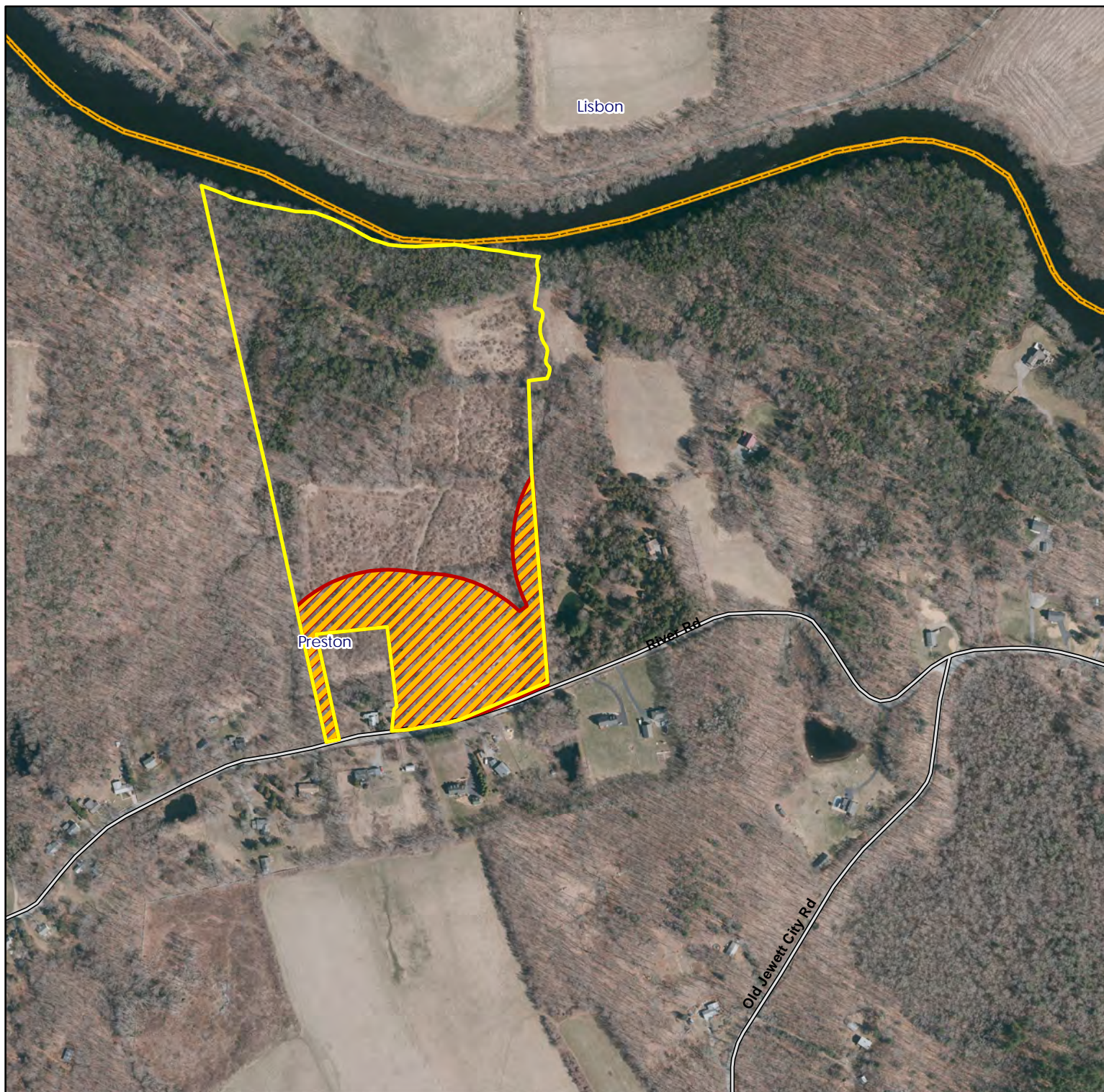
**Location:** Preston

**Access:** Roadside parking on River Road

**Description:** 40 acres of 1430 total acres, a mixture of old field and upland softwood/hardwood forests. Open for all forms of hunting. Please see CT Hunting Guide for more information.

**Note:** This map depicts an approximation of property boundaries. Please obey all postings.

**Symbols:**  Approximate Boundary  500Ft Firearms Restriction Zones



Map Date: January 2022; Ortho 2019

560 280 0 560 Feet

