



# Bishop Swamp WMA

## Overview (Page 1 of 3)



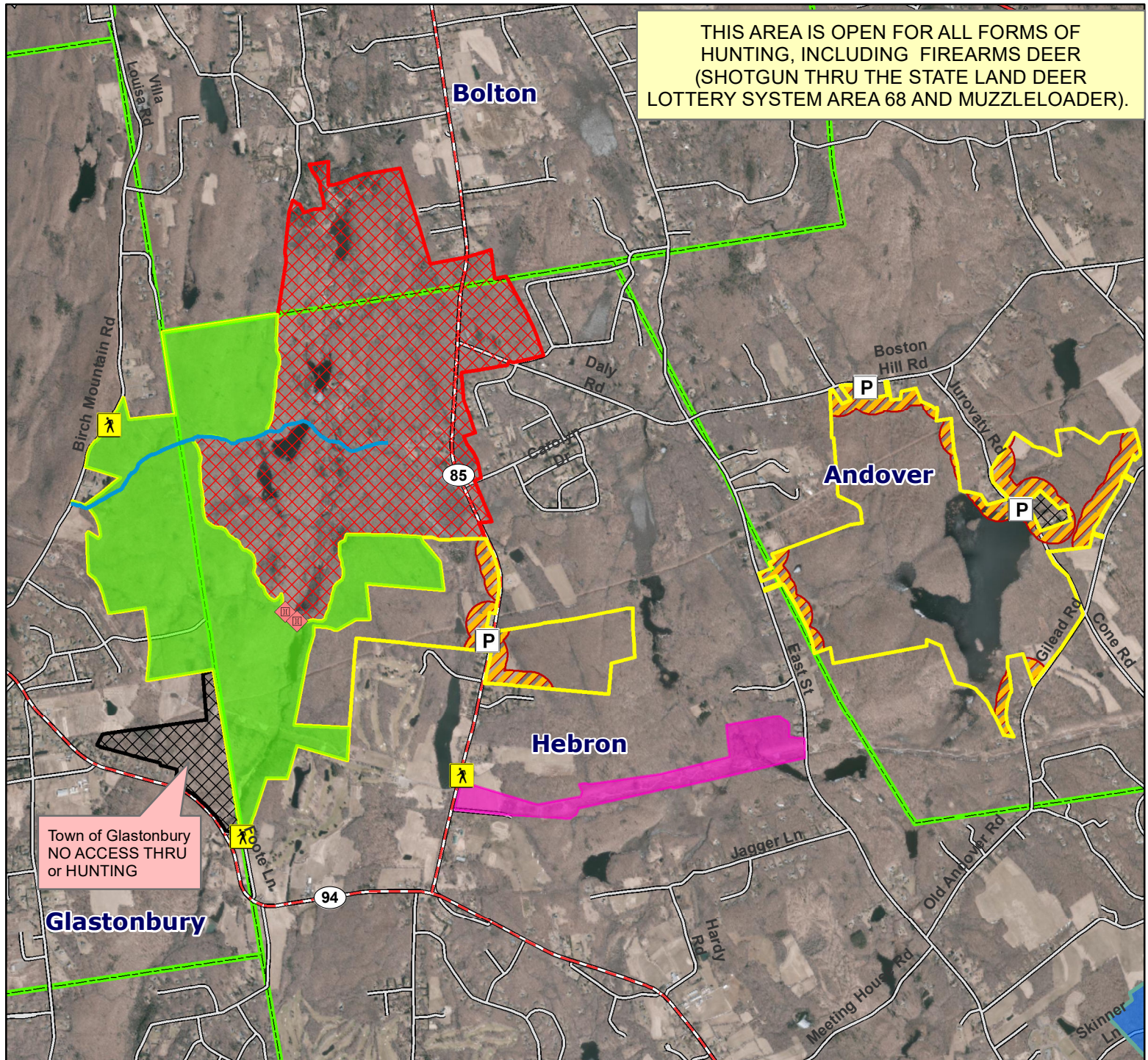
**Location:** Andover and Hebron

**Description:** 1035 acres available for hunting. Please see box below for more information on available hunting.

**Access:** Parking area off of Boston Hill Rd., at the car-top boat launch off on Jurovaty Rd. and in the designated parking area on the west side of Route 85 (239 North St.). **NO HUNTING OR HUNTING ACCESS THRU GAY CITY STATE PARK.**

**Note:** This map depicts an approximation of property boundaries. Please obey all postings.

- Symbols:**
- |                              |                                   |                   |                               |                                  |
|------------------------------|-----------------------------------|-------------------|-------------------------------|----------------------------------|
| Approximate Boundary         | 500 ft Firearms Restriction Zones | Closed to Hunting | Gay City SP Closed to Hunting | Meshomasic SF See Other Maps     |
| Hebron PR Area See Other Map | Salmon River SF See Other Maps    | Parking Area      | Access Point                  | Foot Bridge                      |
|                              |                                   |                   |                               | Gay City Trail (CFPA Blue Trail) |



Map Date: March 2023; Ortho 2019

3,500 1,750 0 3,500 Feet





# Bishop Swamp WMA

## Map 2 of 3



**Location:** Andover and Hebron

**Description:** 752 of 1035 acres available for hunting. This area is open for all forms of hunting, including firearms deer (shotgun thru the State Land Deer Lottery System Area 68 and muzzleloader).

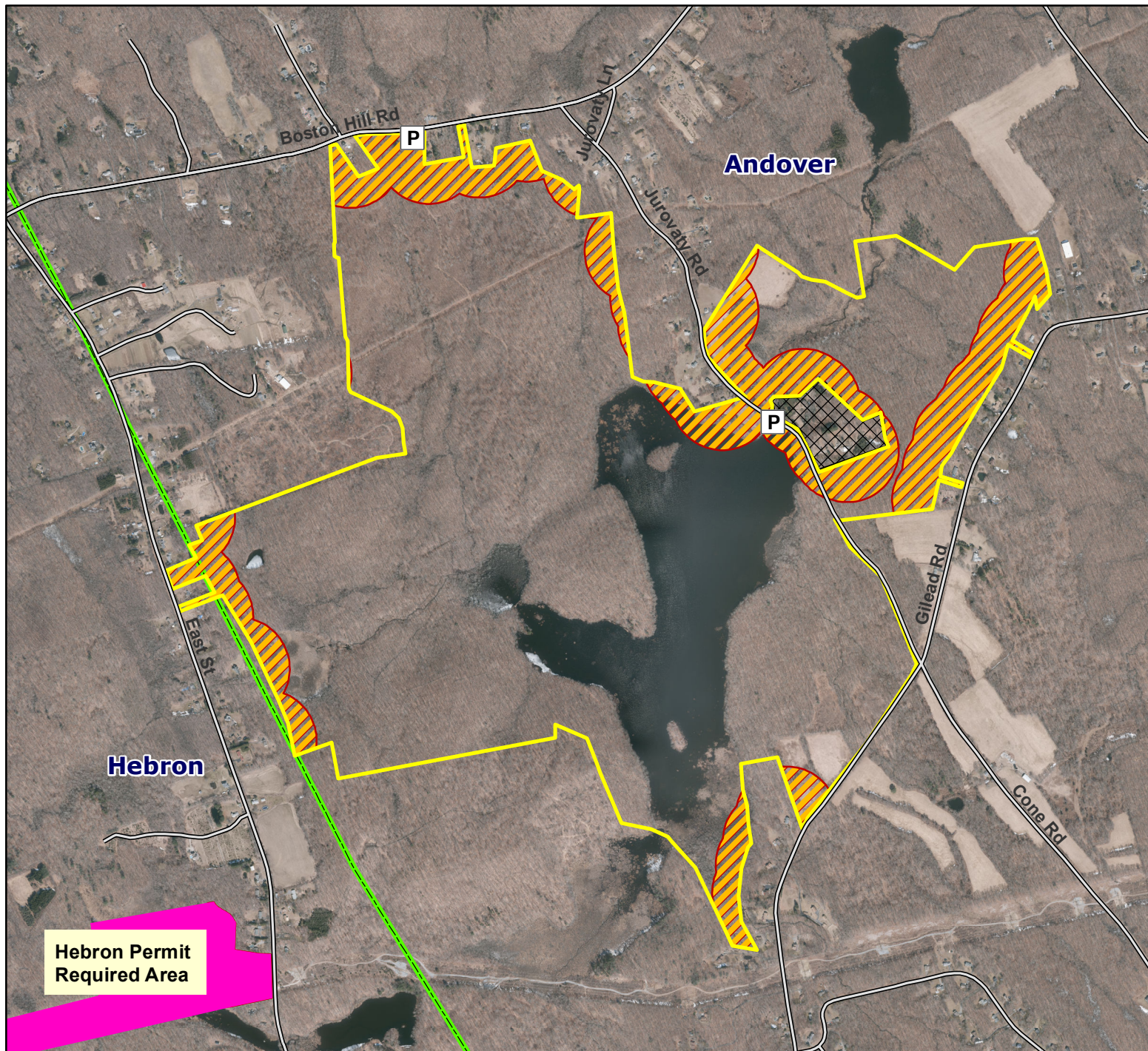
**Access:** Parking areas are located off of Boston Hill Rd. and at the Car-top boat launch off on Jurovaty Rd.

**Note:** This map depicts an approximation of property boundaries. Please obey all postings.

Approximate Boundary 500 ft Firearms Restriction Zones Private Land - NO TRESPASSING

**Symbols:**

Hebron Permit Required Area Parking Area



Map Date: March 2023; Ortho 2019

1,500 750 0 1,500 Feet







# Bishop Swamp WMA

Page 3 of 3



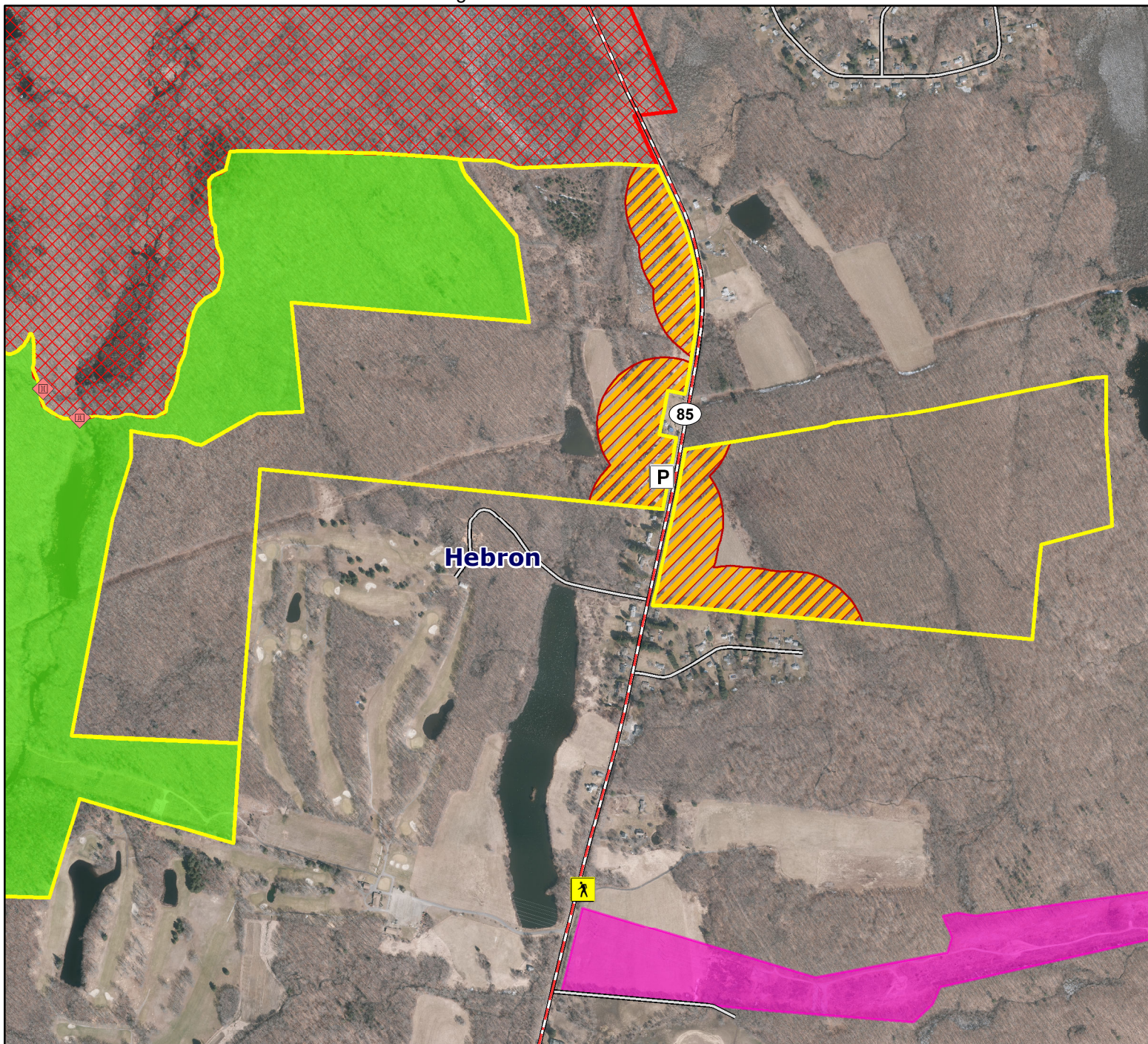
**Location:** Hebron

**Description:** 283 of 1035 acres available for hunting. This area is open for all forms of hunting, including firearms deer (shotgun thru the State Land Deer Lottery System Area 68 and muzzleloader).

**Access:** Parking is only in the designated area on the west side of Route 85 (239 North St.). NO HUNTING OR HUNTING ACCESS THRU GAY CITY STATE PARK.

**Note:** This map depicts an approximation of property boundaries. Please obey all postings.

- Symbols:**
- |                      |                                   |                               |                              |                              |
|----------------------|-----------------------------------|-------------------------------|------------------------------|------------------------------|
| Approximate Boundary | 500 ft Firearms Restriction Zones | Gay City SP Closed to Hunting | Meshomasic SF See Other Maps | Hebron PR Area See Other Map |
| Parking Area         | Access Point                      | Foot Bridge                   |                              |                              |



Map Date: March 2023; Ortho 2019

1,100 550 0 1,100 Feet