



# Bigelow Hollow State Park



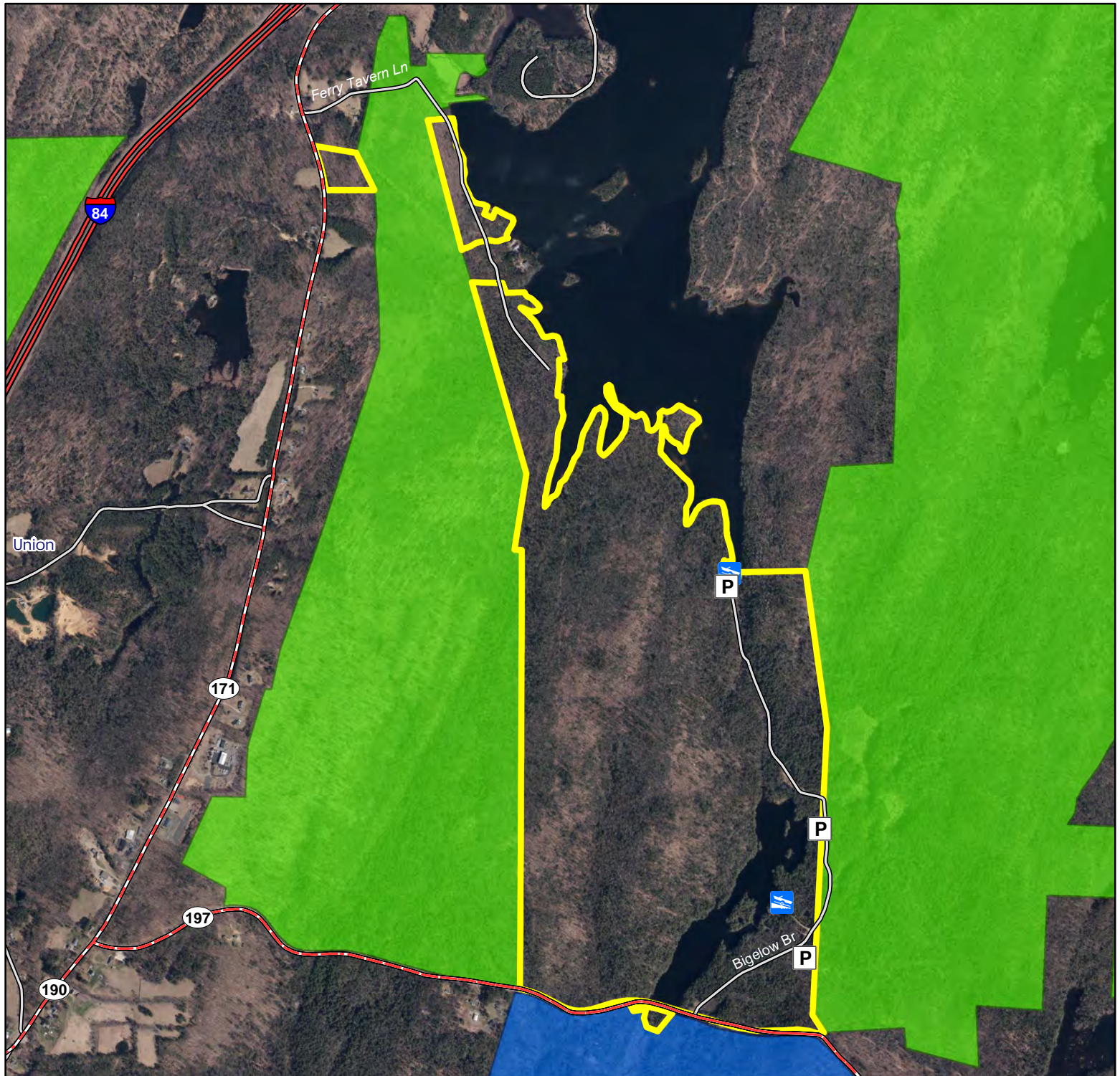
**Location:** Union

**Description:** 515 acres. Open for archery deer and fall archery turkey hunting only. Contiguous with Nipmuck State Forest to the east and west, and Yale-Myers Forest to the south.

**Access:** Parking locations and boat launches are on Bigelow Bridge off of Rt. 197 (Bigelow Hollow Road).

**Note:** This map depicts an approximation of property boundaries. Please obey all postings.

**Symbols:** Approximate Boundary Nipmuck State Forest Yale-Myers Forest Parking Area Boat Launch



Map Date: June 2025; Ortho 2023

1,400 700 0 1,400 Feet

