



# Quinnipiac River State Park



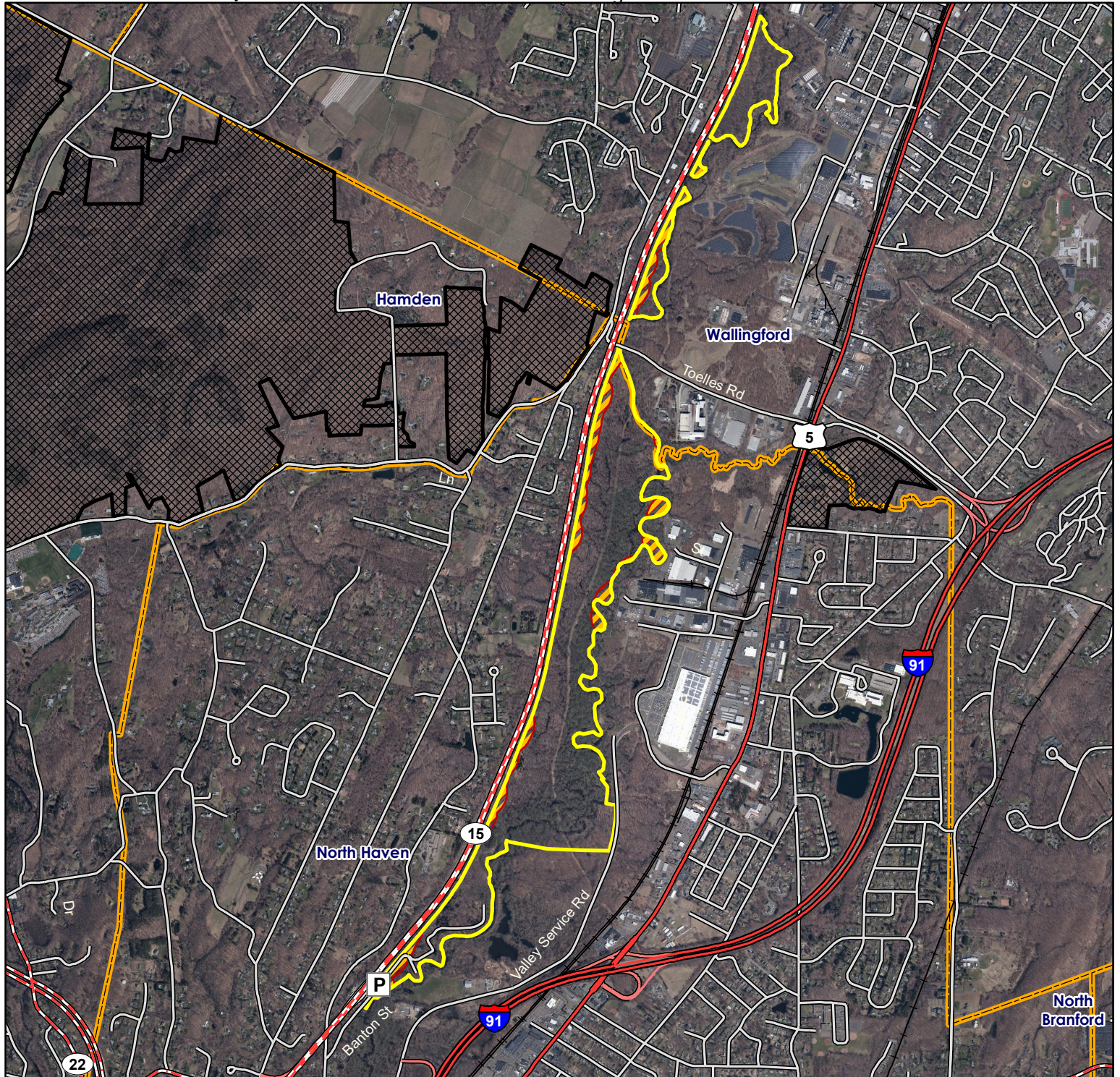
Location: North Haven and Wallingford

Description: 346 acres; This area is open to archery deer hunting, no firearms deer hunting allowed. Also open to firearms/archery small game, waterfowl, firearms/archery spring and fall turkey hunting.

Access: From Route 15, to State Street, to Banton Street parking is at the end of Banton Street. Access from the highway is prohibited. Access also available off of Valley Service Road

Note: This map depicts an approximation of property boundaries. Please obey all postings.

**Symbols:** Approximate Boundary 500ft Firearms Restriction Zones Area Closed to Hunting Parking Area



Map Date: September 2025; Ortho 2023

3,100 1,550 0 3,100 Feet