



# Nathan Hale State Forest

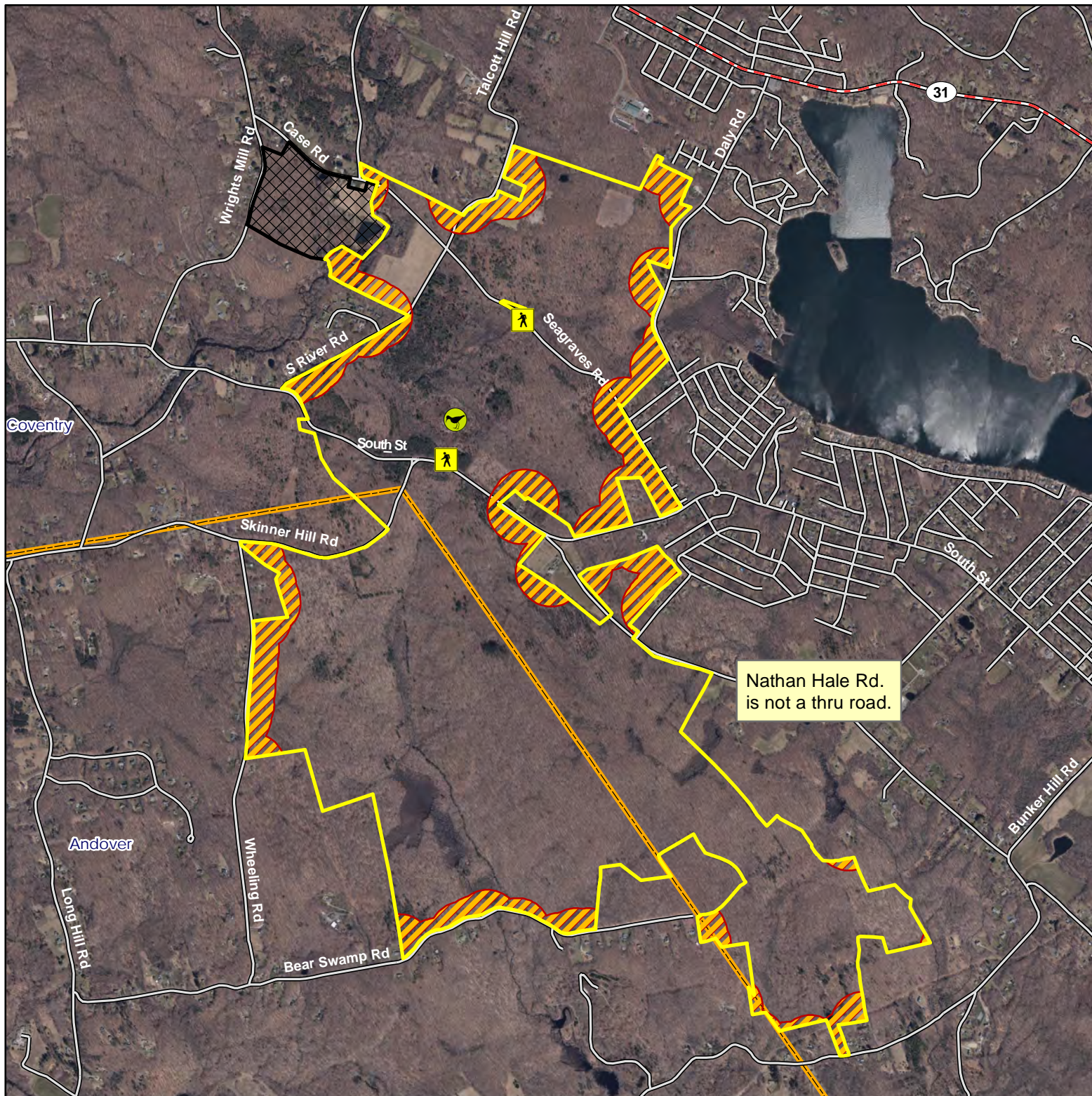


**Location:** Coventry and Andover

**Description:** 1,560 acres; mixed hardwoods, coniferous plantations, old fields, wetlands and grasslands. Open for small game, waterfowl, pheasant, turkey and deer hunting. See the Connecticut Hunting and Trapping Guide for more information.

**Note:** This map depicts an approximation of property boundaries. Please obey all postings.

**Symbols:** Approximate Boundary 500ft Firearm Restriction Zones Closed to Hunting Access Point Pheasant Area



Map Date: October 2024; Ortho 2023

2,300 1,150 0 2,300 Feet



State of Connecticut - Department of Energy & Environmental Protection - 79 Elm St. - Hartford, CT 06106 - [www.ct.gov/deep](http://www.ct.gov/deep)