



# Natchaug State Forest Overview

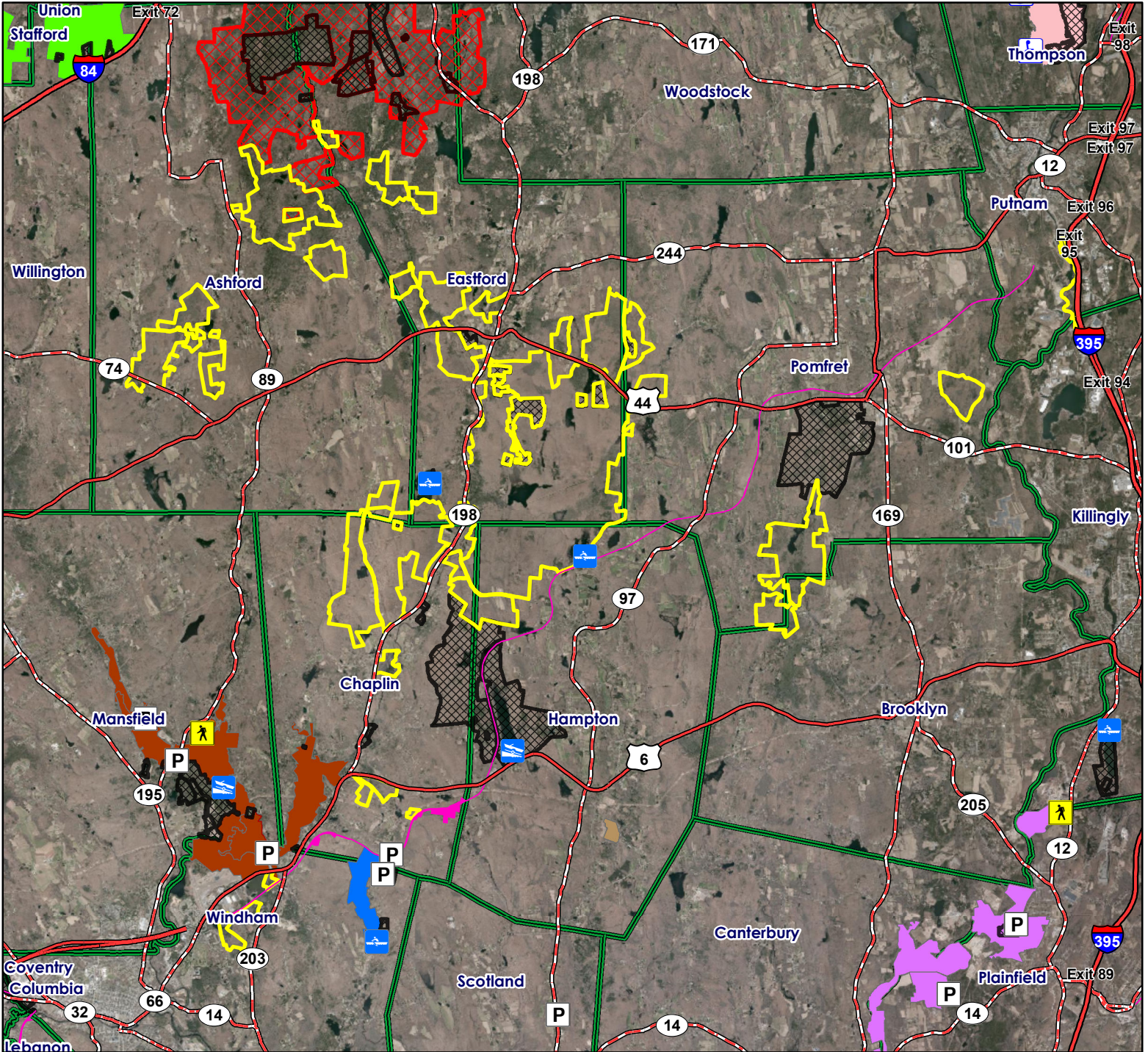


**Location:** Ashford, Eastford, Pomfret, Putnam, Brooklyn, Hampton, Chaplin and Mansfield.

**Description:** 12,596 acres. Please see the CT Hunting and Trapping Guide for more information.

**Note:** This map depicts an approximation of property boundaries. Please obey all postings.

- Symbols:**
- Approximate Boundary
  - Closed to Hunting
  - Nipmuck SF
  - Yale-Myers Forest
  - West Thompson Dam
  - Beaver Brook SP
  - Quinebaug WMA
  - Little River WMA
  - Airline Trail SP
  - Mansfield Hollow State-Leased Areas
  - Parking Area
  - Handicapped Parking Area
  - Access Point
  - Car Top Boat Launch
  - Trailered Boat Launch



Map Date: Jan. 2022; Ortho 2019

13,000 6,500 0 13,000 Feet







# Natchaug State Forest

## Ashford

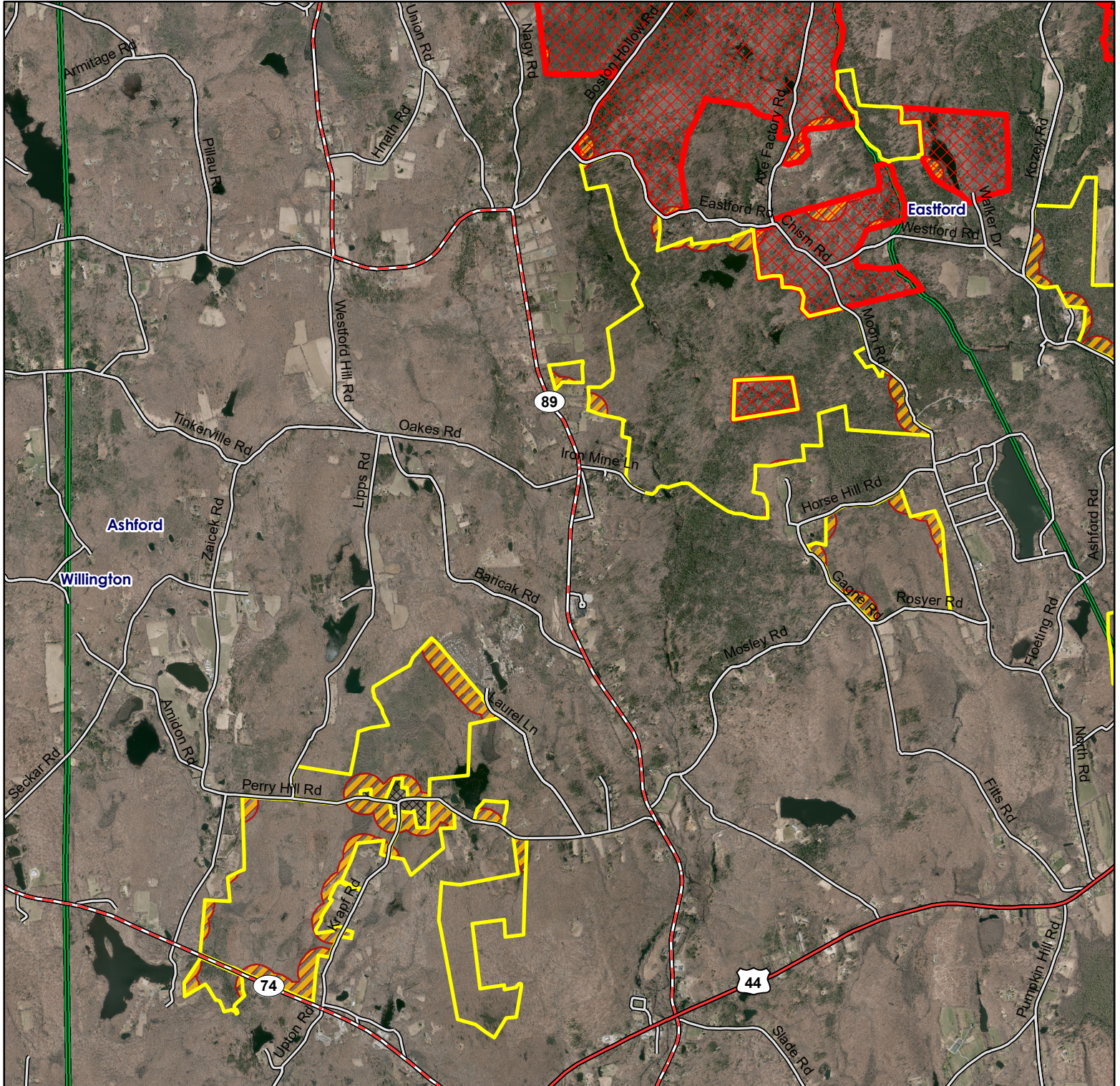


**Location:** Ashford and Eastford

**Description:** 12,596 acres total, approximately 2,246 acres in Ashford. Open to all forms of hunting. Please see the CT Hunting and Trapping Guide for more information.

**Note:** This map depicts an approximation of property boundaries. Please obey all postings.

**Symbols:** Approximate Boundary Closed to Hunting 500ft Firearms Restriction Zones Yale-Myers Forest Permit Required



Map Date: Dec. 2021; Ortho 2019

3,750 1,875 0 3,750 Feet







# Natchaug State Forest

## Eastford - North

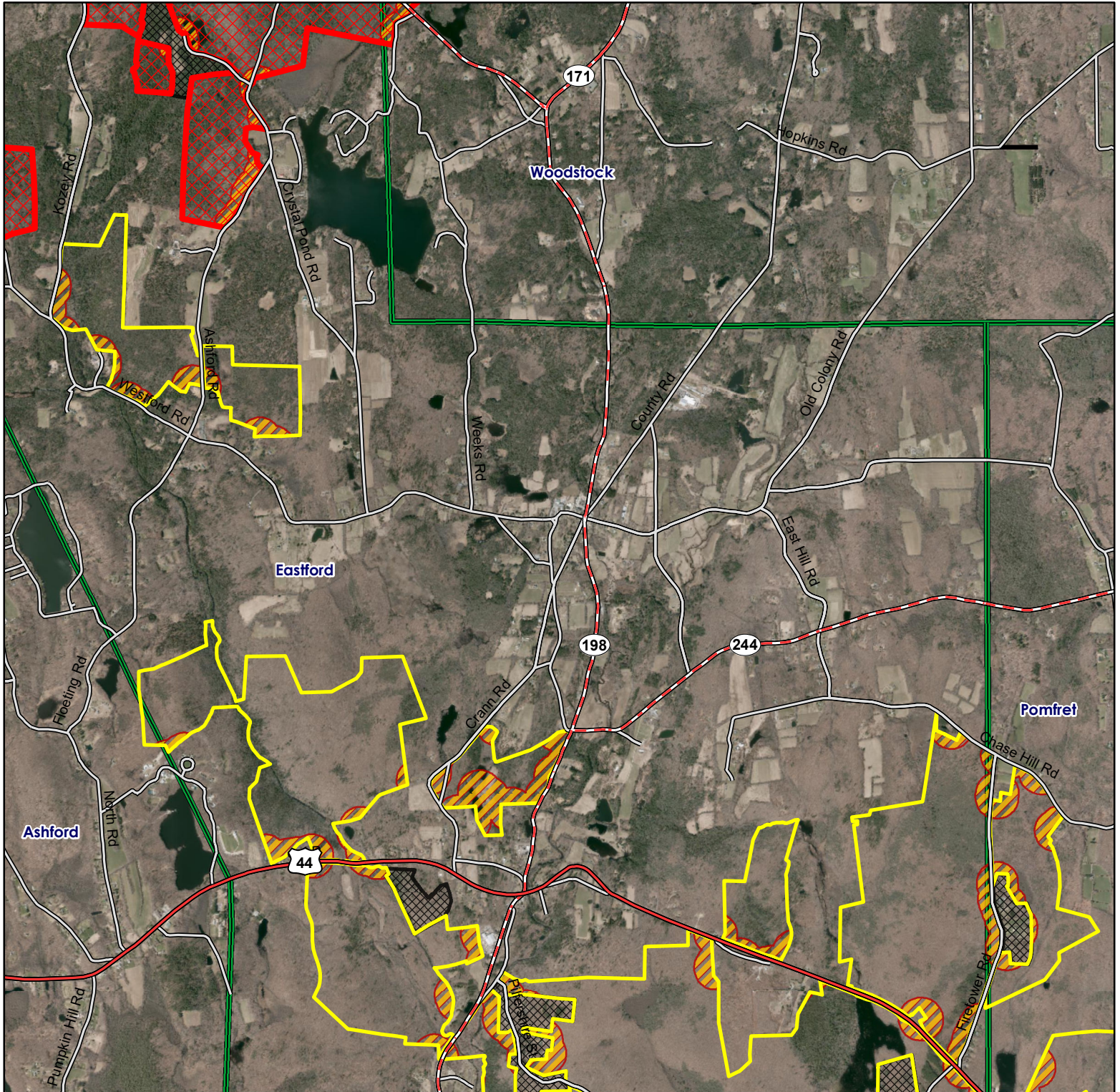


**Location:** Eastford and Pomfret

**Description:** 12,596 acres total, approximately 2,196 acres in Eastford North. Open to all forms of hunting. Please see the CT Hunting and Trapping Guide for more information

**Note:** This map depicts an approximation of property boundaries. Please obey all postings.

**Symbols:** Approximate Boundary Closed to Hunting 500ft Firearms Restriction Zones Yale-Myers Forest Permit Required



Map Date: Dec. 2021; Ortho 2019







# Natchaug State Forest

## Eastford - South

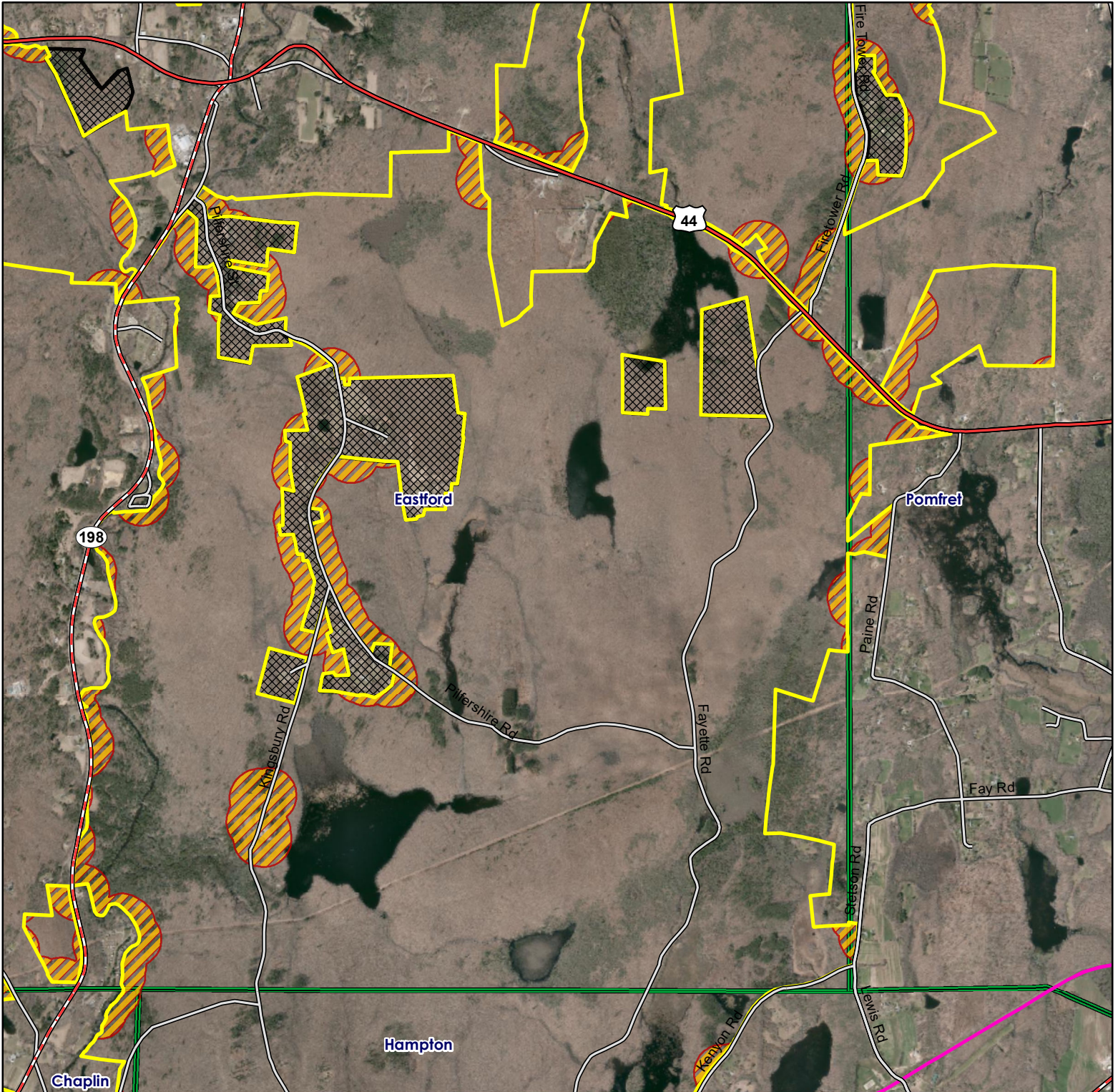


**Location:** Eastford and Pomfret

**Description:** 12,596 acres total, approximately 3,986 acres in Eastford South. Open to all forms of hunting. Please see the CT Hunting and Trapping Guide for more information

**Note:** This map depicts an approximation of property boundaries. Please obey all postings.

**Symbols:** Approximate Boundary Closed to Hunting 500ft Firearms Restriction Zones Airline Trail SP



Map Date: Dec 2021; Ortho 2019

2,750 1,375 0 2,750 Feet







# Natchaug State Forest

## Hampton



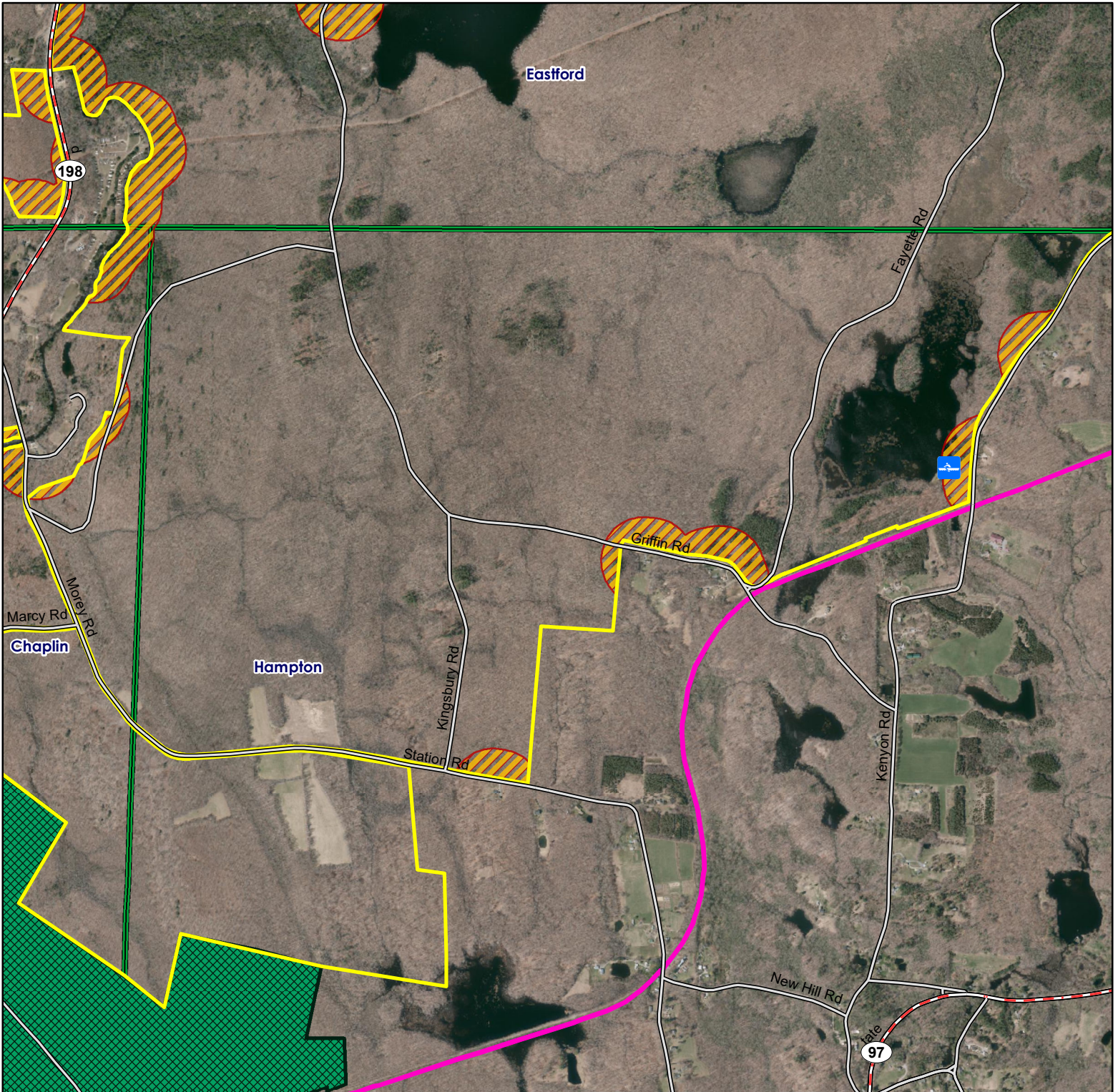
**Location:** Hampton, Chaplin and Eastford

**Description:** 12,596 acres total, approximately 1,490 acres in Hampton. Open to all forms of hunting. Please see the CT Hunting and Trapping Guide for more information

**Note:** This map depicts an approximation of property boundaries. Please obey all postings.

**Symbols:**

- Approximate Boundary
- 500ft Firearms Restriction Zones
- James L. Goodwin SF; Closed to Hunting
- Airline Trail SP
- ↖ Car Top Boat Launch



Map Date: Jan 2022; Ortho 2019

1,800 900 0 1,800 Feet







# Natchaug State Forest

## Chaplin - North

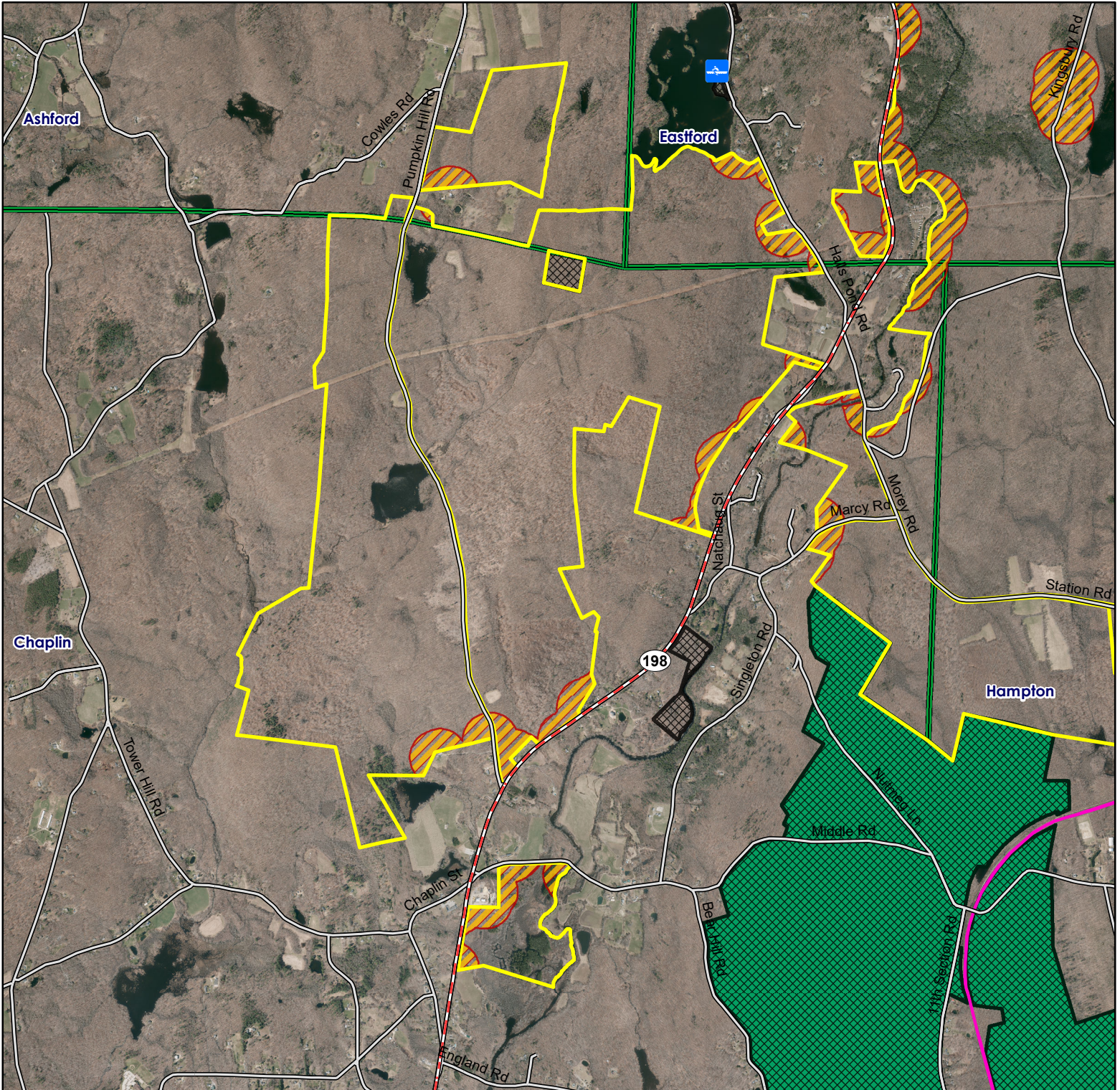


**Location:** Chaplin, Ashford, Eastford and Hampton

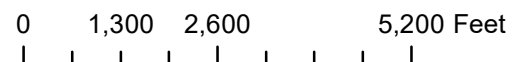
**Description:** 12,596 acres total, approximately 1,670 acres in Chaplin. Open to all forms hunting. Please see the CT Hunting and Trapping Guide for more information.

**Note:** This map depicts an approximation of property boundaries. Please obey all postings.

**Symbols:** Approximate Boundary 500ft Firearms Restriction Zones James L. Goodwin SF; Closed to Hunting Airline Trail SP Closed to Hunting Car Top Boat Launch



Map Date: Jan. 2022; Ortho 2019







# Natchaug State Forest

## Chaplin - South

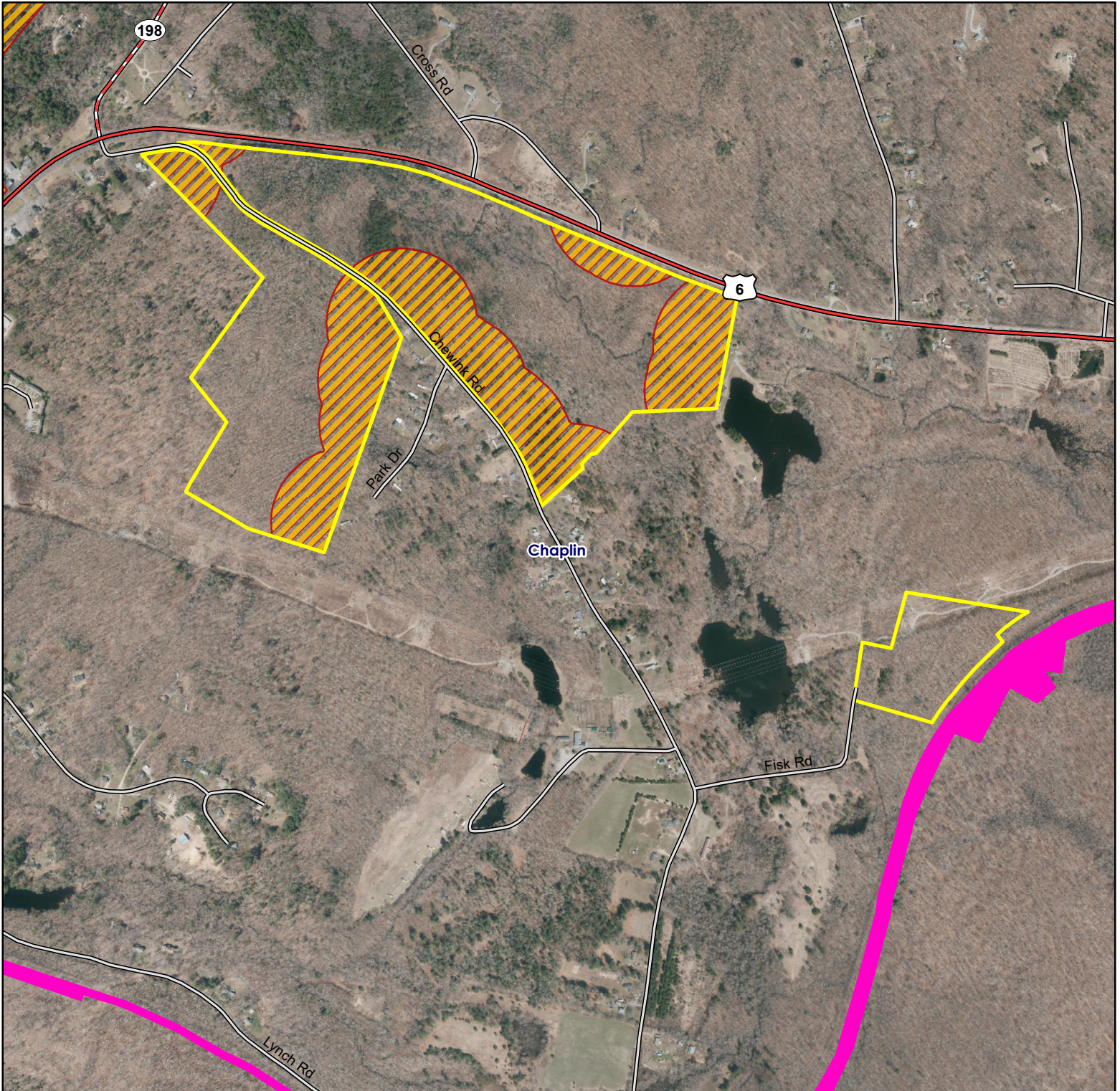


**Location:** Chaplin

**Description:** 12,596 acres total, approximately 152 acres in Chaplin South. Open to all forms of hunting. Please see the CT Hunting and Trapping Guide for more information.

**Note:** This map depicts an approximation of property boundaries. Please obey all postings.

**Symbols:** Approximate Boundary 500ft Firearms Restriction Zones Airline Trail SP



Map Date: Jan. 2022; Ortho 2019

1,000 500 0 1,000 Feet







# Natchaug State Forest


## Pomfret - East

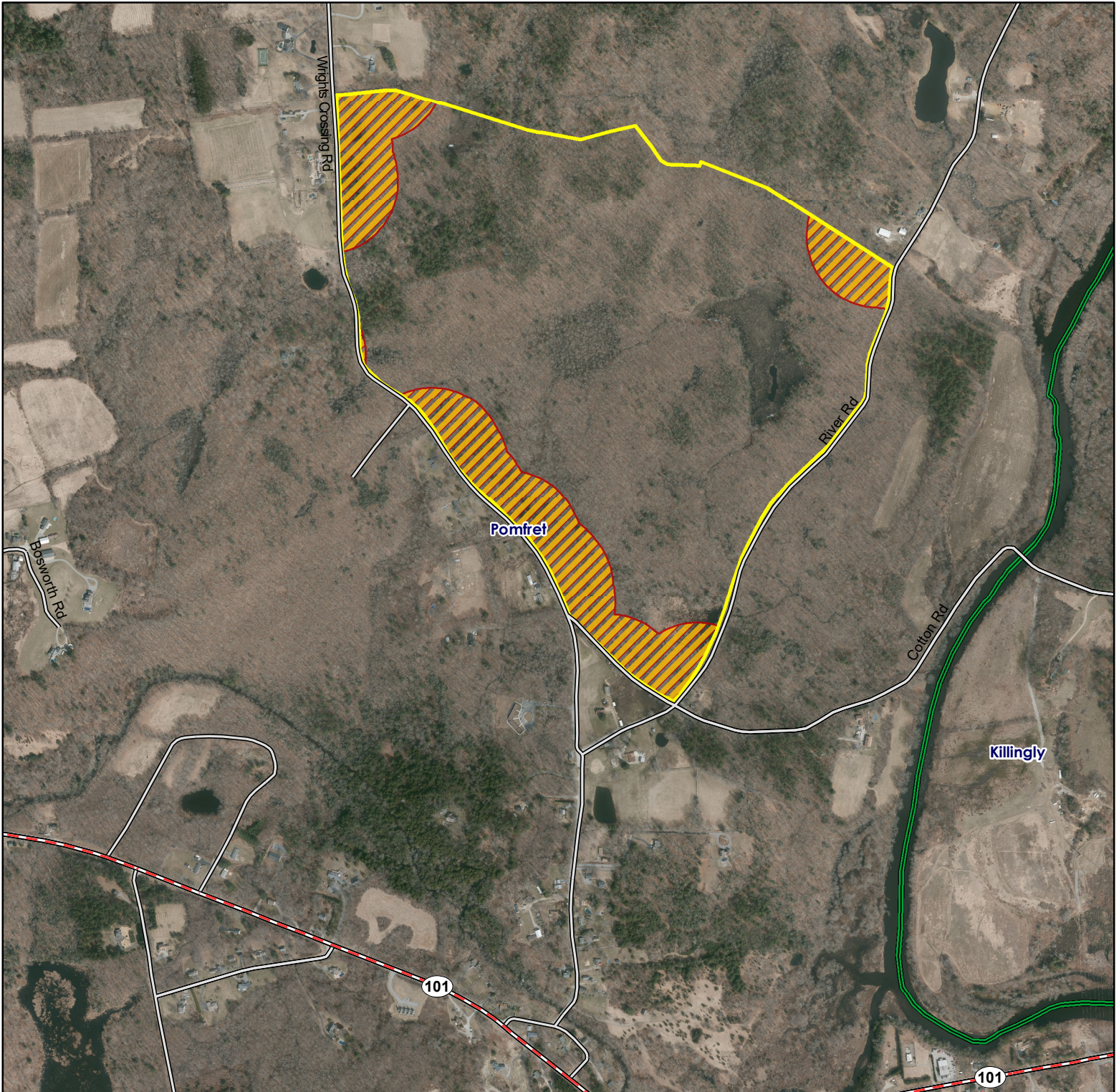


**Location:** Pomfret

**Description:** 12,596 acres total, approximately 222 acres in Pomfret East. Open to all forms of hunting. Please see the CT Hunting and Trapping Guide for more information

**Note:** This map depicts an approximation of property boundaries. Please obey all postings.

**Symbols:**  Approximate Boundary  500ft Firearms Restriction Zones



Map Date: Jan 2022; Ortho 2019

1,000 500 0 1,000 Feet







# Natchaug State Forest

## Pomfret / Brooklyn

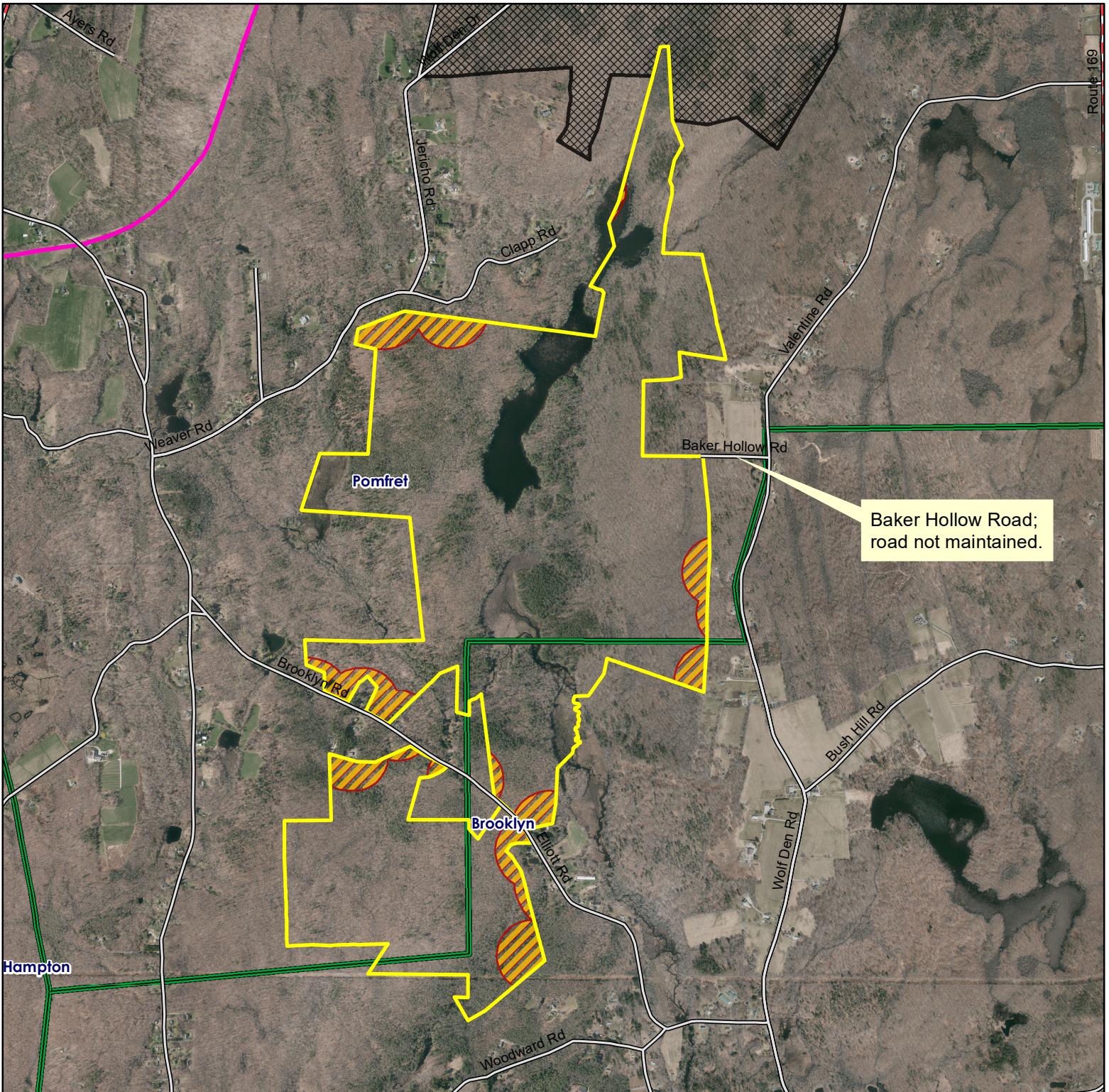


**Location:** Pomfret and Brooklyn

**Description:** 12,596 acres total, approximately 870 acres in Pomfret / Brooklyn. Open to all forms of hunting. Please see the CT Hunting and Trapping Guide for more information

**Note:** This map depicts an approximation of property boundaries. Please obey all postings.

**Symbols:** Approximate Boundary 500ft Firearms Restriction Zones Mashamoquet Brook SP; Closed to Hunting Airline Trail SP



Map Date: Jan. 2022; Ortho 2019







# Natchaug State Forest

## Pomfret - East

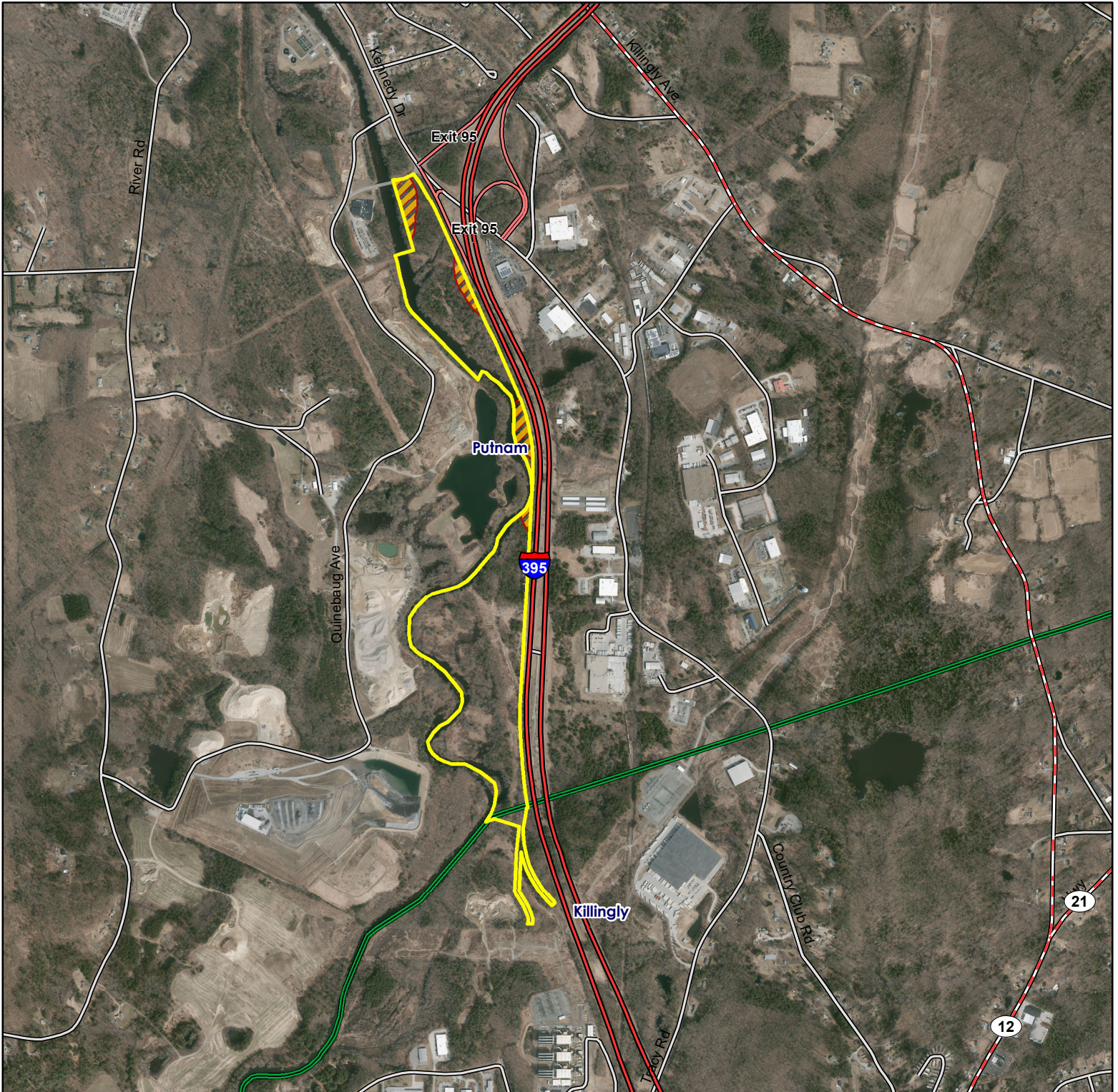


**Location:** Putnam

**Description:** 12,596 acres total, approximately 95 acres in Putnam. No parking or access is allowed from 395. Open to all forms of hunting. Please see the CT Hunting and Trapping Guide for more information

**Note:** This map depicts an approximation of property boundaries. Please obey all postings.

**Symbols:** Approximate Boundary 500ft Firearms Restriction Zones



Map Date: Jan 2022; Ortho 2019

1,700 850 0 1,700 Feet





# Natchaug State Forest

## Windham

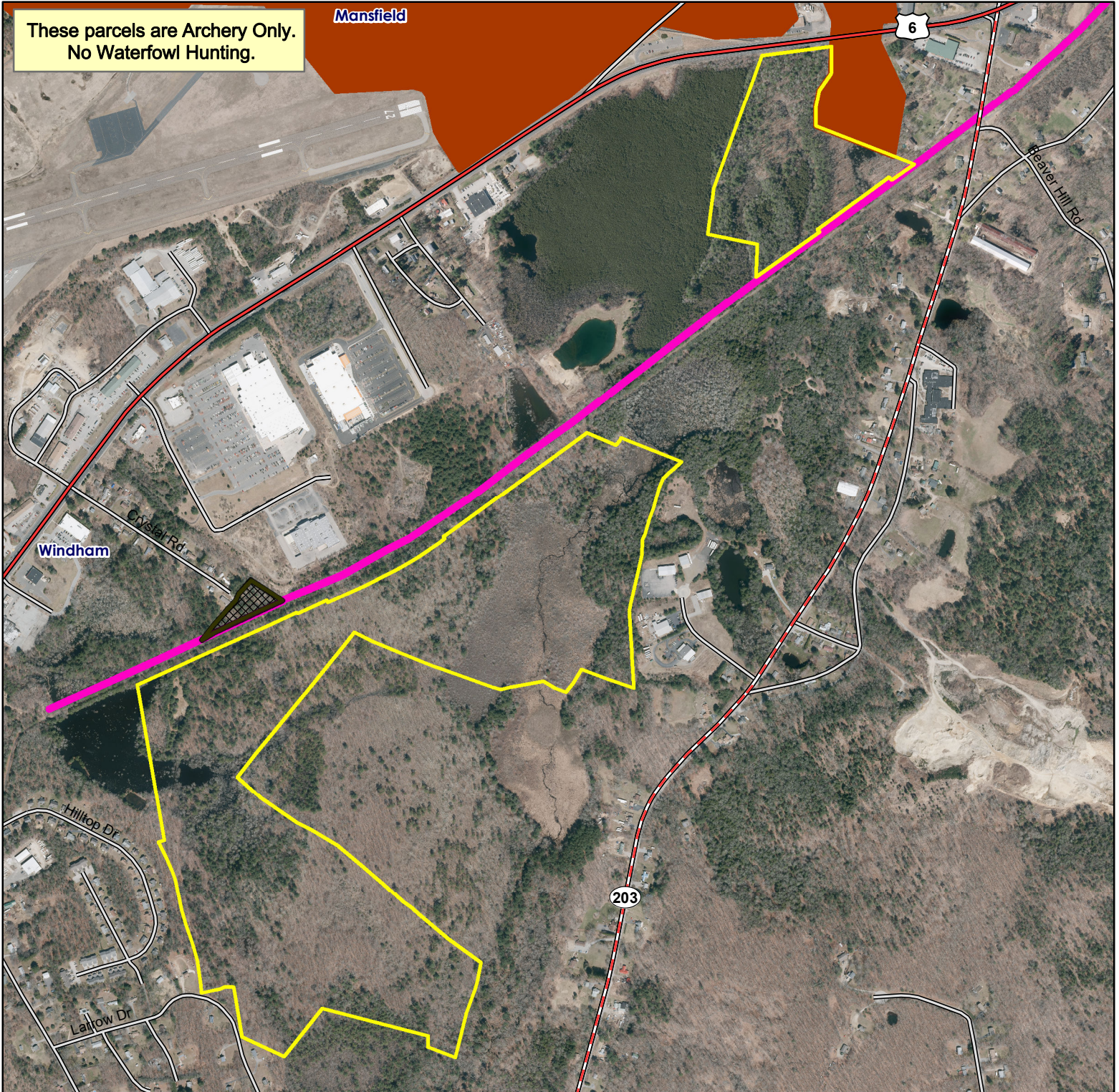


**Location:** Windham

**Description:** 12,596 acres total in Natchaug SF. Approximately 160 acres in Windham. **These parcels are archery only and not open for waterfowl hunting.** Please see the CT Hunting and Trapping Guide for more information.

**Note:** This map depicts an approximation of property boundaries. Please obey all postings.

**Symbols:** Approximate Boundary Closed to Hunting Mansfield Hollow State-Leased Areas Airline Trail SP



Map Date: Jan. 2022; Ortho 2019

