



Mattatuck State Forest Overview

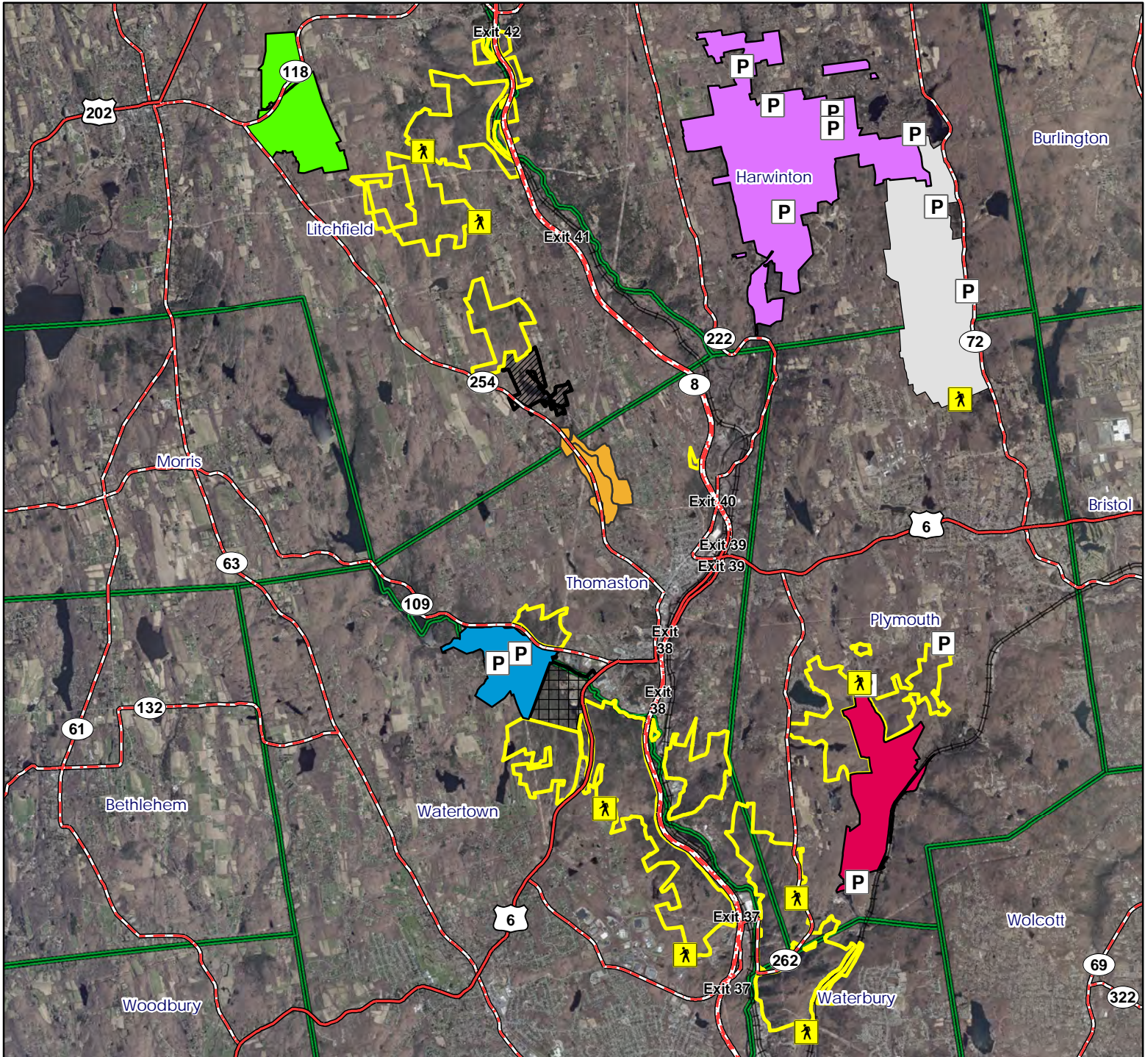


Location: Litchfield Harwinton, Thomaston, Watertown, Plymouth, Waterbury

Description: 4,491 total acres. Open for all forms of hunting. No Parking on Route 8.

Note: This map depicts an approximation of property boundaries. Please obey all postings.

- Symbols:**
- Mattatuck State Forest
 - Topsmead State Forest
 - Roraback WMA
 - Bristol Fish & Game Permit Required Area
 - Northfield Brook Lake
 - Black Rock Lake
 - Hancock Brook Lake
 - Mattatuck SF; Closed to hunting
 - Humaston Brook SP; Closed to hunting
 - Black Rock Lake SP; Closed to hunting
 - P Parking Area
 - ▲ Access Point
 - Town Boundary
 - Railroad



Map Date: August 2021; Ortho 2019

7,200 3,600 0 7,200 Feet





Mattatuck State Forest

Litchfield



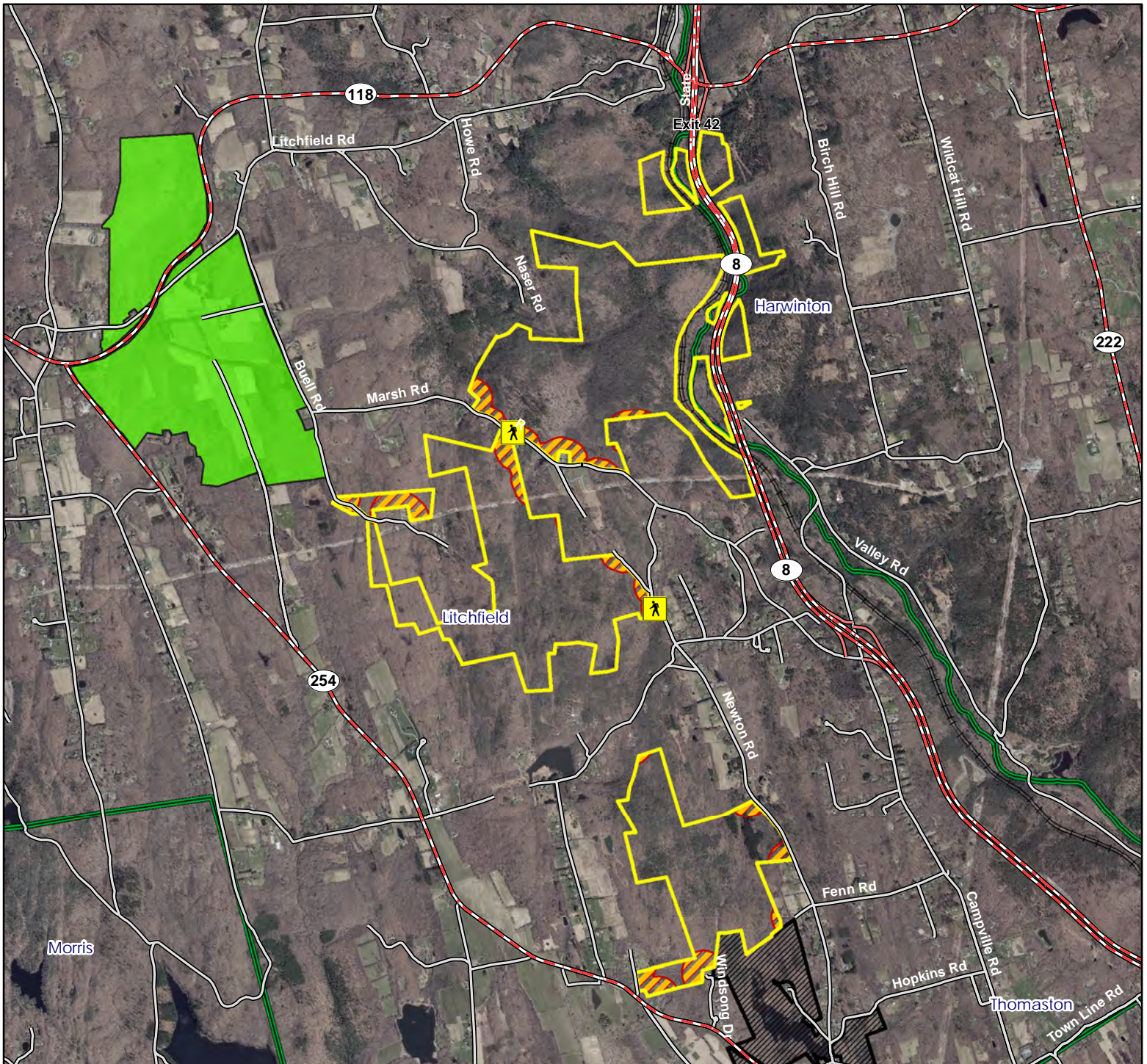
Location: Litchfield and Harwinton

Description: 4,491 total acres. Open to all forms of hunting.

Access: Exit 41 off of Route 8, access on Marsh Road. No Parking on Route 8.

Note: This map depicts an approximation of property boundaries. Please obey all postings.

Symbols: Approximate Boundary 500ft Firearms Restriction Zones Topsmead State Forest Humaston Brook SP; Closed to hunting Access Point Railroad



Map Date: August 2021; Ortho 2019

2,800 1,400 0 2,800 Feet





Mattatuck State Forest

Watertown



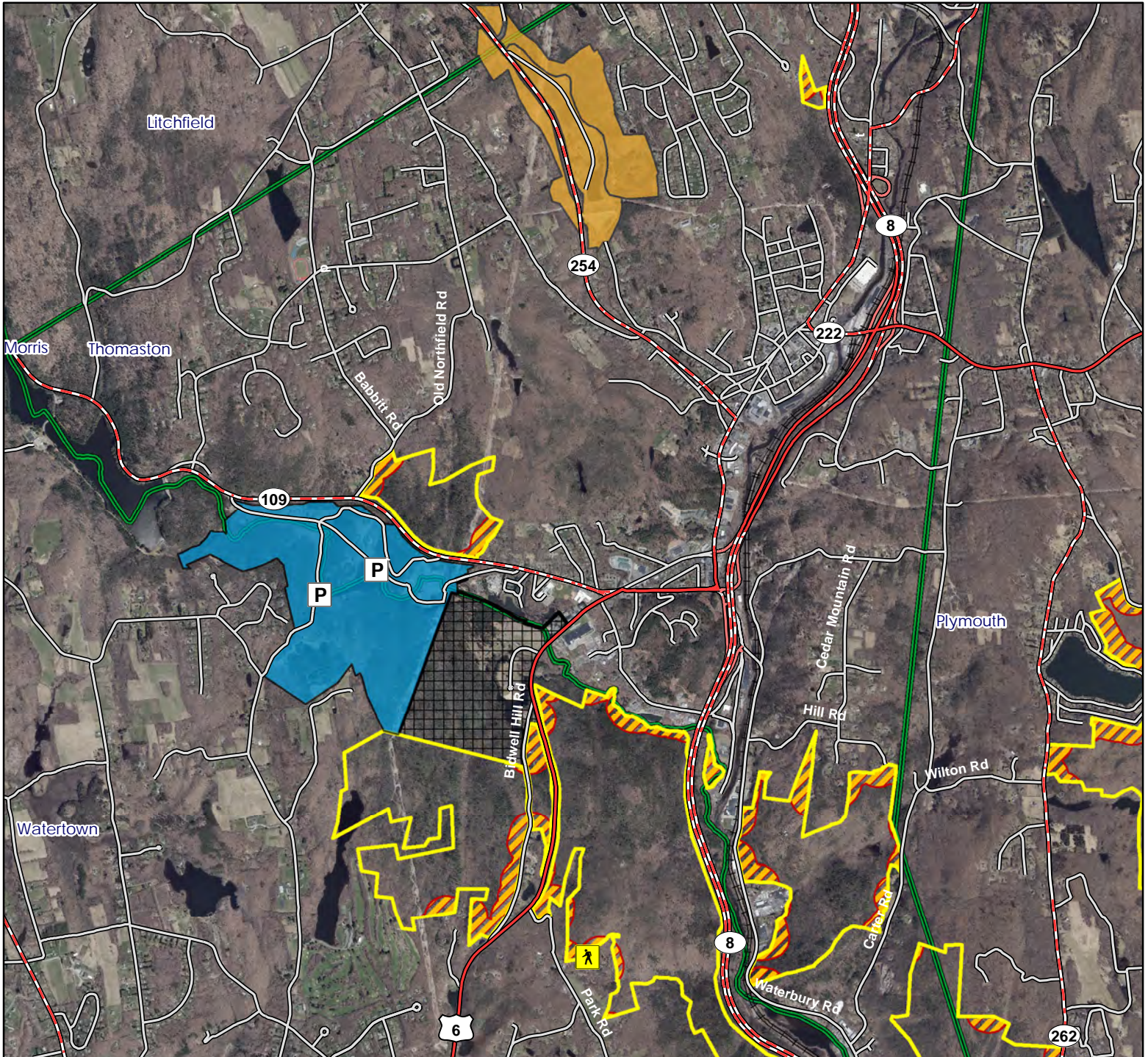
Location: Watertown, Thomaston and Plymouth

Description: 4,491 total acres. Open to all forms of hunting.

Access: Exit 37 off of Route 8, access on Echo Lake Road and off of Route 6. Parking on Old Branch Road. No Parking on Route 8.

Note: This map depicts an approximation of property boundaries. Please obey all postings.

- Symbols:**
- Approximate Boundary
 - 500ft Firearms Restriction Zones
 - Black Rock Lake SP; Closed to hunting
 - Black Rock Lake
 - Northfield Brook Lake
 - Parking Area
 - Access Point
 - Town Boundary
 - Railroad



Map Date: August 2021; Ortho 209

2,800 1,400 0 2,800 Feet





Mattatuck State Forest Plymouth

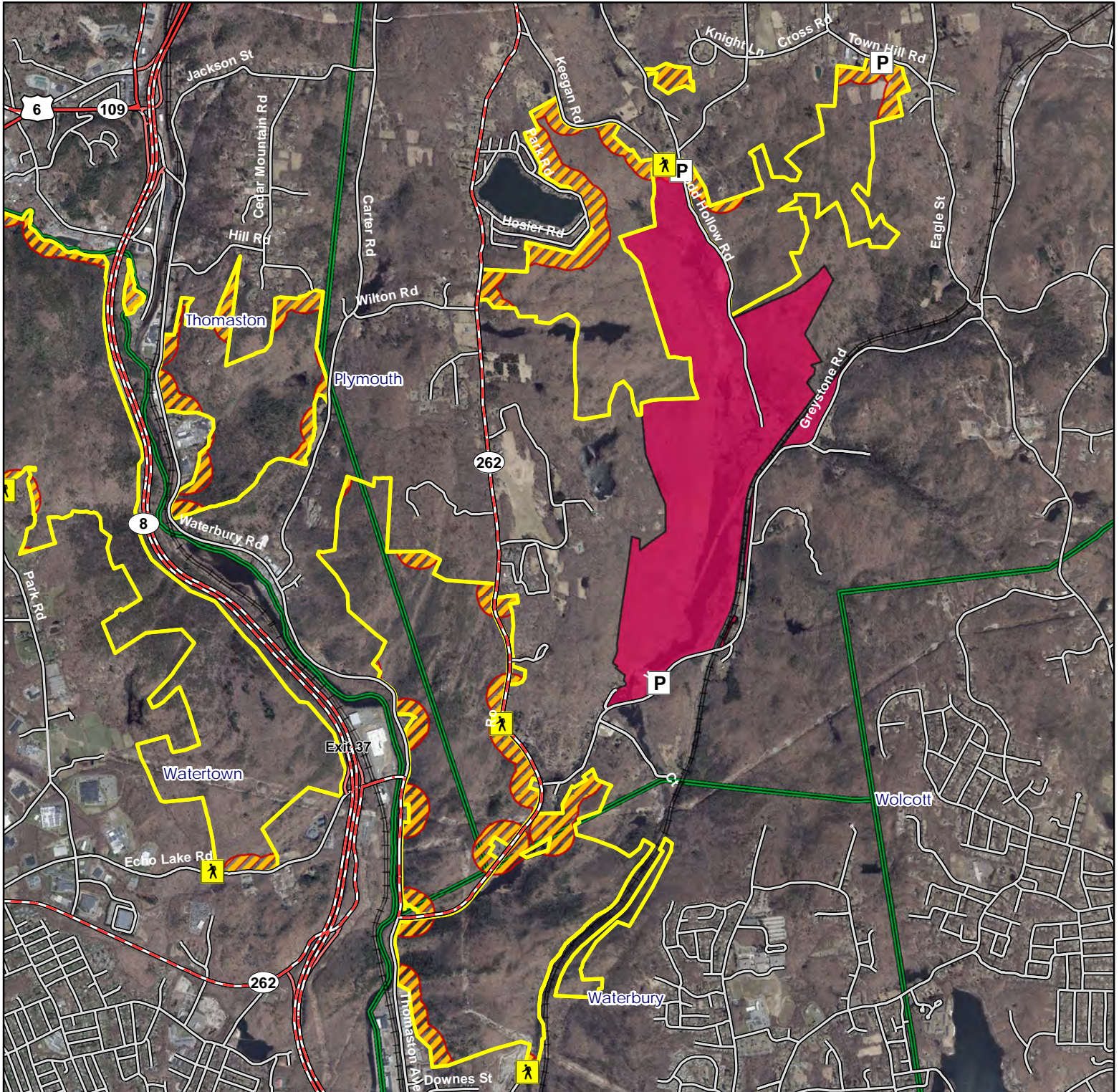


Location: Watertown, Plymouth, Thomaston, Waterbury

Description: 4,491 total acres. Open to all forms of hunting.

Access: Exit 37 off of Route 8, access on Echo Lake Road. Access off of Route 262, and Keegan Road. Parking on Todd Hollow Road, Town Hill Road, and Greystone Road. No Parking on Route 8.

Symbols: Approximate Boundary 500ft Firearms Restriction Zones Hancock Brook Lake Parking Area Access Point Town Boundary Railroad



Map Date: August 2021; Ortho 2019

2,700 1,350 0 2,700 Feet

