



# John A. Minetto State Park





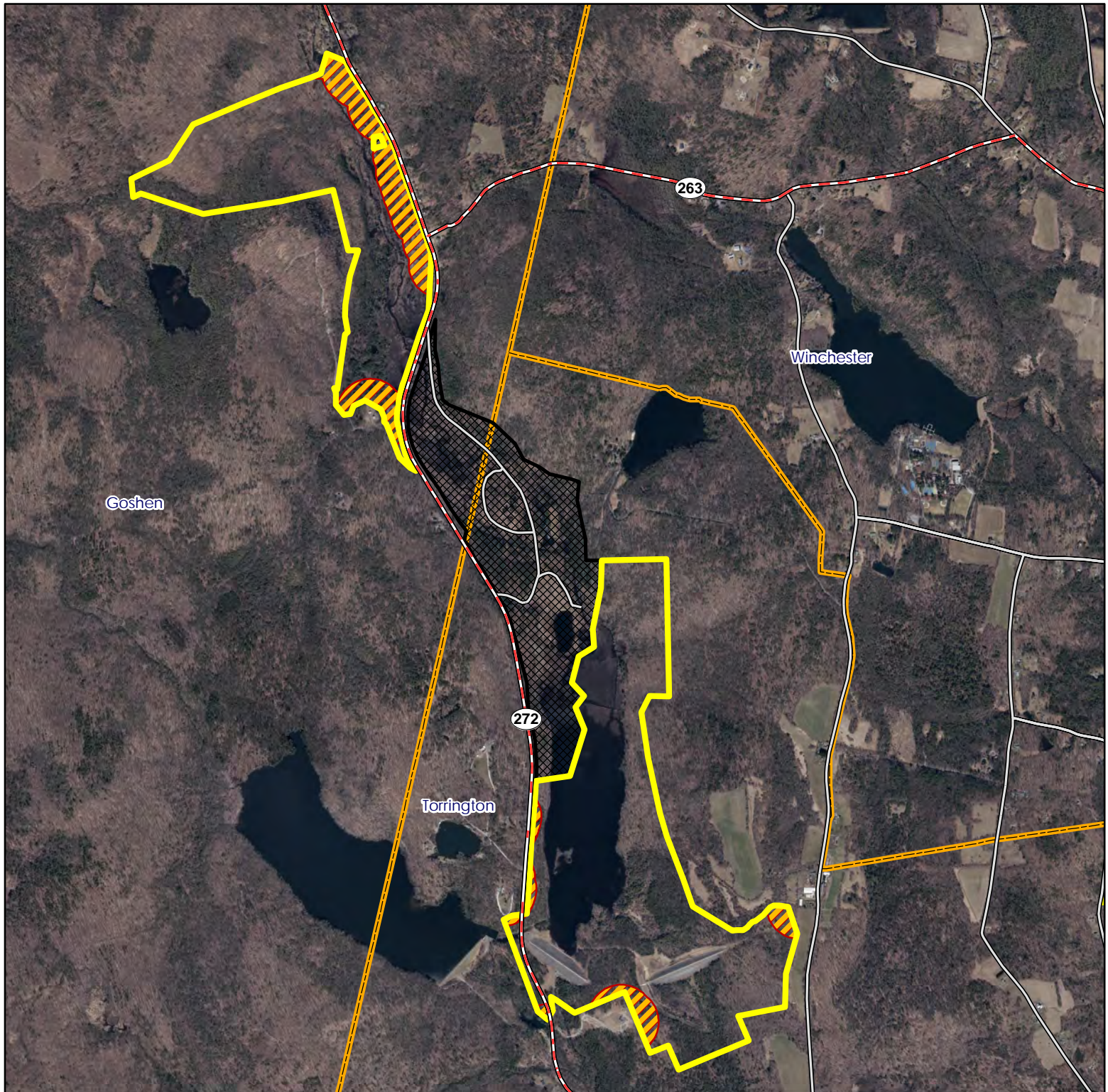
**Location:** Torrington and Goshen

**Description:** 760 acres. Approximately 576 acres open to hunting. Open for spring and fall firearms/archery turkey, small game, waterfowl and archery deer hunting. No firearms deer hunting allowed.

**Access:** Off of Route 272 north of Torrington. Please do not block any gates.

**Note:** This map depicts an approximation of property boundaries. Please obey all postings.

**Symbols:**  Approximate Boundary  500ft Firearms Restriction Zones  Closed to Hunting



Map Date: June 2025; Ortho 2023

2,500 1,250 0 2,500 Feet