

*Vernal Pool Dry Season Indicators*  
*(these cannot confirm vernal pools, but are often associated with them)*



Top: Basin depression with sparse herbaceous layer  
Bottom: Dark gray water-stained leaves

*Vernal Pool Dry Season Indicators*  
*(these cannot confirm vernal pools, but are often associated with them)*



Top: Water marks on tree trunks

Bottom: Woody vegetation on raised hummocks

*Vernal Pool Dry Season Indicators*  
*(these cannot confirm vernal pools, but are often associated with them)*



Top: Draped algae or moss on logs or branches

Bottom: Spotted salamander or wood frog metamorphs beneath cover objects  
in or near basin depression

*Vernal Pool Dry Season Indicators*  
*(these cannot confirm vernal pools, but are often associated with them)*

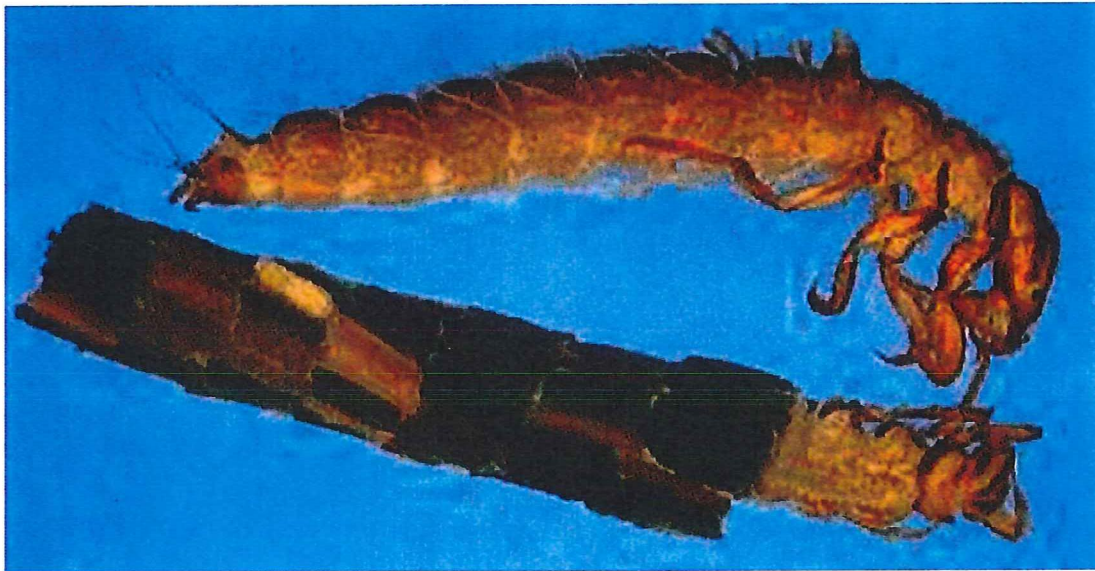
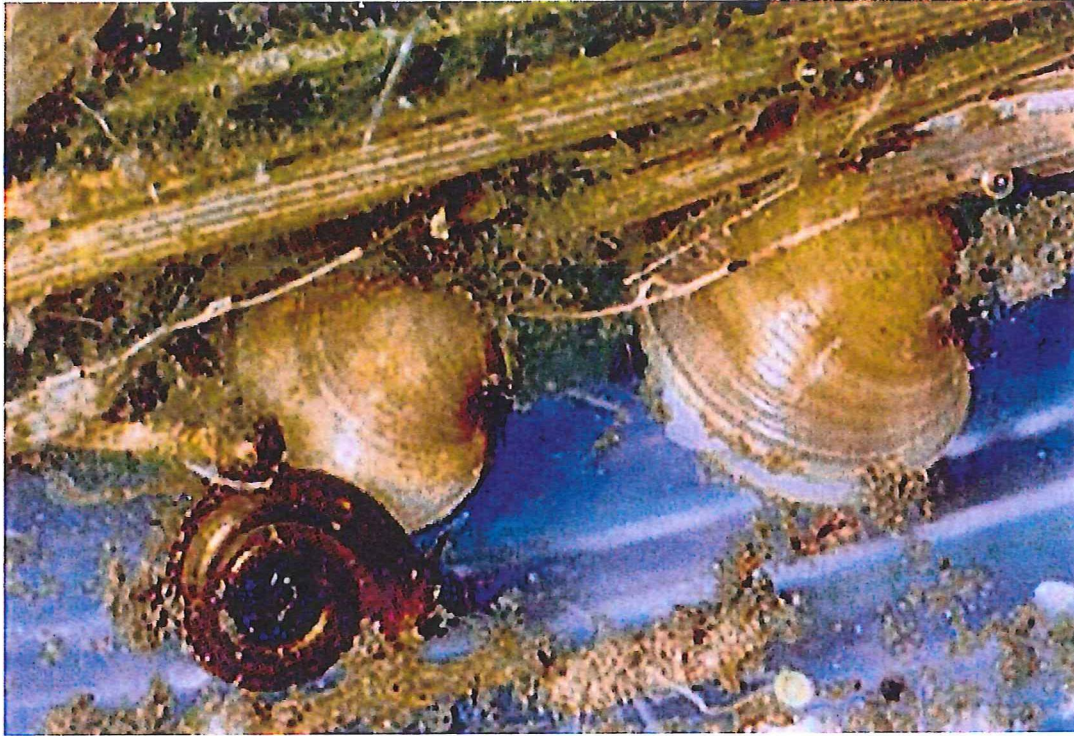


Top: Marsh fern

Bottom: Royal fern

Note: These ferns are certainly not restricted to vernal pools, but are often one of the few herbaceous plants growing in the understory of a vernal pool.

*Vernal Pool Dry Season Indicators*  
*(these cannot confirm vernal pools, but are often associated with them)*



Top: Fingernail clams in leaf litter  
Bottom: Caddisfly cases in leaf litter

(These are indicators of prolonged inundation)

