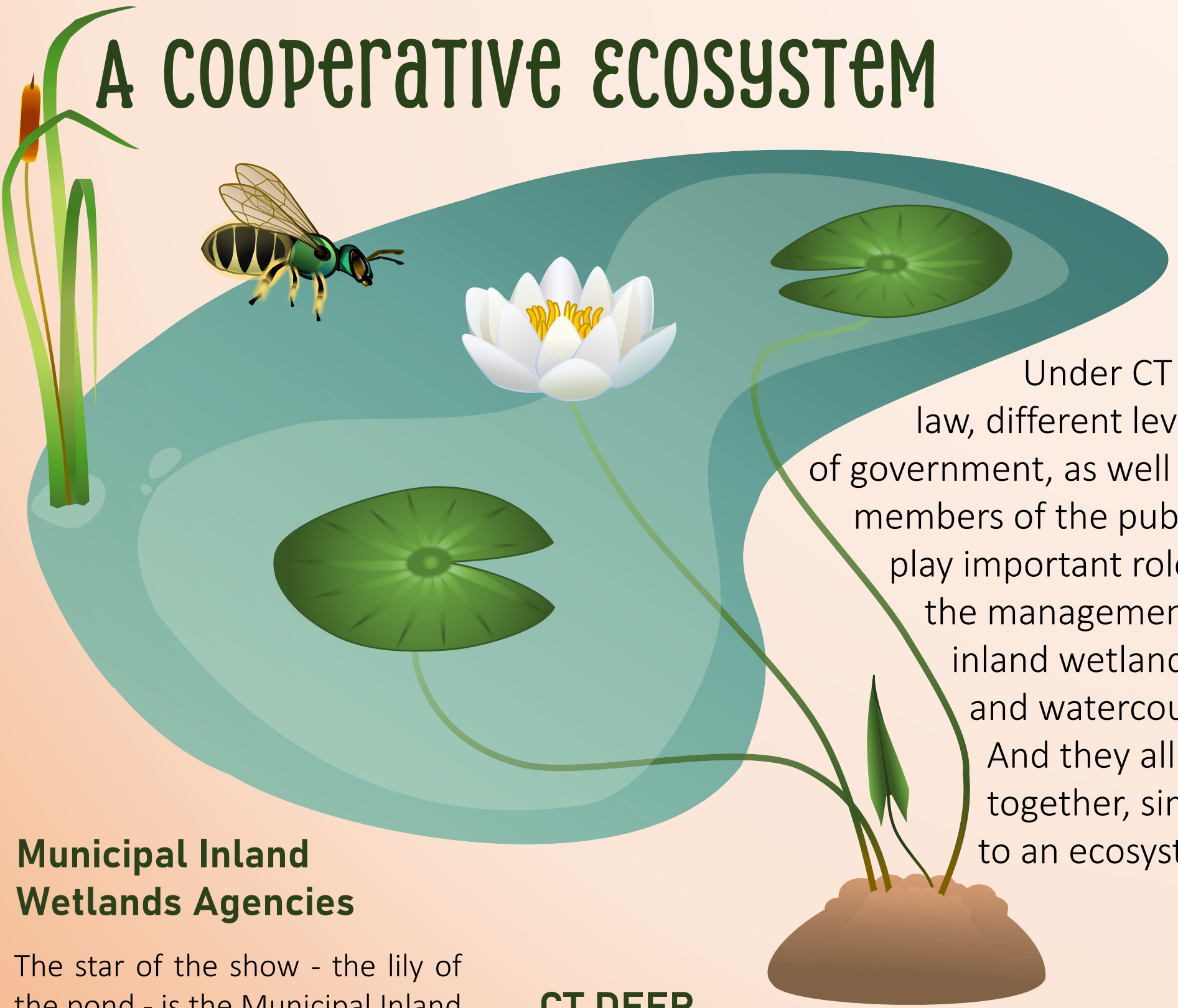


CT INLAND WETLANDS & WATERCOURSES: A COOPERATIVE ECOSYSTEM



Under CT law, different levels of government, as well as members of the public, play important roles in the management of inland wetlands and watercourses. And they all work together, similar to an ecosystem.

Municipal Inland Wetlands Agencies

The star of the show - the lily of the pond - is the Municipal Inland Wetlands Agency which regulates activities within inland wetlands, watercourses, and, sometimes, in nearby upland review areas. They review applications, grant permits, make jurisdictional rulings, and have the power to take enforcement actions against violations.

CT DEEP

The Department of Energy and Environmental Protection (DEEP) can be thought of as the stalks and leaves that support municipal inland wetlands agencies. DEEP provides training, develops guidance documents, and can advise municipalities in need of assistance on inland wetlands issues. State agency activities or activities that occur within wetlands or watercourses on state property are under the jurisdiction of the DEEP and require a DEEP permit.

The Public

Like bees gathering pollen from a flower, the Public can go to their municipal inland wetlands agency to collect a variety of information, including what activities are regulated or to determine a jurisdictional ruling. The Public should do their homework, by reading their municipality's regulations and DEEP's Citizen's Guide to Inland Wetlands, to be properly prepared before meeting with their local agency.

For more information, visit us at:
www.ct.gov/deep/inlandwetlands



Connecticut
Department of Energy &
Environmental Protection
LAND & WATER RESOURCES