

**QUALITY ASSURANCE PROJECT PLAN**

LONG ISLAND SOUND AMBIENT WATER QUALITY MONITORING PROGRAM

2022

STATE OF CONNECTICUT  
DEPARTMENT OF ENERGY & ENVIRONMENTAL PROTECTION  
BUREAU OF WATER PROTECTION AND LAND REUSE  
(formerly the Department of Environmental Protection/Bureau of Water Management)  
79 Elm Street  
Hartford, Connecticut 06106-5127

Rev. 08152022

## Section A Project Management

### A1 Title And Approvals:

TITLE: CTDEEP Long Island Sound Ambient Water Quality Monitoring Program Quality Assurance Project Plan, June 2022  
Connecticut Department of Energy & Environmental Protection (CTDEEP)  
Bureau of Water Protection and Land Reuse (BWPLR)  
Water Planning & Management Division/Water Planning  
Water Monitoring/Long Island Sound Ambient Water Quality Monitoring Program  
79 Elm Street  
Hartford, CT 06106-5127

  
DATE: 8/31/2022  
Katie O'Brien-Clayton, LIS Monitoring Program, QAPP Preparer, BWPLR Planning, CT DEEP

/s/ Mary Becker  
DATE: 08/31/2022  
Mary Becker, Monitoring Program Supervisor, BWPLR Planning, CT DEEP

  
DATE: 9/28/2022  
Chris Bellucci, Assistant Division Director, BWPLR Planning, CT DEEP

  
DATE: 9/28/22  
Jessica Iverson, EPA Quality Assurance Officer, USEPA LSASD

**LEAH O'NEILL** Digitally signed by LEAH O'NEILL  
Date: 2022.09.30 15:23:49 -04'00'  
DATE:  
Leah O'Neill, Project Officer, USEPA New England

Signature:   
Email: mary.becker@ct.gov

Signature:  
Email: christopher.bellucci@ct.gov

Signature:  
Email: iverson.jessica@epa.gov

Signature:  
Email: oneill.leah@epa.gov

## A2 Table Of Contents

Section A Project Management .....	2
A1 Title And Approvals: .....	2
A2 Table Of Contents .....	3
List of Figures .....	4
List of Tables .....	4
A3 Distribution List .....	1
A4 Project Organization .....	2
A5 Problem Definition/Background .....	4
A6 Project Description and Schedule .....	5
A7 Quality Objectives and Criteria.....	9
A8 Special Training Requirements/Certification.....	15
A9 Documentation and Records .....	15
Section B: Data Generation and Acquisition .....	17
B1 Sampling Process (Experimental) Design.....	17
B2 Sampling Methods.....	18
B3 Sample Handling and Custody .....	21
B4 Analytical Methods .....	23
B5 Quality Control.....	25
B6 Equipment Testing, Inspection and Maintenance .....	25
B7 Instrument/Equipment Calibration and Frequency .....	26
B8 Inspection of Supplies .....	26
B9 Nondirect Measurements.....	27
B10 Data Management .....	27
Section C: Assessment/Oversight .....	29
C1 Assessments and Response Actions .....	29
C2 Reports to Management .....	29
Section D: Data Validation and Usability.....	29
D1 Data Review, Validation, and Verification.....	29
D2 Validation and Verification Methods.....	30
D3 Reconciliation with Data Quality Objectives.....	30
APPENDIX A .....	31
APPENDIX B .....	32

## **List of Figures**

A4-1. Project Organization

A6-1. CTDEEP Long Island Sound Ambient Water Quality Monitoring Program station map.

## **List of Tables**

A6-1. Station information for all fixed stations sampled.

A7-1. Measurement quality objectives and quality assurance sample information for field water column observations.

A7-2. Measurement quality objectives and quality assurance sample information for laboratory analyses.

A7-3. Manufacturer's equipment specifications.

B2-1. Summary of field methods for Long Island Sound Ambient Water Quality Monitoring Program basic water quality variables.

B3-1. Summary of sample containers, preservation, and holding times for the Long Island Sound Ambient Water Quality Monitoring Program water quality indicators sample analyses.

B4-1. Summary of field and analytical methods for Long Island Sound Ambient Water Quality Monitoring Program water quality indicators sample analyses.

### A3 Distribution List

Leah O'Neill  
U.S. EPA New England  
Suite 100 (OEP06-1)  
5 Post Office Square  
Boston, MA 02109-3912  
(617) 918-1633  
Oneill.leah@epa.gov

Chris Bellucci  
CTDEEP BWPLR  
79 Elm Street  
Hartford, CT 06106-5127  
(860) 424-3715  
Christopher.bellucci@ct.gov

Mary Becker  
CTDEEP BWPLR  
79 Elm Street  
Hartford, CT 06106-5127  
(860) 424-3262  
Mary.becker@ct.gov

Jessica Iverson  
Quality Assurance Branch  
Laboratory Services and Applied Science  
Division  
EPA Region 1 – New England  
11 Technology Drive  
N. Chelmsford, MA 01863  
(617) 918-8630  
Iverson.jessica@epa.gov

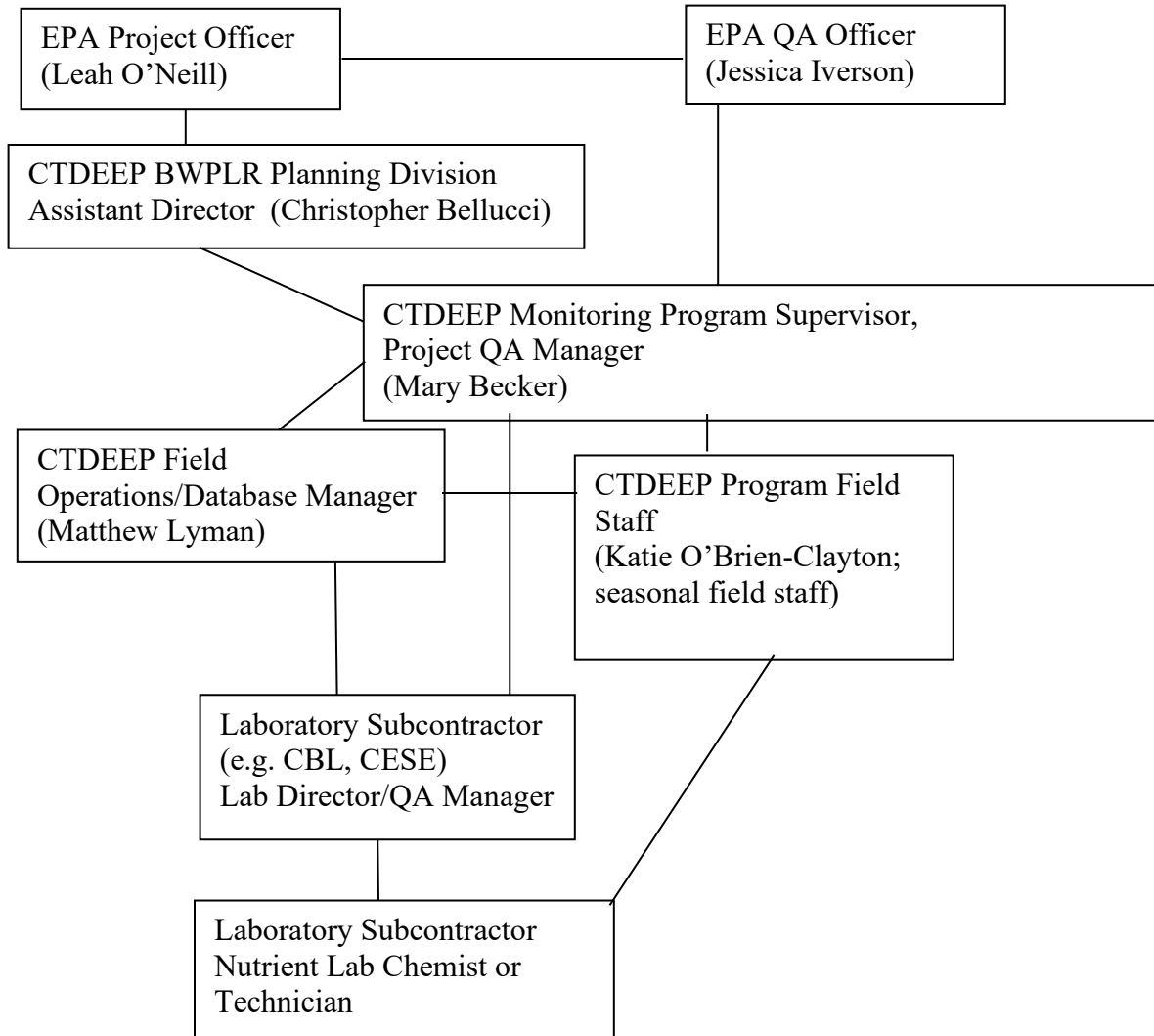
Matthew Lyman  
CTDEEP BWPLR  
79 Elm Street  
Hartford, CT 06106-5127  
(860) 424-3158  
matthew.lyman@ct.gov

Katie O'Brien-Clayton  
CTDEEP BWPLR  
79 Elm Street  
Hartford, CT 06106-5127  
(860) 424-3176  
Katie.obrien-clayton@ct.gov

## **A4 Project Organization**

Refer to Figure A4-1, Project Organization. Leah O’Neill, EPA New England, will have administrative oversight of the project. The project is planned, organized, and implemented by the Connecticut Department of Energy & Environmental Protection, Bureau of Water Protection and Land Reuse, Water Planning & Management Division. The Assistant Director of the Division (currently Christopher Bellucci) will be responsible for overall program supervision. The Supervisor of the Division’s Monitoring group (currently Mary Becker) will be responsible for ensuring project QA review and reporting, including: appropriate reviews of laboratory data and laboratory QC; QA and reporting requirements are met; review and verification of data, including quality assurance data, for completeness and to document any obvious or suspected problems; accuracy and completeness of the Program database; and coordination with laboratory QA manager to rectify any obvious or suspected problems. Current staff Matthew Lyman, Environmental Analyst 3 in the Long Island Sound Monitoring group, will be responsible for oversight of all field operations and data management of the monitoring program, including: scheduling and logistics; hiring and training seasonal assistants; overseeing and directing activities of field/office program staff; ensuring that field staff have reviewed Program QAPP and SOPs, received appropriate training in field and data entry/processing methods, and have shown competence in the performance of assigned duties; field data and sample chain-of-custody documentation; and database development and maintenance. Current staff Katie O’Brien-Clayton, Environmental Analyst 2 in the Long Island Sound Monitoring group, will be responsible for documentation, records, and reporting; assisting with quality assurance; and assisting with field operations logistics including scheduling and conducting field surveys, hiring, and training of seasonal field staff and data entry and processing.

The University of Connecticut Center for Environmental Science and Engineering (CESE), Analytical Services/Nutrients Lab, or other capable laboratory will provide nutrient analytical services. The Laboratory’s Director and/or Quality Assurance Officer will direct and ensure quality for the laboratory procedures. The Laboratory’s Nutrient Lab Chemist or Technician will be responsible for nutrient lab sample handling and custody procedures and sample analyses as well as the provision of required supplies to the field crew.



**Figure A4-1. Project Organization.**

## A5 Problem Definition/Background

To complement the development of a coupled hydrodynamic-water quality model being prepared as part of the Long Island Sound Estuarine Study (LISS) by the National Oceanic and Atmospheric Administration (NOAA) and Hydroqual, Inc., a series of comprehensive field surveys were conducted during 1988, 1989 and 1990. These surveys, designed to provide water column data essential to initialize, calibrate, and verify the numerical models, were conducted by the Marine Sciences Institute (MSI) of the University of Connecticut, the Marine Sciences Research Center (MSRC) of the State University of New York at Stony Brook, and the New York City Department of Environmental Protection (NYCDEP). The range of effort included in this work served to significantly extend the database developed over the preceding two years of the program, detailing water temperature- salinity structure throughout the Sound and established the first comprehensive dataset providing reasonably synoptic observations of flow and concurrent water quality characteristics on a Sound-wide basis. Such a data set was considered essential to modeling efforts and thus to management strategy development and implementation.

In an effort to provide continuity to the dataset developed during the years since the LISS Program was initiated, and to provide continuity from the research/evaluation phase of the program into the implementation phase, the CT DEEP (formerly DEP) initiated a Long Island Sound Ambient Water Quality Monitoring Program in January of 1991. This Program has continued, with EPA support, and has been expanded from 7 stations sampled monthly (January 1991 through December 1994) to 17 stations sampled monthly (April 2002 to present), with a period during which 18 stations were sampled monthly (January 1995 to March 2002). A Summer Hypoxia Survey, focused on observations of the area and duration of hypoxia in the bottom waters of the Sound each summer, samples up to thirty additional stations on a bimonthly basis through the summer months (mid-June through mid-September). These surveys monitor offshore waters of Long Island Sound only. Nearshore waters of less than 5-meter depth, and embayments are not part of the monitoring covered by this QAPP.

The LISS identified low dissolved oxygen (DO) in the bottom waters of the Sound as the highest priority issue and implemented a process to reduce nutrient loads to the Sound in an effort to improve bottom water DO conditions over time. The data to be provided by these surveys is considered essential to the continued evaluation of model predictions, and to monitor the effectiveness of management actions being taken to reduce nitrogen sources to the Sound.

The goals of the Department's Long Island Sound Ambient Water Quality Monitoring Program are:

- To monitor water quality parameters year-round on a monthly schedule at stations throughout Long Island Sound
- To monitor the temporal and spatial extent of summertime hypoxia through Sound-wide sampling every other week from late June through mid-September
- To maintain a long-term database of the information collected



The objectives of the Program are:

- To review the data periodically, in combination with available historical data, for trends
- To assess the long-term results of specific management actions such as the “no-net increase” nutrient (nitrogen) policy adopted in 1990 and the nutrient reduction strategy implemented in 1994
- To provide state and federal managers and policymakers with information on existing conditions and trends that can be used in the development, implementation and assessment of strategies to control and improve water quality in the Sound
- To make the data available for related efforts such as water quality assessments, research, TMDL development and evaluation, and water quality model development and calibration
- To make data available to other interested individuals/groups

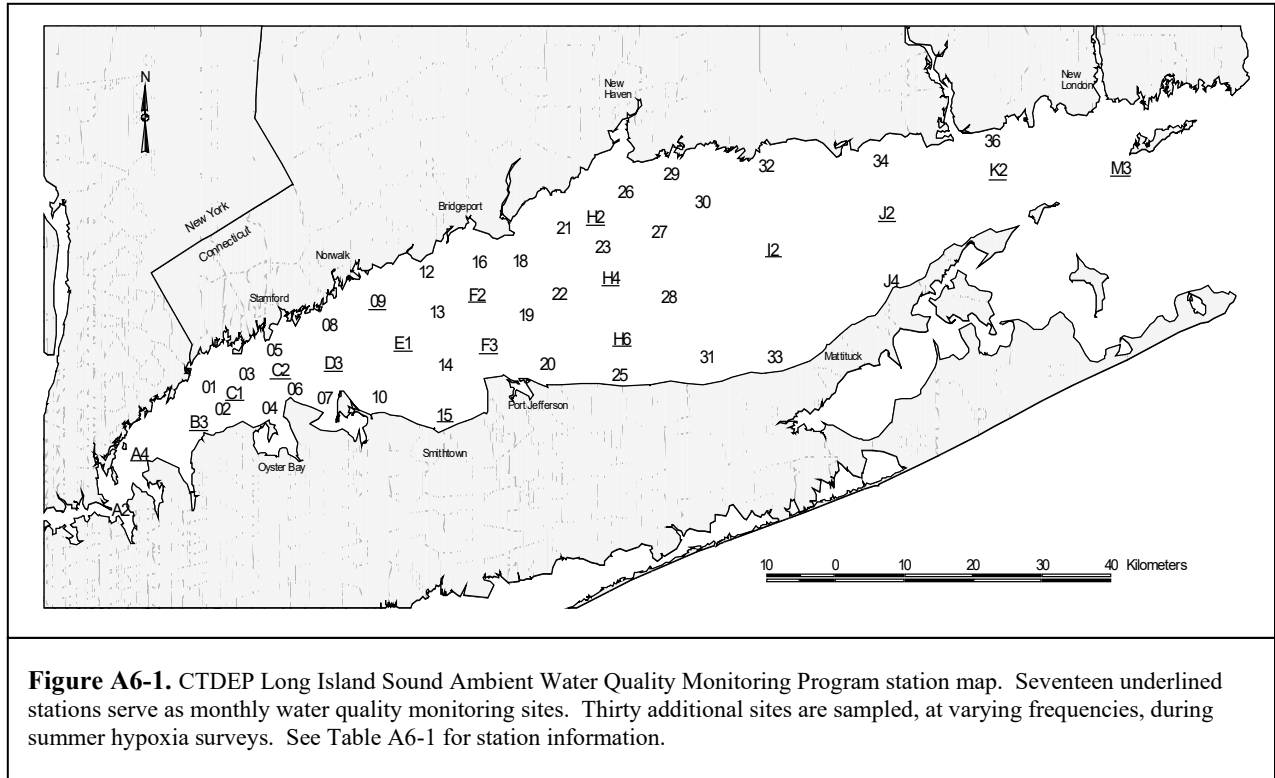
## **A6 Project Description and Schedule**

### Schedule of Surveys

The Monthly Field Survey involves sampling at 17 fixed stations (Figure A6-1 and Table A6-1), each station sampled once per month, generally during the first week of the month, and year-round.

The Summer Hypoxia Survey typically involves sampling at a minimum of 20 stations, up to a maximum of 42 from 47 available (Figure and Table A6-1). Sampling is conducted every other week beginning the third week of June through the third week of September, for a total of six unique surveys. This survey is combined with the Monthly survey during the July, August, and September Monthly surveys, with the fixed Monthly stations contributing to the total number of stations sampled for purposes of assessing hypoxic conditions. Hypoxia is most prevalent in the western-to-central sound (the Narrows, Western Basin and the western half of the Central Basin), so stations in these areas will tend to be sampled with higher frequency. Dissolved oxygen observations of less than 3.5 mg/L during the early September (Monthly) survey will dictate the need for a seventh survey to be conducted on or about the third week of September. The first (mid-late June) and last (mid-late September, when conducted) Hypoxia surveys of each summer season may involve sampling at fewer than 20 stations since these surveys are often conducted when hypoxia is absent or involves only a relatively small spatial area, so that an assessment of the area affected can be accomplished with fewer samples.

Calendar, weather, vessel/crew availability, and competing project constraints are expected to occasionally affect this schedule, resulting in samples taken earlier or later, or occasional missed samples.



## Parameters

Parameters and methods utilized during the previous thirty-one years of the Long Island Sound Water Quality Monitoring Program will be continued (Table A7-1 and Table A7-2). Field sampling will be conducted by personnel from CTDEEP. Filtration of samples for nutrient analyses will be conducted in the field and all filters and filtrate samples prepared will be delivered to an appropriate laboratory, with proven capability with regard to low-level estuarine nutrient analysis. Laboratories that have provided analytical services in the past, and are most likely to be used going forward, include the Nutrient Analytical Services Laboratory of the University of Maryland, Center for Environmental Science, Chesapeake Biological Laboratory (NASL-CBL); and the University of Connecticut’s Center for Environmental Sciences and Engineering (UConn-CESE). Field methods, apparatus, sample types and sample handling information are contained in Tables B2-1, B3-1, and B4-1.

## Data Availability

All field data, including the profile data will be processed within one month of recovery, and then available in the Program’s database. Analytical data from the contract laboratory will be available in the Program’s database as soon as practical, following receipt and review. Laboratory data and QC reports are expected within 60 days of sample delivery.

Summary reports will be prepared following each Summer Hypoxia survey and submitted to EPA

and other interested parties via email, typically within one week of the survey completion. Annual Hypoxia Survey reports, including a summary of the year's hypoxic event and comparisons to previous years will be submitted to EPA within six months of the Survey end. Progress reports of the Monthly Survey can be prepared for submission to EPA upon request of the Project Officer.

Table A6-1. Station information. See Figure A6-1.

Station Name	Station Depth (meters)	Latitude	Longitude	General Schedule	Sampling Record	Notes
<b>Narrows</b>						
A4	32.6	40 52.35N	73 44.05W	Year round	8/94 - present	
B3	18.0	40 55.10N	73 38.57W	Year round	2/91 - present	
01	14.8	40 57.80N	73 37.42W	Summer	6/94 - present	
02	15.8	40 56.08N	73 36.04W	Summer	6/94 - present	
C1	19.8	40 57.35N	73 34.82W	Year round	12/94 - present	
03	24.1	40 58.76N	73 33.64W	Summer	6/94 - present	
04	12.3	40 56.27N	73 31.16W	Summer	6/94 - present	
C2	32.4	40 59.06N	73 30.13W	Year round	12/94 - present	
05	13.0	41 00.56N	73 30.82W	Summer	6/94 - present	
06	18.2	40 57.67N	73 28.60W	Summer	6/94 - present	
07	12.7	40 57.02N	73 25.52W	Summer	6/94 - present	
08	12.9	41 02.45N	73 25.08W	Summer	6/94 - present	
D3	40.9	40 59.63N	73 24.68W	Year round	2/91 - present	
<b>Western Basin</b>						
09	9.1	41 04.25N	73 20.17W	Year round	6/94 - present	
10	17.3	40 57.10N	73 19.95W	Summer	6/94 - present	
E1	38.1	41 01.16N	73 17.48W	Year round	12/94 - present	
12	10.5	41 06.52N	73 15.18W	Summer	6/94 - present	
13	22.3	41 03.50N	73 14.06W	Summer	6/94 - present	
14	25.4	40 59.49N	73 13.13W	Summer	6/94 - present	
15	15.3	40 55.88N	73 13.27W	Year round	6/94 - present	
16	8.9	41 07.22N	73 09.75W	Summer	6/94 - present	
F2	19.7	41 04.82N	73 09.92W	Year round	12/94 - present	
F3	40.9	41 01.07N	73 08.67W	Year round	1/91 - present	
<b>Central Basin</b>						
18	12.6	41 07.34N	73 05.40W	Summer	6/94 - present	
19	25.5	41 03.32N	73 04.85W	Summer	6/94 - present	
20	22.5	40 59.64N	73 02.54W	Summer	6/94 - present	
21	14.3	41 09.84N	73 00.89W	Summer	6/94 - present	
22	26.9	41 04.94N	73 01.37W	Summer	6/94 - present	
H2	13.9	41 10.68N	72 57.63W	Year round	6/94 - present	
23	19.0	41 08.41N	72 56.93W	Summer	6/94 - present	
H4	23.7	41 06.10N	72 56.04W	Year round	6/94 - present	
H6	41.4	41 01.56N	72 54.81W	Year round	1/91 - present	
25	10.7	40 58.86N	72 55.09W	Summer	6/94 - present	
26	11.2	41 12.55N	72 54.51W	Summer	6/94 - present	
27	20.2	41 09.52N	72 50.97W	Summer	6/94 - present	
28	30.1	41 04.69N	72 50.01W	Summer	6/94 - present	
29	9.4	41 13.89N	72 49.78W	Summer	6/94 - present	
30	15.3	41 11.78N	72 46.52W	Summer	6/94 - present	
31	25.8	41 00.25N	72 46.10W	Summer	6/94 - present	sampled infrequently
32	10.7	41 14.49N	72 39.94W	Summer	7/94 - present	sampled infrequently
I2	27.3	41 08.25N	72 39.30W	Year round	1/91 - present	
<b>Eastern Basin</b>						
33	20.2	41 00.23N	72 39.07W	Summer	6/94 - present	sampled infrequently
34	16.7	41 14.76N	72 28.10W	Summer	6/94 - present	sampled infrequently
J2	21.8	41 10.92N	72 27.46W	Year round	6/94 - present	
J4	18.5	41 05.85N	72 27.00W	Summer	6/98 - present	sampled infrequently
36	6.6	41 16.23N	72 16.53W	Summer	7/94 - present	sampled infrequently
K2	37.7	41 14.06N	72 15.95W	Year round	7/94 - present	
M3	72.6	41 14.23N	72 03.20W	Year round	1/91 - present	

## A7 Quality Objectives and Criteria

The primary focus of the CTDEEP's Long Island Sound Ambient Water Quality Monitoring Program is to monitor and document basic water column characteristics (temperature, salinity, density, light, chlorophyll, suspended solids) and nutrient concentrations to detect changes over time and be able to estimate the rate of any such changes. The Program also serves as a long-term, consistent data source to support Long Island Sound related research. Because the Program's focus is measurements, goals for data quality focus on individual measurements. With regard to long-term trend analyses, the data quality objective is that for each variable of interest (ambient nitrogen, phosphorus, chlorophyll *a*, dissolved oxygen, etc.) an existing trend can be detected with 95% confidence, and the rate of change estimated within 20%.

### Measurement Quality Objectives

One measure of data quality is completeness. With regard to analytical laboratory measurements, the goal for record completeness is 100%. Thirty-one years of sampling on this monitoring program (January 1991 through December 2021) has produced a dataset with a completeness record well over 90% with regard to expected station visits. During the most recent two-year period completeness dropped some due to COVID-19-related cancellations. The COVID pandemic forced the cancellation of four monthly cruises during the 2020 and 2021 calendar years (two months each year), and some modifications to ancillary sample collections in other months (*e.g.*, no plankton or phytopigment samples). During the previous five-year period, 2012-2016, not a single survey was missed. If missed station visits are not considered, the completeness of the analytical data through November 2016 (for all completed station visits) was 99%. For some years, 100% completeness in both areas was achieved. Completeness is affected by cancelled cruises and missed stations during a cruise (*i.e.*, expected samples are never collected), and by field or laboratory accidents or malfunctions that render collected samples insufficient for any or all analyses, or that render analytical results unattainable or unreliable. Missed station visits are generally due to weather related conditions and lack of vessel or crew availability for rescheduling, or other vessel issues, including availability or where the use of an alternate/backup vessel meant limitations to sampling.

With regard to water column profile data obtained prior to February 2018 with a multiparameter sonde (SeaBird Conductivity-Temperature-Depth (CTD) profiler), the achievable level of data completeness was somewhat less, but still very high overall. Over the first nineteen years of data (through May 2010), the total number of CTD-related records was over 680,000 (including all survey types) [511,000 from monthly WQ surveys only] compared with 103,800 [101,900 from monthly WQ surveys only] nutrient/analytical records. Each CTD record holds data averaged from a 0.2-meter slice of the water column. A single profile from a 20-meter-deep station, for example, would be expected to have approximately 100 records. Overall, nineteen years of sampling produced a CTD dataset better than 96% complete, based on existing profiles. In addition, there are profiles that were never obtained because of missed station visits, inoperable or malfunctioning equipment, or operator error. Because the dissolved oxygen sensor is a separate component and is affected by clogged plumbing and membrane problems, dissolved oxygen data may be lost without the concurrent loss of pressure, temperature, and salinity data within that depth record. In fact, a review of CTD data (nineteen years, 1991-through May 2010) shows dissolved oxygen data was incomplete approximately 5% of the time, compared to available CTD pressure data. Comparatively, CTD-

measured temperature was incomplete 2% of the time, and conductivity/salinity 3% of the time. In February 2018 the Program switched to a multiparameter sonde manufactured by Yellow Springs Instruments (YSI EXO2). From February 2018 to June 2022 there are over 293,000 multiparameter sonde-related records. Any incomplete data documented in recent years would be the result of missed station visits (e.g., 2020 and 2021 survey cancellations due to COVID), inoperable or malfunctioning equipment, or operator error. For the most recent sampling year (2021), CT DEEP completed 364 station visits; 40 stations visits were missed due to COVID survey cancellations resulting in a 90.1% completeness rate.

A second measure of data quality is representativeness. Sampling occurs monthly, year-round at fixed station locations. These locations were chosen based on historical sample locations and data, basin morphology of the Sound, and depth strata to be representative of ambient conditions Sound-wide. Sample collection and handling procedures are important to maintain representativeness, and they must be followed consistently. Samples stored temporarily in Niskin sample collection bottles must be well-mixed before any subsample is drawn. Samples must be stored according to SOP specifications to maintain sample integrity until analysis.

A third measure of data quality is comparability. Program sampling procedures are based on previous data collection efforts of the Long Island Sound Study and were designed in concert with participants from this previous monitoring, water quality model development team, and expert participants in the development of the LISS Monitoring Plan to support the CCMP. Most sampling and analytical procedures remain the same as those implemented over the previous 31 years of this monitoring program. Consistent field and laboratory procedures, well-documented by the appropriate SOPs, help ensure consistent and reproducible data. Changes in methods will be accompanied by a period of split samples, allowing for adequate comparison between the results of the new method and the old. Beginning in 2010 the analytical laboratory being used for sample analysis has been required to participate in a multi-lab comparison program that provides data specifically to assess the laboratory's ability to produce data comparable to several other laboratories located in the Northeast and Mid-Atlantic regions of the United States (see further discussion below).

#### Procedures for Assessing Accuracy and Precision:

This QAPP is designed to ensure that accurate and precise data are being generated. Quality control (QC) measures include those actions which are taken in the laboratory to verify that the measurement system is in control (e.g., instrument calibration; the analysis of reference standards; the analysis of matrix spikes, replicates, and blanks). The QA program is designed to manage sample handling, documentation, and custody; proper data generation; and quality control actions. The QA program primarily tracks and monitors the fate of a sample from collection to data submission allowing the Project Manager and technical staff to assure proper sample analysis through appropriate methods, and that the necessary QC measures have been taken to ensure that representative data of definable quality have been produced.

Analytical laboratory procedures, including the key elements of laboratory quality control are documented in laboratory-specific documentation (Appendix B). A number of routine quality control (QC) checks are analyzed with each batch of samples, including continuing calibration verification, calibration blanks, laboratory duplicates, and spike sample analyses. The goal for

each sample batch is to run each QC check on 10% of samples. Field blanks (prepared randomly once each cruise day to evaluate contamination potential) and field duplicates (replicates taken in rapid succession to estimate field precision) are also provided to the laboratory, at a rate of at least one per ten samples (10%).

Determination of accuracy will be accomplished by evaluating a continuing series of spiked samples. Percent recovery in the range of 85 to 115% is considered to be acceptable providing all other QC conditions are within acceptable limits. Accuracy of analysis will also be assessed by analyzing standard reference materials obtained commercially. The Continuing Calibration Verification (CCV), by analysis of standard reference materials (including, when available, EPA Quality Control Solutions) must fall within the control limits of 85-115% of the true value for instrument performance to be deemed acceptable.

Beginning in 2010, the laboratory providing nutrient analytical services was and will continue to be required to participate in the Chesapeake Bay Blind Audit Program. The current program provides estuarine nutrient samples to laboratories twice per year for interlab comparisons of analytical results. Samples include both particulate and dissolved (high and low concentrations) samples for all of the standard analytes (carbon, nitrogen, phosphorus), plus chlorophyll. Typically, twelve, or more, laboratories participate. The comparison data is valuable as an ongoing evaluation of laboratory accuracy in methods and results. The CTDEEP made participation in this semi-annual audit a condition of the scope-of-work agreement with UCONN-CESE and will continue to require participation by any primary lab services provider as long as the program is available. The audit program is administered by NASL-CBL of the University of Maryland, which is also a participating laboratory.

Determination of precision will be accomplished by evaluating a continuing series of replicated samples. The Relative Percent Difference (RPD) is used to evaluate the long-term precision of the method for each parameter. A control limit of +/- 15% RPD shall be used to define acceptable precision.

Accuracy and precision goals for measured parameters are provided in Tables A7-1 and A7-2, along with quality assurance sample types. Accuracy and precision goals are based on instrument manufacturer or analytical laboratory specifications, or historical data or experience. Most variables have one or more QA/QC samples associated with them.

Table A7-1. Measurement quality objectives and quality assurance sample information for field water column observations.

Variable	QA Sample Type	Frequency of QA	Data Generated
Depth, temperature, DO, Conductivity/ Salinity, pH, turbidity, Total Algae, fDOM	Performance verification at certified calibration facility	Annually	response vs. calibration standards; annual drift
Depth	QC check against vessel's depth finder	Every cast	Difference between profile station depth and on-board depth finder
Temperature	QC check against NIST certified thermometer	At least biennially	Difference between probe and standard
Conductivity/ Salinity, pH, turbidity, Total Algae, fDOM	Calibration against standards	At least monthly; always prior to cruise	Difference between probe and standard
Dissolved Oxygen	Calibration	At least monthly; always prior to cruise	100% saturated air



Table A7-2. Measurement quality objectives and quality assurance sample information for laboratory analyses.

Variable	Accuracy Goal	Precision Goal	QA Sample Type	Frequency of QA	Data Generated
Ammonia (NH <sub>3</sub> )	85-115%	15%	Standards, spikes, lab and field duplicates; semiannual audit	10% per batch/one cruise	Relative accuracy and precision
Nitrate + Nitrite (NO <sub>3</sub> <sup>-</sup> +NO <sub>2</sub> )	85-115%	15%	Standards, spikes, lab and field duplicates; QC check against Day-0 whole water BOD sample at up to 10 stations; semiannual audit	10% per batch/one cruise	Relative accuracy and precision; secondary NOx measurement on fresh sample
Total Dissolved Nitrogen (TDN)	85-115%	15%	Standards, spikes, lab and field duplicates; semiannual audit	10% per batch/one cruise	Relative accuracy and precision
Particulate Nitrogen (PN)	85-115%	15%	Field blanks and field duplicates; semiannual audit	10% per batch/one cruise	Precision; estimate of field contamination
Orthophosphate (PO <sub>4</sub> <sup>3-</sup> ) or (DIP)	85-115%	15%	Standards, spikes, lab and field duplicates; semiannual audit	10% per batch/one cruise	Relative accuracy and precision
Total Dissolved Phosphorus (TDP)	85-115%	15%	Standards, spikes, lab and field duplicates; semiannual audit	10% per batch/one cruise	Relative accuracy and precision
Particulate Phosphorus (PP)	85-115%	15%	Standards, spikes, field blanks, lab and field duplicates; semiannual audit	10% per batch/one cruise	Relative accuracy and precision; estimate of field contamination
Dissolved Organic Carbon (DOC)	85-115%	15%	Standards, spikes, lab and field duplicates; semiannual audit	10% per batch/one cruise	Relative accuracy and precision
Particulate Carbon (PC)	85-115%	15%	Field blanks and field duplicates; semiannual audit	10% per batch/one cruise	Precision; estimate of field contamination
Dissolved Silica (SiO <sub>2</sub> )	85-115%	15%	Standards, spikes, lab and field duplicates	10% per batch/one cruise	Relative accuracy and precision
Biogenic Silica (BioSi)	85-115%	15%	Standards, spikes, field blanks, lab and field duplicates	10% per batch/one cruise	Relative accuracy and precision; estimate of field contamination
Chlorophyll <i>a</i> (Chl <i>a</i> )	85-115%	15%	Standards, spikes, field blanks, field duplicates; semiannual audit	10% per batch/one cruise	Relative accuracy and precision; estimate of field contamination
Total Suspended Solids (TSS)	NA	15%	Standards, field blanks and duplicates; replicates averaged	10% per batch/one cruise	Precision; estimate of field contamination
Biological Oxygen Demand (BOD)	NA	15%	Field duplicate	10% per batch/one cruise	Precision

Table A7-3. Manufacturer's equipment specifications. Excerpted from YSI EXO User Manual Version K

	Conductivity	Temperature	Depth and Level	Dissolved Oxygen	pH	Turbidity	Total Algae (CHL A, PE)
Default Units	microSiemens/ centimeter	°Celsius	PSI, Depth (m, ft, bar)	% Saturation, mg/L	pH units C	FNU	RFU, µg/L Chl RFU, µg/L PE
Temperature <i>Operating</i> <i>Storage</i>	-5 to +50°C -20 to +80°C	-5 to +50°C -20 to +80°C	-5 to +50°C -20 to +80°C	-5 to +50°C -20 to +80°C	-5 to +50°C 0 to 60°	-5 to +50°C -20 to +80°C	-5 to +50°C -20 to +80°C
Range	0 to 200 mS/cm		<i>Shallow:</i> 0 to 33 ft (10 m) <i>Medium:</i> 0 to 328 ft (100 m) <i>Deep:</i> 0 to 820 ft (250 m) <i>Vented:</i> 0 to 33 ft (10 m)	0 to 500% air sat. 0 to 50 mg/L	0 to 14 units	0 to 4000 FNU	<i>Chl:</i> 0-100 RFU, 0-400 µg/L Chl*; <i>PE:</i> 0-100 RFU, 0-280 µg/L*
Accuracy	0-100 mS/cm: ±0.5% of reading or 0.001 mS/cm, whichever is greater; 100-200 mS/cm: ±1% of reading	-5 to 35°C: ±0.01°C 35 to 50°C: ±0.05°C	<i>Shallow:</i> ±0.04% FS (±0.013 ft or ±0.004 m) <i>Medium:</i> ±0.04% FS (±0.13 ft or ±0.04 m) <i>Deep:</i> ±0.04% FS (±0.33 ft or ±0.10 m) <i>Vented:</i> ±0.03% FS (±0.010 ft or ±0.003 m)	0-200%: ±1% reading or 1% air sat., whichever is greater; 200-500%: ±5% reading 0-20 mg/L: ±1% of reading or 0.1 mg/L; 20-50 mg/L: ±5% reading	±0.1 pH units within ±10°C of calibration temperature; ±0.2 pH units for entire temp range	0-999 FNU: 0.3 FNU or ±2% of reading, whichever is greater; 1000-4000 FNU: ±5% of reading <sup>2</sup>	
Response	T63<2 sec	T63<1 sec	T63<2 sec	T63<5 sec	T63<3 sec	T63<2 sec	T63<2 sec
Resolution	0.0001 to 0.01 mS/cm range-dependent	0.001°C	0.001 ft (0.001 m)	0.1% air sat. 0.01 mg/L	0.01 units	0-999 FNU: 0.01 FNU 1000-4000 FNU: 0.1 FNU	<i>Chl:</i> 0.01 RFU, 0.01 µg/L Chl; <i>PE:</i> 0.01 RFU, 0.01 µg/L
Sensor Type	4-electrode nickel cell	Thermistor	Stainless steel strain gauge	Optical, luminescence lifetime	Glass combination electrode	Optical, 90° scatter	Optical, fluorescence
Optics: Excitation						860±15 nm	CHL: 470±15 nm PE: 525±15 nm
Emission							685±20 nm
Linearity							<i>Chl:</i> R2>0.999 for serial dilution of Rhodamine WT solution from 0-400 µg/L Chl equivalents <i>PE:</i> R2>0.999 for serial dilution of Rhodamine WT solution from 0-280 µg/L PE equivalents

## **A8 Special Training Requirements/Certification**

Any CTDEEP staff member who participates in field operations will be trained, as needed, in each field function they will be required to perform (equipment handling, filtering tasks, titrations, etc.) and their performance closely observed. Training will be conducted by the technical project supervisor, the field operations manager, or their designee. All procedures for equipment handling, sample collections, and sample handling are documented in the *Long Island Sound Ambient Water Quality Monitoring Program Water Quality and Hydrographic Surveys Standard Operating Procedures Manual, 2022 (SOP) (Appendix A)*. All personnel that will assist with this monitoring will be required to review the SOP prior to participating in a survey, and all personnel will be supervised, at a minimum, the first two times any new task is performed. Staff will not be allowed to proceed unsupervised unless and until they have shown proficiency in each particular field activity. Proficiency will be based on the individual's ability to progress through each documented step of a procedure with no reminders and no errors in method. Of particular importance in field sample handling is avoiding sample contamination, maintaining well-mixed samples, accurate volume measurements, and accurate data recording. At least one permanent staff of the Program will be present on the vessel during field operations, so that new staff performance will continue to be evaluated. At least two fully trained staff will be present whenever staff-in-training are onboard the research vessel.

## **A9 Documentation and Records**

### Field Activities

Field crews currently record appropriate data on hardcopy field datasheets (Appendix A). All of the information contained on the Field Datasheet will be entered into the Program's database with the use of an electronic Field Datasheet Form, designed to resemble the hardcopy form. All field data will be entered into the electronic database form within one week of the end of each survey. This database form is designed with protections against incorrect entries (e.g., it will not allow duplicate station entries) and all field datasheets entries will be performed twice. A program to compare the two unique entries will then be used to find any typographic errors. Once any errors are corrected, the field data will be uploaded to the appropriate database table. This dual entry virtually eliminates the chances of typographical errors since any item that does not match between the two entries will be verified using the field datasheet. Limits will be placed on some of the entry fields as well (e.g., if air temperature entry falls outside the range [-10 - +35°C] text will appear: [temperature is not within reasonable range]). All latitude/longitude coordinates entered will be mapped to confirm they are within the expected area. Outliers are generally easy to pick out, for example when a 73° longitude is recorded instead of a 72, or vice versa.

The program is transitioning to using Survey 123 for field data collection. Standard Operating Procedures are being developed as well as quality assurance protocols. It is anticipated that side by side hard copy datasheets and S123 entry will occur for at least one year.

The profiler will generally be operated in real-time, allowing real-time capture of the data file in electronic form. When the profiler is not being operated in real-time, data files will be uploaded to the computer as soon as possible in the field to confirm that a complete file was obtained. Data files are saved to the sonde with autogenerated file names that include the sonde type, serial number, date,

and time logging began. The last 6 digits of the file name, representing the time logging began, are recorded on the field data sheets for easy identification later. Profile data files are reviewed and processed prior to upload to the Access database. Original, raw and processed profile files are maintained for archival once the final processed files are uploaded to the Program database.

A Data File Processing Record (Appendix A) is used to document the status of processing for each CTD file from any particular cruise. A Data Processing Cover Sheet (Appendix A) is used to document the status of all field data entry and profile file processing for a particular cruise. These two documents are filed with the original Field Datasheets, by cruise and year. Current procedure calls for maintenance of these paper files in full. Field Datasheets are also scanned and maintained in electronic format.

The Program database links all station/date specific data. All profile data records are uniquely identified by the Station Name, Cruise Name, and depthx10. All nutrient data are uniquely identified by the Station Name, Cruise Name, DepthCode (S, B, *etc*), and parameter.

#### Sample Custody Procedures

Sample labeling and custody procedures are discussed in Section B3, Sample Handling and Custody. Appropriate chain of custody paperwork will accompany all samples from collection to the analytical facility (Appendix A). Unique sample codes, consisting of the date, station name and sample depth code, will be assigned at the time of collection and recorded on the custody forms as well as on the field datasheet and on the sample container. A second unique sample number will be assigned at the laboratory and recorded on the custody forms, a copy of which will be retained by Program staff.

The analytical laboratory will provide data in agreed-upon electronic form. Electronic results files allow for direct transfer into the Program's database, eliminating the need for any manual data entry. The electronic report package will include a cover letter from the lab that notes any problems (*e.g.*, lab accidents, QA standards or holding times exceeded, *etc*) or unusual results and what, if anything, was done to confirm such values (*e.g.*, if a sample was re-analyzed, *etc*). The report package from the laboratory will also include the QA/QC data and copies of chain-of-custody forms that accompanied the samples. This report package should be submitted to the Program within 60 days of the receipt of all samples from a particular cruise. The laboratory will retain raw data files, including notebooks, calibration and calculation records. The Laboratory SOP (Appendix B) contains specific requirements for holding times and number and type of QC samples for each variable.

## **Section B: Data Generation and Acquisition**

### **B1 Sampling Process (Experimental) Design**

The Long Island Sound Ambient Water Quality Monitoring Program (the “Program”) is an established year-round monitoring program made up of two distinct surveys. The Monthly Water Quality Monitoring Survey (the “Monthly Survey”), and the Summer Hypoxia Monitoring Survey (the “Hypoxia Survey”).

Both surveys will continue to monitor established fixed stations (Table A-1). Stations will be located with the use of a programmable GPS system. Actual latitude/longitude coordinates at the time of profiler deployment will be recorded on the field data sheet.

All measurements are considered critical to the goal of establishing a long-term dataset capable of revealing potential influences and trends of water quality in Long Island Sound.

Instantaneous water column profiles will be obtained at every station visit with the use of a multi-parameter water quality monitoring instrument (currently a YSI EXO 2). These profiles will provide measurements of depth, water temperature, conductivity/ salinity, dissolved oxygen concentration, pH, turbidity, chlorophyll and fDOM (beginning late 2022). Water clarity will be evaluated with a 20 cm Secchi Disk.

#### **Monthly Survey**

The Monthly Survey will involve field sampling once per month at each of 17 fixed stations (Figure A-1 and Table A-1). Twelve stations are located along the deep-water axial transect of the Sound, beginning at Station A4 in the Western Narrows to the west, and extending eastward to Station M3 in the Race. Five stations are shallower, laterally placed stations in the Western and Central Basins.

In addition to the common field data/samples noted above, discreet surface and bottom water samples will be taken for dissolved and particulate nutrients (nitrogen, phosphorus, carbon and silica), chlorophyll *a*, suspended solids, and BOD analyses (Tables A7-1 and A7-2).

#### **Hypoxia Survey**

Hypoxia surveys occur during the months of June, July, August, and September (if warranted) to augment the regular monthly surveys. They occur approximately every other week, for a minimum of 3 sampling events. The mid-September survey will be conducted only if dissolved oxygen concentrations less than 3.5 mg/L are observed during the early (Monthly) September survey. Up to forty-eight (48) stations, including the 17 Monthly Survey sites will be sampled (Figure A6-1 and Table A6-1). Stations sampled during the Hypoxia surveys are concentrated in the Western Sound, where low dissolved oxygen concentrations have typically been most severe. An effort will be made to sample as many stations as possible given constraints of time and weather conditions. In some cases, when no hypoxia is observed in the western Sound or when the pattern of dissolved oxygen concentrations is evident from stations sampled (*e.g.*, a large area of western or central LIS with dissolved oxygen concentrations above 5.0 mg/L), stations in the far eastern part of the Sound, where dissolved oxygen concentrations generally do not fall below 5.0 mg/L, may not be sampled.

## B2 Sampling Methods

A full description of sampling methods is given in the *Long Island Sound Ambient Water Quality Monitoring Program, Water Quality and Hydrographic Surveys, Standard Operating Procedures Manual, 2022* (Program SOP) (Appendix A).

### Field Measurements

Field measurements are to be obtained according to the procedures outlined in the Program SOP, but methods are briefly summarized below and in Table B2-1.

The field measurements to be made include the following:

#### 1. Hydrographic Profile

A vertical water column profile of temperature, dissolved oxygen, conductivity/salinity, pH, chlorophyll, turbidity, and fDOM will be obtained at each station with the use of multi-parameter sonde (i.e., YSI EXO 2). The vertical profile starts at the surface and is continuous to the bottom. The profiler will generally be mounted on a General Oceanics Rosette Multibottle Array and deployed from the stern of the Research Vessel (currently the 50 ft R/V *John Dempsey*) with the use of a hydraulic net reel. When circumstances do not allow the use of the array, the profiler will be deployed from a starboard winch. Prior to conducting the downcast, the profiler will be allowed to equilibrate or “soak”, fully submerged near the surface. Once real-time readings visible on the shipboard laptop are stable, the profile downcast will then be conducted at a target rate of 0.2 meter/second, non-stop until the array reaches the bottom. The profile descent rate will be maintained as close to 0.2 meter/second as possible and will be monitored in real-time via the use of the on-board computer. The instrument will be programmed to record measurements at a rate of 2 per second. While upcast data are not recommended for general use and evaluation because optimal sensor (particularly dissolved oxygen) performance is not obtained, the upcast data will provide a duplicate profile. Details on operation, calibration, and maintenance of the CTD system can be found in the Program SOP (Appendix A).

#### 2. Maximum visible Secchi disk depth.

A 20 cm Secchi disk attached to a line calibrated in tenths of meters is lowered over the shady side of the vessel until it is no longer visible. The disk is then raised until it just reappears. The average of the two measurements to the nearest tenth of a meter is recorded on the field data sheet.

### Water Sample Collection

Water samples will be collected with the use of 5-liter Niskin water sampling bottles. The sampling bottles will generally be mounted on the General Oceanics Rosette Multibottle Array that allows for remote actuation of the sampling bottles. Sample bottles will be filled during the upcast. When circumstances do not allow the use of the array, sampling bottles will be mounted on a wire controlled by a starboard winch and triggered with messengers. Details on the handling and maintenance of the sampling bottles and the array, as well as details of sample handling can be found in the Program SOP (Appendix A).

### Monthly Survey

For the Monthly Survey, samples will be collected from two depths at each station for nutrient analyses. Bottom samples will be collected 3-5 meters above the sediment and surface samples will be collected two meters from the surface. Sampling bottles will be filled at each depth, consecutively, within seconds of each other, by remote actuation of sample bottles mounted on the array.

### Sample processing

Grab water samples collected with the Niskin bottles will be filtered (ideally on board the research vessel in the ship's onboard laboratory) prior to delivery to the analytical lab for particulate carbon/particulate nitrogen (PC/PN), chlorophyll-a (Chl-a), total suspended solids (TSS), particulate phosphorus (PP), and biogenic silica (BioSi). Filters will be stored in the onboard lab freezer until delivery to the lab at the end of the day.

Filtrate will be collected for dissolved fraction analyses of ammonium (NH<sub>4</sub>), nitrate+nitrite (NO<sub>3</sub>+NO<sub>2</sub> or NO<sub>x</sub>), total dissolved nitrogen (TDN), dissolved inorganic phosphorus/orthophosphate (DIP or PO<sub>4</sub>=), total dissolved phosphorus (TDP), dissolved organic carbon (DOC), and dissolved silica (SiO<sub>2</sub>) analysis.

All containers, including filtering flasks, that will come into contact with filtrate will be sample rinsed at least three times. This filtrate will be put into sample-rinsed labeled poly bottles provided by the analytical laboratory, and chilled or frozen for preservation in the onboard freezer until sample delivery to the lab at the end of the day. Whole water samples for BOD analysis will be drawn directly from Niskin sample bottles into one-half gallon poly jugs provided by the laboratory and chilled. Details on sample containers are provided in Table B3-1.

Details of sample processing are contained in the Program SOP (Appendix A).

**Table B2-1.** Summary of field methods for Long Island Sound Ambient Water Quality Monitoring Program basic water quality variables (see Program SOP, Appendix A).

<u>VARIABLE</u>	<u>FIELD METHOD</u>	<u>APPARATUS</u>	<u>UNITS</u>
Depth	Water column profile	YSI EXO2	Meters
Water Temperature	Water column profile	YSI EXO2	°C
Conductivity/ Salinity	Water column profile	YSI EXO2	PSU
Dissolved Oxygen	Water column profile	YSI EXO2	mg/L
Total Algae: Chlorophyll <i>a</i> and phycoerythrin	Water column profile	YSI EXO2	RFU and ug/L
pH	Water column profile	YSI EXO2	pH
fDOM	Water column profile	YSI EXO 2	QSU, ppb
Surface Water Clarity	Secchi depth	20 cm Secchi disk	Meters

All personnel that will assist with this monitoring will be required to review the SOP prior to participating in a survey, and all personnel will be supervised, at a minimum, the first two times any new task is performed. A copy of the SOP will always be present on the research vessel should a staff member need to refer to it. Sample processing and handling protocols related to the laboratory analyses for nutrients and chlorophyll *a* are specified by the analytical laboratory and included in the relevant laboratory guidance/SOP documentation (Appendix B). Operating procedures for blanks, spikes and replicates are also included in the laboratory SOPs.

The shipboard laboratory will provide freezer and chilled storage space, and the capability to filter small volume samples. Supply of small volume bottles and all necessary filters will be the responsibility of the analytical laboratory.



## **B3 Sample Handling and Custody**

### **Field Data Recording**

Currently, field crews record most of the raw field data on hardcopy datasheets (Appendix A). The Program is in the process of transitioning to utilizing Survey 123 for field data collection. SOPs are being prepared and data are being input into both the App and on the hardcopy data sheets. It is anticipated that the transition will be completed by the start of 2023. An Addendum to the QAPP will be completed at such time and submitted to EPA for approval.

Currently, all field data that are not in electronic form are transcribed into an electronic database format generally within one week of the survey end date. The Program database has a Field Data Sheet Entry Form (Appendix A), to be used for all data entry that closely matches the hardcopy forms. All data entry is performed twice. The two comparable entry logs will then be run through an in-house macro that compares each datum. Any differences between the two entries will cause a review of the hardcopy Field Data Sheet to determine the correct datum. The Field Datasheet Table in the database will then be updated with the final corrected Entry Form.

The profiling instruments have internal electronic file storage, and these files, if not recovered directly to the onboard computer in real-time, will be downloaded following the cast.

### **Sample Identity Codes**

All station visits will be uniquely identified by the Station Name and the Cruise Name. In the Program database these two items are consistently used as primary keys; they are required, and no matching combinations are allowed. All nutrient data will be further identified by the Depth Code (“S” for Surface, “B” for Bottom) and the Variable measured.

Sample containers (Table B3-1) to be used to store and deliver samples to the nutrient analytical lab will be labeled in the field with Station Name, Depth Code, Cruise Name, Date, and the variable/variables to be measured. Details and example labels are provided in the Program SOP (Appendix A).

### **Chain of Custody Forms**

Sample chain-of-custody (COC) forms will accompany each delivery of samples to the analytical laboratory (example provided in Appendix A). COC forms will generally be prepared ahead of time with Station Names and Depth Codes (*e.g.*, B3S = Station B3 Surface water) based on the typical three or four-day station visit plan. The volume of sample filtered, where applicable, and the filter identification number for TSS samples will be recorded on the COC forms by the field crew. The laboratory will log in all samples when they take possession, assigning a unique laboratory ID number to each unique sample. Laboratory ID numbers will be recorded by the laboratory staff directly on the COC forms and a completed copy returned to Program staff.

**Table B3-1.** General summary of sample containers, preservation, and holding times for the Long Island Sound Ambient Water Quality Monitoring Program water quality indicators sample analyses (see Program SOP, Appendix A, and Laboratory SOPs, Appendix B, attached). Sample container volume may vary as per laboratory.

<u>VARIABLE</u>	<u>SAMPLE TYPE</u>	<u>SAMPLE CONTAINER</u>	<u>PRESERVATION METHOD</u>	<u>HOLDING TIME</u>
Ammonia (NH <sub>3</sub> )	Filtrate	250-ml poly bottle with lid (single filtrate bottle used for six variables; or as per lab)	Sample frozen	28 days
Nitrate + Nitrite (NO <sub>3</sub> <sup>-</sup> ) + (NO <sub>2</sub> <sup>-</sup> )	Filtrate	250-ml poly bottle with lid	Sample frozen	28 days
Total Dissolved Nitrogen (TDN)	Filtrate	250-ml poly bottle with lid	Sample frozen	28 days
Particulate Nitrogen (PN)	25mm 0.7um GF/F filter	aluminum foil packet; 2 duplicate filters per packet	Sample frozen	28 days
Orthophosphate (PO <sub>4</sub> <sup>3-</sup> )/ Dissolved Inorganic Phosphorus (DIP)	Filtrate	250-ml poly bottle with lid	Sample frozen	48 hours
Total Dissolved Phosphorus (TDP)	Filtrate	250-ml poly bottle with lid	Sample frozen	28 days
Particulate Phosphorus (PP)	47mm 0.7um GF/F filter	aluminum foil packet; 2 duplicate filters per packet	Sample frozen	28 days
Dissolved Organic Carbon (DOC)	Filtrate	250-ml poly bottle with lid	Sample frozen	28 days
Particulate Carbon (PC)	25mm 0.7um GF/F filter	aluminum foil packet; 2 duplicate filters per packet	Sample frozen	28 days
Dissolved Silica (SiO <sub>2</sub> )	Filtrate	125-ml poly bottle with lid	Sample chilled/frozen	28 days
Particulate (Biogenic) Silica (BioSi)	47mm 0.4um polycarbonate filter	50-ml poly centrifuge tube with lid	Sample frozen	28 days
Chlorophyll <i>a</i> (Chl <i>a</i> )	25mm 0.7um GF/F filter	aluminum foil packet; 2 duplicate filters per packet	Sample frozen	30 days
Total Suspended Solids (TSS)	47mm 0.7um GF/F filter	pre-labeled, filter-specific aluminum cup	Sample frozen	7 days
Biological Oxygen Demand (BOD)	Whole water	1.89-liter poly jug with lid	Sample chilled	24 hours

## **B4 Analytical Methods**

Filters, filtrate, and whole water samples prepared on the research vessel (see Program SOP, Appendix A) will be delivered daily, or frozen and shipped immediately following the completion of a 3–4-day survey, to the nutrient analytical laboratory. The Laboratory will conduct all analyses in accordance with generally accepted laboratory procedures and in keeping with their SOP (Appendix B). Appropriate QC samples will be run with each batch of samples, typically all the samples from a single cruise. Table B4-1 summarizes field and analytical methods and associated detection limits.

**Table B4-1.** Summary of field and analytical methods for Long Island Sound Ambient Water Quality Monitoring Program water quality indicators sample analyses (see Program SOP, Appendix A, and Laboratory SOP, Appendix B).

<u>VARIABLE</u>	<u>FIELD METHOD</u>	<u>ANALYTICAL METHOD</u> description and Method Ref. No.	<u>DETECTION</u> <u>LIMIT</u>
Ammonia (NH <sub>3</sub> )	Filtration, generally 500mL; 47mm/0.7um GF/F; filtrate frozen	automated ion analyzer/colorimetric; EPA 350.1	0.002 mg/L
Nitrate + Nitrite (NO <sub>3</sub> <sup>-</sup> ) + (NO <sub>2</sub> <sup>-</sup> )	Filtration, generally 500mL; 47mm/0.7um GF/F; filtrate frozen	automated ion analyzer/colorimetric; EPA 353.2	0.002 mg/L
Total Dissolved Nitrogen (TDN)	Filtration, generally 500mL; 47mm/0.7um GF/F; filtrate frozen	persulfate oxidation; automated ion analyzer/colorimetric; EPA 353.2	0.040 mg/L
Particulate Nitrogen (PN)	Filtration, generally 200mL; 25mm/0.7um GF/F; filter frozen	high temperature combustion; CHN elemental analyzer; EPA 440.0	0.010 mg/L
Orthophosphate (PO <sub>4</sub> <sup>3-</sup> )/ Dissolved Inorganic Phosphorus (DIP)	Filtration, generally 500mL; 47mm/0.7um GF/F; filtrate frozen	automated ion analyzer/colorimetric; EPA 365.2	0.002 mg/L
Total Dissolved Phosphorus (TDP)	Filtration, generally 500mL; 47mm/0.7um GF/F; filtrate frozen	persulfate oxidation; automated ion analyzer/colorimetric; EPA 365.1	0.002 mg/L
Particulate Phosphorus (PP)	Filtration, generally 200mL; 25mm/0.7um GF/F; filter frozen	acid (HCl) extraction; automated ion analyzer/colorimetric; EPA 365.1	0.001 mg/L
Dissolved Organic Carbon (DOC)	Filtration, generally 500mL; 47mm/0.7um GF/F; filtrate frozen	high temperature combustion; non- dispersive infrared analyzer; EPA 415.1	0.5 mg/L
Particulate Carbon (PC)	Filtration, generally 200mL; 25mm/0.7um GF/F; filter frozen	high temperature combustion; CHN elemental analyzer; EPA 440.0	0.010 mg/L
Dissolved Silica (SiO <sub>2</sub> )	Filtration, generally 200mL; 47mm/0.4um polycarbonate filter; filtrate chilled	automated ion analyzer/colorimetric; EPA 370.1	0.025 mg/L
Particulate (Biogenic) Silica (BioSi)	Filtration, generally 200mL; 47mm/0.4um polycarbonate filter; filter frozen	heated NaOH digestion; automated ion analyzer/colorimetric; EPA 370.1	0.010 mg/L
Chlorophyll <i>a</i> (Chl <i>a</i> )	Filtration, generally 200mL; 25mm/0.7um GF/F; filter frozen	CH <sub>3</sub> COCH <sub>3</sub> (MgCO <sub>3</sub> ) extraction; fluorometric analysis; EPA 445.0	0.075 ug/L
Total Suspended Solids (TSS)	Filtration, generally 500mL; 47mm/0.7um GF/F; filter frozen	gravimetric; EPA 160.2	1.0 mg/L
Biological Oxygen Demand (BOD)	whole water sample chilled	oxygen consumption via dissolved oxygen measurements at intervals from 5 through 30 days	0.5 mg/L

## **B5 Quality Control**

### Field QC Requirements

Field QC is associated with site location, collection and handling of water samples, and direct measurements including the profile and Secchi depth.

### Station Location

Navigation throughout the survey period will make use of vessel-mounted differential GPS. Sampling location will be recorded while the profiling unit is coming to equilibrium, or “soaking”, in the surface water, just prior to the start of the downcast, as coordinates of latitude/longitude in degrees-minutes, expressed to the nearest 0.01 minute (i.e., 00°00.00'). Horizontal accuracies of 0.02 nautical miles are expected with repeatability in excess of this value.

In cases where equipment deployment may pose some risk to Program vessel or equipment, or to another’s property, the crew is allowed to relocate to the nearest location of similar depth ( $\pm 20\%$ ) where sampling can be conducted without unusual risk. This can occur, for example, when lobster pot strings are deployed near a station.

### Water Column Profile Measurements

The quality control related to profiler use includes routine calibration and maintenance (Table A7-1). The profiling units will be calibrated prior to and/or after each survey. SOPs specific to the use and calibration of the YSI EXO2 are in the Program SOP (Appendix A). DO sensor caps have a typical life of 12 months, after which the cap should be replaced by the user. pH sensor modules should be replaced every 12-18 months or as needed due to the depletion of the electrolyte solution within the module. The entire sonde should be returned to the manufacturer biennially for inspection, calibration, and routine maintenance. The YSI units have the advantage of sensors that are field-replaceable, helping to minimize data gaps due to sensor failures.

### Nutrient Samples

Table A7-2, the Program SOP (Appendix A) and the Lab SOPs (Appendix X) detail the quality assurance measures undertaken for grab samples collected by the Program and analyzed by the commercial contract laboratory for nutrient parameters. Surface water field duplicate samples are collected by Program staff at specified stations (A4, E1, M3) equating to 10% of the station visits. One field blank per day is also collected. The analytical laboratories utilize reference standards, spikes, lab blanks, and lab duplicates to assure high quality results are returned.

## **B6 Equipment Testing, Inspection and Maintenance**

### Preventative Maintenance

Preventative maintenance for all equipment is performed as per manufacturer's instructions and recommended schedule/frequency of performance in order to maintain equipment in good working condition and minimize downtime for all field and laboratory equipment. All preventative maintenance and repairs are performed either by qualified field or lab personnel or by the manufacturer's service engineers. An inventory of spare parts and consumables is maintained to an extent that is sufficient to maintain the operation of all equipment. Except for

standard hardware, spare parts are obtained from the manufacturer or their representative or distributor.

### Inspection

All equipment is inspected prior to each survey to assure it is in good working order. Any equipment found to be broken or malfunctioning is taken out of service and replaced as appropriate.

## **B7 Instrument/Equipment Calibration and Frequency**

### Calibration Procedures

#### Field Equipment

The shipboard instruments will be maintained in accordance with the guidelines provided by the manufacturer.

The profilers will be operated, maintained, and serviced in accordance with the guidelines provided by the manufacturer. Generally, the units are returned to the manufacturer at approximately 1-year intervals for sensor calibration and general maintenance as recommended by the manufacturer. Two identical units are available and are identified by unique serial numbers so that maintenance or factory calibration will not affect the survey schedule as they will be on alternate maintenance schedules.

All sensors will be calibrated by a permanent Program staff at least monthly, and/or prior to each survey, according to the manufacturer's instructions. All calibration records are maintained on the sondes as well as on hardcopy paper sheets in a calibration log binder kept in the water prep lab at 9 Windsor Ave, Windsor, CT. Hardcopy sheets are maintained indefinitely or as directed in the Department's Records Retention Policy. All chemicals/standards used in the calibrations are obtained from the instrument manufacturer or from vendors of scientific supplies.

#### Laboratory Equipment

All laboratory instrument usage, maintenance, calibration, troubleshooting and service are performed according to the procedures documented in each laboratory's SOP (current versions attached as Appendix B). All chemicals are obtained from the instrument manufacturer or from vendors of scientific supplies. Where appropriate, an instrument logbook is used to record all maintenance and calibration activities.

## **B8 Inspection of Supplies**

Field supplies with definite shelf life will have expiration dates recorded directly on the container and stock will be rotated to ensure the availability of fresh chemicals at all times. An inventory of chemicals and supplies on the research vessel (see Appendix A) allows field staff to ensure that a record of supplies needed is available for subsequent survey preparation activities.

Laboratory supplies and stock solution preparations are documented in each laboratory's SOP (Appendix B).

### **B9 Nondirect Measurements**

Nondirect measurement data (tide stage and precipitation, stream flow data) obtained from the National Oceanic and Atmospheric Administration and the United States Geological Survey via their official websites may be utilized in the interpretation of data collected by this Program.

Additional nondirect measurement data to be used will be those data previously collected by the Program. These data collected using the same methods and under previously approved QAPPs, are used during data review and assessment as they provide for expected parameter ranges. Such provision is not absolute however; previously observed ranges are used only as a guide. No datum will be rejected solely because it does not fall within the previously measured range.

### **B10 Data Management**

All Program data will be managed in an established, electronic Program database.

#### **Field Data**

From 1991-2022 field crews recorded most of the raw field data on hardcopy datasheets (Appendix B). All field data that is not in electronic form will be transcribed into an electronic database format generally within one week of the survey end date. The Program database (currently in Microsoft Access) has a Field Data Sheet Entry Form (Appendix B), to be used for all data entry that closely matches the hardcopy forms. All data entry will be performed twice, ideally two different staff members will each perform one entry. The two comparable entry logs will then be run through an in-house macro that compares each datum. The process is tracked by forms designed to ensure that all data are reviewed completely (Appendix B). Any differences between the two entries will cause a review of the hardcopy Field Data Sheet to determine the correct datum. Once data are verified to have been entered correctly, they are uploaded to the database and the Field Datasheet Table in the database is updated with the final corrected Entry Form.

Beginning in late 2022, field crews are also entering raw field data directly into Survey 123, a data collection app by ESRI, in real-time aboard the vessel. The Program will be moving away from handwritten hard copy data sheets to using this electronic version. The objectives are to reduce data entry errors, transcription errors, and be more environmentally friendly through reduced paper consumption. Additionally, the App allows data to be input into GIS software and dashboards for increased data visualization and public use. Standard Operating Procedures are being developed, as are quality assurance procedures. Once finalized, an Addendum/Update to this QAPP will be provided to EPA.

The profiling instruments have internal electronic file storage, and these files, if not recovered

directly to the onboard computer in real-time, will be downloaded following the survey, generally within one week. Processing of profile data and upload to the Program database is in accordance with Program Data Processing SOPs.

All data will be uploaded to EPA's Water Quality Exchange (WQX) for retrieval by the public through the Water Quality Portal.

#### Sample Identity Codes

All station visits will be uniquely identified by the Station Name and the Cruise Name. In the Program database these two items are consistently used as primary keys; they are required, and no matching combinations are allowed. All nutrient data will be further identified by the Depth Code ("S" for Surface, "B" for Bottom) and the Variable measured. Samples containers to be used to store and deliver samples to the analytical laboratory will be pre-labeled with Station Name, Depth Code, Cruise Name, Collection Date, and the variable/variables to be measured.

#### Chain of Custody Forms

Sample chain-of-custody (COC) forms will accompany each delivery of samples to the analytical laboratory (Appendix B). COC forms will generally be prepared ahead of time with Station Names and Depth Codes (*e.g.*, B3S = Station B3 Surface water) based on the typical three or four-day station visit plan. The volume of sample filtered, where applicable, and the filter identification number for TSS samples will be recorded on the COC forms by the field crew.

The laboratory will log in all samples when they take possession, assigning a unique laboratory ID number to each unique sample. Laboratory ID numbers will be recorded by the laboratory staff directly on the COC forms and a completed copy returned to Program staff.

#### Data Transformation

The only data that are transformed are the in-situ chlorophyll a data collected with the multiparameter sonde. Chlorophyll a data from the analytical lab are utilized to adjust the sonde data through the use of a linear regression. Transformed data are reported in the database as *Corrected Chlorophyll*, along with the original, raw data, so that data users may employ their own transformation if they desire.

#### Laboratory Data Validation

Procedures for laboratory data validation are contained in each laboratory's SOP (current laboratory SOP, UCONN/CESE, Appendix B). After having undergone all validation procedures at the laboratory, the data are provided to the CTDEEP Program staff.

Analytical and related quality control data are reviewed and validated by the Program data management personnel prior to entry into the Program database. Generally, the electronic files received from the analytical laboratory are compatible with the Program database.



## **Section C: Assessment/Oversight**

### **C1 Assessments and Response Actions**

Field operations lead will be responsible for field and data-entry staff training, review of field and data processing performance, and making corrections. The quality assurance officer will perform regular data review and report issues to the field/database lead. The technical project supervisor will be responsible for field and office audits to ensure that data collections and manipulation are ongoing and in adherence to the quality assurance plan.

### **C2 Reports to Management**

Progress reporting of overall project activities will be submitted as part of CTDEEP's LISS Semi-annual Performance Reports to EPA, and other LISS reporting by the CTDEEP LISS Coordinator, or as requested by EPA Project Officer. Summertime Hypoxia Survey progress will be reported via biweekly cruise summaries.

## **Section D: Data Validation and Usability**

### **D1 Data Review, Validation, and Verification**

Section B10, Data Management, describes data handling procedures in the field, laboratory, and program office that take place prior to survey data becoming part of the Program database.

Once data are uploaded to the electronic database Program staff review the data for completeness, outlying or suspect values, comparability of nutrient parameters (TDN > NH<sub>3</sub> + NO<sub>x</sub>, etc.), and to apply any problem codes necessary to the data. Problem data are flagged, but reported values generally remain in the database. Each flag includes a description of the apparent or suspected problem with the datum. All problem data are reported to laboratory QA staff with a request for a) repeat of sample analysis if an archived sample is available; or b) a review of associated laboratory documentation to confirm the reported result.

After being scrutinized during the data entry phase, data are analyzed and plotted to examine any outliers or anomalies. These are examined, verified, and corrected if necessary. Field audits are performed by the Field operations lead to assure that all data are collected according to standard operating procedures, and that the collection effort is consistent. All field logs and information will be thoroughly reviewed prior to data analysis to assure that all data were collected uniformly. Any datum collected outside of the standard operating procedures will be examined to determine whether it is representative.

All quality assurance data and reports will be examined prior to data analysis to verify that data were properly and consistently collected. Any deviations in data collection will be considered during data analysis. All calibration logs will be examined to determine how well the measurement instruments performed. If there appears to be significant drift in instrument

performance, it will be determined whether an adjustment is possible. All raw data files will be kept. Original (unmanipulated) data will be retained by CTDEEP.

Except for the chlorophyll a data transformation described in Section B10 above, data reduction will only occur as part of a data report where data are summarized for ease of presentation and to focus on patterns and trends. The Program database, in its entirety, will continue to be available upon request. It is also a goal of the Program to upload all validated data to EPA's WQX data warehouse within one year of collection for wider public dissemination of the data collected by the program.

## **D2 Validation and Verification Methods**

Current practices require field data to be entered directly onto hard copy paper field data sheets. All data sheets will be validated in the field for accuracy. The data sheets from a single cruise will be maintained in Program files together with a *Data Processing Cover Sheet* (Appendix A) that documents the status of data processing to the Program database. As noted above in Section B10, the Program is transitioning to using Survey123, an electronic field data collection application; updates will be provided in a QAPP Addendum or revision upon.

The consistent application of methods provided in the Program SOPs (Appendix A) and this QAPP provides good certainty that the data are both valid and usable. Any missing samples or laboratory accidents will be reported to record completeness and results will be further reviewed to be sure they are consistent with expected parameter ranges in Long Island Sound.

Any unusual observations will be reviewed by CTDEEP staff involved in the project and, if warranted, outside expertise will be consulted to resolve any problems with data validation and usability.

## **D3 Reconciliation with Data Quality Objectives**

Each survey's data will be reviewed by DEEP Program staff for completeness, compliance with QAPP, correctness, and consistency. Unusual or unexpected results will be reviewed, and a determination made as to data usability. Data summaries including annual means, seasonal and long-term trends will be reviewed and evaluated for long term project success. Data will be made available upon request to EPA or designees for further review.

## **APPENDIX A**

### CTDEEP Long Island Sound Ambient Water Quality Monitoring Program Standard Operating Procedures Manuals

(including Field procedures, Field datasheets, Chain-of-Custody Forms/delivery records,  
Field data processing procedures, CTD Data processing guide, Database forms, etc.)

## **APPENDIX B**

Contract Laboratories  
Laboratory SOP

University of Connecticut  
Center for Environmental Science and Engineering  
Laboratory Standard Operating Procedures