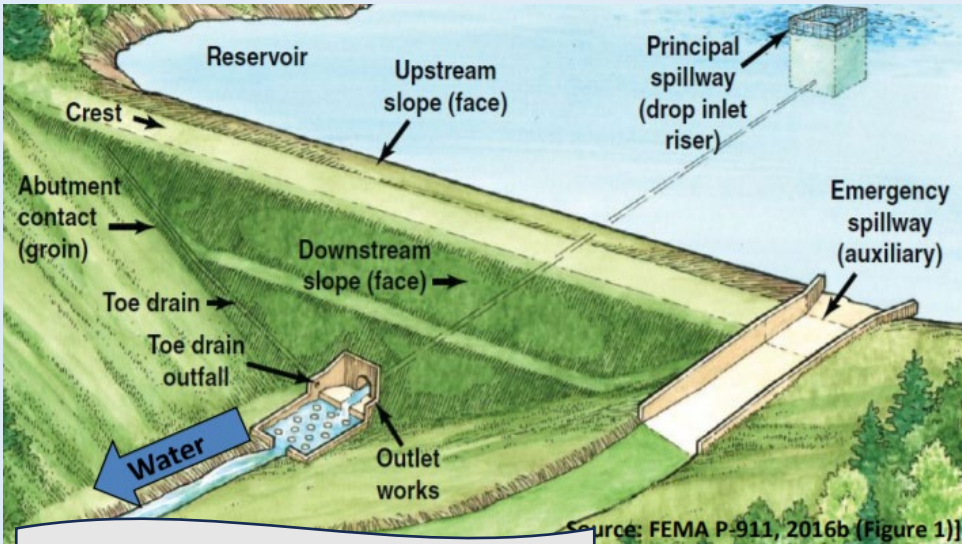




Dam Safety Program

“Dam” means any barrier of any kind whatsoever which is capable of impounding or controlling the flow of water, including but not limited to storm water retention or detention dams, flood control structures, dikes and incompletely breached dams.



Get to know a dam



Dams can vary in sizes!

Did you know?
That each registered dam has:

- A Dam ID number
- Name
- Hazard classification
- Condition

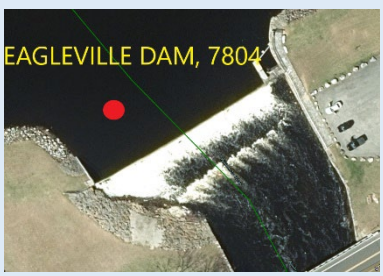
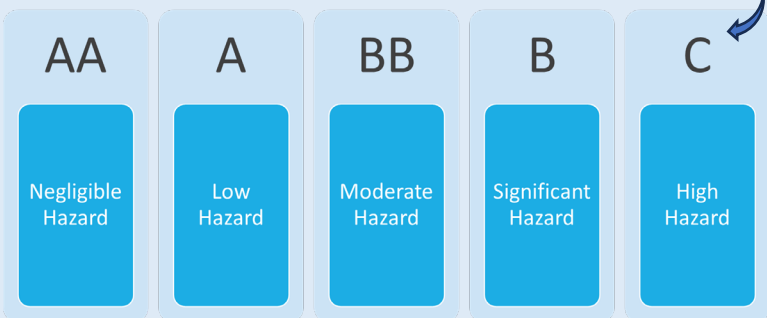
Conditions of Dams

- Satisfactory
- Fair
- Poor
- Unsatisfactory

Uses of Dams

- ✓ Irrigation
- ✓ Flood Storage
- ✓ Hydropower
- ✓ Water supply
- ✓ Livestock Water Supply
- ✓ Recreational Use

Dam Hazard Classifications



Want to know if you have a Dam near you?
Check out the GIS mapper!
Located on the Dam Safety website

A dam owner is responsible for:

- ✓ Registering their dam with the Dam Safety Program
- ✓ Recording B and C hazard class dams on municipal land records
- ✓ Maintaining their dam in safe condition
- ✓ Making repairs to their dam with appropriate permits
- ✓ Conducting regulatory inspections with a professional engineer
- ✓ Having an Emergency Action Plan for B and C hazard class dams
- ✓ Notifying the Dam Safety Program about ownership changes for the dam



Visit the Dam Safety Program website at <https://portal.ct.gov/deep/water/dams/dams-safety>

The Dam Safety Program at the CT Department of Energy and Environmental Protection regulates all state, privately, and municipally owned dams in the state! Questions are always welcome!

The Dam Safety Program can be reached at DEEP.Damsafety@ct.gov or via phone at 860-424-3706



Dam Safety Program

Frequently Asked Questions

1. Who is responsible for inspecting, monitoring, maintaining, and repairing dams?

The dam owner is responsible for maintaining their dam, hiring an engineer to inspect the dam, and for making repairs to the dam with appropriate permits.

2. If I have a concern with a dam, whom do I call?

You can call the Dam Safety Program at 860-424-3706 or email us at DEEP.DamSafety@ct.gov

3. If a dam owner is not responsive, does DEEP have any enforcement authority?

Yes, the Dam Safety Program follows the Department's enforcement policy.

4. How often are dams inspected?

Each dam has a hazard classification, the hazard classification determines how often a dam is inspected. The inspection frequency ranges from 2-10 years. For more information on inspection reports please visit:

<https://portal.ct.gov/deep/water/dams/dam-inspections>

5. What dams are required to have an Emergency Action Plan? Where can I get a copy?

Hazard Class B (Significant) and C (High) dams are required to submit an Emergency Action Plan. The Emergency Action Plan can be accessed by contacting the Dam Safety Program.

6. Can a dam owner lower water levels in the impoundment before a storm?

Adjusting the water level before and after storm events is subject to the Connecticut Water Diversion Policy Act Statute Section 22a-365. Flow of the water and the water surface elevation of impoundments with a drainage area of 100 acres or more cannot be changed without a Water Diversion Permit. As the dam owner, if you plan to lower the water level before storm events, then you should apply for a CT DEEP Water Diversion Permit and contact the CT DEEP Fisheries Division (deep.inland.fisheries@ct.gov). For water diversions proposed on impoundments with a drainage area less than 100 acres, please contact the local municipality for permitting requirements. For further inquiries and questions please contact the Land and Water Resources Division (860-424-3019). All drawdown notifications should be sent to the Dam Safety Program (DEEP.DamSafety@ct.gov).

7. Who do I contact for beaver problems?

There is information and resources about removing the beaver on this website: <https://portal.ct.gov/DEEP/Wildlife/Nuisance-Wildlife/Problems-with-Beavers>

8. Can the dam owner make repairs to their dam without notifying the Dam Safety Program?

No, most repairs to dams require permits. Certain dam repair activities can be authorized under a Dam Safety General Permit while others may need a Dam Safety Individual Permit. Please contact the Dam Safety Program or visit the website for more information.

9. How do I know the hazard classification of a dam?

The hazard classification of a dam is determined by what would be impacted downstream if the dam were to fail. The determination can be made by a professional engineer by performing a dam breach analysis.

10. How do I register a dam?

Dams can be registered using the dam registration form, please contact the Dam Safety Program for a copy. Dams already registered with our program can be found on our registration page here:

<https://portal.ct.gov/deep/water/dams/dam-registration-and-dam-records>

11. What if I am buying/selling a property with a dam on it?

The dam owner must disclose that there is a dam on their property and notify the Dam Safety Program about the ownership change. Effective October 1, 2021, the Residential Property Condition Disclosure Report was amended to include a question relating to dams (See Public Act 21-41). Sellers of residential property will now be required to disclose whether there is a dam on the property, and, if so, include a statement advising buyers that information relating to registration of the dam can be obtained from the Connecticut DEEP.

Residential Property Condition Report: <https://portal.ct.gov/-/media/dcp/forms/2021---residential-property-condition-report-final-revised.pdf>

12. How do I know if there is a dam near me?

The Dam Safety Program website hosts a GIS mapper which locates privately/state owned dams in Connecticut ([Dams Public Viewer Application \(arcgis.com\)](#))

13. If there is a dam emergency outside of normal business hours, whom do I contact?

Please call DEEP Dispatch at 860-424-3333.

Please note that for record information on dams you may email the Dam Safety Program at DEEP.DamSafety@ct.gov to view electronic files or book a file review appointment to view paper files.