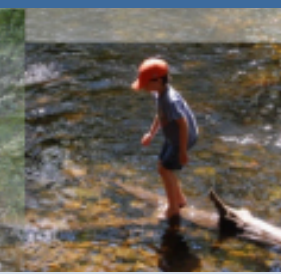
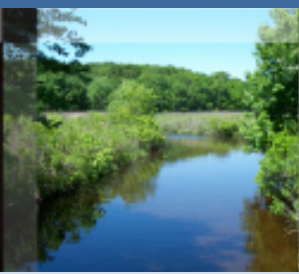




Connecticut Department of Energy and Environmental Protection



Connecticut Department of
**ENERGY &
ENVIRONMENTAL
PROTECTION**

Radiation Detection at Resource Recovery Facilities

April 26, 2016

Jeff Semancik and Mike
Firsick

Solid Waste Advisory
Committee Meeting



Connecticut Department of Energy and Environmental Protection

Where We Have Been

- Incoming Load Sets Off Alarm
- DEEP Radiation Division Responds On-Scene
- DEEP Radiation Adjudicates Alarm



Where We are Today



State budget director Ben Barnes observed that Connecticut has "entered into a period of permanent fiscal crisis in state and local government."



Where We Are Today

- DEEP Radiation Division Staffing Level's Reduced by 50%
- Continued 100% On-Scene Response Unsustainable
- “Unfunded Mandate”



Where We Are Today

- Focus on Core Mission
- Statutorily Driven



Where We Are Going

- Self Determination
- Refuse the Load
- Hire a Consultant



Where We Are Going

- Self Determination:
- On-Site Staff take measurements using Gamma Ray Spectroscopy instrument
- E-mail spectrum to CT DEEP Radiation
- We evaluate it during regular work hours.



Where We Are Going

- Refuse the load- Contact DEEP Radiation
- We write up a US DOT Exemption
- We E-Mail or FAX it back to you
- Send load away
- Done during normal work hours




Where We Are Going

← → http://www.crcpd.org/%5C/Transportation/Exemptions/11 ↻ http://www.crcpd.org

File Edit Go to Favorites Help

August 28, 2015


U.S. Department
of Transportation

East Building, PH4-30
1200 New Jersey Avenue S.E.
Washington, D.C. 20590

Pipeline and Hazardous
Materials Safety Administration

DOT-SP 11406
(NINTH REVISION)

EXPIRATION DATE: May 31, 2019

(FOR RENEWAL, SEE 49 CFR § 107.109)

1. **GRANTEE:** Shippers and carriers of liquid or solid waste (henceforth called "waste") with low levels of external radiation who are approved by state radioactive material control officials registered with the Office of the Executive Director of the Conference of Radiation Control Program Directors (CRCPD), Frankfort, Kentucky
2. **PURPOSE AND LIMITATION:**
 - a. This special permit authorizes the one-way transportation in commerce by highway or rail of shipments of liquid or solid waste (hereafter referred to as "waste") in accordance with the conditions and requirements of set forth below, when:
 - (1) during or at the conclusion of transportation or during inspection of the shipment following its receipt, the waste has been found to contain unexpected and unidentified radioactive material or contamination; and
 - (2) the waste is transported to a location determined by the authorizing state official to be more appropriate for proper characterization and/or disposition of the discovered radioactivity.
 - b. This special permit provides no relief from the Hazardous Materials Regulations (HMR) other than as specifically stated herein.
 - c. The safety analysis performed in the development of this special permit only considered the hazards and risks associated with transportation in commerce.
 - d. Party status will not be granted to this special permit.



Connecticut Department of Energy and Environmental Protection

Where We Are Going

Hire a Consultant

Fee's

Time Commitment



Where We Are Going

- DEEP Radiation will no longer be dispatching after end of this June.
- Will continue to dispatch under certain conditions-
- Dose rates > 50 mrem/hr on contact with the vehicle
- Non-medical Isotope determined



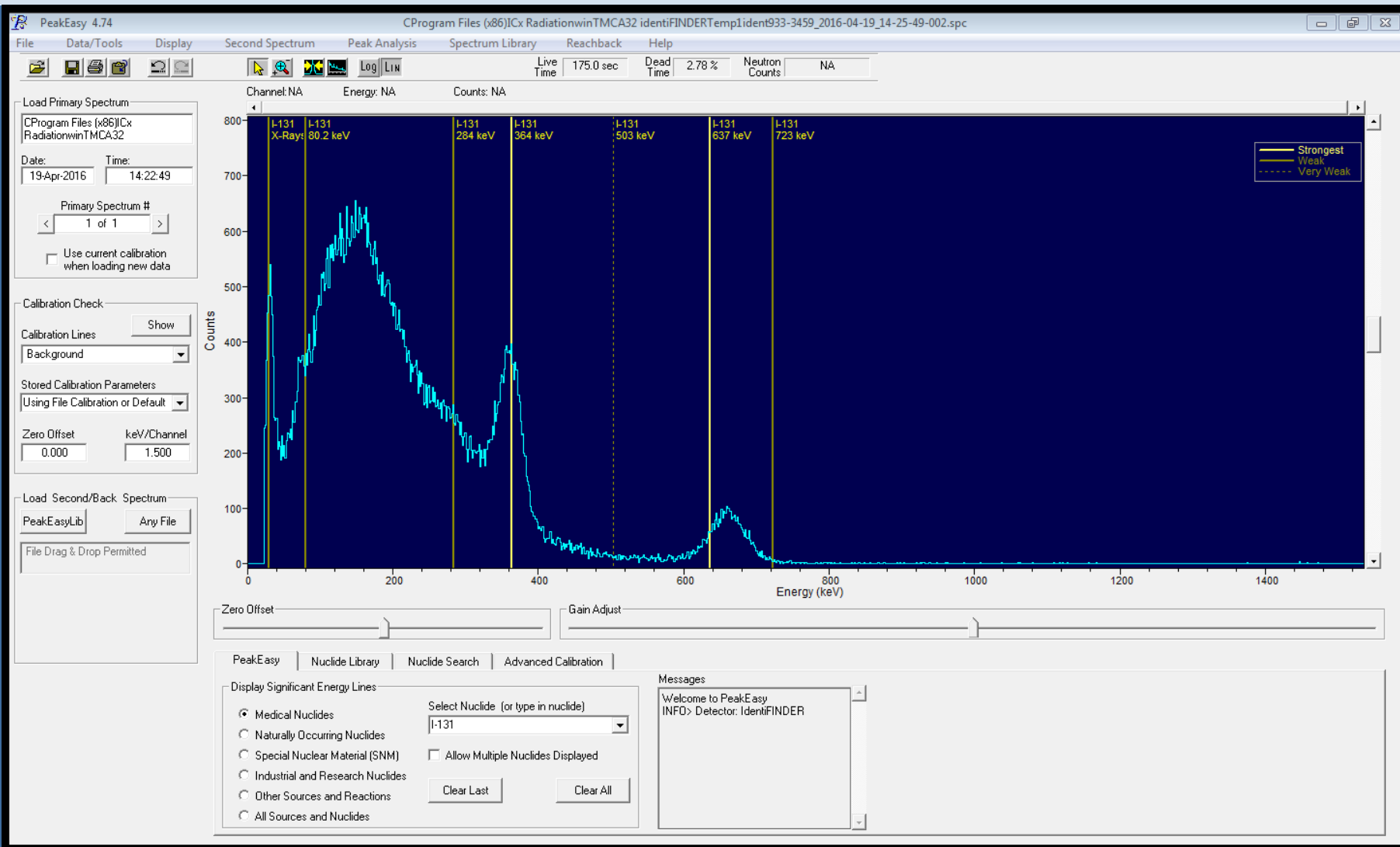
Where We Are Going

Continue to Reiterate to Medical Community the importance of patient awareness

- Pilot Program with Bridgeport RESCO
- Has been working successfully since mid-February



Where We are Going



Questions?

Jeff Semancik/Mike Firsick

Director/Supervisor-DEEP Radiation

Semancik, Jeffrey

Jeffrey.Semancik@ct.gov

Firsick, Michael

Michael.Firsick@ct.gov

