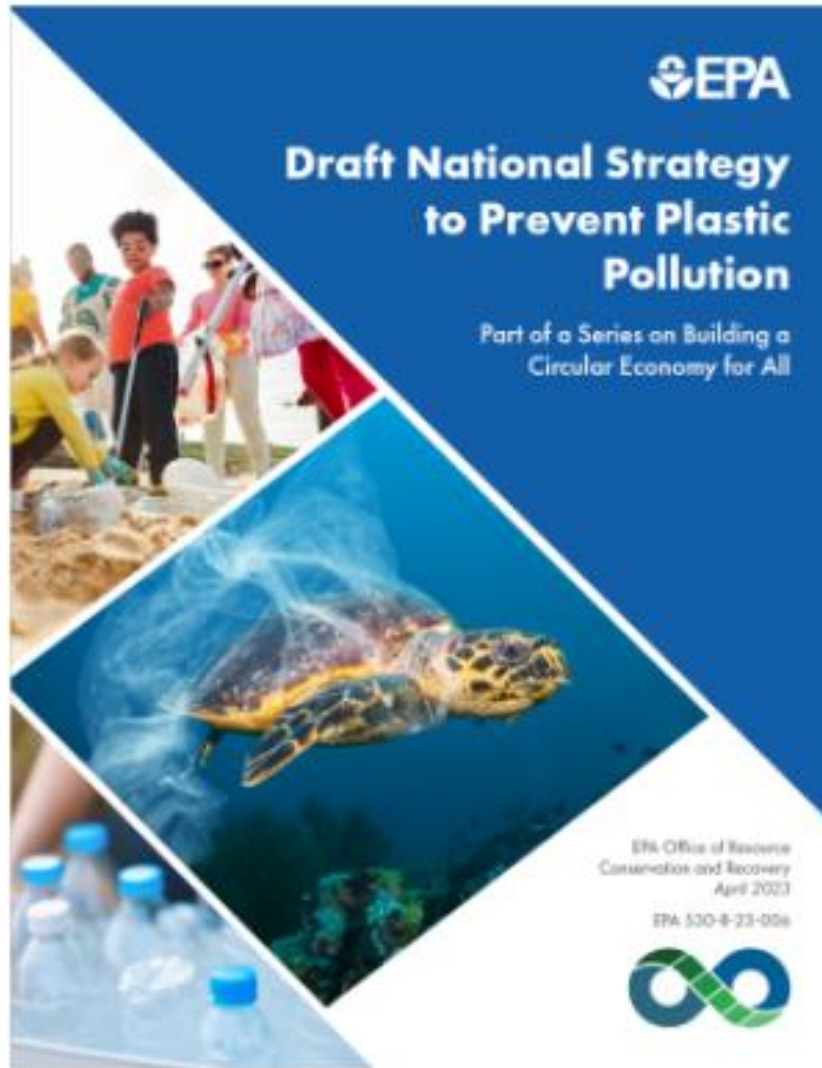


# USEPA UPDATE

4-25-2023

---

[beling.christine@epa.gov](mailto:beling.christine@epa.gov)



- **Objective A:** Reduce pollution during plastic production.
- **Objective B:** Improve post-use materials management.
- **Objective C:** Prevent trash and micro/nanoplastics from entering waterways and remove escaped trash from the environment

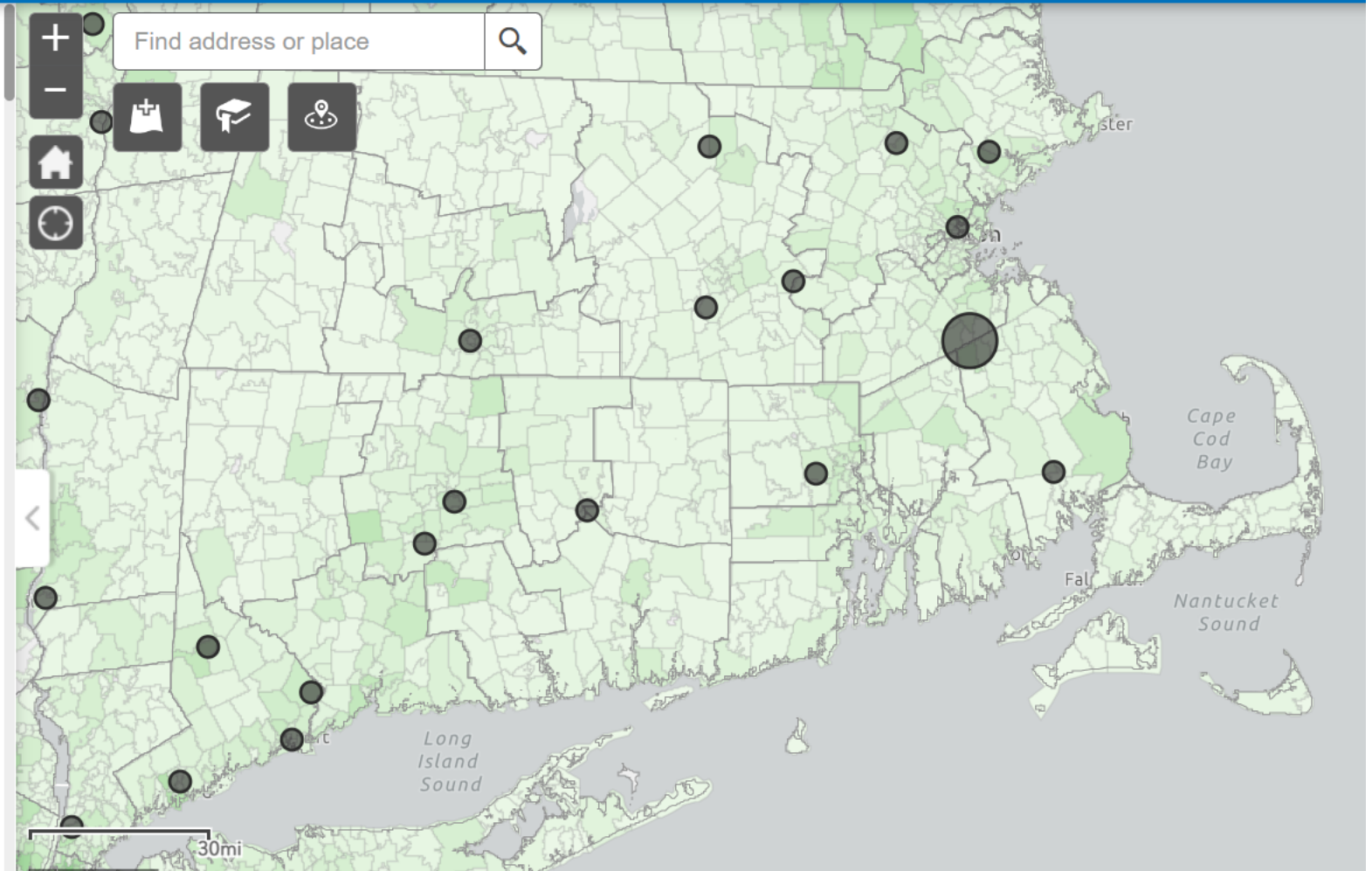
<https://www.epa.gov/circulareconomy/draft-national-strategy-prevent-plastic-pollution>

## Recycling Infrastructure and Market Opportunities Map

### About the Map

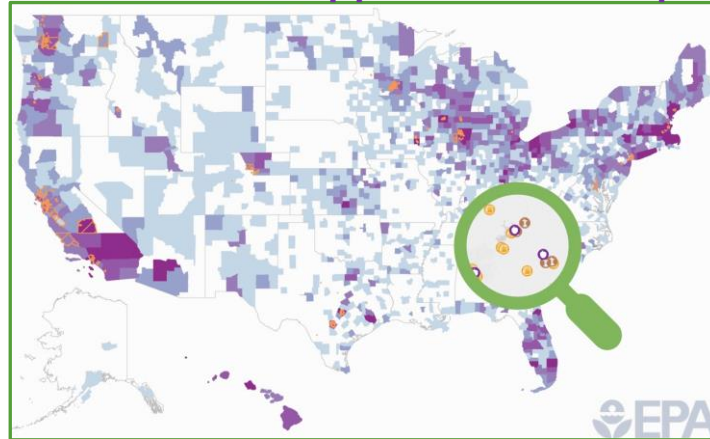
EPA developed the Recycling Infrastructure and Market Opportunities Map to assist in efforts to meet the National Recycling Goal of increasing the U.S. recycling rate of materials generated in municipal solid waste (MSW) to 50% by 2030 and to support the building of new recycling infrastructure through the Bipartisan Infrastructure Law (BIL). The map identifies and displays information on estimated generation, estimated recycling, and estimated recycling potential by ZIP code and material; locations of recycling infrastructure; potential primary and secondary end markets for recycled materials; market factors such as landfill tipping fees and bottle bill deposit prices; and other MSW infrastructure such as landfills and transfer stations.

The map provides estimated U.S. recycling quantities, infrastructure, materials markets, and supporting market factors using the best available data at the time the map was developed (2021-2022). While data sources range from 2011 to 2021, most data are from 2018-2021. Refer to the [technical methodology](#) document for the specific years of data used to create



# EPA Tools & Resources

## Excess Food Opportunities Map



## 2019 Wasted Food Report

Estimates of generation and management of wasted food in the United States in 2019

April 2023



EPA 530-R-23-005



## Anaerobic Digestion Facilities Processing Food Waste in the United States (2019)

## Model Recycling Program Toolkit

Feedback

What are Your Goals for Your Program?

Which Materials Interest You?

Which Materials Management Pathways Interest You?

Who is the Primary Audience?

Which Tools and Resources Do You Need?

Browse All



Find content by selecting one or more responses to each of the questions. Then click "Show Results."

Show results

Clear results

# EPA Funding Opportunities



Solid Waste  
Infrastructure for  
Recycling Grant  
Program



Recycling Education  
and Outreach Grant  
Program



Climate Pollution  
Reduction Grant  
Program

**COMING SOON!!!!**

# Preventing Wasted Food in Your Community: A Social Marketing Toolkit



**SAVE MORE THAN FOOD**  
MAKE A DIFFERENCE

**WASTED FOOD = WASTED MONEY**



**Reducing Food Waste Saves Money**  
Every year, the average family of four wastes \$1,500 on food that is purchased but never eaten.

Learn how you can save money, resources, and the environment at [SaveMoreThanFood.org](http://SaveMoreThanFood.org).

**SWACO**  
SOLID WASTE AUTHORITY OF CLACKAMAS COUNTY



How can you save up to \$1,800 per year?  
**Shop with a list!**



**WASTED FOOD STOPS WITH US.**

HAMILTON COUNTY  
**R3SOURCE**  
REDUCE. REUSE. RECYCLE.



**EVERY AMERICAN WASTES 290 POUNDS OF FOOD A YEAR**

COOK IT, STORE IT, SHARE IT.  
[SAVETHEFOOD.COM](http://SAVETHEFOOD.COM)



**DON'T LET Good Food GO BAD!**



**KEEP IT FRESHER, LONGER**

Your broccoli likes some moisture and cold air, so wrap it in damp paper towel and refrigerate in an open container to keep it at its best.

Get more tips at:  
[DontLetGoodFoodGoBad.org](http://DontLetGoodFoodGoBad.org)



**Food brings us joy.**



Keep your food fresher, longer.

Storage tips and more at [StopFoodWaste.org](http://StopFoodWaste.org)

# Composting Food Scraps in Your Community: A Social Marketing Toolkit



**Comida dentro,  
plástico fuera.**

¡Así sea  
hace el compost!



[Más información](#)

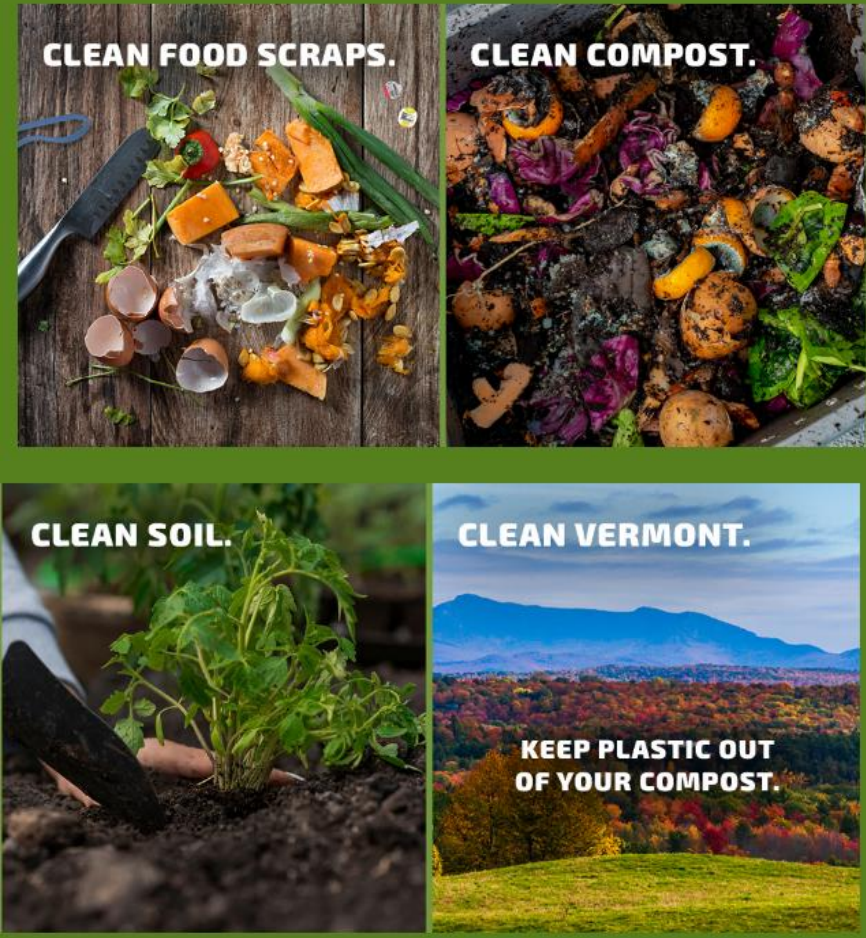


**Food in,  
plastic out.**

That's how you  
**Compost Right.**



[Learn More](#)



**CLEAN FOOD SCRAPS.**

**CLEAN COMPOST.**

**CLEAN SOIL.**

**CLEAN VERMONT.**

**KEEP PLASTIC OUT  
OF YOUR COMPOST.**



## New England Sustainable Material Management Update: April 19, 2023



Bowen, Janet

To

Retention Policy 10 years (Capstone approach) (10 years)

Expires 4/16/2033

 Reply

 Repl

April 19, 2023

### Updates

1. 2023 Healthy Communities Grant Program Announcement, application is May 26, 2023
2. EPA Seeks Input on Inflation Reduction Act Programs to Reduce Greenhouse Gas Emissions Associated with Construction Materials and Products, Comments due 5/1/2023
3. 2023 Circular Economy Request for Information: Challenges and Opportunities of Increasing Materials Circularity, response due by 5/1/2023
4. Biden-Harris Administration Announces Availability of \$16 Million for Pollution Prevention in Environmental Justice Communities
5. USDA Announces Cooperative Agreements for Compost and Food Waste Reduction, Applications due June 15, 2023

### Tools/Case Studies

6. Anaerobic Digestion Facilities Processing Food Waste in the United States (2019), April 2023
7. 2019 Wasted Food Report, April 2023
8. On-farm Composting Toolkit
9. Map & List of Massachusetts Sites Accepting Diverted Food Material, February 2023
10. The Food Scrap Contamination Guide, New York State Pollution Prevention Institute
11. International Compost Awareness Week social media toolkit
12. Mitchell Center Spring 2023 Sustainability Talks, Recording available
13. Composting and Mulching for Climate-Wise Gardening, webinar recording March 2023

---

[bowen.janet@epa.gov](mailto:bowen.janet@epa.gov)

# MORE!

- **To receive EPA's In the Loop newsletter:**  
<https://www.epa.gov/recyclingstrategy/forms/stay-connected>
- **Funding opportunities:** <https://www.epa.gov/sustainable-management-food/funding-opportunities-and-epa-programs-related-food-system>
- **Research:** <https://www.epa.gov/land-research/food-waste-research>
- **Model Recycling Program Toolkit:**  
<https://www.epa.gov/recyclingstrategy/model-recycling-program-toolkit>
- **More info:** <https://www.epa.gov/sustainable-management-food>