



Managing Waste in CT Schools



Update for Recycling Coordinators

- CT DEEP sent out 1839 emails to Principals and Assistant Principals of Public K-12 Public Schools.
 - Reminded them of Designated/Mandated Recyclables.
 - Informed them of PA 24-45 and although their school likely doesn't trigger law, they could still collect food scraps voluntarily.
 - New resources on CT DEEP's [Grade School Recycling Resources](#) webpage.
 - Upcoming webinar – November 4, 2025, 2-3pm (see next slide)
- An additional email will go out after webinar with survey
 - To learn what schools are doing now, in terms of recycling, food sharing, food donation and food scraps composting or other initiatives.
- DEEP staff will be conducting site visits to schools this school year.



Connecticut Department of Energy & Environmental Protection

[CT.gov Home](#) / [Department of Energy & Environmental Protection](#) / [Reduce, Reuse, Recycle](#) / [Grade School Recycling Resources](#)

[Reduce/Reuse/Recycle Main Page](#) >

[Recycling...It's the Law!](#) >

[Recycling Means Jobs](#) >

[Recycling At Home](#) >

[Business Recycling Assistance](#) >

[Recycling at Schools and Institutions](#) >

[Special Event and Venue Recycling](#) >

[Municipal Recycling Resource Center](#) >

[State Agency Recycling Resources](#) >

[Main Menu](#) >

Search Department of Energy & Environmental Protection

by Keyword



School Recycling and Composting Resources Managing Materials Sustainably in Connecticut

Managing waste and materials from your school is much broader than collecting paper, bottles and cans for recycling. To have a strong sustainable program that is fiscally responsible and environmentally sound administrators, facility staff, teachers, students and their parents should be involved in creating programs that are engaging and easy to maintain.

Recycling, It's the Law: Recycling has been mandatory in Connecticut for many items and has been in effect since January 1, 1991, with additional materials added in 2012. Schools are not exempt. Review [CT Mandatory Recycling](#) to learn more about items required to be collecting for recycling in Connecticut.

Food Scraps Law: In 2024, Connecticut passed a law which states if a school building (public, private, religious, charter or boarding school) generates more than 26 tons per year of food scraps (incl. cafeteria, culinary program, school kitchen) and is within 20 miles of an authorized composting facility you must collect food scraps for composting starting July 1, 2026.

School Recycling and Composting Tool Kit

- [Your School is Legally Required to ... Recycle, Compost, and more](#) 📄
- [How to Set Up a Recycling Program at Your School \(incl. information about contracts, bins, forming a green team\)](#) 📄
- [Managing School Cafeteria Waste \(incl. food sharing tables, donating surplus food, collecting food scraps, how to conduct a waste sort and alternatives to single use\)](#) 📄
- Program Kick-off ideas (incl. presentation templates, trivia game, and more) - **coming soon**
- [Non-mandatory Recycling Project Ideas \(incl. fundraising ideas\)](#) 📄
- Classroom Activities & Resources - **coming soon**

FEEDBACK +

[Grade School Recycling Resources](#)



Connecticut Department of Energy & Environmental Protection

[CT.gov Home](#) / [Department of Energy & Environmental Protection](#) / [Reduce, Reuse, Recycle](#) / [Grade School Recycling Resources](#)

[Reduce/Reuse/Recycle Main Page](#) >

[Recycling...It's the Law!](#) >

[Recycling Means Jobs](#) >

[Recycling At Home](#) >

[Business Recycling Assistance](#) >

[Recycling at Schools and Institutions](#) >

[Special Event and Venue Recycling](#) >

[Municipal Recycling Resource Center](#) >

[State Agency Recycling Resources](#) >

[Main Menu](#) >

Search Department of Energy & Environmental Protection

by Keyword



School Recycling and Composting Resources Managing Materials Sustainably in Connecticut

Managing waste and materials from your school is much broader than collecting paper, bottles and cans for recycling. To have a strong sustainable program that is fiscally responsible and environmentally sound administrators, facility staff, teachers, students and their parents should be involved in creating programs that are engaging and easy to maintain.

Recycling, It's the Law: Recycling has been mandatory in Connecticut for many items and has been in effect since January 1, 1991, with additional materials added in 2012. Schools are not exempt. Review [CT Mandatory Recycling](#) to learn more about items required to be collecting for recycling in Connecticut.

Food Scraps Law: In 2024, Connecticut passed a law which states if a school building (public, private, religious, charter or boarding school) generates more than 26 tons per year of food scraps (incl. cafeteria, culinary program, school kitchen) or more than 26 miles of an authorized composting facility you must collect food scraps for composting starting July 1, 2026.

School Recycling and Composting Tool Kit

- [Your School is Legally Required to ... Recycle, Compost, and more](#) 📄
- [How to Set Up a Recycling Program at Your School \(incl. information about contracts, bins, forming a green team\)](#) 📄
- [Managing School Cafeteria Waste \(incl. food sharing tables, donating surplus food, collecting food scraps, how to conduct a waste sort and alternatives to single use\)](#) 📄


Program Kick-off ideas (incl. presentation templates, trivia game, and more) **coming soon**

- [Non-mandatory recycling programs \(incl. fundraising ideas\)](#) 📄
- Classroom Activities & Resources - **coming soon**

FEEDBACK +

Waste and Materials Often Generated in Schools

In Connecticut, recycling is state law! This means everyone must recycle including all public, private, religious, charter and boarding schools. If your school buildings generate these items, they must be collected for recycling or properly disposed.

Item/Material	Mandatory	Where generated?	How best to manage – link to additional information
Aluminum cans	Yes	Kitchen, cafeteria, teachers room, classrooms	If part of the CT bottle bill /redemption program with a 10 cent deposit, return for your dime; can also acceptable in CT's mixed (single stream) recycling program. Learn more about What's IN , What's OUT at RecycleCT.
Batteries - Automotive	Yes	Facility's garage, automotive class	What Do I Do With – Batteries, Automotive
Batteries – Household Batteries	No	Classrooms, teacher's lounge, administrative offices	Managing Household Batteries
Batteries – Rechargeable, Ni-Cd, Lithium Ion, Small sealed lead-acid Batteries	Yes	Facility's office, classrooms, teacher's lounge, administrative offices	Recycling Rechargeable Batteries
Recycling Bins and Dumpsters			How to Set Up a Recycling Program at Your School (incl. information about contracts, bins, forming a green team) 
Books	No	Library, end of school year	What Do I Do With – Books and Textbooks
Bottle Caps	No		Household bottle caps not accepted in CT's

[Grade School Recycling Resources](#)

Public Act 24-45

Sec. 6(a)(5) **On and after July 1, 2026**, each public or nonpublic school building or educational facility in which students in grades kindergarten to twelve, inclusive, or any combination thereof, are enrolled, that is located not more than twenty miles from either an authorized source separated organic material composting facility and that generates an average projected volume of not less than twenty-six tons per year of source-separated organic materials shall:

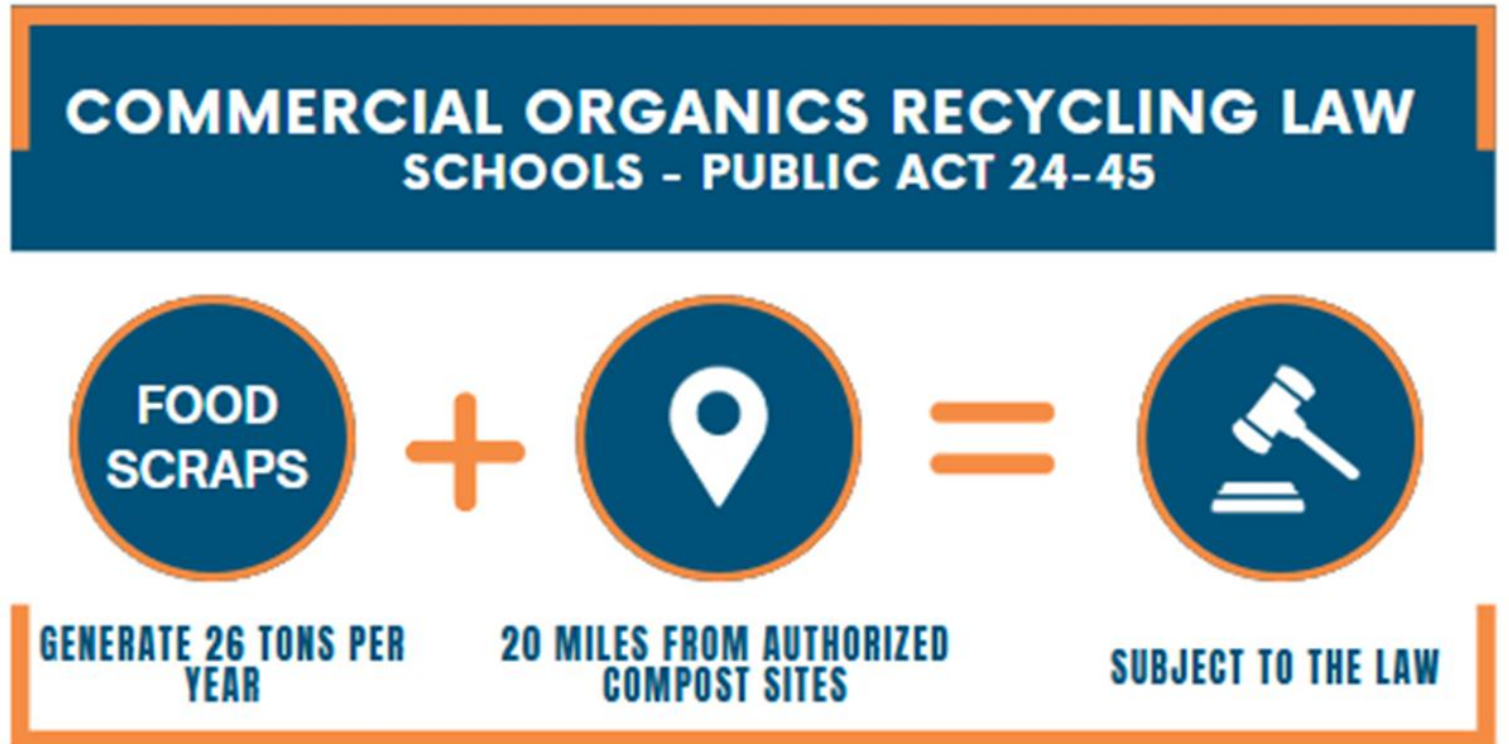
Separate such source separated organic materials from other solid waste;

and ensure that such source-separated organic materials are recycled at any authorized source-separated organic material composting facility that has available capacity and that will accept such source-separated organic material.

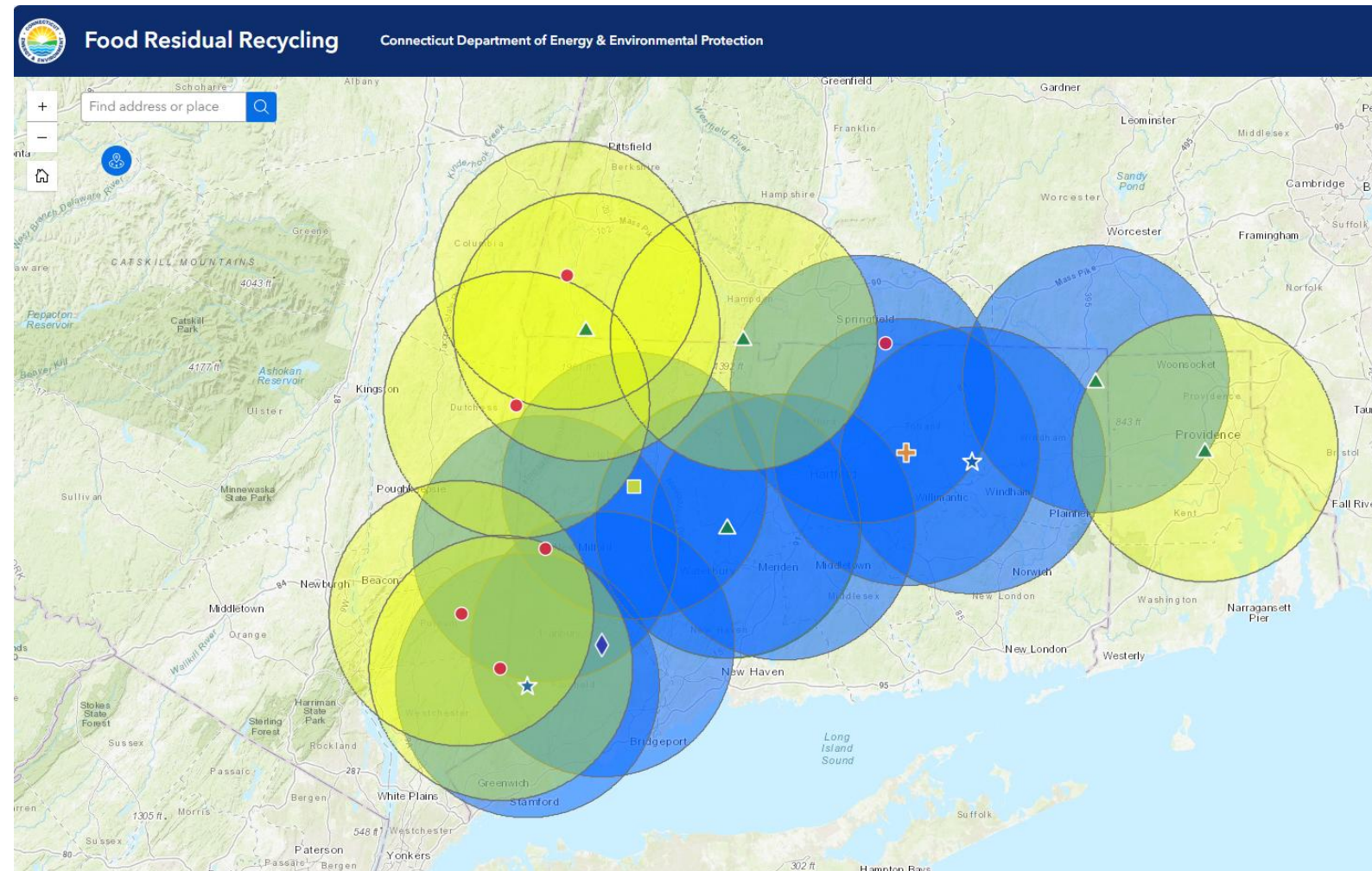
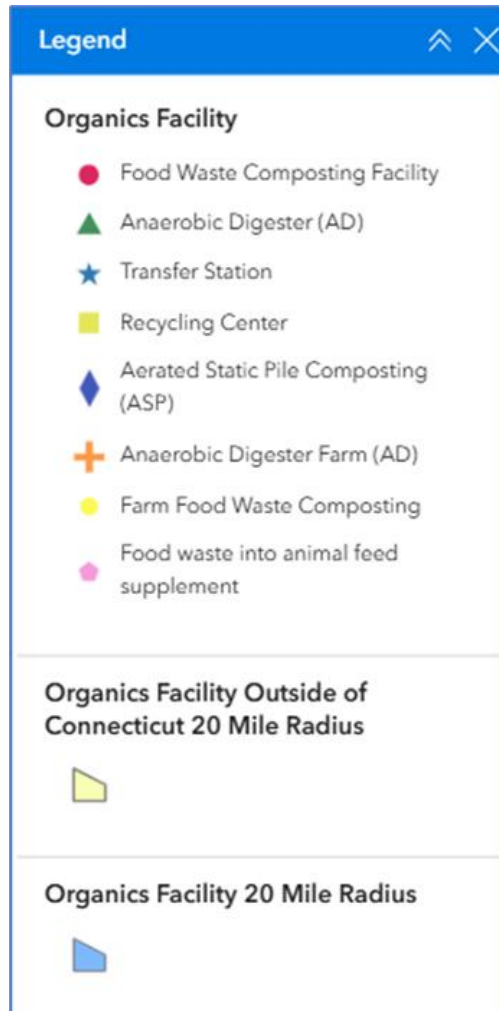


Is My School Triggered by the Law?

DEEP analyzes the available data and provides tools to help schools.



Map: Determine the Distance to a Processing Compost Facility



Processing Compost Facilities

Facilities in Connecticut that Process Food Scraps

- Bright Feeds in Berlin
- Hytone Farm AgGrid in Coventry
- WeCare Denali New England, Ellington
- Litchfield Recycling Center in Litchfield
- Mansfield Transfer Station in Mansfield
- New Milford Farms in New Milford
- Newtown Transfer Station in Newtown (*under construction*)
- Ridgefield Transfer Station in Ridgefield
- Quantum BioPower in Southington
- Fort Hill Farm AgGrid in Thompson

Facilities Across the Border that Process Food Scraps

- McEnroe Organic Farm in Millerton, NY
- Mother Nature's Farms, Inc. in Carmel, NY
- Snow Hill Farm, LLC in North Salem, NY
- Sheffield Foods/Biosphere Farms in Sheffield, MA
- Pine Island Farm in Sheffield, MA
- Rockwood Ag-Grid, LLC in Granville, MA
- Shadow Valley Farm in Somers, MA
- Anaergia Rhode Island in Johnston, RI

20 Schools Trigger Law; Offered CET Assistance

- Avon – Avon Old Farms School
 - Kent - Kent School
 - Bridgeport – Cesar A. Batalla School, Blackham Elementary School, Geraldine Johnson Elementary School, and Read Elementary School
 - Brookfield – Candlewood Lake Elementary School
 - Danbury – Danbury High School
 - New Haven – Amistad Academy
 - Pomfret – Pomfret School
 - Salisbury – The Hotchkiss School and The Salisbury School
 - Simsbury – Westminster School
 - Suffield – Suffield Academy
 - Wallingford – Choate Rosemary Hall
 - Waterbury – Michael F. Wallace Middle School & Crosby High School (attached) and North End Middle School & Wilby High School (attached)
 - Watertown – The Taft School
 - Windsor – The Loomis Chaffee School
- Total number of schools triggered = 20 schools*
Number of K-12 schools in CT = 1093 schools

Upcoming School Webinar

School Recycling: Virtual Technical Assistance

November 4, 2025, 2:00pm – 3:00pm

[ZOOM link](#)

Join Sherill Baldwin from DEEP and Heather Billings from CET.

- Sherill will provide an overview of CT recycling laws, the new school organics recycling law and available resources.
- Heather will provide a virtual site visit, share what she looks for when conducting a site visit and suggestions for where schools can begin or improve and build upon existing programs.
- There will be time for questions and answers. This event will be recorded and shared with all who register.

[Reduce/Reuse/Recycle Main Page](#) >

[Recycling...It's the Law!](#) >

[Recycling Means Jobs](#) >

[Recycling At Home](#) >

[Business Recycling Assistance](#) >

[Recycling at Schools and Institutions](#) >

[Special Event and Venue Recycling](#) >

[Municipal Recycling Resource Center](#) >

[State Agency Recycling Resources](#) >

[Main Menu](#) >

Search Department of Energy &
Environmental Protection

by Keyword



School Recycling and Composting Resources Managing Materials Sustainably in Connecticut

Managing waste and materials from your school is much broader than collecting paper, bottles and cans for recycling. To have a strong sustainable program that is fiscally responsible and environmentally sound administrators, facility staff, teachers, students and their parents should be involved in creating programs that are engaging and easy to maintain.

Recycling, It's the Law: Recycling has been mandatory in Connecticut for many items and has been in effect since January 1, 1991, with additional materials added in 2012. Schools are not exempt. Review [CT Mandatory Recycling](#) to learn more about items required to be collecting for recycling in Connecticut.

Food Scraps Law: In 2024, Connecticut passed a law which states if a school building (public, private, religious, charter or boarding school) generates more than 26 tons per year of food scraps (incl. cafeteria, culinary program, school kitchen) and is within 20 miles of an authorized composting facility you must collect food scraps for composting starting July 1, 2026.

NEW!

Learn more about Public Act 24-45 and if your school triggers the law.

Complying with School Recycling and Composting Laws in Connecticut Webinar

Held on March 17, 2025

Please find [slide deck here](#)

Please find [recording here](#)

Sharing Tables, Donating Surplus and Collecting Food Scraps

Held on May 5, 2025

Please find [slide deck here](#)

Please find [recording here](#)

School Recycling and Composting Tool Kit

- [Your School is Legally Required to ... Recycle, Compost, and more](#)

Can you help?

- Do you have any schools that are attached or more than one school that sits on the same property/campus?
 - They might trigger the law.



Sherill Baldwin, Environmental Analyst III
Sherill.Baldwin@ct.gov
959-895-2711
Sustainable Materials Management
CT DEEP, 79 Elm Street, Hartford, CT 06106