



Connecticut SWAC June 25, 2024

Mark Koeck
mkoeck@bigbelly.com

Agenda

- Who
- What
- Why



Smart Compost

by **Bigbelly**

The proven, cost-effective,
scalable solution for
multi-family residential
food waste collection



“What is Smart Compost?” - 3 Major Components:



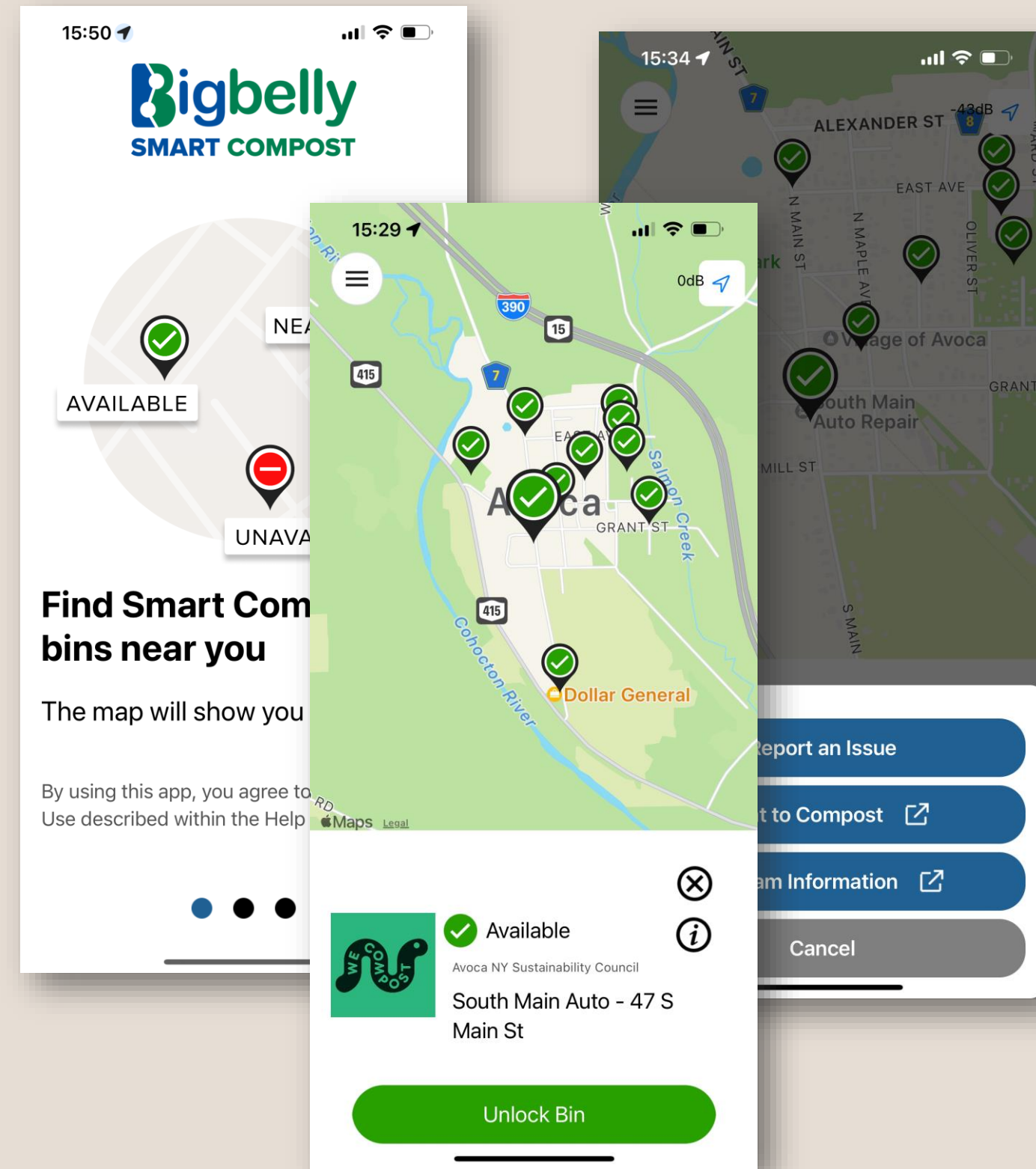
**Smart Compost Bins: Convenient,
secure drop boxes placed
throughout a community**



“What is Smart Compost?” - 3 Major Components:



Smart Compost Bins: Convenient, secure drop boxes placed throughout a community



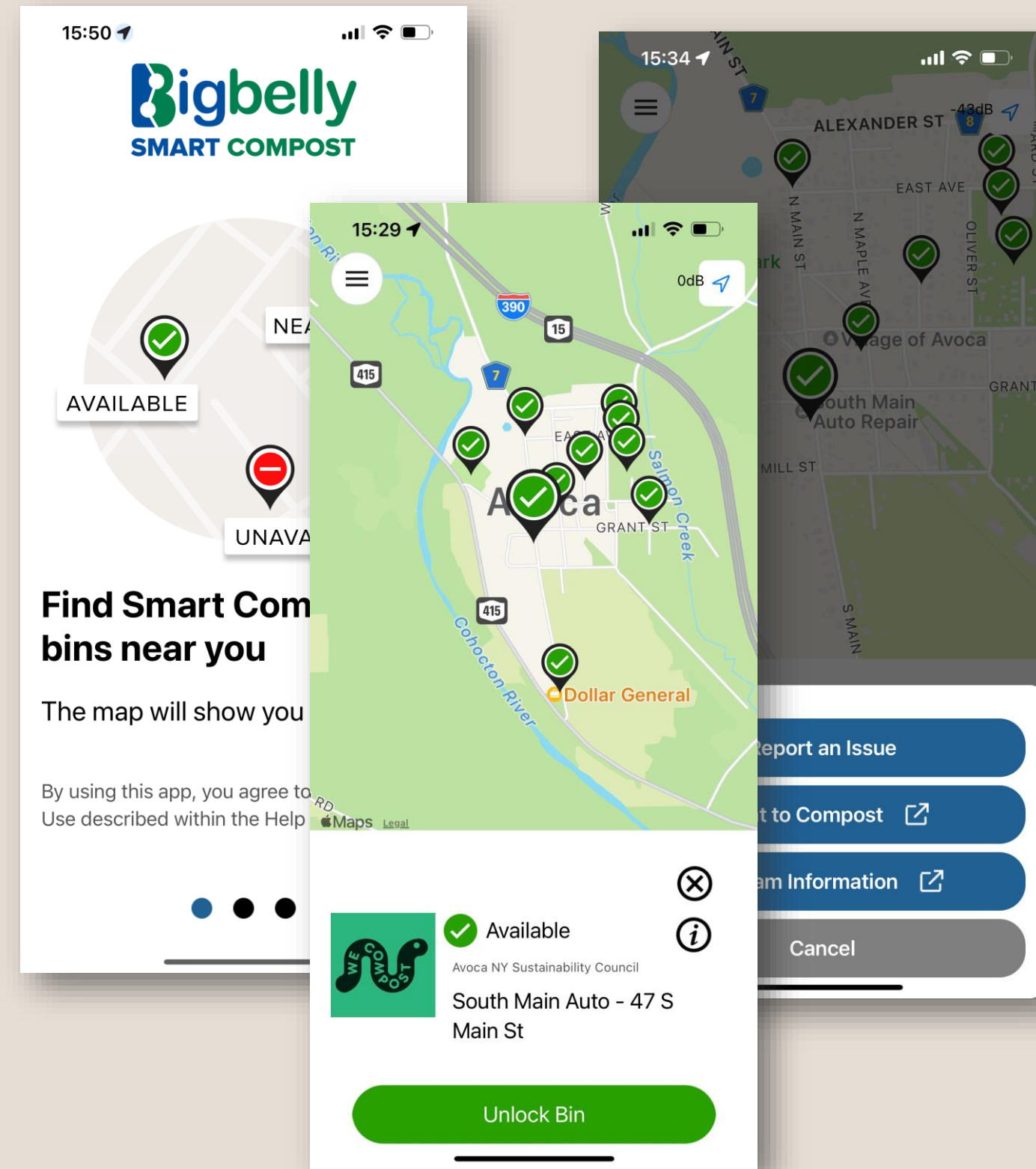
Smart Compost App: Easy, Intuitive resident mobile app to locate and unlock bins



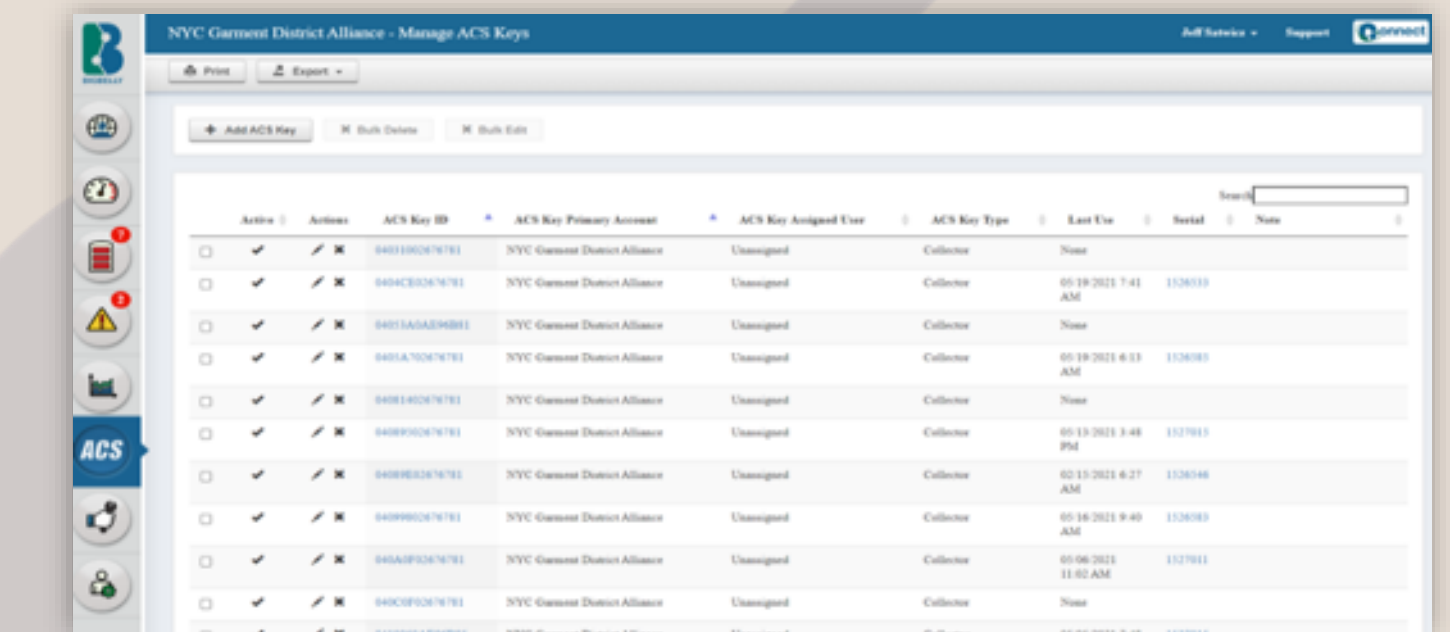
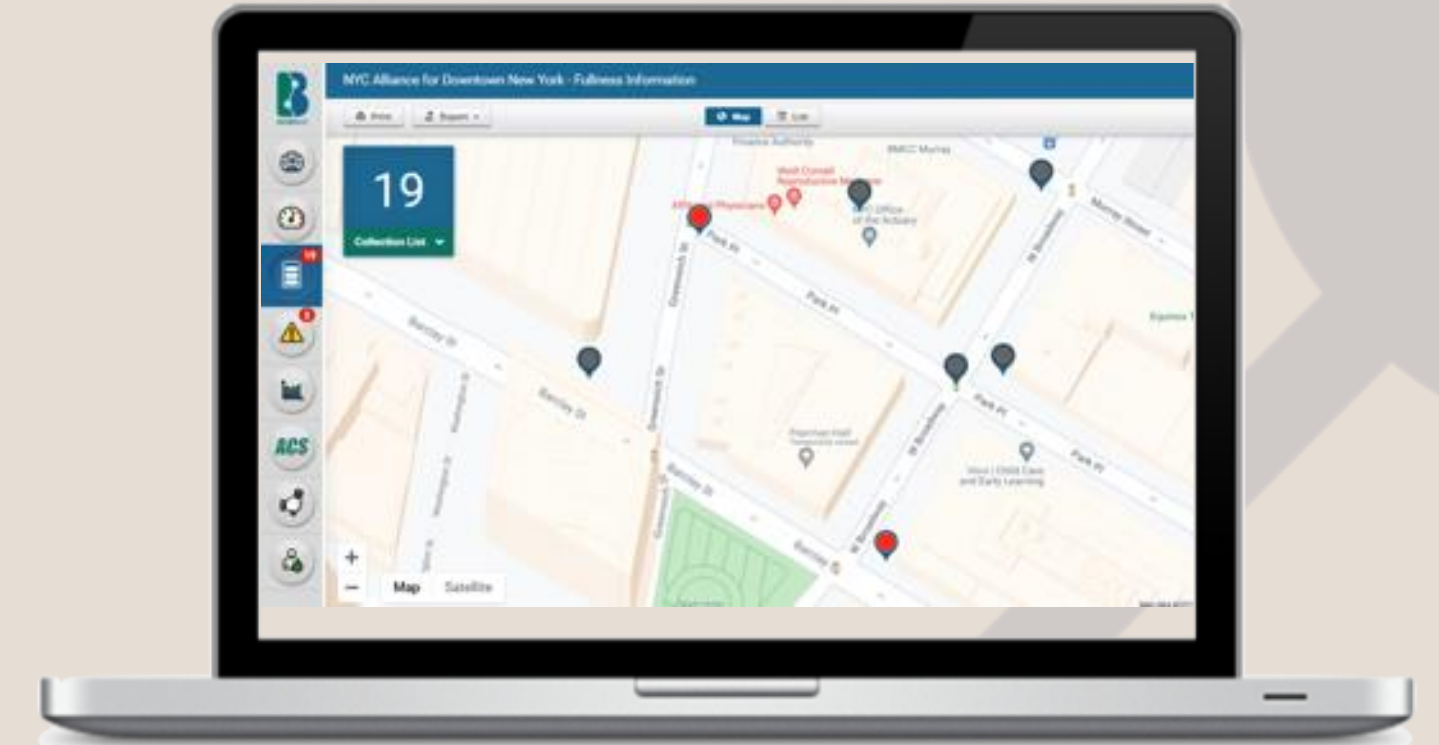
“What is Smart Compost?” - 3 Major Components:



Smart Compost Bins: Convenient, secure drop boxes placed throughout a community



Smart Compost App: Easy, intuitive resident mobile app to locate and unlock bins



CLEAN: Cloud based management system for program operation, to monitor bins and resident use

3 Major Benefits of Smart Compost

Only 1 bin
for every
100
households

24/7 access
for
residents

50% lower
operating
cost than
curbside

Residents love it!

“I was ridiculously excited to see one of these bins in my neighborhood **available 24/7**, accepting of all types of food scraps—the perfect combination for **easy composting**.”

“It’s awesome to see something like this in the neighborhood! No more full trash bins with trash all over the place. A simple **easy and efficient** way of depositing my waste“

“I love having **all time access to the compost bins** when my box was full, I liked that the app pointed me to a nearby option”

Key needs of a Compost program

✓ High Participation

Low contamination

No access for rats

Cost effective

- 24/7 access to convenient bin locations
- No cumbersome sign-up process



Key needs of a Compost program

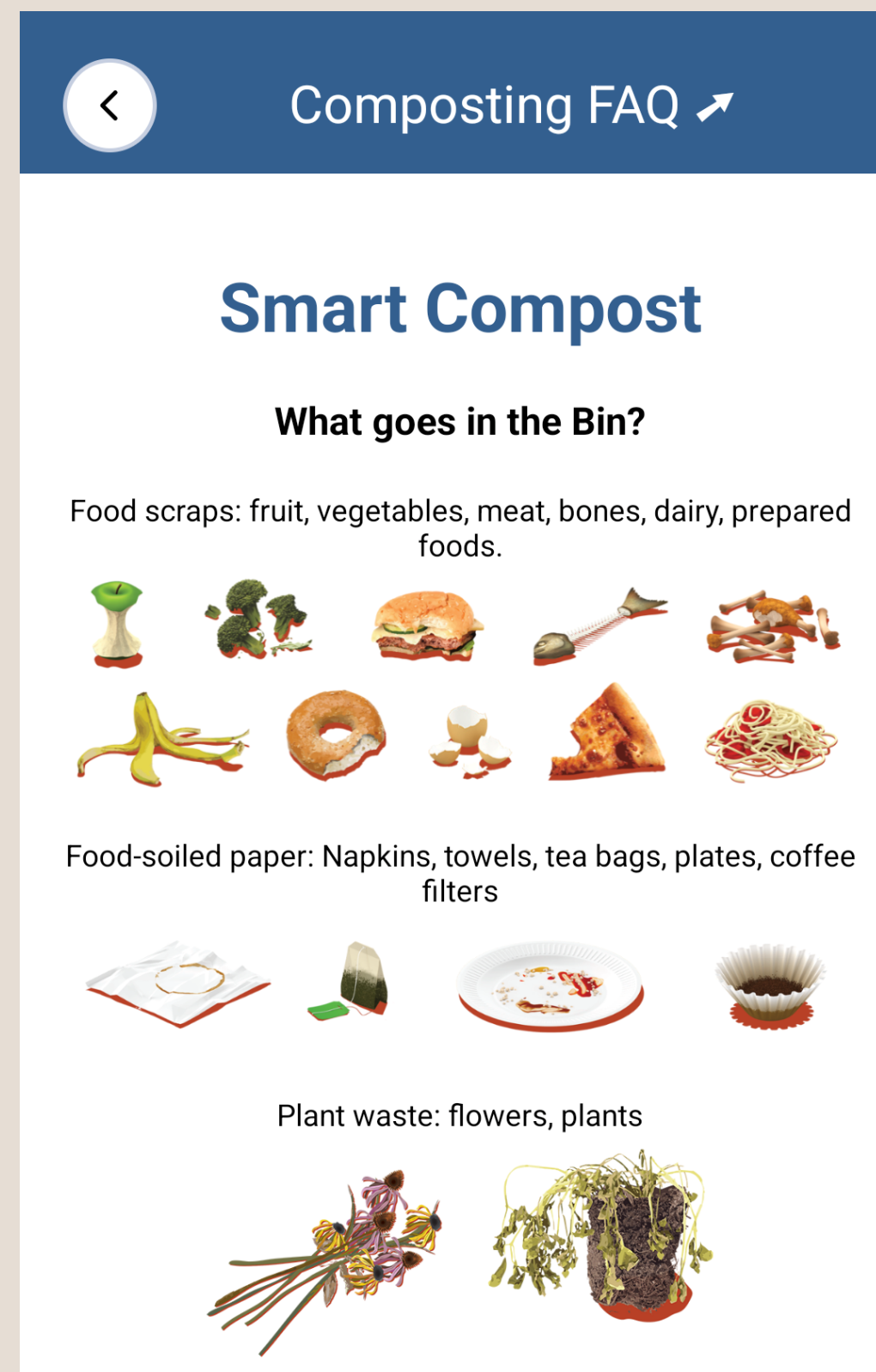
✓ High Participation

✓ Low contamination

No access for rats

Cost effective

- Smart access control
- Know what you can throw - before you go!



Key needs of a Compost program

- ✓ High Participation
- ✓ Low contamination
- ✓ No access for rats

- Totally enclosed, no access to rats
- Doesn't rely on residents having compliant bin – and properly latching it each and every time

Cost effective



Key needs of a Compost program

- ✓ High Participation
- ✓ Low contamination
- ✓ No access for rats
- ✓ Cost effective

- Half the cost of curbside
- Know when and where to collect

