

Recovery of Non-Designated Recycling Items (Solid Waste Permit Condition)

January 28, 2020

Prepared by: Kevin Barrett & Frank Gagliardo
Waste Engineering and Enforcement Division
Solid Waste Advisory Committee



Connecticut Department of Energy and Environmental Protection

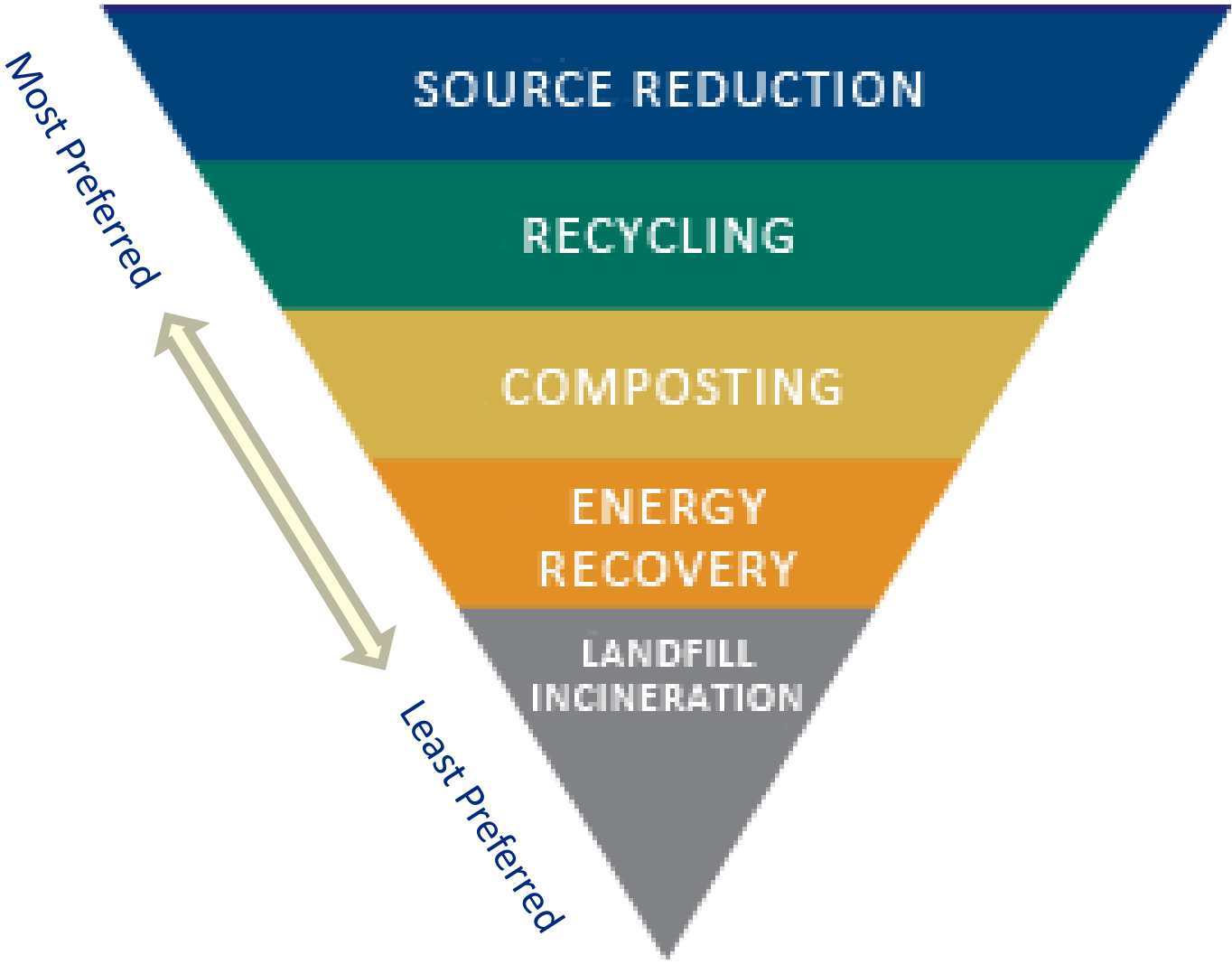
Comprehensive Materials Management Strategy (CMMS)

CMMS:

- In July 2016, CMMS update to the state-wide Solid Waste Management Plan.
- Roadmap to achieving the state's goal of 60 percent diversion of materials from disposal by 2024.
- Affirms the order of priority for managing solid waste, which is referred to as the "solid waste hierarchy".
- Requires a shared responsibility and commitment of all solid waste management participants.
- Includes responsibility for processing facilities to... "strive to increase both quantity and quality of materials recovered for markets".



Solid Waste Hierarchy per CGS 22a-228(b)



Recovery of Non-Designated Recyclable Items

Permit Condition: ...the Permittee shall achieve a defined rate of recovery of Recyclable Items not designated pursuant to Section 22a-241 of CGS (“Non-Designated Recyclable Items”).

The rate of recovery is based on the length of time such facility has been permitted and increases up to 40% with each passing year (typically 10 – 40%).

Example of a 1st generation permit:

<u>Year of the Permit</u>	<u>Recovery Rate (% of waste received)</u>
First year	10%
Second year	20%
Third year	30%
Fourth year	35%
Fifth year	40%

NOTE: If recovery rate is not achieved, then additional reporting will need to be provided to the DEEP.

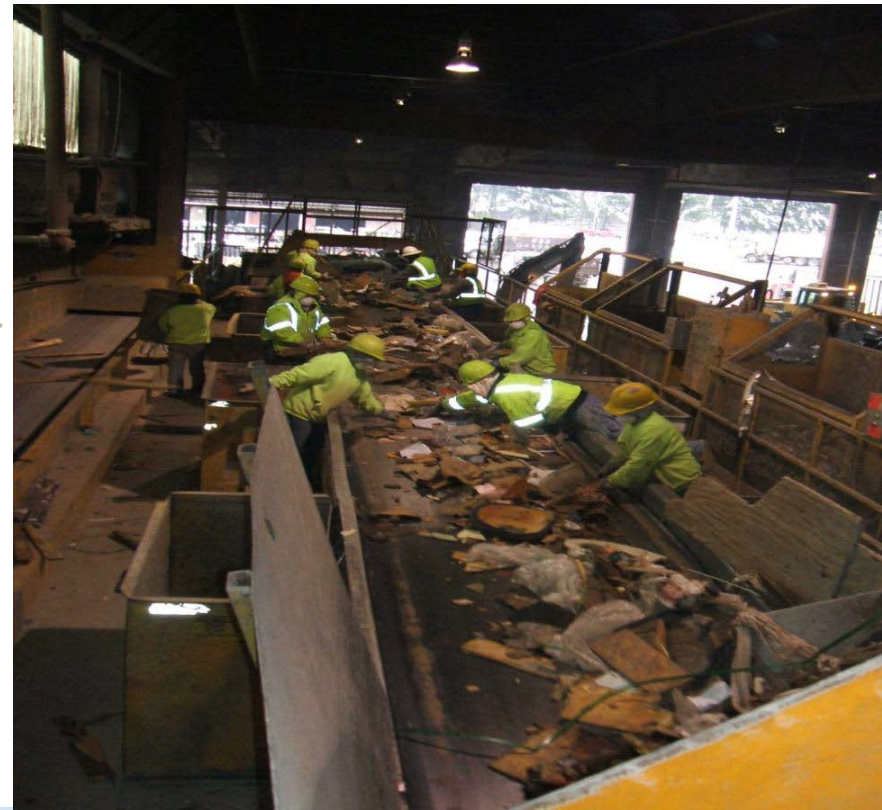


Separation for Recycling Markets



Connecticut Department of Energy and Environmental Protection

Recovery of Non-Designated Recyclable Items from C&D



Connecticut Department of Energy and Environmental Protection

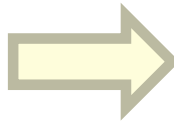
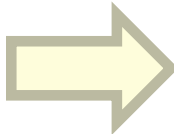
Types of Non-Designated Recyclable Items

Non-Designated Recyclable Items, may include but are not be limited to:

- Rigid Plastics/Plastics #3-#7
- Plastic Film
- Asphalt shingles
- Mattresses
- Textiles-carpet/clothing/curtains
- Glass {not container glass}
- Wood
- Gypsum
- Other items (non-DRIs) for which there exists a market



Marketable Commodities



Permit Reporting Requirements

Quarterly Solid Waste Reports and Annual Report (w/in 60 days of permit anniversary date) shall:

- Identify the percent recovery rate by weight for previous period; and
- If recovery rate is not achieved, then document the circumstances which resulted in the inability to achieve the specific recovery rate.

NOTE: If recovery rate is not achieved, then the Annual Report shall clearly identify the specific measures to be taken to achieve the recovery rate and the actions to be implemented at the facility.



What's Next

WEED will finalize the evaluation to identify the “Current State”:

- Identify reported recovery rates Non-Designated Recyclable Items for permitted solid waste facilities.
- Identify Compliance with reporting conditions and the information provided.
 - Do quarterly and annual reports contain required information?
 - Do Compliance Audit Reports performed quarterly adequately address compliance with this condition?



Questions?

Contact Information:

Kevin Barrett

Kevin.barrett@ct.gov

860-424-3697

Frank Gagliardo

Frank.P.Gagliardo@ct.gov

860-424-3130

Search Words @ www.ct.gov/deep/site :

- Solid Waste Hierarchy
- Recycling Laws (annotated list)
- Mattress Recycling
- Reduce Reuse (recycling main page)
- CMMS
- SWAC (solid waste advisory committee – agendas)



Collaboration and
Innovation are Keys to
Success!



Connecticut Department of Energy and Environmental Protection