

LEGEND

- PROPERTY BOUNDARY
- APPROXIMATE LIMITS OF DRAINAGE AREAS
- DIRECTION OF OVERLAND STORMWATER FLOW
- PERVIOUS AREAS
- SPILL KIT
- SIGNIFICANT SPILL LOCATION

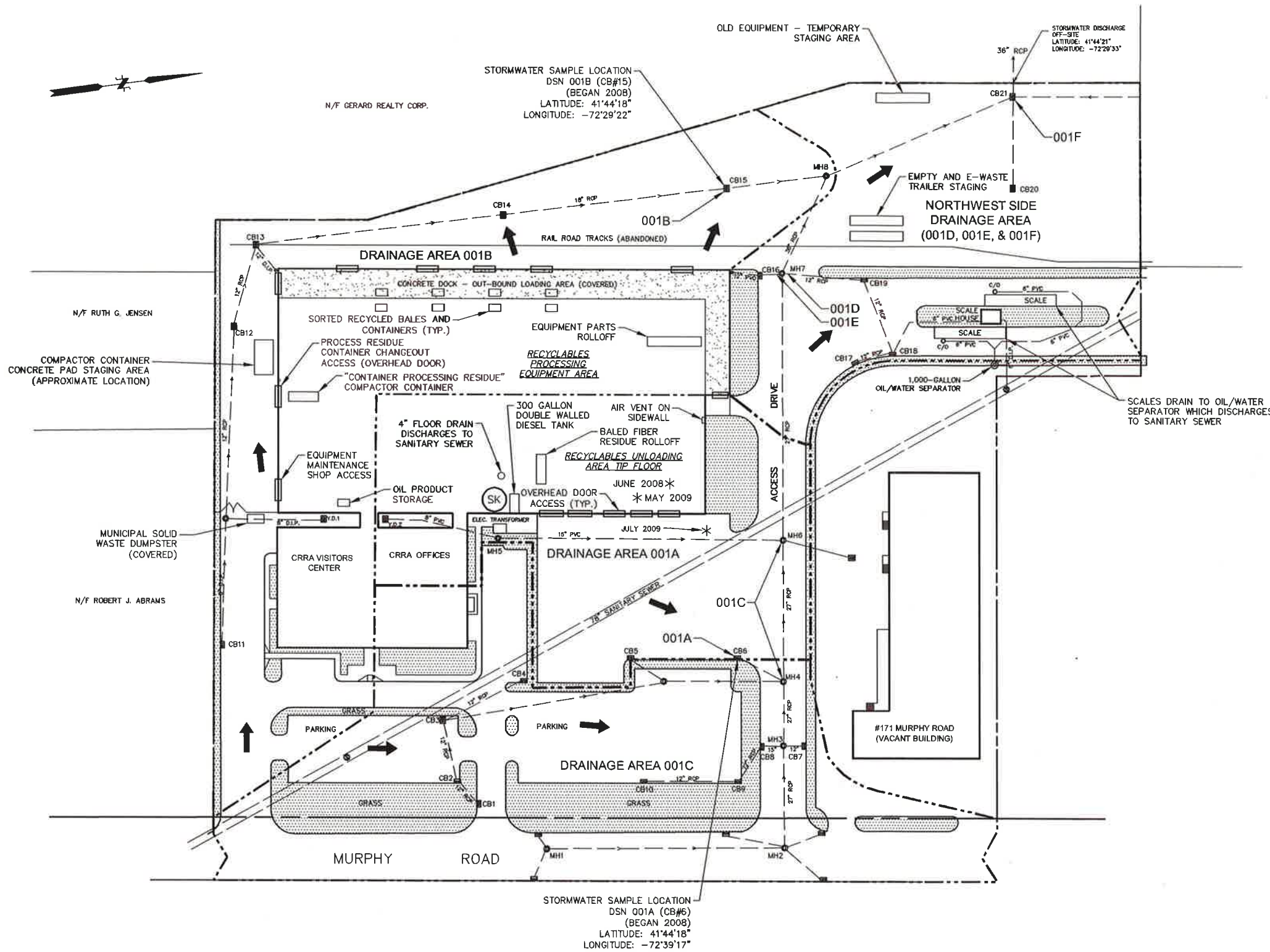
MAP REFERENCE:

"SITE DRAINAGE PLAN FOR STORMWATER POLLUTION PREVENTION PLAN, CONNECTICUT RESOURCES RECOVERY AUTHORITY, RRT EMPIRE / MIXED RECYCLABLES FACILITY, 211 MURPHY ROAD, HARTFORD, CONNECTICUT" ATTACHMENT F, SCALE: 1" = 40' DATED: MARCH 1993 BY: FUSS & O'NEILL, INC.

NOTES:

- 1) LOT SIZE: 9.15± ACRES INCLUDING THE #171 MURPHY ROAD ADDRESS.
- 2) CONTROLS TO REDUCE POLLUTANTS:
SITE SWEEPING
CATCH BASIN CLEANING
- 3) THE SURFACE WATER FROM THIS SITE DISCHARGES TO THE SOUTH MEADOWS POND, PART OF THE USACOE FLOOD CONTROL SYSTEM. WATER FROM THE POND DISCHARGES TO THE CONNECTICUT RIVER BY DIRECT FLOW WHEN RIVER LEVELS ARE LOW OR BY PUMPING WHEN RIVER LEVELS ARE HIGH. THE CONNECTICUT RIVER IS AN IMPAIRED WATERBODY (CT4000-00_03).
- 4) SIGNIFICANT SPILLS OR LEAKS SINCE 2008 AS SHOWN ON THIS PLAN BY DATE AND LOCATION HAVE BEEN PROPERLY MANAGED (REFER TO SWPPP-ATTACHMENT D)
- 5) THERE ARE NO NON-STORMWATER DISCHARGES FROM THIS SITE.

DRAINAGE AREAS			
DRAINAGE AREA NUMBER	IMPERVIOUS AREA (AC.)	PERVIOUS AREA (AC.)	TOTAL AREA (AC.)
001A	1.50±	0.14±	1.64±
001B	2.79±	0.11±	2.90±
001C	1.85±	0.47±	2.32±
NORTHWEST SIDE (001D+001E+001F)	1.54±	0.20±	1.74±
TOTAL	7.68±	0.92±	8.60±¹



File Path: J:\DWG\211\211MURPHY.dwg, Layout: FIGURE 2-1X17, Plotted: Fri, Dec 09, 2011 - 2:17 PM, User: b...
 Plotter: ACPLOT.PC3, CTB File: FO 2008 MONO (HALF).CTB
 LAYER STATE:

No.	DATE	DESCRIPTION	DESIGNER	REVIEWER
2	12/9/2011	REVISIONS TO DRAINAGE AREA REFERENCES	BMB	DSD
1	5/1/2011	SWPPP REVISIONS	BMB	DSD

SCALE:
 HORZ: 1" = 40'
 VERT: _____
 DATUM: _____
 HORZ: _____
 VERT: _____
 0 20 40
 GRAPHIC SCALE

f **FUSS & O'NEILL**
 146 HARTFORD ROAD
 MANCHESTER, CONNECTICUT 06040
 860.646.2469
 www.fandco.com

CONNECTICUT RESOURCES RECOVERY AUTHORITY
 MID-CONNECTICUT REGIONAL RECYCLING CENTER
 DRAINAGE AREA SITE MAP
 STORMWATER POLLUTION PREVENTION PLAN
 211 MURPHY ROAD
 HARTFORD CONNECTICUT

PROJ. No.: 20100123.S21
 DATE: DECEMBER 2011
FIGURE 2