

# Kevin Clements

Sanitary Engineer 2

Waste Engineering & Enforcement Division

[kevin.clements@ct.gov](mailto:kevin.clements@ct.gov)

(860) 424-3545



# WEED Multimedia Auto Junkyard Initiative

# Outreach & Enforcement Initiative, Background

---

Through formal enforcement action in 2003, funds that were generated through an SEP were used to create an outreach program.

## Phase One

1. To gather baseline data in 2004, DEP sent out a questionnaire to all Auto Salvage Yards in the state (approx. 125). 50 surveys were returned.
2. DEP hosted 4 training sessions (held January 2004-September 2004).
  - Guidance Manual was distributed-*Auto Recycling Industry Compliance Guide*
3. Follow up questionnaire sent out to training session attendees. 20 surveys were returned.
4. A consultant was hired to analyze data received.

# Outreach & Enforcement Initiative, Background

---

## Phase Two

1. Compliance Assessment- All DMV-licensed facilities had free training and received manuals.
2. Follow-up inspections were conducted & enforcement was taken where necessary.

# Outreach & Enforcement Initiative, Statistics

<b>Year</b>	<b>Actions Taken</b>
2005	5 inspections, 1 formal enforcement action, 2 informal actions
2006	12 inspections, 1 formal enforcement action
2007	4 inspections, 1 hazardous waste NOV, 1 solid waste NOV
2008	5 inspections, 2 NOVs
2009	8 inspections, 1 NOV
2010	9 inspections, 4 informal enforcement actions

# Common RCRA Violations

---

- Lacking total halogen determination
  - Lacking hazardous waste determination
  - Failure to label universal waste (batteries)
  - Incorrect storage of used batteries
- \* If Auto Salvage Yards fall into generator category, violators will usually receive formal action.



# Violations





# Violations





# Violations

---





# Violations





# After: Compliance

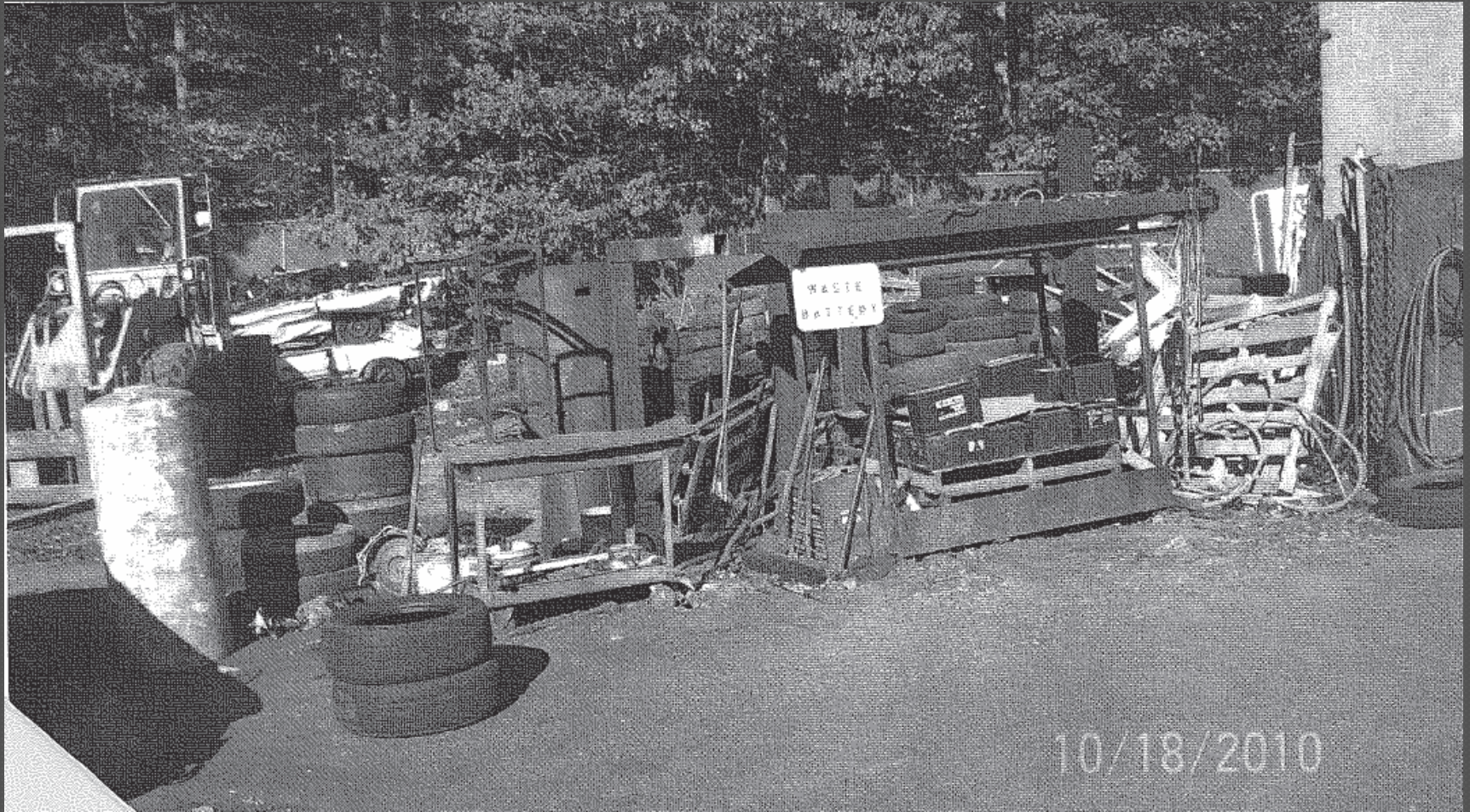
---





# After: Compliance

---





# Additional Resources

---

- DEP RCRA Help Website
  - [www.ct.gov/DEP/RCRAhelp](http://www.ct.gov/DEP/RCRAhelp)
- Hazardous Waste Advisory Committee
  - <http://www.ct.gov/dep/hwac>
  - Sign up to become a member of the Listserv
- Hazardous Waste Webpage
  - <http://www.ct.gov/dep/hazardouswaste>
- Small Business Training Materials
  - [http://www.ct.gov/dep/cwp/view.asp?a=2718&q=451984&depNAV\\_GID=1967](http://www.ct.gov/dep/cwp/view.asp?a=2718&q=451984&depNAV_GID=1967)
- CESQG Handbook
  - [www.ct.gov/DEP/hazardouswaste](http://www.ct.gov/DEP/hazardouswaste)
- Auto Recycling Industry Compliance Guide (January 2004)
- Pit stops Fact Sheet (July 2005)
- CAR Association
  - <http://ctautorecyclers.com>
- COMPASS (Compliance Assistance)
  - Hotline: 1-888-424-4193
  - Consultative Audits (Free)
  - HWAC Training

Karen Allen  
Sanitary Engineer 3  
Water Permitting & Enforcement Division

[karen.allen@ct.gov](mailto:karen.allen@ct.gov)

(860) 424-3842

# Stormwater Violations

---





# Stormwater Violations

---





# Stormwater Violations

---





# Stormwater Violations

---



# Stormwater Violations

---





# Stormwater Violations

---





# Stormwater Violations

---





# Stormwater Violations

---





# Stormwater Violations

---





# Almost there...





# EnviroRack



# Questions?

---

