

# *Folia*

The Mansion At  
Harkness Memorial State Park



A Lifetime of Memories



# Folia

noun

- 1) Island home of Aeolus, Greek God of the winds;
- 2) The elegant mansion at Harkness State Park



## Welcome

Harkness Memorial State Park is set on 230 seaside acres of sweeping lawns with panoramic views of Long Island Sound. Eolia, the Italian villa style mansion was the elegant summer home of the Harkness Family. Formal gardens overflow with color and gentle shore breezes transport your guests back to an era of beauty and opulence.

During cocktail hour, guests languidly stroll through restored historical gardens seduced by the scent of flowers and a riot of colors. Admiring fountains and oriental sculptures...perhaps discovering hidden gardens...guests slowly wind their way back to the mansion. They dine by candlelight and enjoy intimate conversation as gentle breezes drift



through the rooms. As the sun sinks below the horizon in a dramatic burst of pinks and oranges, guests gather under the tent to continue the magical evening with dancing and celebration.

Dedicated to weddings and special events, Eolia hosts only one event each day. Your event will be a truly unique, special occasion, which will provide beautiful memories to last a lifetime.

# General Information



- ☞ Only one event per day.
- ☞ Mansion available Memorial Day through Labor Day for evening functions beginning after 5:00pm. During the off-season, the Mansion is available during the day or evening.
- ☞ Accommodates 150 guests.
- ☞ 230 acres of sweeping lawns, stately trees and spectacular gardens.
- ☞ On-site wedding ceremonies included.
- ☞ Wedding Suite.
- ☞ Fully accessible to people with disabilities.
- ☞ Park staff present throughout the entire event.
- ☞ Tent, tables and chairs provided.
- ☞ Nearby hotel accommodations.
- ☞ Centrally located between New York and Boston on the magnificent Connecticut shoreline.



# Natural Setting

In 1907, Mary and Edward Harkness had the opportunity to select the most beautiful property along the northeast coast for their summer home. They chose this location for its unequalled beauty. Now, we can offer you the same choice for your wedding day. For ceremonies, we offer a choice of two distinctly different locations that provide breathtaking views of the natural seaside landscape of Long Island Sound.

Our open-air seaside amphitheater is the more natural setting overlooking sand dunes, beach and rolling waves. Located next to a wildlife sanctuary, the sights and sounds of the seashore environment overwhelm the senses. The outdoor experience is unparalleled and your guests will revel in the beauty of nature.

For an additional fee, you may exchange your vows among draping wisteria vines and original Harkness graperies, in the Pergola with covered tearoom. This area, adjacent to the mansion, overlooks a nationally recognized and award winning Italian garden with original sculpture, fountains and pottery. Past the garden, sweeping lawns flow into incomparable views of ocean seascape.





## Tent and Terrace

The most popular place for cocktails and dancing, this area is often the center for parties. Café tables and chairs are scattered about the terrace and guests dance the night away as the moon reflects off the waters of Long Island Sound. Musicians and DJ's set-up outside and their music is carried through the tent and drifts into the mansion.

## Breakfast Room

A favorite room for all our couples, the Breakfast Room has a beautiful painted ceiling depicting four seasons of floral arrangements. Intricate latticework surrounds three sides of expansive windows overlooking the tent and gardens. It is a spectacular location for the cake and offers a quiet backdrop for coffee and desserts.





## Wedding Suite

Secreted away on the second floor, this airy room provides a tranquil place for the wedding party to get ready for the special day. Following pictures, sneak back up to freshen up and catch your breath. Dramatic memories are captured as the wedding party descends the staircase for introductions.



## Music Room

The Music Room is the main dining room. It boasts a marble fireplace and ceilings that rise 16 feet above a gleaming hardwood floor. The walls are cream colored and the wood trim a neutral hue inspired by the inside of an oyster shell. Guests dine under dimly lit ornate silver sconces. French doors open out onto the Loggia and to the West Garden.

## Making Your Event *Historical*

Edward Steven Harkness and his wife Mary Stillman Harkness were the beneficiaries of a fortune amassed by Mr. Harkness's father, who was a silent partner of John D. Rockefeller in the Standard Oil Company.

During their lifetimes, Mr. and Mrs. Harkness donated an estimated \$200 million to various charitable, educational and health-related organizations. In Connecticut, their generosity resulted in buildings at Connecticut College, Yale University and Trinity College. In 1951, the estate was bequeathed to the people of the State of Connecticut.

Today, the estate is managed as a State Park by the Department of Energy & Environmental Protection. The 42-room Italianate mansion, designed by the New York architectural firm of Lord and Hewlett, was built in 1906 by William

and Jesse Stillman Taylor (sister of Mary Stillman Harkness).

The estate was purchased by Mr. and Mrs. Harkness in 1907. Architect James Gamble Rogers and his firm designed interior renovations, the Pergola and the Carriage House. The Greenhouses were designed by Lord and Burnham. Eolia was one of six Harkness residences.

James Gamble Rogers' firm designed the layout and pathways of the west garden. Between 1918 and 1929, Beatrix Farrand created a new planting plan for the west garden and designed and installed the East Garden, the Boxwood Parterre and the Alpine Rock Garden. The garden design combines Mrs. Farrand's innovative use of plant materials and textures with Mrs. Harkness' color preferences and extensive collection of Oriental garden statuary.

In 1999, Harkness Memorial State Park received the prestigious Millennium Medallion Award from the American Society of Landscape Architects.



## The *Sea Welcomes*

Harkness Memorial State Park is located where the land meets the sea in historic Mystic Country, Connecticut.

For more than 350 years Mystic Country has been making waves, on and off the waters. Harkness country exudes New England charm. The air is spiced with salt and daring tales of sea life on top of the water with the tall ships at Mystic Seaport— and below at the USS Nautilus & Submarine Force Museum. You and your guests can cozy up to a romantic Bed & Breakfast or up to the tables at two of the world's most exciting gaming resorts – Mohegan Sun and Foxwoods or enjoy one-of-a-kind shops and romantic eateries or world-class entertainment. All are within 30 minutes of Harkness and your dream event.







Five caterers have been selected to service the varied needs of guests to Eolia, the Mansion at Harkness Memorial State Park. These caterers can provide a broad range of food preparation from the simple buffet to the more elaborate formal candlelight dinner. All caterers selected have the capability of tailoring your reception to your specific needs.

The park is able to provide tables and chairs for events held in the mansion. Linens, glassware, flatware, etc. may be procured through the caterer. Caterers will be granted access to the mansion for set-up, two hours prior to your reception but no earlier than 3:00pm.

Please contact the caterers directly for further information and/or to book them for your event.

**A Thyme to Cook**

426 Northwest Corner Road  
 North Stonington, CT 06359  
 Linda Sample/Juli Mancini  
 (860) 887-5932  
[www.athymetocook.com](http://www.athymetocook.com)

**Ivy's Simply Homemade**

316 Boston Post Road  
 Waterford, CT 06385  
 Karen Bartelli  
 (860) 333-1372  
[www.ivys-catering.com](http://www.ivys-catering.com)

**Gourmet Galley Catering**

138 Norwich Westerly Rd.  
 North Stonington, CT 06359  
 Anna Lathrop  
 (860) 415-9589  
[www.gourmet-galley.com](http://www.gourmet-galley.com)

**Culinary Concerts**

51 Boston Post Road  
 Madison, CT 06443  
 Christopher Bracken  
 O: (203) 245-0184  
 C: (203) 640-2597  
[www.culinary-concerts.com](http://www.culinary-concerts.com)  
[chris@culinary-concerts.com](mailto:chris@culinary-concerts.com)

**Coastal Gourmet Catering**

105 Greenmanville Avenue  
 Mystic, CT  
 David Griswold  
 (860)572-1111  
[www.coastalgourmetct.com](http://www.coastalgourmetct.com)



# Frequently Asked Questions

## **What is included in the rental fee?**

Included in the rental fee is a custom tent. It is 30'x50' with 10' high sides with cathedral windows. We have an extensive inventory of round and rectangular tables and Chivari chairs for the Mansion interior as well as tables and chairs for use on the terrace. Ample parking is reserved for our guests.

## **What is the capacity of the mansion?**

The Mansion can accommodate 150 guests.

## **How long may I utilize the mansion?**

The Mansion rental period is 7 1/2 hours. Two hours are included for setup, five hours for the event, and 1/2 hour for breakdown. Additional time may be purchased.

## **Can the venue host wedding ceremonies?**

Included with your mansion rental is the Oceanside amphitheater. Your guests are seated on rustic wooden benches with Long Island Sound as the backdrop. The Pergola is available for ceremonies for an additional fee. In the event of inclement weather, ceremonies may be held under the tent.

## **Do you provide catering or may I bring my own?**

We have an approved list of caterers to select from. Our caterers have catered here often and have demonstrated that they are dedicated to creating memorable days for our couples. Working directly with the caterer, you will customize your menu and incorporate your personal tastes. Whether you want an elaborate formal sit-down dinner, a simple buffet or custom stations presenting the latest culinary trends, our caterers will help you create the reception of your dreams.

## **How is liquor service handled?**

All of our caterers hold a liquor license and they will coordinate the service of all alcohol at your reception. The caterer will provide trained bartending staff and is responsible for coordinating and



supervising alcohol service. Alcoholic beverages must be served free of charge and tip solicitation is prohibited. Kegs of beer are not permitted. Alcohol service will end one half hour before the event is scheduled to conclude.

## **What is the delivery, set-up and pick-up schedule?**

Two hours are provided for set-up of the Mansion. Vendors have access during this time and all deliveries should be scheduled during this time. All rentals must be picked up prior to 10:00am the following morning. Unfortunately, we are unable to store any rentals or decorations.

## **Is there someone from the Mansion on-site throughout my event?**

Our staff is here during your wedding to take care of the building and assist your vendors; in general, to make your day stress-free and your event run smoothly. We are also happy to help you and work with you along the way. We have seen many beautiful weddings at our venue and we have insight into what works and what doesn't.

## **Is the building air-conditioned?**

The building is not air-conditioned but being by the water, we are always treated to a gentle breeze that keeps the building cool even on a summer evening. The Mansion is heated for events held during cooler months.

## **Are candles allowed?**

We allow candles as long as they are fully enclosed in hurricane globes, votive cups or similar holders.





## Professional *Services*

- ↪ A&B Entertainment
- ↪ A Gala Affair
- ↪ CC Kitchen
- ↪ Creative Concepts
- ↪ Dawson Entertainment
- ↪ Floral Affair
- ↪ Gourmet Galley Catering
- ↪ Historic Granite House
- ↪ Ivy's Catering
- ↪ Kathy Faber Designs
- ↪ Vivid Events
- ↪ Wedding Bliss
- ↪ Weddings by La Cuisine





# Directions

Take Route 2 south to Colchester: Route 85 south to New London, take a right onto Boston Post Road (Route 1), and then take a left onto Ocean Ave. Right onto Niles Hill Road. Left onto Dimmock Road.

**From Hartford area:** take Route 91 southbound onto Route 9 south. It will merge with Route 95, go northbound on Route 95, take Exit 75. Bear right at the end of the exit, you will be on Route 1. Proceed 3 miles to the light at Avery Lane (Route 213), turn right and follow to the park. Avery Lane will become Great Neck Road. The park will be on your right.

**From Boston and Providence areas:** take Route 95 southbound to Exit 81. At the end of the exit ramp, turn left onto access road and proceed to stop light. At the light take a left onto Cross Road and continue to the intersection with Route 1. Turn left onto Route 1 and continue to the traffic light at Avery Lane (Route 213). Turn right onto Avery Lane and follow to the park. Avery Lane will become Great Neck Road. The park will be on your right.

**From New York and New Haven areas:** take Route 95 northbound, Exit 75. Bear right at the end of the exit, you will be on Route 1. Proceed 3 miles to the light at Avery Lane (Route 213), turn right and follow to the park. Avery Lane will become

# Photo Credits

**Cover:** Robert Norman Photography

**Inside Cover:** Kiernan Photography

**Page 1:** Robert Norman Photography

**Page 2:** Inset photo - Maggie Conley Top to bottom - Brandon Ledger Photography, Maggie Conley

**Page 3:** Top to bottom - Kiernan Photography, Maggie Conley

**Page 4:** Inset photo - Brandon Ledger Photography, top to bottom - Robert Norman Photography, Robert Norman Photography

**Page 5:** Clockwise from top left - Brandon Ledger Photography, Brandon Ledger Photography, Robert Norman Photography

**Page 6:** Top to bottom - Robert Norman Photography

**Page 7:** JBenson Photography, inset photo - Robert Norman Photography

**Page 8:** Inset photo - Robert Norman Photography, top to bottom - Robert Norman Photography, Robert Norman Photography, Maggie Conley Photography

**Page 9:** Brandon Ledger Photography

**Page 10:** Clockwise from top - Robert Norman Photography, Kiernan Photography, Robert Norman Photography,

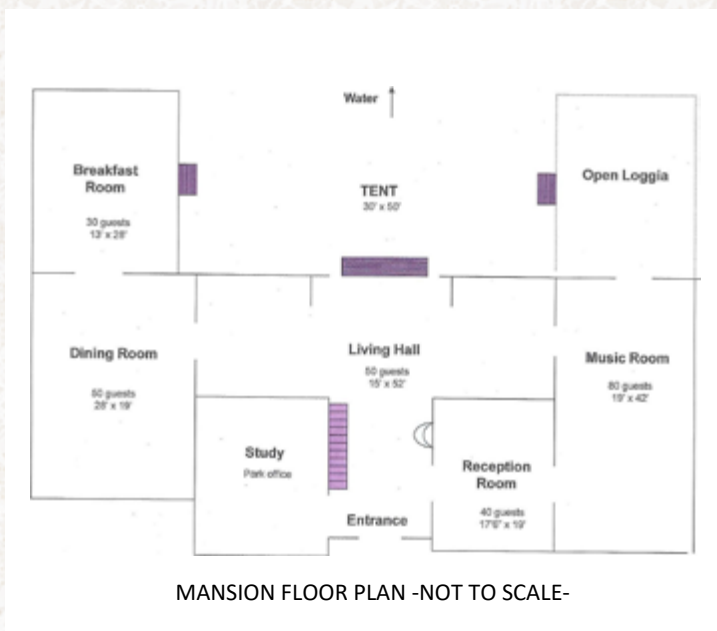
**Page 11:** Clockwise from top left - Brandon Ledger Photography, Brandon Ledger Photography, JBenson Photography, JBenson Photography

**Page 13:** Top left to bottom - Brandon Ledger Photography, Brandon Ledger Photography, JBenson photography, Kiernan Photography

**Page 18:** Bottom right - Brandon Ledger Photography

**Inside Back Cover:** Elizabeth Grant Photography

**Back Cover:** Robert Norman Photography



The Department of Energy & Environmental Protection (DEEP) is an equal opportunity/affirmative action employer offering its services without regard to race, color, religion, national origin, age, sex, or disability. In conformance with the Americans with Disabilities Act, the DEEP makes every effort to provide equally effective services for persons with disabilities. Individuals with disabilities needing auxiliary aids or services should call (860) 424-3200.



# WEDDING BLISS



**Book your stay at our intimate New London B&B...Just minutes away from Harkness**

Our bed and breakfast is a modern restoration of a great house built in 1914. We're under 2 miles from Harkness and an even shorter distance to a good night's sleep before and after the wedding. Visit our website to see what society life was like in pre-WWI New England with elegant accommodations and intimate event spaces to complement your wedding. Then book your stay right online. Contact us so we can help customize your experience. We look forward to hosting you, your family and friends' sweet dreams.

## INN AT OCEAN AVENUE



917 Ocean Avenue  
New London, CT  
**860-574-9555**

[innatocceanavenue.com](http://innatocceanavenue.com)  
[office@innatocceanavenue.com](mailto:office@innatocceanavenue.com)

A PREFERRED LIGHTING DECOR VENDOR AT EOLIA MANSION



DJ • Event Lighting • Photo Booth • Videography

YOUR VIVID EVENT.COM | 203.885.0009

# 3 Miles from Harkness

12 Overnight Guests  
35 Total Guests

2 King, 4 Queen Beds  
3 Bathrooms

Formal Dining Room

Large Living Room

Large Sunroom

Tavern and Firepit



historicgranitehouse.com

75 Rope Ferry Road  
Waterford CT 06385  
860.912.1252



**DAWSON**  
Entertainment  
@DawsonEntertainment  
[www.DawsonEntertainment.com](http://www.DawsonEntertainment.com)

**DJ's**  
**Mirror Photo Booth**  
**Bistro Lighting**  
**Uplighting**  
**Marquee Letters**





WOMAN OWNED. CUSTOM. EXPERIENCED  
A PREFERRED CATERER  
FROM THE BEGINNING



*Gourmet Galley*  
CATERING  
CELEBRATING OVER 20 YEARS



# A&B Entertainment

Professional Disc Jockey Services

*Exceptional wedding service from the initial consultation to the last dance - a night you'll always remember!*

- Professional DJs
- Master of Ceremonies
- Lighting
- Live Musicians

**860-966-2662**

[info@abentertainment.com](mailto:info@abentertainment.com)

[www.abentertainment.com](http://www.abentertainment.com)



Chic & Elegant Wedding Flowers

*Floral Affair*

[floralfair.biz](http://floralfair.biz)

203-453-1021

Be in touch... we LOVE to talk flowers!





IVYS

CATERING

BY IVY'S SIMPLY HOMEMADE

Your Taste. Our Passion.

860.333.1372

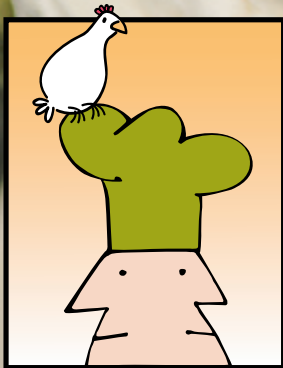
WWW.IVYS.CATERING

INFO@IVYS-CATERING.COM



# WEDDINGS BY LA CUISINE

FRESH | DELICIOUS | HANDCRAFTED | 35+ YEARS OF EXPERIENCE



**La Cuisine**  
café • market • catering

203.488.7100 | [LACUISINE.NET](http://LACUISINE.NET)

# A Gala Affair

EXQUISITE FLORAL, EVENT DESIGN AND DECOR

[WWW.AGALAAFFAIR.COM](http://WWW.AGALAAFFAIR.COM) + 860.601.1701

[WWW.FACEBOOK.COM/AGALAAFFAIR/](http://WWW.FACEBOOK.COM/AGALAAFFAIR/)

[WWW.INSTAGRAM.COM/AGALAAFFAIR\\_EVENTS/](http://WWW.INSTAGRAM.COM/AGALAAFFAIR_EVENTS/)



**KATHY FABER DESIGNS**  
Custom Bridal &  
EveningWear



737 Stafford Ave  
BRISTOL, CT  
(860)583-3461  
Tue, Thur, Fri  
noon-6:00 pm  
Sat. 10:00  
am-3:00 pm  
Facebook &  
Instagram  
Designing 35 yrs!



**Creative  
Concepts**  
*by Lisa*  
EVENTS



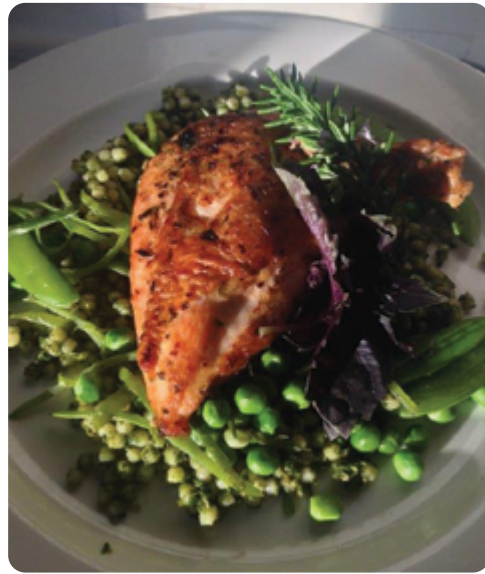
Creating one of kind  
events, which celebrate  
each and every clients  
personality and  
sense of style!

Vicki + Erik Photography

EVENT PLANNING & DESIGN  
JUSTICE OF THE PEACE SERVICES

Office: 475-441-7123

[www.creativeconceptsbylisact.com](http://www.creativeconceptsbylisact.com)



**DREAM.  
SAVOR.  
ENJOY.**



# CC KITCHEN

Culinary Concerts, Inc.

*Performances in Catering*

Eolia weddings since 2000 \* Chef-owned since 1986

Design \* Drinks \* Delights

Madison, Connecticut • [culinary-concerts.com](http://culinary-concerts.com) • 203.245.0184







**Harkness Memorial State Park**  
275 Great Neck Road, Waterford, Connecticut 06385 ☎ 860.443.5725 ✉ e-mail: DEEP.Eolia@ct.gov