

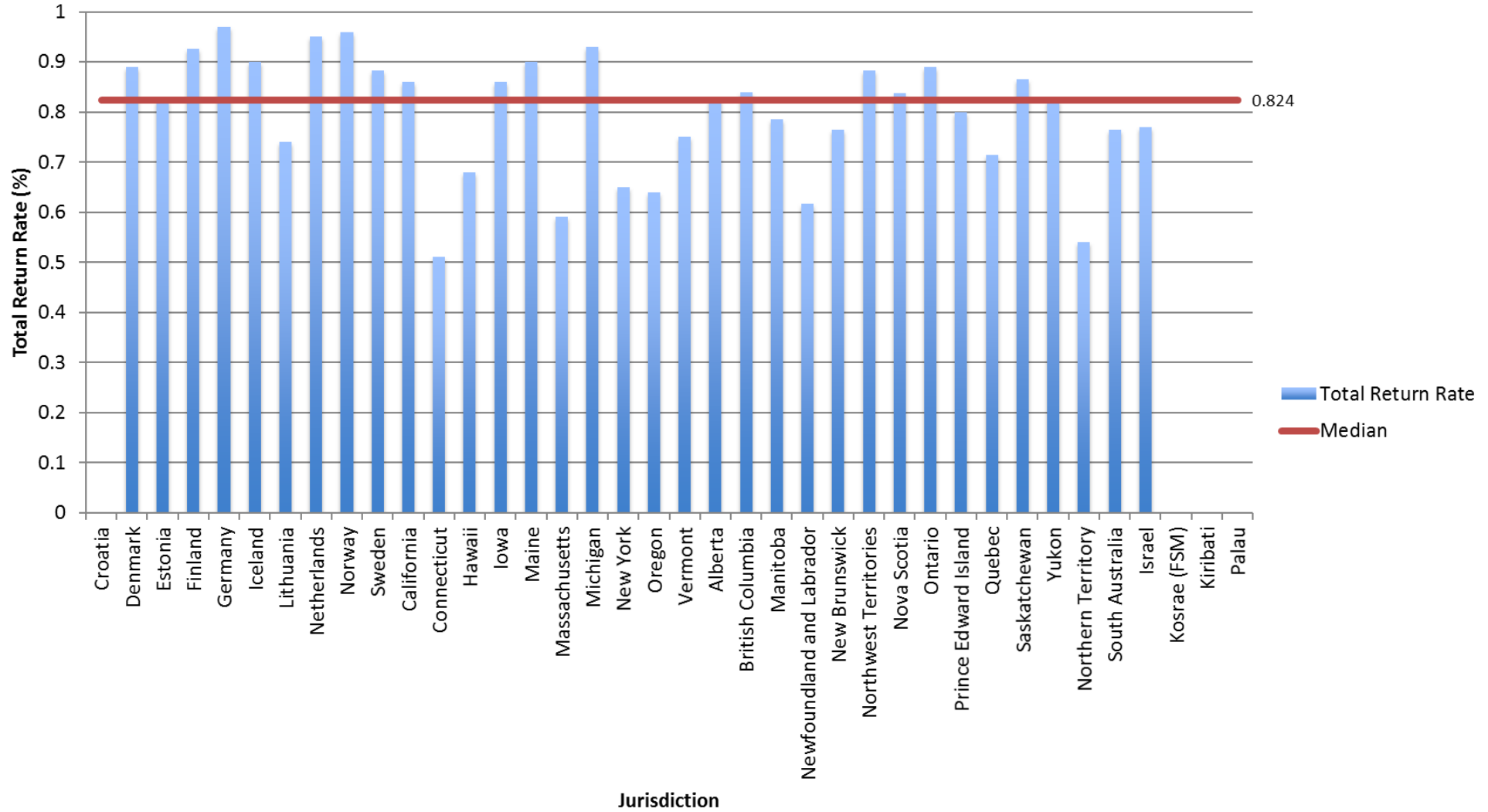
Connecticut Bottle Bill Modernization Stakeholder Dialogue

Susan V. Collins
Container Recycling Institute

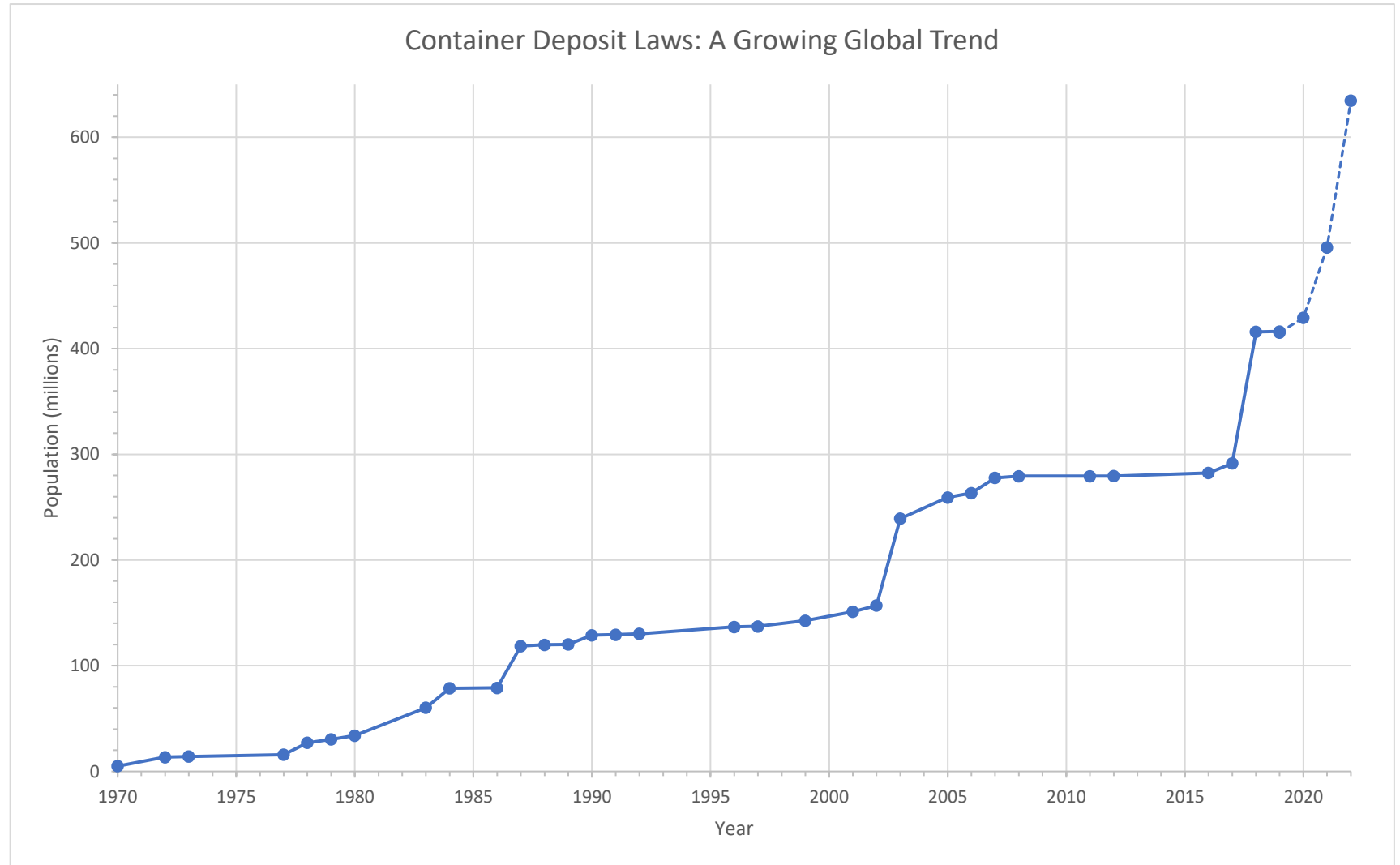
August 9, 2021



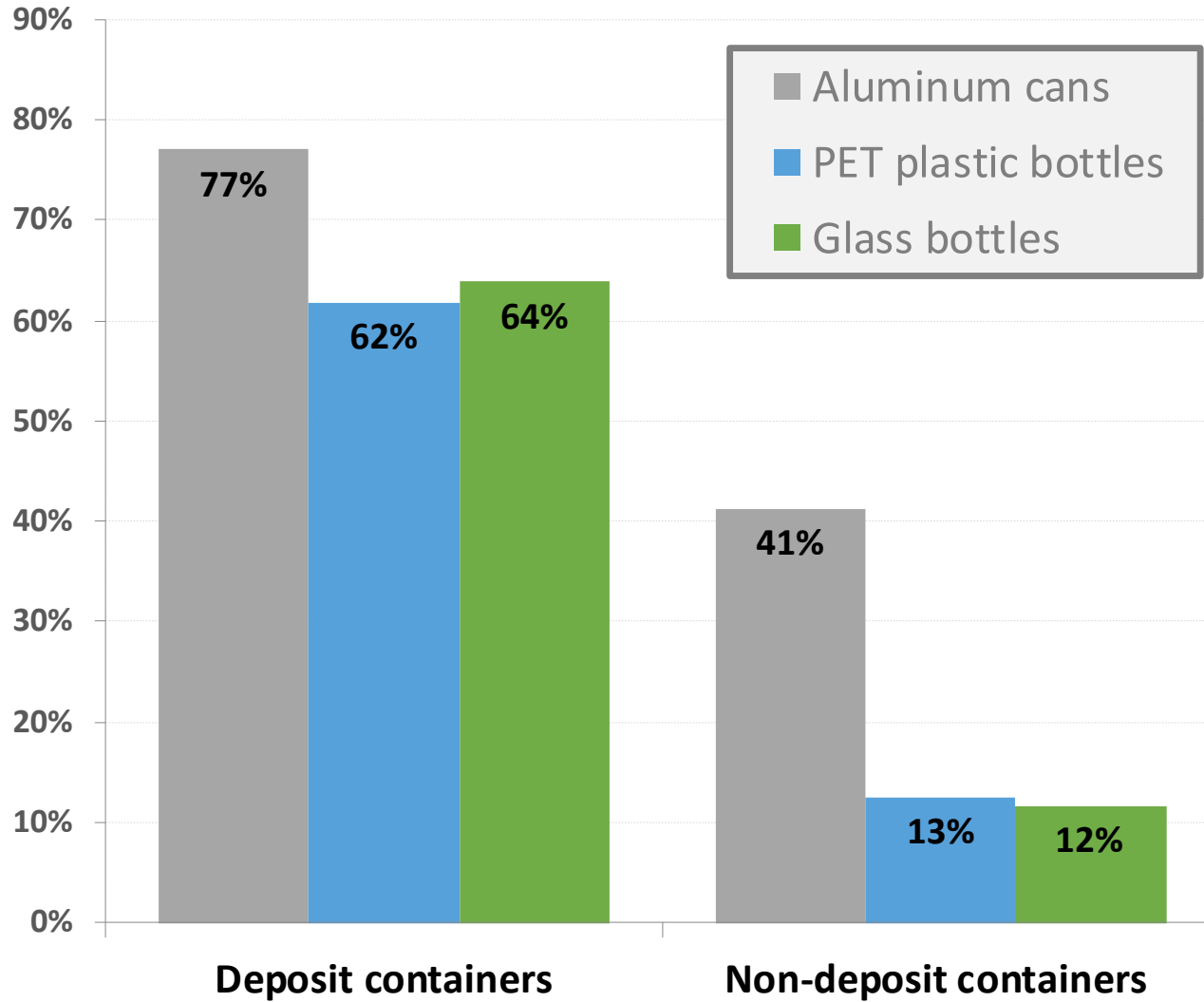
Return Rates in 38 Deposit Jurisdictions Around the World



Existing and new laws will serve more than **635** million people



U.S. Recycling Rates by Deposit Status, 2018

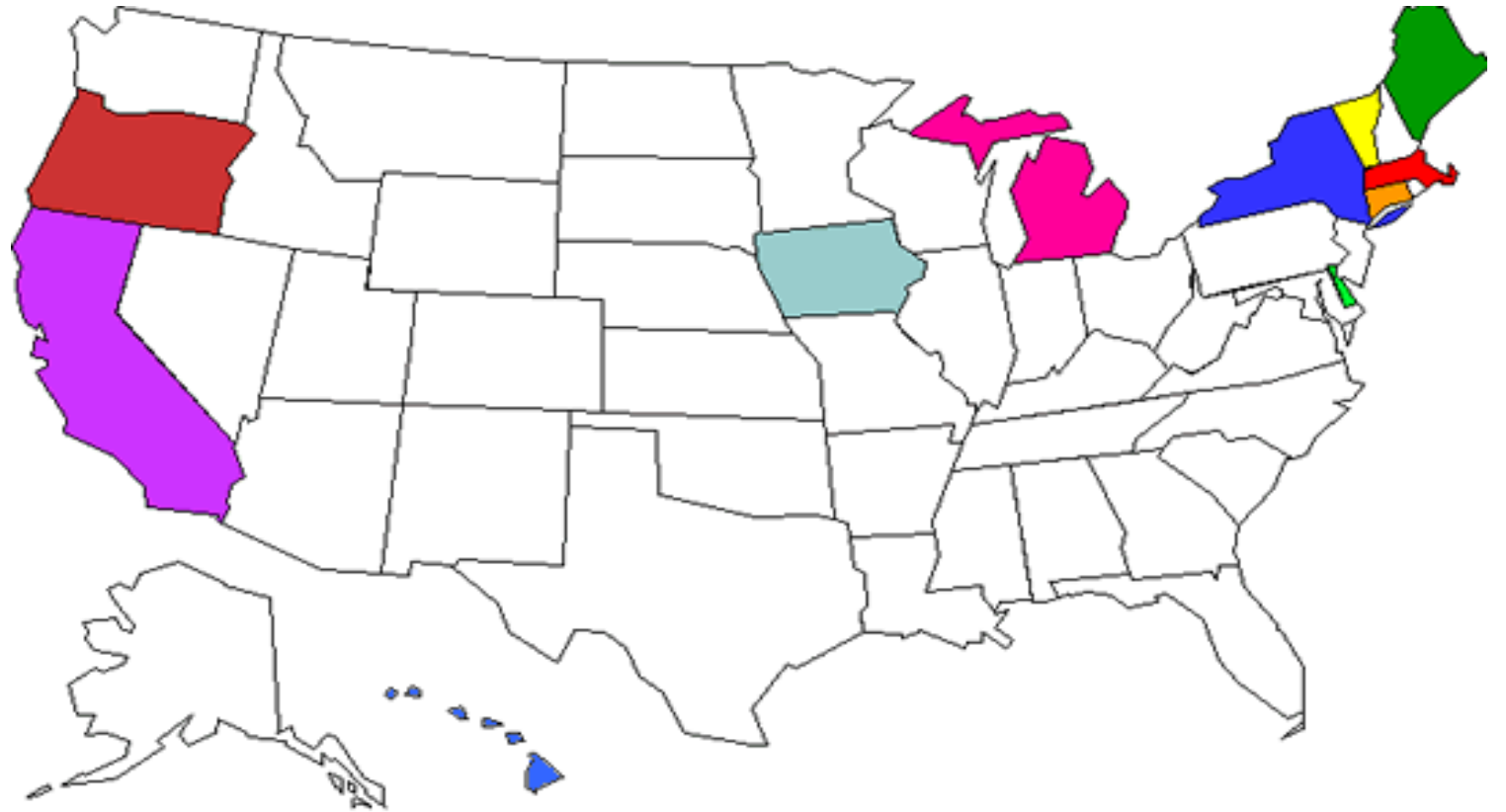


Source: "2018 Beverage Market Data Analysis," Container Recycling Institute, 2020. *This graph is copyrighted, and is not to be shared, copied, or reproduced in any manner without written permission from CRI.*

© Container Recycling Institute, 2020.

Deposits drive up the overall U.S. beverage container recycling rate

More than half (50%) of all beverage containers recycled in the U.S. in 2017 came from the 10 bottle bill states— although they have only 29% of the US population.



Percent of Beverage Units Covered by Deposit Program, 2018

State	Beverage Units Covered by Deposit (%)	State	Beverage Units Covered by Deposit (%)
Maine	91%	Connecticut	76%
Hawaii	87%	Iowa	64%
California	86%	Michigan	56%
Oregon	78%	Vermont	46%
New York	77%	Massachusetts	41%



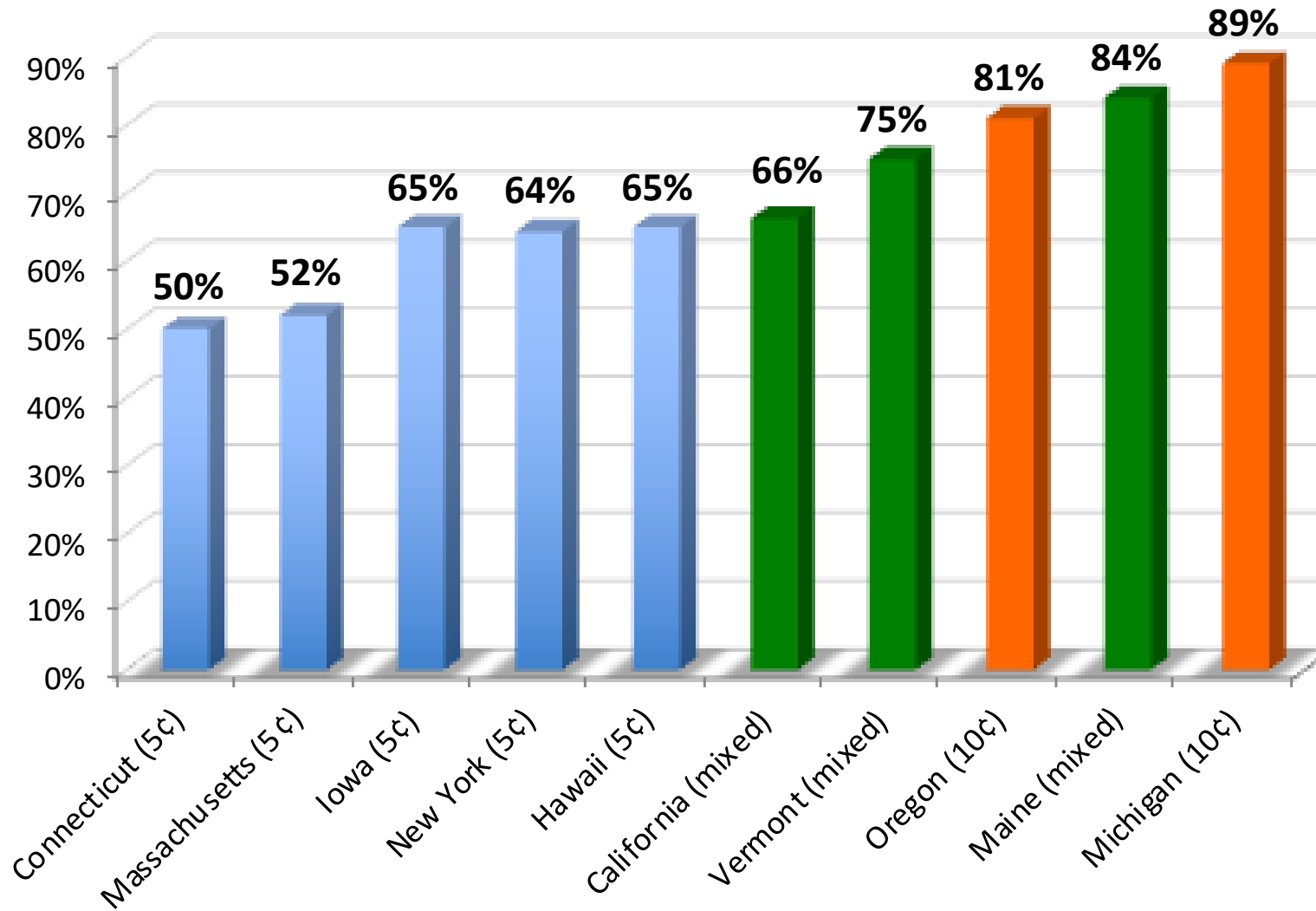
Handling
Fees

State	Handling Fee Low	Handling Fee High
Iowa	1¢	
Connecticut	1.5¢	2¢
Hawaii	3.4¢	8.1¢
Massachusetts	2.25¢	3.25¢
New York	3.5¢	
Vermont	3.5¢	4¢
Maine	4¢	4.5¢
Michigan	No Handling Fee, No Redemption Centers	
Oregon	No Handling Fee	
California	Variety of system payments	

- Of the states with handling fees, Iowa's are the lowest
- Other states have addressed this over time by gradually increasing the handling fee

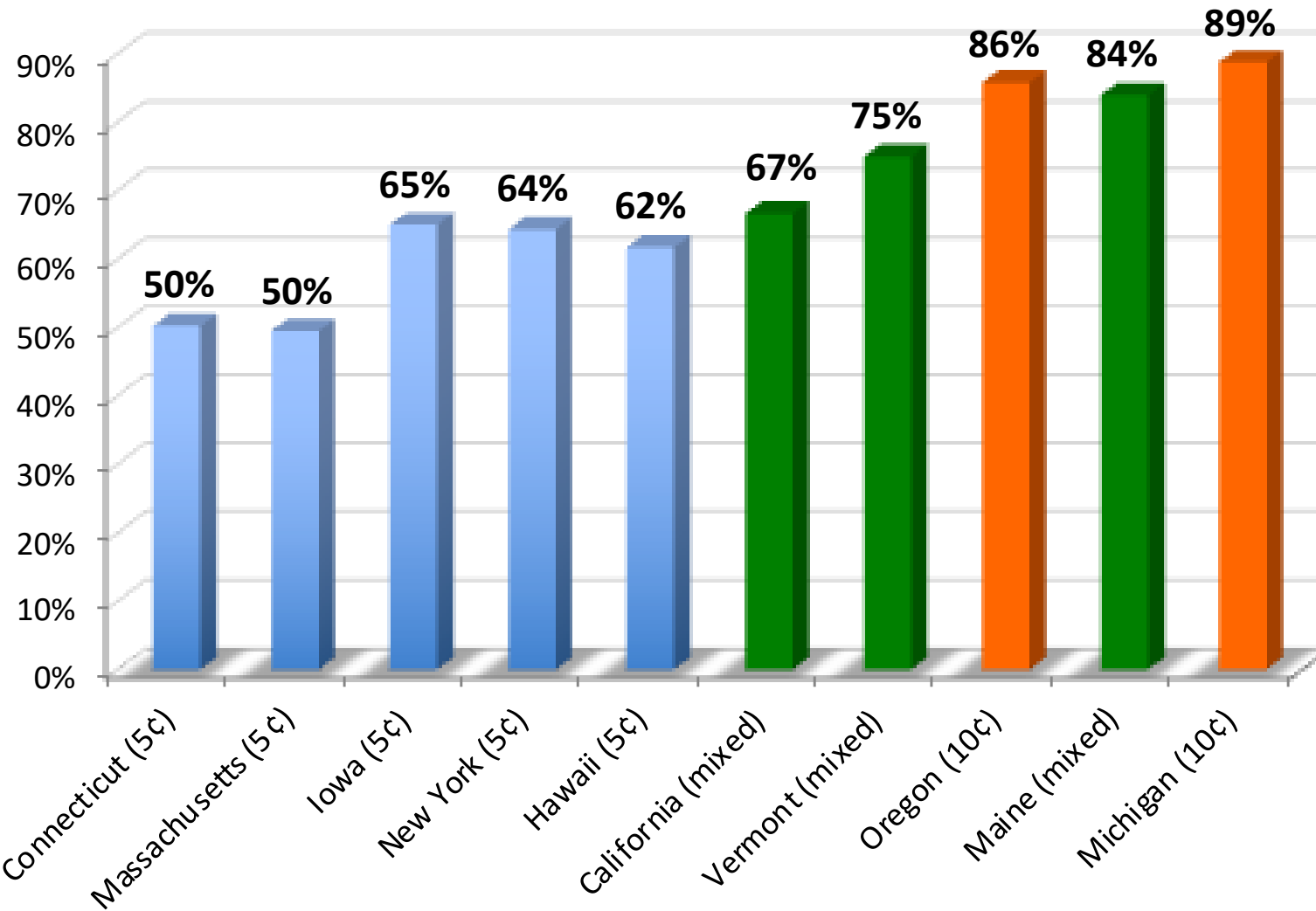
State	Beer	Soda/ Carbonated water	Water	Juice, Tea, Energy Drinks, Sports, Other non-carbonated drinks	Wine	Liquor
ME	5¢	5¢	5¢	5¢	15¢	15¢
OR	10¢	10¢	10¢	10¢	X	X
CA	5¢/10¢	5¢/10¢	5¢/10¢	5¢/10¢	X	X
HI	5¢	5¢	5¢	5¢	X	X
IA	5¢	5¢	X	X	5¢	5¢
MA	5¢	5¢	X	X	X	X
NY	5¢	5¢	5¢	X	X	X
CT	5¢	5¢	5¢	X	X	X
MI	10¢	10¢	X	X	X	X
VT	5¢	5¢	X	X	X	15¢

States with higher deposit values have higher redemption rates: 2018



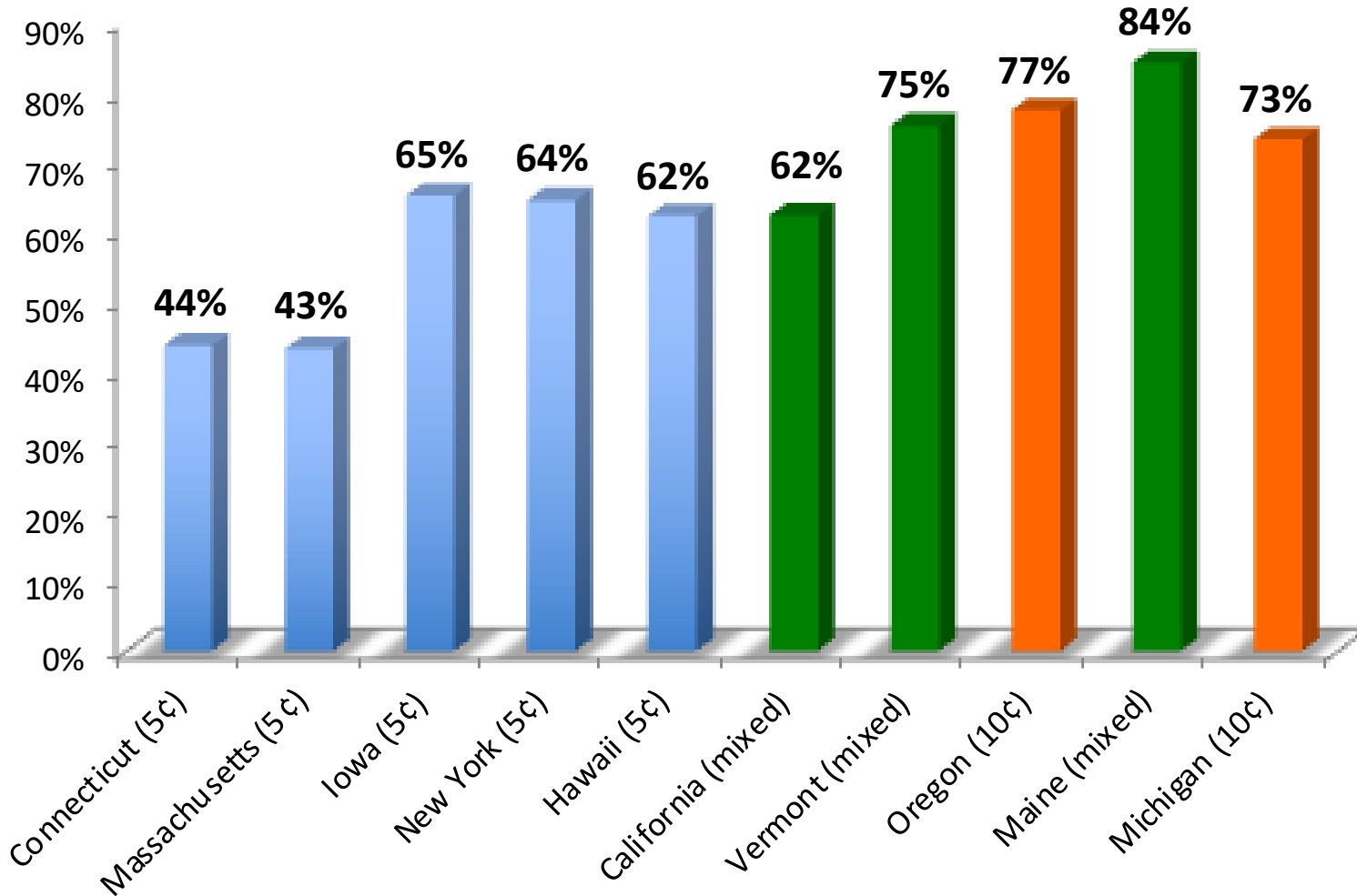
This graph is copyrighted, and is not to be shared, copied, or reproduced in any manner without written permission from CRI.

States with higher deposit values have higher redemption rates: 2019



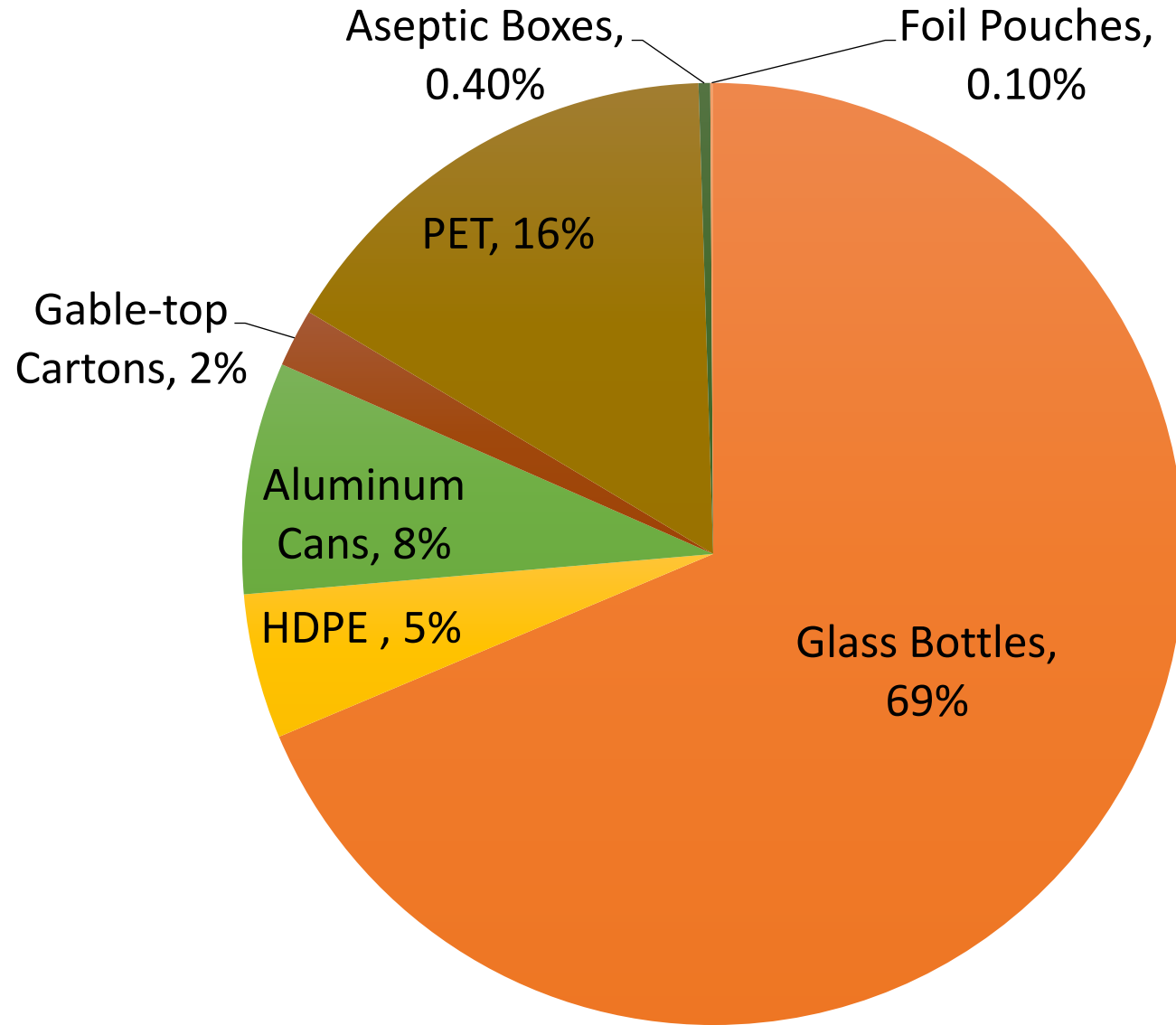
This graph is copyrighted, and is not to be shared, copied, or reproduced in any manner without written permission from CRI.

States with higher deposit values have higher redemption rates: 2020



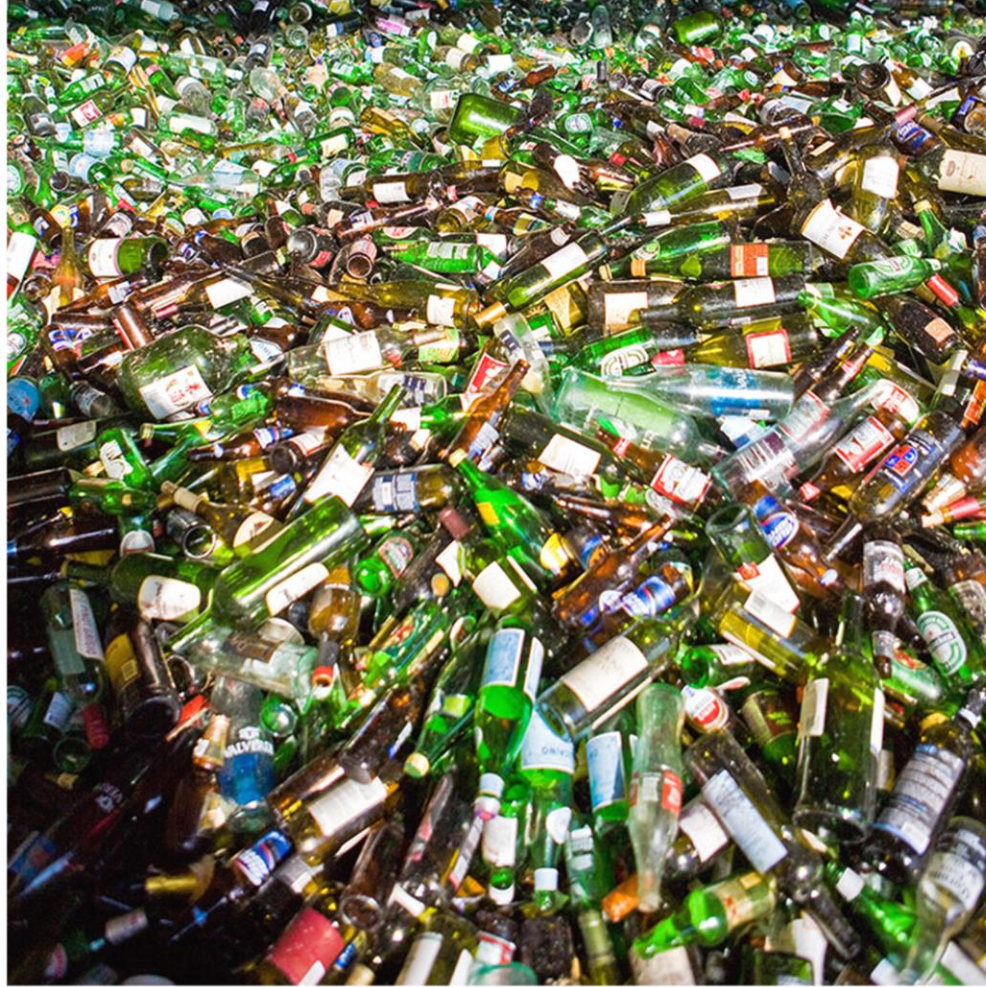
This graph is copyrighted, and is not to be shared, copied, or reproduced in any manner without written permission from CRI.

Weight of Beverage Containers, U.S. Generation

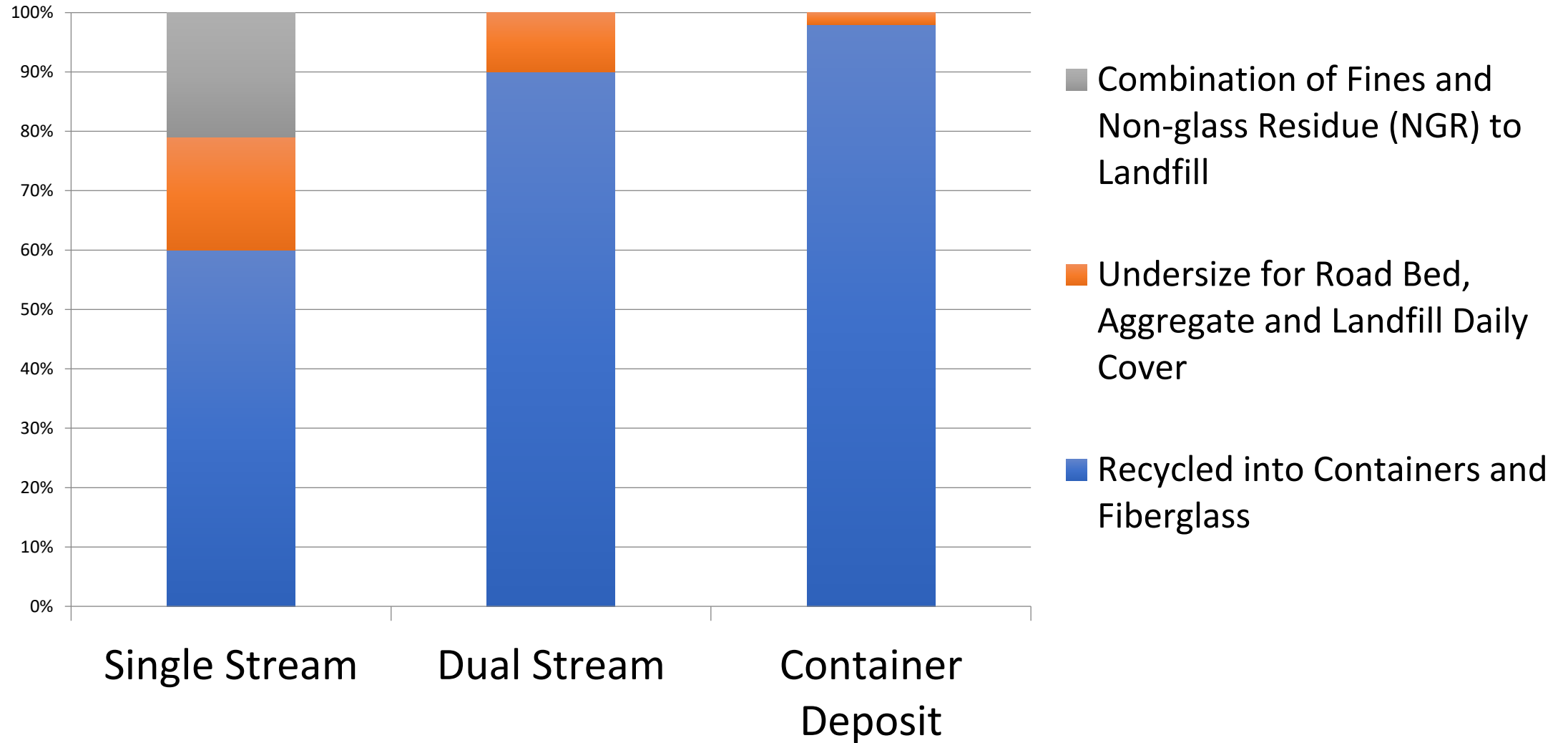


U.S. Deposit Tons Recycled vs. Total Beverage Tons Recycled, 2017					
	Aluminum Cans	PET Bottles	HDPE Bottles	Glass Bottles	Subtotal, bottles & cans
All beverage sales	1,467,300	2,876,859	764,727	12,213,967	17,322,853
Deposit beverage sales	344,074	651,135	53,539	2,031,922	3,080,670
All beverage recycling tons	653,760	702,333	238,905	2,739,812	4,334,810
All beverage recycling rate	44.6%	24.4%	31.2%	22.4%	25.0%
Tons redeemed	263,084	389,799	19,357	1,306,969	1,979,209
Redemption rate	76.5%	59.9%	36.2%	64.3%	64.2%
Tons redeemed as a proportion of all beverage recycling tons	40.2%	55.5%	8.1%	47.7%	45.7%
<p>Source: data derived from "2017 Beverage Market Data Analysis," The Container Recycling Institute, 2020.</p> <p>© Container Recycling Institute, 2020</p>					

Glass: Deposit vs. Single Stream



Glass Fines and Residue Rates



Collecting glass: Recommendations

Drop-off points



- ▶ 1 per 20,000 residents
- ▶ Easily accessible
- ▶ Visible



www.rippleglass.com

Comparison of Glass Collected for Recycling

QUANTITY OF GLASS COLLECTED THROUGH VARIOUS METHODS, POUNDS PER CAPITA

	Glass-only drop-off	Single-Stream Curbside	Glass-only Curbside	Deposit-refund	Total
Ripple System, Kansas City area	18				18
Fayetteville, Arkansas			33		33
Oregon, statewide			23	31	54
Leeds, U.K.	28				28
EU - various, outliers excluded	EU Countries use multiple types of collection methods				55-77
California, statewide		14		32	46

Thank You!

Learn

Main Website www.container-recycling.org

Bottle Bill Website www.bottlebill.org

Connect

Facebook www.facebook.com/container.recycling

Twitter @CRI_recycle

LinkedIn www.linkedin.com/company/container-recycling-institute

Contact

Tel (310) 559-7451

Email scollins@container-recycling.org

